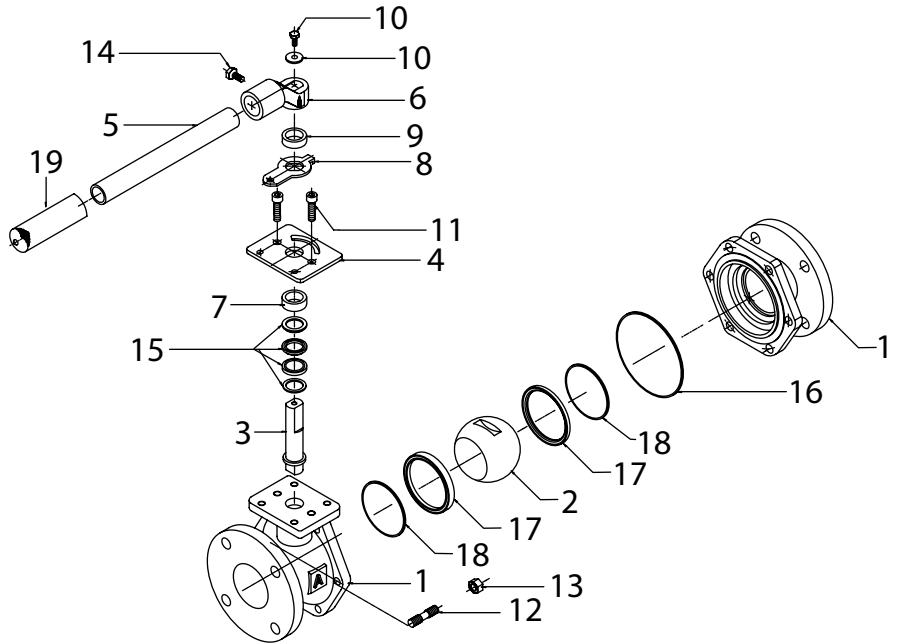


MODEL 4000

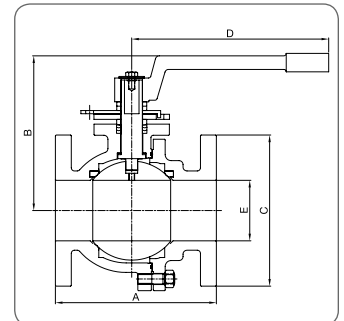
Cast Iron Flanged End Ball Valve



	Part	Material
1	Body	Cast Iron/A126 Class B
2	Ball	Cast Iron/Teflon® Fused
3	Stem	Stainless Steel
4	Gland Plate	Steel
5	Handle	Steel
6	Handle Bracket	Ductile Iron
7	Packing Follower	Stainless Steel
8	Stem Indicator	Steel
9	Spacer	Steel
10	Stem Stud/Washer	Carbon Steel
11	Gland Stud	Carbon Steel
12	Body Stud	Carbon Steel
13	Body Nut	Carbon Steel
14	Handle Bracket Bolt	Carbon Steel
15	Packing	PTFE (Chevron)
16	Body Gasket	PTFE
17	Seat Ring	RPTFE 15% GF
18	Back Seat Ring	RPTFE 15% GF
19	Handle Grip	Vinyl Rubber Foam



DIMENSIONS:	1/2	3/4	1	1 1/2	2	2 1/2	3	4	6	8	10
A Face to Face	4 1/4	4 5/8	5	6 1/2	7	7 1/2	8	9	10 1/2	11 1/2	13
B Center of Port to Top	3 1/2	3 1/2	4	5	5 1/2	7	7 1/2	8 1/2	13	13	15
C Flange Diameter	3 1/2	3 5/8	4 1/4	5	6	7	7 1/2	9	11	13 1/2	16
D Center of Valve to Handle End	9	9	9	12	12	13 1/2	13 1/2	15 1/2	30	30	33
E Port Diameter	1/2	3/4	1	1 1/2	2	2 1/2	3	4	6	6	8
Bolt Holes	4	4	4	4	4	4	4	8	8	8	12
Weight lbs.	6	8	10	16	22	36	46	75	131	185	276
CV	26	50	100	260	500	750	1245	2500	5470	4150	6700



SPECIFICATIONS:

- A126 Class B Cast Iron Body with FDA food-grade epoxy powder coat.
- Teflon® Fused Solid Ball
- Blow-out Proof Stainless Steel Stem
- Reinforced Teflon® Seats
- Face to Face and Flanged Dimensions conform to ANSI Standard B16.10 which exactly match end to end dimensions of all cast iron gate valves and plug valves.
- Lockable in Full Open or Closed Positions
- Mounting Pad for Easy Actuation
- Adjustable Length/Removable Handles to fit into areas of limited space.
- Re-buildable
- Full Port through 6"

API 598
MSS SP-72
ASME B16.10
FED. SPEC. WW-V-35
AWWA C507-99 Proof of Design Test
Meets ANSI/NSF 61, Prop 65, AB1953

RATING:

125 psi WSP
200 psi WOG
353° F

This patented Cast Iron Ball Valve has been engineered to replace any IBBM Gate Valve, All Iron Gate Valve, or Plug Valve.

Teflon® is a registered trademark of DuPont.

SAMPLE SPECIFICATION:

Ball valves shall be of the floating-ball design capable of providing bi-directional, tight shutoff in accordance with MSS SP-72. The valves shall be rated at 125# WSP/200# WOG. Bodies shall be of cast iron per ASTM A126 Class B, With ANSI Class 125 flat-face flanges. The interior and exterior of the body shall be epoxy-coated. The ball shall be PTFE infused cast iron, with a 304 stainless steel blowout-proof stem. The seats and body seals shall be PTFE. The stem seal shall be PTFE, externally adjustable chevron type. Valves shall be equipped with locking handles as standard. If service conditions require, valves may be equipped with 2" square operating nuts, manual gear operators, or pneumatic, electric, or hydraulic actuators. Valves shall be the Series 4000 as manufactured by American Valve, Inc. or as approved by the engineer.