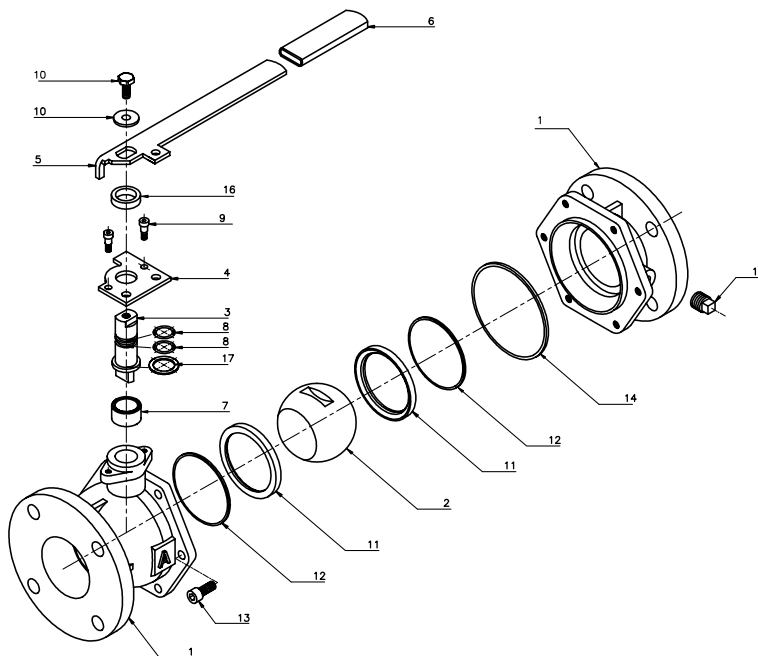


# MODEL 3700

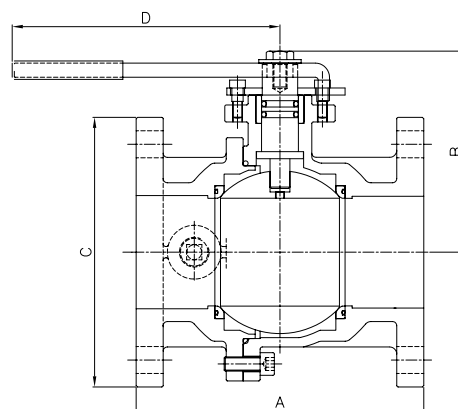
## Cast Iron Flanged Ball Valve



	Part	Material
1	Body	Cast Iron/A126 Class B
2	Ball	Cast Iron/Teflon® Fused
3	Stem	Stainless Steel
4	Top Plate	Steel
5	Handle	Steel
6	Handle Grip	Vinyl Dipped Plastisol
7	Sleeve	Steel
8	Stem 'O' Ring	Nitrile Rubber (Buna-N)
9	Shoulder Screw	Steel
10	Stem Bolt/Washer	Steel
11	Seat Ring	Virgin PTFE
12	Back Seat Ring	Nitrile Rubber (Buna-N)
13	Socket Head Screw	Steel
14	Body Gasket	Nitrile Rubber (Buna-N)
15	Body Plug	Steel
16	Collar	Steel



DIMENSIONS:		2	2.5	3	4	6	8
A	Face to Face	7"	7.5"	8"	9"	10.5"	11.5"
B	Center of Port to Top	5.5"	5.22"	5.59"	6.34"	8.31"	9.76"
C	Flange Diameter	6"	7"	7.5"	9"	11"	13.5"
D	Center of Valve to Top of Handle	12"	10.2"	10.9"	12.6"	16.7"	19.7"
	Port Diameter	2"	2.5"	3"	4"	6"	8"
	# of Bolt Holes	4	4	4	8	8	8
	Weight (lbs.)	25	30	38	62	118	199



- Epoxy Coated Cast Iron Body.
- Teflon®-fused Solid Ball.
- Same end-to-end as any flanged gate or plug valve.
- Tapped & plugged boss allows for venting downstream, or test port for backflow preventer.
- 2" through 8" - Full Port.
- Rated 200W @ 200°F.
- Class VI Positive Shutoff.
- 100% Lead-Free.
- Low Torque.
- Ideal for Liquid, Air, and Backflow applications.
- Blowout Proof Stem

Meets California Prop. 65  
**61<5**  
Drinking Water Standards

