



NATURALGEAR

THE SCIENCE OF CAMOUFLAGE™





Welcome to Natural Gear, welcome to a new refreshing perspective centered around science, subtlety and a successful hunt

At Natural Gear, we're dedicated. Dedicated to making the most of your time, your hunt, your products and most importantly your success. Our dedication started deep in the Arkansas woods over 25 years ago and it still rings true today. At Natural Gear, we understand the passion of the outdoor stage, the grit of hunkering down motionless for hours, and the excitement that comes when hard work and dedication pay off. It's what we live for, it's what dominates our minds and what keeps us looking forward to each new season.

Natural Gear's scientifically proven camouflage patterns are unmatched by anyone else in the industry. We blend in better. It's that simple.



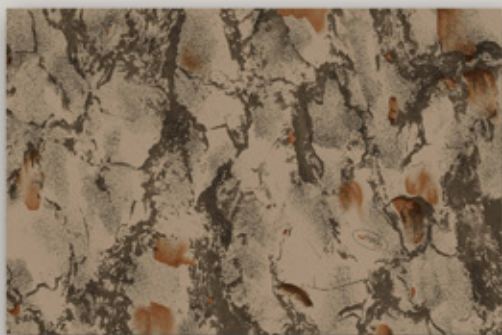
BRIEF HISTORY

It's not uncommon for a concept to be improved 'in the field,' when the need becomes apparent. This is especially true when an inventor happens to be the protagonist of our story. In the early 1990's, a hunter and his brother were on a bow hunt in the Mississippi River bottoms of Arkansas – hunting in separate locations a good ways away, one wearing the latest camo pattern on the market. Intently hiding in the timber, over forty yards away and twenty feet off the ground, he could still clearly pick him out. At about any distance, his outline formed the dreaded 'dark blob.' His camo had failed.

It was then that the decision was made to come up with a better camouflage pattern to improve upon all hunters' ability to hide.

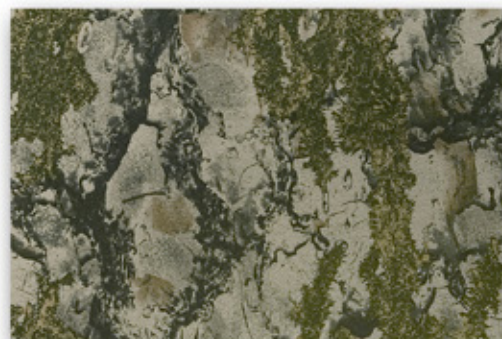
And so our story began. With a unique, photographic approach, we traveled the country, capturing the naturally occurring patterns of Nature, taking note of the primary colors, shapes and, in particular, the consistent vertical orientation. We then experimented with several designs, synthesized from our observations. After many attempts, Natural Gear's Original Camouflage pattern was born and taken to market in 1994. That same pattern is the one we still use today for our full line of clothing and accessories. We keep using it because it keeps working; Mother Nature hasn't changed her pattern and neither have we.





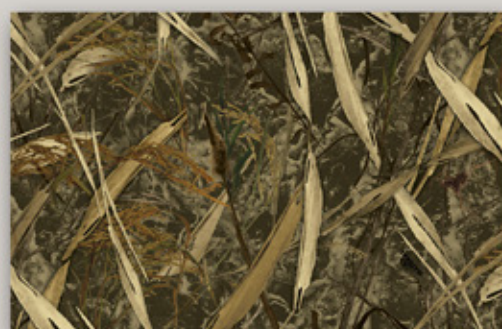
Original "Natural"

The Original Natural is the one that started it all and is still our most popular pattern 25 years later. Because it was created using Natural Gear's laws of soft edges, naturally occurring tones, and vertical orientation found in nature, it is incredibly versatile for use in multiple seasons and environments. Whether you're in the woods, the desert, or the swamp, this pattern can adapt to its surroundings. This is the one that made us famous.



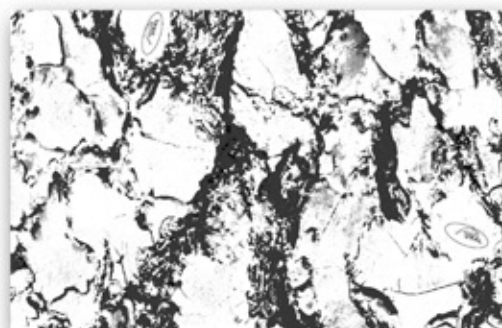
SC2 Green

The SC2 (Science 2) was added to the Natural Gear family in 2004 for use in heavy lush green vegetation, which is an excellent option for Spring and Early Fall hunts. Utilizing the same science as the Original Natural Pattern, an additional layer of mossy green provides an extra lush color palette.



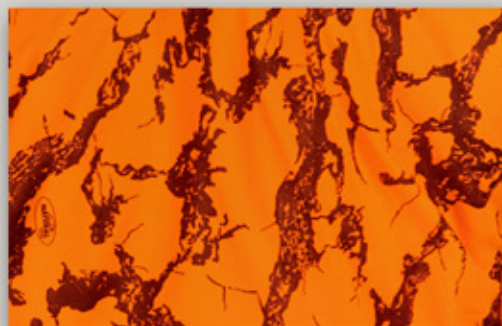
Fields

Fields is Natural Gear's newest pattern and was created to conceal in specific environments such as rice, beans, and buckbrush. We hand harvested actual elements from local farms and using Natural Gear laws, arranged them in the same vertically oriented pattern that would occur naturally. Next, we used an underlay of our color corrected original Natural Pattern to imitate Mother Nature's light and shadows on the ground. The result is one of our most elaborate and effective camouflage patterns to date.



Snow

The Snow Pattern, introduced in 1996, is arguably the most effective winter camo pattern to date utilizing the same time-tested science found in our Original Natural Pattern. Adopting the depth and contrast of the base layers while changing the colors to white and black, effectively created a new version of the tried and true original that works perfectly in winter.



Blaze

The Blaze Camo Pattern, introduced in 2006, was developed for two purposes: hunters needed to follow laws mandating safety orange while also blending in. Because deer don't see colors the way humans do, we kept it simple by using Natural Gear laws of vertically oriented layers and soft, blurry edges over a safety orange base. The result is our Blaze Orange that keeps you as invisible to big game as our Natural Original Pattern. Be sure to check your local or state hunting regulations to confirm Natural Gear Blaze Camo Pattern is in compliance, as rules and regulations vary.



112



113

Hunting Tees

- 60/40 Cotton Poly Blend
- Anti-Microbial Treatment
- Chest Pocket
- Ribbed Collar and Cuffs
- Tag less
- S-4XL

Tech Tees

- 4 Way Stretch Polyester
- Fast Drying Moisture Wicking Technology
- Ideal for Warm Weather Hunting
- Raglan Sleeves and Flatlock Seams
- Tag less
- Natural Camo Pattern
- S-3XL



116

NEW ITEM



117

NEW ITEM



101

Bush Shirt

- Cotton Poly 8oz Rip-Stop Stretch Material
- 7 Button Front
- Dual Flat Front Chest Pockets
- Button Cuffs
- Long Tapered Tail
- S-4XL



104

Fatigue Pant

- Cotton Poly 8oz Rip-Stop Stretch Material
- 6 Pocket Design
- Elastic Waist Inserts Enhance Fit
- Extra Wide Belt Loops
- Reinforced Seat and Knees
- S-3XL

461



Dura Fleece Midweight Hoodie

- Softshell Dura Fleece Shell
- Pullover Hoodie Design
- Drawcord Hood
- Kangaroo Pouch
- Natural Pattern
- S-3XL

451



Dura Fleece Midweight Pullover

- Softshell Dura Fleece Shell
- 1/4 Pullover Design
- Hem Cuffs and Waist
- Zippered Chest Pocket
- Natural Pattern
- S-3XL

462



Coral Fleece-Lined Hoodie

- Hard Sided Weatherproof Stretch outer shell
- Fuzzy Coral Fleece Lining
- Drawcord Hood
- Kangaroo Pouch
- Natural Pattern
- S-3XL

471



Dura Fleece Midweight Wader Pant

- Softshell Dura Fleece Shell
- Front Slash Pockets, One Back
- Elastic Waist with Drawstring
- Built in Stirrups
- Natural Pattern
- S-3XL



323

SC2 Turkey Vest

- Padded Back
- Cushioned Seat
- Array of Accessory Pockets
- Easy Access Locator Call Pockets
- Balance Chest Strap
- Blood Proof Game Bag
- Adjustable Center Strap
- OSFM



NEW ITEM

525

SC2 3D Leafy Top

- 1/4 Zip Design
- Adjustable Hood
- Zipper Kangaroo Pouch
- Elastic Cuffs
- Drawcord Waist
- (M/L) & (XL/XXL)



510



533



522



521



531



511MB

503



551



SC2 Lightweight Vented Shirt

- 100% Polyester
- Lightweight and Breathable
- Vented Back with Mesh Lining
- 7 Button Design
- Button Cuffs and Collar
- S-3XL

SC2 Lightweight Tech Hoodie

- 100% Polyester
- Lightweight Stretch Fabric
- Built in Stretch Hood
- Tapered Sleeves
- SC2 Pattern
- S-3XL

SC2 Expedition Pant

- 100% Lightweight Poly Rip Stop Fabric
- Water Repellant Finish
- Zippered Side and Back Pockets
- Dual Mesh Lined Hand Pockets
- Belt Loops with Elastic Waist Extender
- S-2XL



505



Full Draw Series

118



Full Draw Crew

- 95% Polyester 5% Spandex Pongee
- 2 Way Stretch
- Brushed Grid Fleece Liner
- Crew Neck Design
- Thumb Hole
- Natural Pattern
- S-3XL

120



Full Draw 1/4 Zip Hoodie

- 95% Polyester 5% Spandex Pongee
- 2 Way Stretch
- Brushed Grid Fleece Liner
- Thumb Hole
- 1/4 Zip
- Attached Hood
- S-3XL



465



Full Draw Pant

- 95% Polyester 5% Spandex Pongee
- 2 Way Stretch
- Snap Cargo Pockets
- Bottom Hem Zippers
- Natural Pattern
- S-3XL

Windproof Fleece

163



Classic Windproof Fleece Jacket

- Windproof 400g Micro Fleece
- Windproof
- Water Resistant
- Coiled Zippers
- Dual Chest Pockets (1 Magnetic)
- Drawcord Waist
- Seat Extend Tail
- Elastic Cuffs
- S-4XL

165



Classic Windproof Fleece Pant

- Windproof 400g Micro Fleece
- Windproof
- Water Resistant
- Coiled Zippers
- 6 Pocket Design
- Elastic Waist with Belt Loops
- Built in Stirrups
- Functional Zippered Fly
- S-3XL

167



Classic Windproof Fleece Bib

- Windproof 400g Micro Fleece
- 150g Quilted Isolation
- Dual Cargo Pockets
- Slash Pockets and Chest Pockets
- Fully Adjustable Shoulder Straps
- Zippered Legs for Easy On and Off
- S-3XL

Classic Windproof Fleece Parka

- Windproof 400g Micro Fleece
- 150g Fixed Insulation
- Water Resistant
- Removable Hood
- Array of Pockets
- S-4XL

162





444

Cut Down 3-in-1 Duck Coat

- Dri-Stalk Windproof/Waterproof Material
- Full Length Waterproof Zipper
- 2 Magnetic Chest-High Handwarmer Pockets
- 1 Zippered Waterproof Accessory Pocket
- 2 Waterproof Zippered Chest Pockets
- 2 Waterproof Zippered Waist Pockets
- 2 Button Closure Cargo Pockets with Shell Loops
- Removable Fleece Lined Hood
- Removable Insulated Liner
- S-3XL



447

Cut Down Waterfowl Bib

- Dri Stalk Rigid Shell Material
- Waterproof
- Windproof
- 150g insulation
- Double Layered Protection in High Wear Areas
- Abrasion Resistant Overlay on Knees
- Adjustable Shoulder Straps
- Zippered Legs to Knee
- Array of Stash Pockets
- S-3XL

Cut Down Series



105

Cutdown Waterfowl Jacket

- Dri-Stalk Windproof/Waterproof Material
- Full Length Waterproof Zipper
- 2 Magnetic Chest-High Handwarmer Pockets
- Zippered Waterproof Accessory Pocket
- 2 Waterproof Zippered Chest Pockets
- 2 Waterproof Zippered Waist Pockets
- Removable Fleece Lined Hood
- Fleece Lined Inner Collar with Beard Guard
- S-3XL

Cutdown Waterfowl Pant

- Dri-Stalk Rigid Shell Material
- Windproof
- Waterproof
- Fleece Lined
- 4-Pocket Design
- Belt Loops
- Adjustable Waist Tabs
- Built-In Stirrups
- S-3XL



106



263

Cut Down Rain Shell

- Dri Stalk Rigid Shell Material
- Windproof
- Waterproof
- Button Storm Flap
- Velcro Cuff Closures
- Drawcord Hood
- Chest and Side Slash Pockets
- S-3XL

Cut Down Rain Pant

- Dri Stalk Rigid Shell Material
- Windproof
- Waterproof
- Zippered Legs
- Elastic Waist
- S-3XL



265



F444

Cut Down 3-in-1 Duck Coat

- Dri-Stalk Windproof/Waterproof Material
- Full Length Waterproof Zipper
- 2 Magnetic Chest-High Handwarmer Pockets
- 1 Zippered Waterproof Accessory Pocket
- 2 Waterproof Zippered Chest Pockets
- 2 Waterproof Zippered Waist Pockets
- 2 Button Closure Cargo Pockets with Shell Loops
- Removable Fleece Lined Hood
- Fleece Lined Inner Collar with Beard Guard
- S-3XL

F263



Cut Down Waterfowl Bib

- Dri Stalk Rigid Shell Material
- Waterproof
- Windproof
- 150g insulation
- Double Layered Protection in High Wear Areas
- Abrasion Resistant Overlay on Knees
- Adjustable Shoulder Straps
- Zippered Legs to Knee
- Array of Stash Pockets
- S-3XL



F447

Cut Down Rain Shell

- Dri Stalk Rigid Shell Material
- Windproof
- Waterproof
- Waterproof Zippers
- Velcro Cuff Closures
- Drawcord Hood
- Chest and Side Slash Pockets
- S-3XL



F410



F411



F211MB



F111DL



F105

Cutdown Waterfowl Jacket

- Dri-Stalk Windproof/Waterproof Material
- Full Length Waterproof Zipper
- 2 Magnetic Chest-High Handwarmer Pockets
- Zippered Waterproof Accessory Pocket
- 2 Waterproof Zippered Chest Pockets
- 2 Waterproof Zippered Waist Pockets
- 2 Button Closure Cargo Pockets with Shell Loops
- Removable Fleece Lined Hood
- Removable Insulated Liner
- S-3XL



F205

Cutdown Waterfowl Pullover

- Dri Stalk Rigid Shell Material
- Fleece Lined
- Waterproof
- Windproof
- Dual Chest Pockets, 1 Magnetic
- Waterproof Neoprene Hook And Loop Cuffs
- Handwarmer Pockets
- Removable Hood
- S-3XL



F201



F204

Flannel Basics

- 100% Cotton Flannel
- 7 Button Shirt
- 6 Pocket Pant

Cutdown Waterfowl Pant

- Dri-Stalk Rigid Shell Material
- Windproof
- Waterproof
- Fleece Lined
- 4-Pocket Design
- Belt Loops
- Adjustable Waist Tabs
- Built-In Stirrups
- S-3XL



F106



346



345

Insulated Snow Pant

- Dri Stalk III Exterior Shell
- 150g fixed insulation
- Waterproof
- Windproof
- Two Zippered Front Pockets
- One Rear Zippered Pocket
- Zippered Legs to Knee
- Elastic waist
- Belt Loops
- Easy Button Tab
- S-3XL



319

Insulated Snow Jacket

- 100% Dri Stalker III Outer Shell
- 150g fixed insulation
- Waterproof
- Windproof
- Two Zippered Chest Pockets
- Two Cargo Pockets
- Roll Away Hood
- S-3XL

320



Cover up Parka & Pant

- 100% Brushed Poly Tricot
- Waterproof
- Windproof
- Quiet
- Oversized for Layering
- Full Zip Parka
- Elastic waist Pant
- OSFM



310



336



338



309



337



311DL

Ladies

W105



Ladies Stealth Hunter Jacket

- Soft Brushed Poly Tricot Shell
- Fleece Lined Body
- DWR Treatment
- Neoprene Cuffs
- Removable Hood
- Drawcord Waist
- XS-2XL

W106



Ladies Stealth Hunter Pant

- Soft Brushed Poly Tricot Shell
- Hook and Loop Ankle
- Zippered Legs
- Hidden Elastic Waistband
- XS-2XL

Y163



Youth Fleece Jacket

- 400g Windproof Fleece
- Water Resistant
- Full Zip
- Drawcord Waist
- Elastic Cuffs
- Hand Warmer Pockets
- S-XL

Y165



Youth Fleece Pant

- 400g Windproof Fleece
- Water Resistant
- Lightweight
- 6 Pocket Design
- Belt Loops
- Zippered Hip Pockets
- Zippered Fly
- S-XL

Youth



111DL



111MB



111NS



211MB



511MB



311DL



811DL



111BC



F111DL



F211MB



211



210



111GDC



111KC



111BDC



111BLMB



1110LMB



411



F411



137



337



129



831



131



132



531

Masks/Headnets



166



130



138



136



121



133



721



733



109



309



338



336



533



521



522



122



168-(M/L & XL/XXL)



810-(M/L & XL/XXL)



910-(M/L & XL/XXL)



820-(M-XXL)



F410-(M/L & XL/XXL)



310-(M/L & XL/XXL)



710-OSFM



610-OSFM



510-OSFM



830-(Left Hand M/L & XL/XXL)

Accessories

702



Wading Vest

888



Safety Vest

703



Blind Bag

704



Hand Warmer Muff

602



Shotgun Slip

801



 **NEW ITEM**

807



 **NEW ITEM**

805



 **NEW ITEM**

803



 **NEW ITEM**

Intracoastal L/S Fishing Shirt

- 100% Stretch Fit Polyester
- Loose Comfort Fit
- Caped Back w/ Mesh Vents
- Integrated Stretch
- 7 Button Design
- 2 Flat Front Chest Pockets
- S-3XL

808

804

806

802



 **NEW ITEM**

Intracoastal S/S Fishing Shirt

- 100% Stretch Fit Polyester
- Loose Comfort Fit
- Caped Back w/ Mesh Vents
- Integrated Stretch
- 7 Button Design
- 2 Flat Front Chest Pockets
- S-3XL

709

809



 **NEW ITEM**

Intracoastal Fishing Shorts

- 100% Stretch Fit Polyester
- Loose Comfort Fit
- Water and Stain Resistant
- Zippered side and slash phone pockets
- 10" Inseam
- S-3XL



Photo: Josh Alberius



Photo: Josh Alberius



Photo: Josh Alberius



Photo: Josh Alberius



Photo: Josh Alberius



Photo: Josh Alberius

Natural Gear

9823 Hilaro Springs Rd.

Little Rock, AR 72209



1-800-590-5590

www.naturalgear.com