

Product data sheet

Specifications

SQUARE D



Tandem circuit breaker, Homeline,
2 x 1 pole at 15A, 120/240VAC,
10kA AIR, plug in, UL

HOMT1515

Product availability: Stock - Normally stocked in distribution facility

Main

| | |
|------------------------------|---|
| Product | Miniature circuit-breaker |
| Range | Homeline |
| Current Rating | 15 A |
| Certifications | UL Listed |
| Voltage Rating | 120/240 V AC |
| Mounting Type | Plug-in |
| Number of Poles | 1P |
| Short Circuit Current Rating | 10 kA |
| Number of Spaces | 1 |
| Circuit Breaker Type | Tandem |
| Ratings | HACR rated |
| Electrical Connection | Box lugs |
| Wire Size | 1 x AWG 14...AWG 8 (aluminium/copper) |

Complementary

| | |
|-------------------|---|
| Tightening torque | 35.4 lbf.in (4.0 N.m) 0.004...0.009 in ² (2.5...6 mm ²) (AWG 14...AWG 8) |
| Height | 3.13 in (79.50 mm) |
| Width | 1 in (25.4 mm) |
| Depth | 2.98 in (75.69 mm) |

Environment

| | |
|---------------------------------------|----------------|
| Ambient Air Temperature for Operation | 104 °F (40 °C) |
|---------------------------------------|----------------|

Ordering and shipping details

| | |
|-------------------|--------------|
| Category | US1DE3D00046 |
| Discount Schedule | DE3D |
| GTIN | 785901065388 |
| Returnability | Yes |
| Country of origin | MX |

Packing Units

| | |
|------------------------|-----|
| Unit Type of Package 1 | PCE |
|------------------------|-----|

Price is "List Price" and may be subject to a trade discount – check with your local distributor or retailer for actual price.

| | |
|-------------------------------------|------------------------------|
| Nbr. of units in pkg. | 1 |
| Package 1 Height | 1.00 in (2.54 cm) |
| Package 1 Width | 3.00 in (7.62 cm) |
| Package 1 Length | 3.200 in (8.128 cm) |
| Package weight(Lbs) | 7.200 oz (204.117 g) |
| Unit Type of Package 2 | BB1 |
| Number of Units in Package 2 | 10 |
| Package 2 Height | 3.300 in (8.382 cm) |
| Package 2 Width | 2.600 in (6.604 cm) |
| Package 2 Length | 10.100 in (25.654 cm) |
| Package 2 Weight | 4.500 lb(US) (2.041 kg) |
| Unit Type of Package 3 | PAL |
| Number of Units in Package 3 | 3600 |
| Package 3 Height | 40.0 in (101.6 cm) |
| Package 3 Width | 40.0 in (101.6 cm) |
| Package 3 Length | 48.00 in (121.92 cm) |
| Package 3 Weight | 1648.0008 lb(US) (747.52 kg) |

Contractual warranty

| | |
|-----------------------------|----|
| Warranty (in months) | 18 |
|-----------------------------|----|



Environmental Data

Schneider Electric aims to achieve Net Zero status by 2050 through supply chain partnerships, lower impact materials, and circularity via our ongoing “Use Better, Use Longer, Use Again” campaign to extend product lifetimes and recyclability.

[Environmental Data explained >](#)

[How we assess product sustainability >](#)



Environmental footprint

| | |
|--|---|
| Total lifecycle Carbon footprint | 23 kg CO2 eq. |
| Environmental Disclosure | Product Environmental Profile |
| Carbon footprint of the manufacturing phase [A1 to A3] | 0.9 kg CO2 eq. |
| Carbon footprint of the distribution phase [A4] | 0.1 kg CO2 eq. |
| Carbon footprint of the installation phase [A5] | 0 kg CO2 eq. |
| Carbon footprint of the use phase [B2, B3, B4, B6] | 22 kg CO2 eq. |
| Carbon footprint of the end-of-life phase [C1 to C4] | 0 kg CO2 eq. |

Use Better



Materials and Substances

| | |
|--|---|
| Packaging made with recycled cardboard | Yes |
| Packaging without single use plastic | Yes |
| EU RoHS Directive | Compliant |
| REACH Regulation | REACH Declaration |
| California proposition 65 | WARNING: This product can expose you to chemicals including: Nickel (Metallic), which is known to the State of California to cause cancer. For more information go to www.P65Warnings.ca.gov |

Use Longer



Lifetime extension

| | |
|--------|----|
| Repair | No |
|--------|----|

Use Again

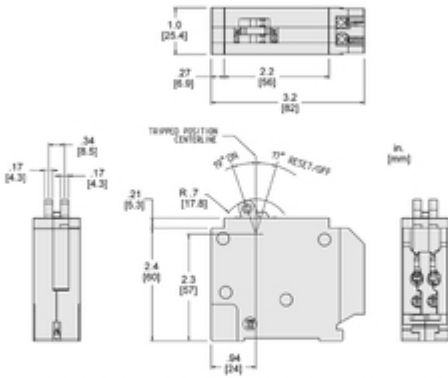


Repack and remanufacture

| | |
|---------------------|--|
| Circularity Profile | No need of specific recycling operations |
| Take-back | No |

Technical Illustration

Dimensions



All dimensions are approximate. Also refer to technical drawings and documentation.

Image of product / Alternate images

Alternative

Technical Benefits
Tandem Circuit Breaker



For residential/
commercial use
to protect entire
branch circuits



Compatible with
Homeline electrical
panels and CSEDs
with 1 space



Homeline tandem
circuit breaker with dual
single pole's at 15 amps



The current capacity
that this circuit breaker
is able to interrupt
before breaking is 10kA



Easy plug on design
with SE Homeline
Loadcenters



Protects against
overloads and short-
circuits