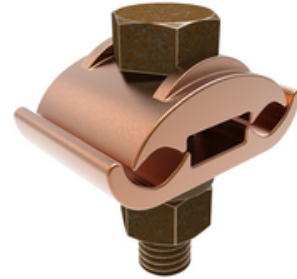




GC2929, Mechanical Grounding Connector, 2 Cables to 1/4" Thick Bar, 2/0 AWG Sol-250 kcmil, 1/2" Stud

By Burndy
Catalog # [GC2929](#)



Mechanical Grounding Connector, 2 Cables to 1/4" Thick Bar, 2/0 AWG (Sol) -250 kcmil, 1/2" Stud, Torque: 480 lb in.

Application

For Joining A Wide Range Of Two Parallel Copper Cables, Direct Burial In Concrete Or Ground

General

Catalog Number	GC2929
EU RoHS Indicator	Yes
Installation Torque	480 lb-in
Recommended in-lb	
Material	Copper
Material Type - Screw	DURIUM™ Silicon Bronze
Physical Attribute - Screw Type	Hexagonal Bolt
Plated	N
Plating Type	Unplated
Sub Brand	MECHANICAL CONNECTOR
Type	GC
UPC	781810231722
UPC 12 Digit	7818102317222

Dimensions

Dimension - Height inch	2.32 in
Dimension - L Length Overall mm	32 mm
Dimension - Length Overall inch	1.25 in
Dimension - Width fraction	2 in
Dimension - Width inch	2.04 in
Dimension - Width mm	52 mm
Dimensions	1.25 in x 2.04 in x 2.32 in
Height	2.32 in
Length	1.25 in
Width	2.04 in

Conductor Related

Conductor - Copper Solid Size	2/0 AWG;3/0 AWG;4/0 AWG
Conductor - Copper Solid Size Range	2/0 AWG - 250 KCMIL
Conductor - Copper Str Size	2/0 AWG;3/0 AWG;4/0 AWG;250 kcmil
Conductor - Copper Str Size Range	2/0 AWG-250 kcmil

Certifications And Compliance

Certification - CSA Approved	No
Certification - ETL	No
Certification - UL Listed Direct Burial	Yes
Certification - UL Recognized	No
Certification - cULus	No
Industry Standard(s)	UL467
Standards - Industry Standards Met	UL467
Standards - RoHS Compliance Status	EX
UL Listed	Yes

Product Assets

[3D Models - GC2929_MODEL-PDF](#)
[3D Models - GC2929_MODEL-STEP](#)
[3D Models - GC2929_MODEL-IGES](#)
[Catalogs - Full Line BURNDY Catalog](#)
[Catalogs - Section E2 - Mechanical Grounding](#)
[Customer Notices - Prop 65 Notice](#)
[Product Cross Section Image\(s\) - BUR_GC_Lineart](#)
[Sales Drawings - SC..091659-01](#)



A proud member of the Hubbell Family.

©2024 Hubbell Incorporated. All rights reserved.
BRDY_MX-GC2929-SPEC-EN | REV 6/2024