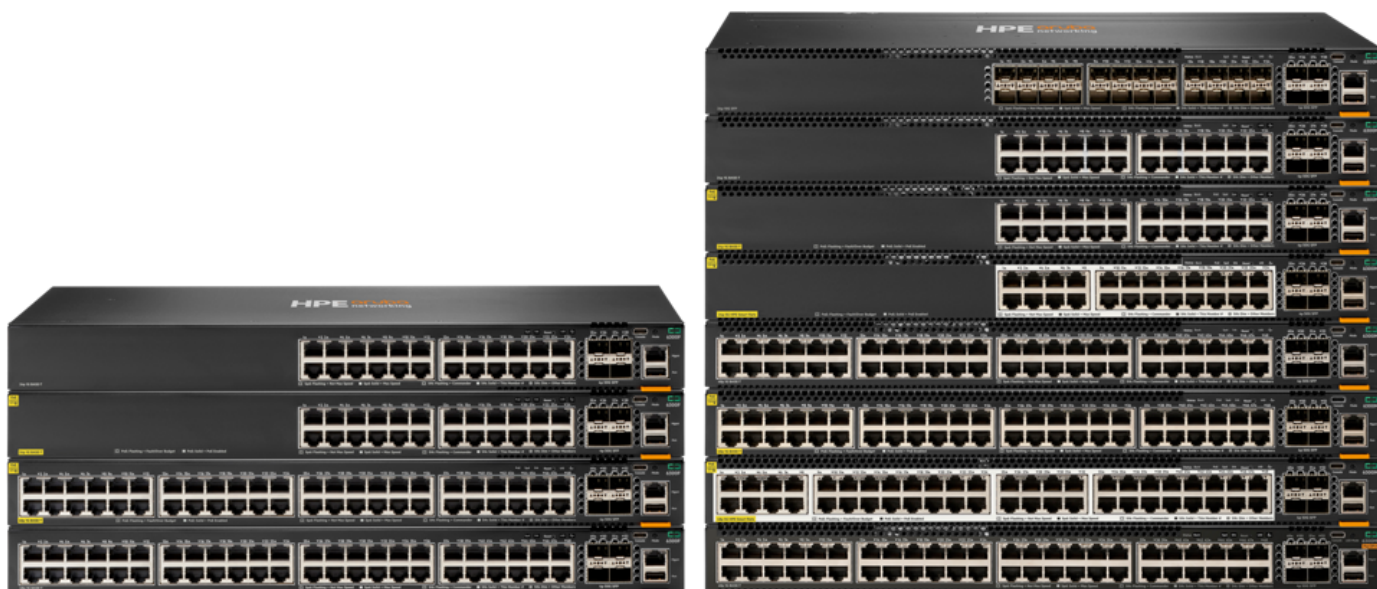


HPE Aruba Networking CX 6300 Switch Series



What's new

- The HPE Aruba Networking CX 6300 Switch Series is a family of stackable Layer 3 switches with BGP, EVPN, VXLAN, VRF, OSPF routing, robust quality of service (QoS), MACsec 256, PTP, AVB and LRM [1]
- Three stackable Layer 2-only CX 6300L switches with HPE Smart Rate multi-gigabit and MACsec 256 encryption are available for high performance access deployments
- Powerful 7th Gen ASIC architecture provides the CX 6300 series with 880 to 1760 Gbps system switching capacity, 660 to 1310 Mpps of system throughput and up to 200 to 400 Gbps stacking bandwidth

Overview

The HPE Aruba Networking [CX 6300](#) Switch Series is a modern, flexible, and intelligent family of stackable switches ideal for access, aggregation, and data center top-of-rack (ToR). Featuring a cloud-native design and fully programmable operating system (OS). The CX 6300 delivers advanced monitoring and troubleshooting with capabilities like a real-time network analytics engine, HPE Aruba Networking Switch Multi-Edit Software and flexible deployment options to implement and validate network configurations.

A powerful Gen7 ASIC architecture delivers fast, non-blocking performance for AI, Wi-Fi 7, and Internet of Things (IoT) requirements. HPE Aruba Networking Virtual Stacking Framework (VSF) allows for stacking of up to 10 switches, providing scale and simplified management. This flexible series has built-in high-speed uplinks and supports high-density IEEE 802.3bt high-power PoE with HPE Smart Rate multi-gigabit Ethernet.

- High availability with choice between 2 to 10-member Virtual Switching Framework (VSF) stacking for scale, or 2-member Virtual Switching Extension (VSX) cluster for active-active redundancy
- Options include 24 to 48-port of HPE Smart Rate multi-gigabit (1/2.5/5/10GbE) and 1GbE fiber, supporting up to 90W 802.11bt PoE, all with telemetry and automation via the CX Network Analytics Engine
- Manage through single point of control with HPE Aruba Networking Central across wired, wireless, and WAN. Dynamic segmentation enables enhanced security and simple access for users and IoT

Features

AI-ready performance and power

The HPE Aruba Networking CX 6300 Switch Series is a wire-speed solution that uses a fully distributed architecture with Gen7 ASICs that deliver low latency, increased packet buffering, and intelligent power consumption for AI, Wi-Fi 7, and Internet of Things (IoT) requirements.

HPE Aruba Networking Virtual Switching Framework (VSF) allows you to quickly grow your network using high performance front plane stacking. Four built-in uplinks support speeds of up to 10, 25, 50, and 100GbE for a total of 200 to 400 Gbps of stacking throughput per switch.

HPE Aruba Networking Virtual Switching Extension (VSX) and an inter-switch link (ISL) provides for a high availability solution that maintains state synchronization and an independent control plane across a 2-member active-active switch design [2].

HPE Smart Rate multi-gigabit Ethernet delivers adaptive speed options for Wi-Fi, Internet of Things (IoT), and other clients, alongside Class 4 (30W), Class 6 (60W), and Class 8 (90W) PoE on each port (720W, 1440W, and 2880W maximum PoE budget options).

Additional features include a hibernation mode that enables CX 6300 and CX 6300L (Layer 2-only) switches to schedule downtime to conserve energy. Note: CX 6300L stackable switches are Layer 2-only, balancing scalability, high-capacity, and cost-effective connectivity.

Automation and analytics

The HPE Aruba Networking CX 6300 Switch Series delivers unparalleled visibility with built-in analytics for real-time monitoring and a time series database (TSDB) that stores configuration and operational state data, making it available to quickly resolve network issues.

HPE Aruba Networking Central provides secure, AI-native full-stack network management and operations to optimize performance, accelerate troubleshooting, and unify wired networks with Wi-Fi, wide area networks, and more.

HPE Aruba Networking CX Network Analytics Engine (NAE) provides real-time insights and actions, analyzing events that can impact network health and even mitigating problems directly through quarantining to support network, application, system and security operations.

HPE Aruba Networking Switch Multi-Edit Software introduces automation that allows for rapid network-wide changes and helps ensure policy conformance post network updates. Intelligent capabilities include search, edit, validation (including conformance checking), deployment, and audit features.

Import switch information into HPE Aruba Networking Switch Multi-Edit Software for simplified configuration management and to continual conformance validation.

Full stack management and security

The HPE Aruba Networking CX 6300 Switch Series is supported on HPE Aruba Networking Central for single point of control management that delivers enhanced network visibility and an expanded AI toolset, addressing the scale and demands of the most mission-critical environments.

Dynamic segmentation that automatically applies and enforces user, device, and application-aware policies on HPE Aruba Networking wired and wireless infrastructures.

Automated device profiling, role-based access control, and Layer 7 firewall features deliver enhanced visibility and performance for a better end-user experience and streamlined IT operations. Application recognition and control are available through CX Advanced Feature Pack [1].

Switch-to-switch tunnels enable scalable multi-tenancy support with Virtual Extensible Local-Area Networks (VXLAN) to VRF mapping, while allowing policy application through user roles [1].

Reduce manual IT operation tasks around initial deployment or on-going configuration changes to accommodate adds, moves, and changes with colorless ports using local user roles and local MAC authentication (LMA).

Deploy in data center topologies

HPE offers customers highly differentiated pre-engineered IT infrastructure solutions that span a wide variety HPE Compute, HPE Storage, HPE Networking that span virtualization, vSAN™, HCI, HPC, MCS, Microsoft, SAP HANA®, VMware®, Nutanix application and IaaS service offerings.

The 10/25 and 40/100 G CX switches can be deployed as part of an HPE integrated and mixed compute, storage and networking configuration and deployments.

These ready-to-deploy, integrated IT data center solutions help simplify and speed IT service delivery while reducing the time, risk, and expertise needed to deploy complex solutions.

Technical specifications	HPE Aruba Networking CX 6300 Switch Series
Power consumption	Up to 211W depending on model
Input voltage	Maximum 120V/208V–240V depending on PSU model
Ports	Up to 48-port of HPE Smart Rate (1G/2.5 G/5G/10GbE)
Latency	Depending on model
Switching capacity	Up to 880 Gbps to 1760 Gbps, depending on model and configuration
Stacking capabilities	Up to 10-members per stack. Note: CX 6300L switches only stack with other CX 6300L switches
Throughput	Up to 660 Mpps to 1310 Mpps, depending on model and configuration
Memory and processor	CPU: Dual-core Arm® Cortex-A9 @ 1.8GHz Memory: 8 GB DDR4, 32 GB eMMC Flash: 8 MB, 16 MB, or 32 MB, depending on model and configuration
Power supply	2 field-replaceable, hot-swappable power supply slots
PoE capability	Maximum PoE Power: Up to 370W, 720W, 1440W, 2640W, or 2880W, depending on model and installed power supplies
Management features	Management flexibility with support for HPE Aruba Networking Central, easy-to-use Web GUI, CLI, and HPE Aruba Networking Switch Multi-Edit Software
Operating temperature	32°F to 113°F (0°C to 45°C) up to 5000 ft. Derate -1°C for every 1000 ft from 5000 ft to 10000 ft. Can support excursion to 131°F (55°C) for short periods of time [3].
Weight	6.02 kg, maximum, depending on model
Product dimensions (metric)	4.4 x 44.2 x 38.5 cm, maximum, depending on model
Warranty	Limited lifetime warranty . See warranty details.

[1] Features not supported on CX 6300L switches (S3L75A, S3L76A, S3L77A)

[2] The simultaneous use of HPE Aruba Networking Virtual Switching Framework stacking and its cluster is not supported. A switch may either be its member or an HPE Aruba Networking Virtual Switching Extension cluster.

[3] No more than 96 consecutive hours and no more than 360 hours total (15 days) in 1 year.

[4] 50 G capability is for use with 50 G DACs for both interconnect and VSF stacking. 50 G transceivers and DACs are not supported on SOE91A and SOX44A switch models, which requires QSFP to SFP56 DAC cable for VSF stacking with other CX 6300F and CX 6300 M switch models only. VSF stacking not supported on 1 G ports.

[5] 100 M use on HPE Smart Rate ports is limited to full duplex only. For 100 M half duplex support, use 1 G ports on other models.

SKU comparison

	HPE ANW CX 6300L 48p Smart Rate 100M/1G/2.5G/5G Class6/8 2p SFP56 50G 2p SFP+ 1G/10G LRM Layer2 Sw (S3L77A)	HPE Aruba Networking CX 6300F 24-port 1GbE and 4-port SFP56 Switch (JL668A)	HPE Aruba Networking CX 6300F 24-port 1GbE Class 4 PoE and 4-port SFP56 Switch (JL666A)
Differentiator	Layer 2 only L switch does not support Layer 3 features in the F and M models Class 4 PoE/PoE+	Non-PoE	Class 4 PoE/PoE+
Power consumption	With single JL086A PSU: Idle: 207W 100% Traffic Rate: 283W With single JL087A PSU: Idle: 208W 100% Traffic Rate: 282W With single JL670A PSU: Idle: 211W 100% Traffic Rate: 283W	Idle: 49W 100% Traffic Rate: 63W	Idle: 52W 100% Traffic Rate: 67W
Input voltage	JL670A PSU: 110V-120V/208V-240V JL086A PSU: 100V-240V JL087A PSU: 110V-240V	Fixed PSU: 100V-120V/200V-240V	Fixed PSU: 100V-120V/200V-240V
Ports	48 x 10/100/1000 BaseT PoE+ ports supporting up to 30W per port 4 x 1G/10G/25G/50G [4] SFP ports Supports PoE standards IEEE 802.3af, 802.3at 1 x USB-C console port 1 x USB Type-A host port 1 x OOBM port	24 x 10/100/1000 BaseT ports 4 x 1G/10G/25G/50G [4] SFP ports Supports PoE standards IEEE 802.3af, 802.3at 1 x USB-C console port 1 x USB Type-A host port 1 x OOBM port	24 x 10/100/1000 BaseT ports supporting up to 30W per port 4 x 1G/10G/25G/50G [4] SFP ports Supports PoE standards IEEE 802.3af, 802.3at 1 x USB-C console port 1 x USB Type-A host port 1 x OOBM port
Latency	1 Gbps: 4.24 s 10 Gbps: 1.50 s 25 Gbps: 2.91 s 50 Gbps: 3.49 s	1 Gbps: 2.28 s 10 Gbps: 1.46 s 25 Gbps: 1.90 s 50 Gbps: 3.49 s	1 Gbps: 2.28 s 10 Gbps: 1.46 s 25 Gbps: 1.90 s 50 Gbps: 3.49 s
Switching capacity	720 Gbps	448 Gbps	448 Gbps
Stacking capabilities	Up to 10-members per stack. Note: CX 6300L switches only stack with other CX 6300L switches	Up to 10-members per stack. Note: CX 6300L switches only stack with other CX 6300L switches	Up to 10-members per stack. Note: CX 6300L switches only stack with other CX 6300L switches
Throughput	535 Mpps	334 Mpps	334 Mpps
Memory and processor	Quad Core Arm Cortex™ A72 @ 1.8GHz, 8 GB DDR4, 32 GB eMMC 16 MB Shared Packet Buffer Memory	CPU: Dual-core Arm® Cortex-A9 @ 1.8GHz Memory: 8 GB DDR4, 32 GB eMMC Flash: 8 MB, 16 MB, or 32 MB, depending on model and configuration	CPU: Dual-core Arm® Cortex-A9 @ 1.8GHz Memory: 8 GB DDR4, 32 GB eMMC Flash: 8 MB, 16 MB, or 32 MB, depending on model and configuration
Power supply	2 fieldreplaceable, hotswappable power supply slots 1 minimum power supply required (ordered separately). Supported PSUs JL086A, JL087A and JL670A.	Internal (fixed) power supply (200W)	Internal (fixed) power supply (950W)

	HPE ANW CX 6300L 48p Smart Rate 100M/1G/2.5G/5G Class6/8 2p SFP56 50G 2p SFP+ 1G/10G LRM Layer2 Sw (S3L77A)	HPE Aruba Networking CX 6300F 24-port 1GbE and 4-port SFP56 Switch (JL668A)	HPE Aruba Networking CX 6300F 24-port 1GbE Class 4 PoE and 4-port SFP56 Switch (JL666A)
PoE capability	Maximum PoE power: 2880W		Maximum PoE power: 370W
Management features	1 default VRF, 1 management VRF	Management flexibility with support for HPE Aruba Networking Central, easy-to-use Web GUI, CLI, and HPE Aruba Networking Switch Multi-Edit Software	Management flexibility with support for HPE Aruba Networking Central, easy-to-use Web GUI, CLI, and HPE Aruba Networking Switch Multi-Edit Software
Operating temperature	32°F to 113°F (0°C to 45°C) up to 5,000 ft. Derate -1 degree C for every 1,000 ft from 5,000 ft to 10,000 ft. Can support excursion to 131°F (55°C) for short periods of time. No more than 96 consecutive hours and no more than 360 hours total (15 days) in 1 year.	32°F to 113°F (0°C to 45°C) up to 5000 ft. Derate 1°C for every 1000 ft from 5000 ft to 10000 ft. Can support excursion to 131°F (55°C) for short periods of time [3].	32°F to 113°F (0°C to 45°C) up to 5000 ft. Derate 1°C for every 1000 ft from 5000 ft to 10000 ft. Can support excursion to 131°F (55°C) for short periods of time [3].
Warranty	Limited lifetime warranty. See warranty details.	Limited lifetime warranty. See warranty details.	Limited lifetime warranty. See warranty details.

	HPE Aruba Networking CX 6300F 24p 10M/100M/1G 4p SFP56 50G TAA Switch (SOG98A)	HPE Aruba Networking CX 6300F 24p 10M/100M/1G Class4 PoE 4p SFP56 50G TAA Switch (SOG96A)	HPE Aruba Networking CX 6300F 48-port 1GbE and 4-port SFP56 Switch (JL667A)
Differentiator	Non-PoE TAA certified	Class 4 PoE/PoE+ TAA certified	Non-PoE
Power consumption	Idle: 49W 100% Traffic Rate: 63W	Idle: 52W 100% Traffic Rate: 67W	Idle: 52W 100% Traffic Rate: 74W
Input voltage	Fixed PSU: 100V120V/200V240V	Fixed PSU: 100V120V/200V240V	Fixed PSU: 100V-120V/200V-240V
Ports	24 x 10/100/1000 BaseT ports 4 x 1G/10G/25G/50G [4] SFP ports Supports PoE standards IEEE 802.3af, 802.3at 1 x USB-C console port 1 x USB Type-A host port 1 x OOBM port	24 x 10/100/1000 BaseT ports supporting up to 30W per port 4 x 1G/10G/25G/50G [4] SFP ports Supports PoE standards IEEE 802.3af, 802.3at 1 x USB-C console port 1 x USB Type-A host port 1 x OOBM port	48 x 10/100/1000 BaseT ports 4 x 1G/10G/25G/50G [4] SFP ports Supports PoE standards IEEE 802.3af, 802.3at 1 x USB-C console port 1 x USB Type-A host port 1 x OOBM port
Latency	1 Gbps: 2.28 s 10 Gbps: 1.46 s 25 Gbps: 1.90 s 50 Gbps: 3.49 s	1 Gbps: 2.28 s 10 Gbps: 1.46 s 25 Gbps: 1.90 s 50 Gbps: 3.49 s	1 Gbps: 2.28 s 10 Gbps: 1.46 s 25 Gbps: 1.90 s 50 Gbps: 3.49 s
Switching capacity	448 Gbps	448 Gbps	496 Gbps
Stacking capabilities	Up to 10-members per stack. Note: CX 6300L switches only stack with other CX 6300L switches	Up to 10-members per stack. Note: CX 6300L switches only stack with other CX 6300L switches	Up to 10-members per stack. Note: CX 6300L switches only stack with other CX 6300L switches
Throughput	334 Mpps	334 Mpps	369 Mpps
Memory and processor	CPU: Dual-core Arm® Cortex-A9 @ 1.8GHz Memory: 8 GB DDR4, 32 GB eMMC Flash: 8 MB, 16 MB, or 32 MB, depending on model and configuration	CPU: Dual-core Arm® Cortex-A9 @ 1.8GHz Memory: 8 GB DDR4, 32 GB eMMC Flash: 8 MB, 16 MB, or 32 MB, depending on model and configuration	CPU: Dual-core Arm® Cortex-A9 @ 1.8GHz Memory: 8 GB DDR4, 32 GB eMMC Flash: 8 MB, 16 MB, or 32 MB, depending on model and configuration
Power supply	Internal (fixed) power supply (200W)	Internal (fixed) power supply (950W)	Internal (fixed) power supply (200W)
PoE capability		Maximum PoE power: 370W	
Management features	Management flexibility with support for HPE Aruba Networking Central, easy-to-use Web GUI, CLI, and HPE Aruba Networking Switch Multi-Edit Software	Management flexibility with support for HPE Aruba Networking Central, easy-to-use Web GUI, CLI, and HPE Aruba Networking Switch Multi-Edit Software	Management flexibility with support for HPE Aruba Networking Central, easy-to-use Web GUI, CLI, and HPE Aruba Networking Switch Multi-Edit Software
Operating temperature	32°F to 113°F (0°C to 45°C) up to 5000 ft. Derate 1°C for every 1000 ft from 5000 ft to 10000 ft. Can support excursion to 131°F (55°C) for short periods of time [3].	32°F to 113°F (0°C to 45°C) up to 5000 ft. Derate 1°C for every 1000 ft from 5000 ft to 10000 ft. Can support excursion to 131°F (55°C) for short periods of time [3].	32°F to 113°F (0°C to 45°C) up to 5000 ft. Derate 1°C for every 1000 ft from 5000 ft to 10000 ft. Can support excursion to 131°F (55°C) for short periods of time [3].
Warranty	Limited lifetime warranty. See warranty details.	Limited lifetime warranty. See warranty details.	Limited lifetime warranty. See warranty details.

	HPE Aruba Networking CX 6300F 48-port 1GbE Class 4 PoE and 4-port SFP56 Switch (JL665A)	HPE Aruba Networking CX 6300F 48p 10M/100M/1G 4p SFP56 50G TAA Switch (SOG97A)	HPE Aruba Networking CX 6300F 48p 10M/100M/1G Class4 PoE 4p SFP56 50G TAA Switch (SOG95A)
Differentiator	Class 4 PoE/PoE+	Non-PoE TAA certified	Class 4 PoE/PoE+ TAA certified
Power consumption	Idle: 63W 100% Traffic Rate: 86W	Idle: 52W 100% Traffic Rate: 74W	Idle: 63W 100% Traffic Rate: 86W
Input voltage	Fixed PSU: 100V–120V/200V–240V	Fixed PSU: 100V120V/200V240V	Fixed PSU: 100V120V/200V240V
Ports	48 x 10/100/1000 BaseT PoE+ ports supporting up to 30W per port 4 x 1G/10G/25G/50G [4] SFP ports Supports PoE standards IEEE 802.3af, 802.3at 1 x USB-C console port 1 x USB Type-A host port 1 x OOBM port	48 x 10/100/1000 BaseT ports 4 x 1G/10G/25G/50G [4] SFP ports Supports PoE standards IEEE 802.3af, 802.3at 1 x USB-C console port 1 x USB Type-A host port 1 x OOBM port	48 x 10/100/1000 BaseT PoE+ ports supporting up to 30W per port 4 x 1G/10G/25G/50G [4] SFP ports Supports PoE standards IEEE 802.3af, 802.3at 1 x USB-C console port 1 x USB Type-A host port 1 x OOBM port
Latency	1 Gbps: 2.28 s 10 Gbps: 1.46 s 25 Gbps: 1.90 s 50 Gbps: 3.49 s	1 Gbps: 2.28 s 10 Gbps: 1.46 s 25 Gbps: 1.90 s 50 Gbps: 3.49 s	1 Gbps: 2.28 s 10 Gbps: 1.46 s 25 Gbps: 1.90 s 50 Gbps: 3.49 s
Switching capacity	496 Gbps	496 Gbps	496 Gbps
Stacking capabilities	Up to 10-members per stack. Note: CX 6300L switches only stack with other CX 6300L switches	Up to 10-members per stack. Note: CX 6300L switches only stack with other CX 6300L switches	Up to 10-members per stack. Note: CX 6300L switches only stack with other CX 6300L switches
Throughput	369 Mpps	369 Mpps	369 Mpps
Memory and processor	CPU: Dual-core Arm® Cortex-A9 @ 1.8GHz Memory: 8 GB DDR4, 32 GB eMMC Flash: 8 MB, 16 MB, or 32 MB, depending on model and configuration	CPU: Dual-core Arm® Cortex-A9 @ 1.8GHz Memory: 8 GB DDR4, 32 GB eMMC Flash: 8 MB, 16 MB, or 32 MB, depending on model and configuration	CPU: Dual-core Arm® Cortex-A9 @ 1.8GHz Memory: 8 GB DDR4, 32 GB eMMC Flash: 8 MB, 16 MB, or 32 MB, depending on model and configuration
Power supply	Internal (fixed) power supply (950W)	Internal (fixed) power supply (200W)	Internal (fixed) power supply (950W)
PoE capability	Maximum PoE power: 740W		Maximum PoE power: 740W
Management features	Management flexibility with support for HPE Aruba Networking Central, easy-to-use Web GUI, CLI, and HPE Aruba Networking Switch Multi-Edit Software	Management flexibility with support for HPE Aruba Networking Central, easy-to-use Web GUI, CLI, and HPE Aruba Networking Switch Multi-Edit Software	Management flexibility with support for HPE Aruba Networking Central, easy-to-use Web GUI, CLI, and HPE Aruba Networking Switch Multi-Edit Software
Operating temperature	32°F to 113°F (0°C to 45°C) up to 5000 ft. Derate 1°C for every 1000 ft from 5000 ft to 10000 ft. Can support excursion to 131°F (55°C) for short periods of time [3].	32°F to 113°F (0°C to 45°C) up to 5000 ft. Derate 1°C for every 1000 ft from 5000 ft to 10000 ft. Can support excursion to 131°F (55°C) for short periods of time [3].	32°F to 113°F (0°C to 45°C) up to 5000 ft. Derate 1°C for every 1000 ft from 5000 ft to 10000 ft. Can support excursion to 131°F (55°C) for short periods of time [3].
Warranty	Limited lifetime warranty. See warranty details.	Limited lifetime warranty. See warranty details.	Limited lifetime warranty. See warranty details.

	HPE Aruba Networking CX 6300L 24p Smart Rate 1G/2.5G/5G/10G CL6 2p SFP56 50G 2p SFP28 25G L2 Switch (S3L75A)	HPE Aruba Networking CX 6300L 48p Smart Rate 100M/1G/2.5G/5G CL8 2p SFP56 50G 2p SFP28 25G L2 Switch (S3L76A)	HPE Aruba Networking CX 6300M 12p CL8 PoE 36p CL6 PoE Smart Rate 1G/2.5G/5G 2p 50G 2p 10G Switch (R8S91A)
Differentiator	Layer 2 only L switch does not support Layer 3 features in the F and M models Non-PoE	Layer 2 only L switch does not support Layer 3 features in the F and M models Non-PoE	Class 4 PoE/PoE+
Power consumption	With JL086A PSU: Hibernation (0 rpm fan): 37W Idle: 90W 100% Traffic Rate: 143W With JL087A PSU: Hibernation (0 rpm fan):41W Idle: 90W 100% Traffic Rate: 140W With JL670A PSU: Hibernation (0 rpm fan): 35W Idle: 101W 100% Traffic Rate: 152W	With JL086A PSU: Hibernation (0 rpm fan): 43W Idle: 104W 100% Traffic Rate: 173W With JL087A PSU: Hibernation (0 rpm fan): 41W Idle: 104W 100% Traffic Rate: 173W With JL670A PSU: Hibernation (0 rpm fan): 37W Idle: 115W 100% Traffic Rate: 184W	With JL086A PSU: Idle: 70W 100% Traffic Rate: 90W With JL087A PSU: Idle: 71W 100% Traffic Rate: 88W With JL670A PSU: Idle: 73W 100% Traffic Rate: 96W
Input voltage	JL670A PSU: 110V–120V/208V–240V JL086A PSU: 100V–240V JL087A PSU: 110V–240V	JL670A PSU: 110V–120V/208V–240V JL086A PSU: 100V–240V JL087A PSU: 110V–240V	JL670A PSU: 110V–120V/208V–240V JL086A PSU: 100V–240V JL087A PSU: 110V–240V
Ports	24 x HPE Smart Rate 100 M [5]/1G/2.5G/5G BaseT Class 6 PoE ports supporting up to 60W per port 4 x 1G/10G/25G/50G [4] SFP ports Supports PoE standards IEEE 802.3af, 802.3at and 802.3bt (up to 60W) 1 x USB-C console port 1 x USB Type-A host port 1 x OOBM port	48 x HPE Smart Rate 100 M [5]/1G/2.5G/5G BaseT Class 6 PoE ports supporting up to 60W per port 4 x 1G/10G/25G/50G [4] SFP ports Supports PoE standards IEEE 802.3af, 802.3at and 802.3bt (up to 60W) 1 x USB-C console port 1 x USB Type-A host port 1 x OOBM port	48 x 10/100/1000 BaseT PoE+ ports supporting up to 30W per port 4 x 1G/10G/25G/50G [4] SFP ports Supports PoE standards IEEE 802.3af, 802.3at 1 x USB-C console port 1 x USB Type-A host port 1 x OOBM port
Latency	1 Gbps: 4.24 s 10 Gbps: 1.50 s 25 Gbps: 2.91 s 50 Gbps: 3.49 s	1 Gbps: 4.24 s 10 Gbps: 1.50 s 25 Gbps: 2.91 s 50 Gbps: 3.49 s	1 Gbps: 4.24 s 10 Gbps: 1.50 s 25 Gbps: 2.91 s 50 Gbps: 3.49 s
Switching capacity	780 Gbps	780 Gbps	496 Gbps
Stacking capabilities	Up to 10-members per stack. Note: CX 6300L switches only stack with other CX 6300L switches	Up to 10-members per stack. Note: CX 6300L switches only stack with other CX 6300L switches	Up to 10-members per stack. Note: CX 6300L switches only stack with other CX 6300L switches
Throughput	580 Mpps	580 Mpps	369 Mpps
Memory and processor	Quad Core Arm Cortex™ A72 @ 1.8GHz, 8 GB DDR4, 32 GB eMMC 16 MB Shared Packet Buffer Memory	Quad Core Arm Cortex™ A72 @ 1.8GHz, 8 GB DDR4, 32 GB eMMC 16 MB Shared Packet Buffer Memory	Quad Core Arm Cortex™ A72 @ 1.8GHz, 8 GB DDR4, 32 GB eMMC 16 MB Shared Packet Buffer Memory

	HPE Aruba Networking CX 6300L 24p Smart Rate 1G/2.5G/5G/10G CL6 2p SFP56 50G 2p SFP28 25G L2 Switch (S3L75A)	HPE Aruba Networking CX 6300L 48p Smart Rate 100M/1G/2.5G/5G CL8 2p SFP56 50G 2p SFP28 25G L2 Switch (S3L76A)	HPE Aruba Networking CX 6300M 12p CL8 PoE 36p CL6 PoE Smart Rate 1G/2.5G/5G 2p 50G 2p 10G Switch (R8S91A)
Power supply	2 fieldreplaceable, hotswappable power supply slots 1 minimum power supply required (ordered separately). Supported PSUs JL086A, JL087A and JL670A.	2 fieldreplaceable, hotswappable power supply slots 1 minimum power supply required (ordered separately). Supported PSUs JL086A, JL087A and JL670A.	2 fieldreplaceable, hotswappable power supply slots 1 minimum power supply required (ordered separately). Supported PSUs JL086A, JL087A and JL670A.
PoE capability	Maximum PoE power:2880W	Maximum PoE power: 2880W	Maximum PoE power: 1440W
Management features	1 default VRF, 1 management VRF	1 default VRF, 1 management VRF	Management flexibility with support for HPE Aruba Networking Central, easy-to-use Web GUI, CLI, and HPE Aruba Networking Switch Multi-Edit Software
Operating temperature	32°F to 113°F (0°C to 45°C) up to 5000 ft. Derate 1°C for every 1000 ft from 5000 ft to 10000 ft.	32°F to 113°F (0°C to 45°C) up to 5,000 ft. Derate -1 degree C for every 1,000 ft from 5,000 ft to 10,000 ft. Can support excursion to 131°F (55°C) for short periods of time. No more than 96 consecutive hours and no more than 360 hours total (15 days) in 1 year.	32°F to 113°F (0°C to 45°C) up to 5000 ft. Derate 1°C for every 1000 ft from 5000 ft to 10000 ft. Can support excursion to 131°F (55°C) for short periods of time [3].
Warranty	Limited lifetime warranty. See warranty details.	Limited lifetime warranty. See warranty details.	Limited lifetime warranty. See warranty details.

	HPE Aruba Networking CX 6300M 24-port 1GbE and 4-port SFP56 Switch (JL664A)	HPE Aruba Networking CX 6300M 24-port 1GbE Class 4 PoE and 4-port SFP56 Switch (JL662A)	HPE Aruba Networking CX 6300M 24-port HPE Smart Rate 1/2.5/5GbE Class 6 PoE and 4-port SFP56 Switch (JL660A)
Differentiator	Non-PoE	Class 4 PoE/PoE+	Class 4 PoE/PoE+
Power consumption	Idle: 49W 100% Traffic Rate: 64W	With JL086A PSU: Idle: 60W 100% Traffic Rate: 76W With JL087A PSU: Idle: 59W 100% Traffic Rate: 74W With JL670A PSU: Idle: 62W 100% Traffic Rate: 81W	With JL086A PSU: Idle: 93W 100% Traffic Rate: 137W With JL087A PSU: Idle: 91W 100% Traffic Rate: 131W With JL670A PSU: Idle: 98W 100% Traffic Rate: 139W
Input voltage	JL085A PSU: 100V–240V	JL670A PSU: 110V–120V/208V–240V JL086A PSU: 100V–240V JL087A PSU: 110V–240V	JL670A PSU: 110V–120V/208V–240V JL086A PSU: 100V–240V JL087A PSU: 110V–240V
Ports	24 x 10/100/1000 BaseT ports 4 x 1G/10G/25G/50G [4] SFP ports 1 x USB-C console port 1 x USB Type-A host port 1 x OOBM port	24 x 10/100/1000 BaseT PoE+ ports supporting up to 30W per port 4 x 1G/10G/25G/50G [4] SFP ports Supports PoE standards IEEE 802.3af, 802.3at 1 x USB-C console port 1 x USB Type-A host port 1 x OOBM port	24 x HPE Smart Rate 100 M [5]/1G/2.5G/5G BaseT Class 6 PoE ports supporting up to 60W per port 4 x 1G/10G/25G/50G [4] SFP ports Supports PoE standards IEEE 802.3af, 802.3at and 802.3bt (up to 60W) 1 x USB-C console port 1 x USB Type-A host port 1 x OOBM port
Latency	1 Gbps: 2.28 s 10 Gbps: 1.46 s 25 Gbps: 1.90 s 50 Gbps: 3.49 s	1 Gbps: 2.28 s 10 Gbps: 1.46 s 25 Gbps: 1.90 s 50 Gbps: 3.49 s	1 Gbps: 2.28 s 10 Gbps: 1.46 s 25 Gbps: 1.90 s 50 Gbps: 3.49 s
Switching capacity	448 Gbps	448 Gbps	640 Gbps
Stacking capabilities	Up to 10-members per stack. Note: CX 6300L switches only stack with other CX 6300L switches	Up to 10-members per stack. Note: CX 6300L switches only stack with other CX 6300L switches	Up to 10-members per stack. Note: CX 6300L switches only stack with other CX 6300L switches
Throughput	334 Mpps	334 Mpps	476 Mpps
Memory and processor	CPU: Dual-core Arm® Cortex-A9 @ 1.8GHz Memory: 8 GB DDR4, 32 GB eMMC Flash: 8 MB, 16 MB, or 32 MB, depending on model and configuration	CPU: Dual-core Arm® Cortex-A9 @ 1.8GHz Memory: 8 GB DDR4, 32 GB eMMC Flash: 8 MB, 16 MB, or 32 MB, depending on model and configuration	CPU: Dual-core Arm® Cortex-A9 @ 1.8GHz Memory: 8 GB DDR4, 32 GB eMMC Flash: 8 MB, 16 MB, or 32 MB, depending on model and configuration
Power supply	2 fieldreplaceable, hotswappable power supply slots 1 minimum power supply required (ordered separately). Supports JL085A PSU.	2 fieldreplaceable, hotswappable power supply slots 1 minimum power supply required (ordered separately). Supported PSUs JL086A, JL087A and JL670A.	2 fieldreplaceable, hotswappable power supply slots 1 minimum power supply required (ordered separately). Supported PSUs JL086A, JL087A and JL670A.
PoE capability		Maximum PoE power: 720W	Maximum PoE power: 1440W

	HPE Aruba Networking CX 6300M 24-port 1GbE and 4-port SFP56 Switch (JL664A)	HPE Aruba Networking CX 6300M 24-port 1GbE Class 4 PoE and 4-port SFP56 Switch (JL662A)	HPE Aruba Networking CX 6300M 24-port HPE Smart Rate 1/2.5/5GbE Class 6 PoE and 4-port SFP56 Switch (JL660A)
Management features	Management flexibility with support for HPE Aruba Networking Central, easy-to-use Web GUI, CLI, and HPE Aruba Networking Switch Multi-Edit Software	Management flexibility with support for HPE Aruba Networking Central, easy-to-use Web GUI, CLI, and HPE Aruba Networking Switch Multi-Edit Software	Management flexibility with support for HPE Aruba Networking Central, easy-to-use Web GUI, CLI, and HPE Aruba Networking Switch Multi-Edit Software
Operating temperature	32°F to 113°F (0°C to 45°C) up to 5000 ft. Derate 1°C for every 1000 ft from 5000 ft to 10000 ft. Can support excursion to 131°F (55°C) for short periods of time [3].	32°F to 113°F (0°C to 45°C) up to 5000 ft. Derate 1°C for every 1000 ft from 5000 ft to 10000 ft. Can support excursion to 131°F (55°C) for short periods of time [3].	32°F to 113°F (0°C to 45°C) up to 5000 ft. Derate 1°C for every 1000 ft from 5000 ft to 10000 ft. Can support excursion to 131°F (55°C) for short periods of time [3]. Requires two fan trays to support excursion.
Warranty	Limited lifetime warranty. See warranty details.	Limited lifetime warranty. See warranty details.	Limited lifetime warranty. See warranty details.

	HPE Aruba Networking CX 6300M 24-port SFP+ and 4-port SFP56 Switch (JL658A)	HPE Aruba Networking CX 6300M 24p 10M/100M/1G 4p SFP56 50G TAA Switch (SOG01A)	HPE Aruba Networking CX 6300M 24p 10M/100M/1G Class4 PoE 4p SFP56 50G TAA Switch (SOF99A)
Differentiator	Non-PoE	Non-PoE TAA certified	Class 4 PoE/PoE+ TAA certified
Power consumption	Idle: 51W 100% Traffic Rate: 85W	Idle: 49W 100% Traffic Rate: 64W	With JL086A PSU: Idle: 60W 100% Traffic Rate: 76W With JL087A PSU: Idle: 59W 100% Traffic Rate: 74W With JL670A PSU: Idle: 62W 100% Traffic Rate: 81W
Input voltage	JL085A PSU: 100V–240V	JL085A PSU: 100V–240V	JL670A PSU: 110V–120V/208V–240V JL086A PSU: 100V–240V JL087A PSU: 110V–240V
Ports	24 x 1G/10G SFP+ ports 4 x 1G/10G/25G/50G [4] SFP ports 1 x USB-C console port 1 x USB Type-A host port 1 x OOBM port	24-port 10/100/1000 BaseT ports 4x 1G/10G/25G/50G [4] SFP ports 1x USB-C Console Port 1x OOBM port 1x USB Type A Host port	24 x 10/100/1000 BaseT PoE+ ports supporting up to 30W per port 4 x 1G/10G/25G/50G [4] SFP ports Supports PoE standards IEEE 802.3af, 802.3at 1 x USB-C console port 1 x USB Type-A host port 1 x OOBM port
Latency	1 Gbps: 2.28 s 10 Gbps: 1.46 s 25 Gbps: 1.90 s 50 Gbps: 3.49 s	1 Gbps: 2.28 s 10 Gbps: 1.46 s 25 Gbps: 1.90 s 50 Gbps: 3.49 s	1 Gbps: 2.28 s 10 Gbps: 1.46 s 25 Gbps: 1.90 s 50 Gbps: 3.49 s
Switching capacity	880 Gbps	448 Gbps	448 Gbps
Stacking capabilities	Up to 10-members per stack. Note: CX 6300L switches only stack with other CX 6300L switches	Up to 10-members per stack. Note: CX 6300L switches only stack with other CX 6300L switches	Up to 10-members per stack. Note: CX 6300L switches only stack with other CX 6300L switches
Throughput	654 Mpps	334 Mpps	334 Mpps
Memory and processor	CPU: Dual-core Arm® Cortex-A9 @ 1.8GHz Memory: 8 GB DDR4, 32 GB eMMC Flash: 8 MB, 16 MB, or 32 MB, depending on model and configuration	CPU: Dual-core Arm® Cortex-A9 @ 1.8GHz Memory: 8 GB DDR4, 32 GB eMMC Flash: 8 MB, 16 MB, or 32 MB, depending on model and configuration	CPU: Dual-core Arm® Cortex-A9 @ 1.8GHz Memory: 8 GB DDR4, 32 GB eMMC Flash: 8 MB, 16 MB, or 32 MB, depending on model and configuration
Power supply	2 fieldreplaceable, hotswappable power supply slots 1 minimum power supply required (ordered separately). Supports JL085A PSU.	2 fieldreplaceable, hotswappable power supply slots 1 minimum power supply required (ordered separately). Supports JL085A PSU.	2 fieldreplaceable, hotswappable power supply slots 1 minimum power supply required (ordered separately). Supported PSUs JL086A, JL087A and JL670A.
PoE capability		##BL##BLANK##ANK##	Maximum PoE power: 720W

	HPE Aruba Networking CX 6300M 24-port SFP+ and 4-port SFP56 Switch (JL658A)	HPE Aruba Networking CX 6300M 24p 10M/100M/1G 4p SFP56 50G TAA Switch (SOG01A)	HPE Aruba Networking CX 6300M 24p 10M/100M/1G Class4 PoE 4p SFP56 50G TAA Switch (SOF99A)
Management features	Management flexibility with support for HPE Aruba Networking Central, easy-to-use Web GUI, CLI, and HPE Aruba Networking Switch Multi-Edit Software	Management flexibility with support for HPE Aruba Networking Central, easy-to-use Web GUI, CLI, and HPE Aruba Networking Switch Multi-Edit Software	Management flexibility with support for HPE Aruba Networking Central, easy-to-use Web GUI, CLI, and HPE Aruba Networking Switch Multi-Edit Software
Operating temperature	32°F to 113°F (0°C to 45°C) up to 5000 ft. Derate 1°C for every 1000 ft from 5000 ft to 10000 ft. Can support excursion to 131°F (55°C) for short periods of time [3]. Operating temperature is reduced to 32°F (0°C) to 104°F (40°C) up to 5000 ft when 10 G SFP+ LR or ER transceivers are installed.	32°F to 113°F (0°C to 45°C) up to 5000 ft. Derate 1°C for every 1000 ft from 5000 ft to 10000 ft. Can support excursion to 131°F (55°C) for short periods of time [3].	32°F to 113°F (0°C to 45°C) up to 5000 ft. Derate 1°C for every 1000 ft from 5000 ft to 10000 ft. Can support excursion to 131°F (55°C) for short periods of time [3].
Warranty	Limited lifetime warranty. See warranty details.	Limited lifetime warranty. See warranty details.	Limited lifetime warranty. See warranty details.

	HPE Aruba Networking CX 6300M 24p SFP 1G 2p SFP56 50G 2p SFP28 25G MACsec Switch (S4P44A)	HPE Aruba Networking CX 6300M 24p SFP 1G 2p SFP56 50G 2p SFP28 25G MACsec TAA Switch (S4P48A)	HPE Aruba Networking CX 6300M 24p SFP+ 1G/10G 4p SFP56 50G 2xFan PSU Bundle (S5Z46A)
Differentiator	Non-PoE	Non-PoE TAA certified	Non-PoE
Power consumption	With JL086A PSU: Idle: 133W 100% Traffic Rate: 199W With JL087A PSU: Idle: 138W 100% Traffic Rate: 193W With JL670A PSU: Idle: 140W 100% Traffic Rate: 201W	Idle: 51W 100% Traffic Rate: 85W	Idle: 51W 100% Traffic Rate: 85W
Heat dissipation			Max: 853 BTU/hr Idle: 174 BTU/hr
Input voltage	JL670A PSU: 110V–120V/208V–240V JL086A PSU: 100V–240V JL087A PSU: 110V–240V	JL085A PSU: 100V–240V	JL085A PSU: 100V–240V
Ports	48 x HPE Smart Rate 100 M [5]/1G/2.5G/5G BaseT Class 6 PoE ports supporting up to 60W per port 4 x 1G/10G/25G/50G [4] SFP ports Supports PoE standards IEEE 802.3af, 802.3at and 802.3bt (up to 60W) 1 x USB-C console port 1 x USB Type-A host port 1 x OOBM port	24 x 1G/10G SFP+ ports 4 x 1G/10G/25G/50G [4] SFP ports 1 x USB-C console port 1 x USB Type-A host port 1 x OOBM port	24 x 1G/10G SFP+ ports 4 x 1G/10G/25G/50G [4] SFP ports 1 x USB-C console port 1 x USB Type-A host port 1 x OOBM port
Latency	1 Gbps: 4.24 s 10 Gbps: 1.50 s 25 Gbps: 2.91 s 50 Gbps: 3.49 s	1 Gbps: 2.28 s 10 Gbps: 1.46 s 25 Gbps: 1.90 s 50 Gbps: 3.49 s	1 Gbps: 2.28 s 10 Gbps: 1.46 s 25 Gbps: 1.90 s 50 Gbps: 3.49 s
Switching capacity	880 Gbps	880 Gbps	880 Gbps
Stacking capabilities	Up to 10-members per stack. Note: CX 6300L switches only stack with other CX 6300L switches	Up to 10-members per stack. Note: CX 6300L switches only stack with other CX 6300L switches	Up to 10-members per stack. Note: CX 6300L switches only stack with other CX 6300L switches
Throughput	654 Mpps	654 Mpps	654 Mpps
Memory and processor	CPU: Dual-core Arm® Cortex-A9 @ 1.8GHz Memory: 8 GB DDR4, 32 GB eMMC Flash: 8 MB, 16 MB, or 32 MB, depending on model and configuration	CPU: Dual-core Arm® Cortex-A9 @ 1.8GHz Memory: 8 GB DDR4, 32 GB eMMC Flash: 8 MB, 16 MB, or 32 MB, depending on model and configuration	CPU: Dual-core Arm® Cortex-A9 @ 1.8GHz Memory: 8 GB DDR4, 32 GB eMMC Flash: 8 MB, 16 MB, or 32 MB, depending on model and configuration
Power supply	2 field-replaceable, hot-swappable power supply slots 1 minimum power supply required (ordered separately). Supported PSUs JL085A and JL757A.	2 fieldreplaceable, hotswappable power supply slots 1 minimum power supply required (ordered separately). Supports JL085A PSU.	2 fieldreplaceable, hotswappable power supply slots

	HPE Aruba Networking CX 6300M 24p SFP 1G 2p SFP56 50G 2p SFP28 25G MACsec Switch (S4P44A)	HPE Aruba Networking CX 6300M 24p SFP 1G 2p SFP56 50G 2p SFP28 25G MACsec TAA Switch (S4P48A)	HPE Aruba Networking CX 6300M 24p SFP+ 1G/10G 4p SFP56 50G 2xFan PSU Bundle (S5Z46A)
PoE capability	Maximum PoE power: 2880W		
Management features	Management flexibility with support for HPE Aruba Networking Central, easy-to-use Web GUI, CLI, and HPE Aruba Networking Switch Multi-Edit Software	Management flexibility with support for HPE Aruba Networking Central, easy-to-use Web GUI, CLI, and HPE Aruba Networking Switch Multi-Edit Software	Management flexibility with support for HPE Aruba Networking Central, easy-to-use Web GUI, CLI, and HPE Aruba Networking Switch Multi-Edit Software
Operating temperature	32°F to 113°F (0°C to 45°C) up to 5000 ft. Derate 1°C for every 1000 ft from 5000 ft to 10000 ft. Can support excursion to 131°F (55°C) for short periods of time [3].	32°F to 113°F (0°C to 45°C) up to 5000 ft. Derate 1°C for every 1000 ft from 5000 ft to 10000 ft. Can support excursion to 131°F (55°C) for short periods of time [3]. Operating temperature is reduced to 32°F (0°C) to 104°F (40°C) up to 5000 ft when 10 G SFP+ LR or ER transceivers are installed.	32°F to 113°F (0°C to 45°C) up to 5000 ft. Derate 1°C for every 1000 ft from 5000 ft to 10000 ft. Can support excursion to 131°F (55°C) for short periods of time [3].
Warranty	Limited lifetime warranty. See warranty details.	Limited lifetime warranty. See warranty details.	Limited lifetime warranty. See warranty details.

	HPE Aruba Networking CX 6300M 24p SFP+ 1G/10G 4p SFP56 50G TAA Switch (SOG03A)	HPE Aruba Networking CX 6300M 24p SFP+ LRM support and 2p 50G and 2p 25G MACSec Switch (R8S92A)	HPE Aruba Networking CX 6300M 24p Smart Rate 1G/2.5G/5G Class6 PoE 4p SFP56 50G TAA Switch (SOG05A)
Differentiator	Non-PoE TAA certified	Non-PoE	Class 4 PoE/PoE+ TAA certified
Power consumption	Idle: 51W 100% Traffic Rate: 85W	With JL086A PSU: Idle: 60W 100% Traffic Rate: 76W With JL087A PSU: Idle: 59W 100% Traffic Rate: 74W With JL670A PSU: Idle: 62W 100% Traffic Rate: 81W	With JL086A PSU: Idle: 93W 100% Traffic Rate: 137W With JL087A PSU: Idle: 91W 100% Traffic Rate: 131W With JL670A PSU: Idle: 98W 100% Traffic Rate: 139W
Input voltage	JL085A PSU: 100V–240V	JL670A PSU: 110V–120V/208V–240V JL086A PSU: 100V–240V JL087A PSU: 110V–240V	JL670A PSU: 110V–120V/208V–240V JL086A PSU: 100V–240V JL087A PSU: 110V–240V
Ports	24 x 1G/10G SFP+ ports 4 x 1G/10G/25G/50G [4] SFP ports 1 x USB-C console port 1 x USB Type-A host port 1 x OOBM port	24 x 10/100/1000 BaseT PoE+ ports supporting up to 30W per port 4 x 1G/10G/25G/50G [4] SFP ports Supports PoE standards IEEE 802.3af, 802.3at 1 x USB-C console port 1 x USB Type-A host port 1 x OOBM port	24 x HPE Smart Rate 100 M [5]/1G/2.5G/5G BaseT Class 6 PoE ports supporting up to 60W per port 4 x 1G/10G/25G/50G [4] SFP ports Supports PoE standards IEEE 802.3af, 802.3at and 802.3bt (up to 60W) 1 x USB-C console port 1 x USB Type-A host port 1 x OOBM port
Latency	1 Gbps: 2.28 s 10 Gbps: 1.46 s 25 Gbps: 1.90 s 50 Gbps: 3.49 s	1 Gbps: 4.24 s 10 Gbps: 1.50 s 25 Gbps: 2.91 s 50 Gbps: 3.49 s	1 Gbps: 4.24 s 10 Gbps: 1.50 s 25 Gbps: 2.91 s 50 Gbps: 3.49 s
Switching capacity	880 Gbps	448 Gbps	640 Gbps
Stacking capabilities	Up to 10-members per stack. Note: CX 6300L switches only stack with other CX 6300L switches	Up to 10-members per stack. Note: CX 6300L switches only stack with other CX 6300L switches	Up to 10-members per stack. Note: CX 6300L switches only stack with other CX 6300L switches
Throughput	654 Mpps	334 Mpps	476 Mpps
Memory and processor	CPU: Dual-core Arm® Cortex-A9 @ 1.8GHz Memory: 8 GB DDR4, 32 GB eMMC Flash: 8 MB, 16 MB, or 32 MB, depending on model and configuration	Quad Core Arm Cortex™ A72 @ 1.8GHz, 8 GB DDR4, 32 GB eMMC 16 MB Shared Packet Buffer Memory	CPU: Dual-core Arm® Cortex-A9 @ 1.8GHz Memory: 8 GB DDR4, 32 GB eMMC Flash: 8 MB, 16 MB, or 32 MB, depending on model and configuration
Power supply	2 fieldreplaceable, hotswappable power supply slots 1 minimum power supply required (ordered separately). Supports JL085A PSU.	2 field-replaceable, hot-swappable power supply slots 1 minimum power supply required (ordered separately) Supported PSUs JL085A and JL757A.	2 fieldreplaceable, hotswappable power supply slots 1 minimum power supply required (ordered separately). Supported PSUs JL086A, JL087A and JL670A.
PoE capability		Maximum PoE power: 720W	Maximum PoE power: 1440W

	HPE Aruba Networking CX 6300M 24p SFP+ 1G/10G 4p SFP56 50G TAA Switch (SOG03A)	HPE Aruba Networking CX 6300M 24p SFP+ LRM support and 2p 50G and 2p 25G MACSec Switch (R8S92A)	HPE Aruba Networking CX 6300M 24p Smart Rate 1G/2.5G/5G Class6 PoE 4p SFP56 50G TAA Switch (SOG05A)
Management features	Management flexibility with support for HPE Aruba Networking Central, easy-to-use Web GUI, CLI, and HPE Aruba Networking Switch Multi-Edit Software	Management flexibility with support for HPE Aruba Networking Central, easy-to-use Web GUI, CLI, and HPE Aruba Networking Switch Multi-Edit Software	Management flexibility with support for HPE Aruba Networking Central, easy-to-use Web GUI, CLI, and HPE Aruba Networking Switch Multi-Edit Software
Operating temperature	32°F to 113°F (0°C to 45°C) up to 5000 ft. Derate 1°C for every 1000 ft from 5000 ft to 10000 ft. Can support excursion to 131°F (55°C) for short periods of time [3]. Operating temperature is reduced to 32°F (0°C) to 104°F (40°C) up to 5000 ft when 10 G SFP+ LR or ER transceivers are installed.	32°F to 113°F (0°C to 45°C) up to 5000 ft. Derate 1°C for every 1000 ft from 5000 ft to 10000 ft. Can support excursion to 131°F (55°C) for short periods of time [3]. 55°C excursion not supported when 10 G LRM/LR/ER inserted. When 10 G BT and 10 G LRM/LR/ER transceivers are installed together, fan redundancy is only supported up to 104°F (40°C) 5000 ft.	32°F to 113°F (0°C to 45°C) up to 5000 ft. Derate 1°C for every 1000 ft from 5000 ft to 10000 ft. Can support excursion to 131°F (55°C) for short periods of time [3]. Requires two fan trays to support excursion.
Warranty	Limited lifetime warranty. See warranty details.	Limited lifetime warranty. See warranty details.	Limited lifetime warranty. See warranty details.

	HPE Aruba Networking CX 6300M 24p Smart Rate 1G/2.5G/5G/10G Class6 PoE 2p 50G 2p 25G Switch (R8S89A)	HPE Aruba Networking CX 6300M 32p 1G 16p SmtRt 5G Class8 PoE 2p SFP56 50G 2p SFP28 25G MACsec Switch (S4P41A)	HPE Aruba Networking CX 6300M 32p 1G 16p SmtRt 5G Class8 PoE 2p SFP56 50G 2p SFP28 25G MACsec TAA Sw (S4P45A)
Differentiator	Class 4 PoE/PoE+	Class 4 PoE/PoE+	Class 4 PoE/PoE+ TAA certified
Power consumption	With JL086A PSU: Idle: 93W 100% Traffic Rate: 137W With JL087A PSU: Idle: 91W 100% Traffic Rate: 131W With JL670A PSU: Idle: 98W 100% Traffic Rate: 139W	With JL670A PSU: Idle: 103W 100% Traffic Rate: 134W With JL758A PSU: Idle: 111W 100% Traffic Rate: 135W	With JL086A PSU: Idle: 60W 100% Traffic Rate: 76W With JL087A PSU: Idle: 59W 100% Traffic Rate: 74W With JL670A PSU: Idle: 62W 100% Traffic Rate: 81W
Input voltage	JL670A PSU: 110V–120V/208V–240V JL086A PSU: 100V–240V JL087A PSU: 110V–240V	JL670A PSU: 110V–120V/200V/208V–240V; AC input JL086A PSU: 100V–240V; AC input JL087A PSU: 110V–240V; AC input JL758A PSU: 36–72V; DC input	JL670A PSU: 110V–120V/208V–240V JL086A PSU: 100V–240V JL087A PSU: 110V–240V
Ports	24 x HPE Smart Rate 100 M [5]/1G/2.5G/5G BaseT ports Class 6 PoE ports supporting up to 60W per port 4 x 1G/10G/25G/50G [4] SFP ports Supports PoE standards IEEE 802.3af, 802.3at and 802.3bt (up to 60W) 1 x USB-C console port 1 x USB Type-A host port 1 x OOBM port	32 x 10/100/1000M and 16 x HPE Smart Rate 1/2.5/5G BaseT ports (configuration can be changed to 8 x HPE Smart Rate 10 G BaseT ports) with Class 8 PoE supporting up to 90W per port 2 x 10G/25G/50G [4] SFP ports 2 x 10G/25G SFP ports (MACsec) Supports PoE standards IEEE 802.3af, 802.3at and 802.3bt (up to 90W) 1 x USB-C console port 1 x USB Type-A host port 1 x OOBM port 1 x RJ-45 console Port 1 x Bluetooth dongle to be used with CX Mobile App	24 x 10/100/1000 BaseT PoE+ ports supporting up to 30W per port 4 x 1G/10G/25G/50G [4] SFP ports Supports PoE standards IEEE 802.3af, 802.3at 1 x USB-C console port 1 x USB Type-A host port 1 x OOBM port
Latency	1 Gbps: 4.24 s 10 Gbps: 1.50 s 25 Gbps: 2.91 s 50 Gbps: 3.49 s	Less than 5 μs 1 Gbps: 3.6 μs	1 Gbps: 2.28 s 10 Gbps: 1.46 s 25 Gbps: 1.90 s 50 Gbps: 3.49 s
Switching capacity	640 Gbps	524 Gbps	448 Gbps
Stacking capabilities	Up to 10-members per stack. Note: CX 6300L switches only stack with other CX 6300L switches	Up to 10-members per stack. Note: CX 6300L switches only stack with other CX 6300L switches	Up to 10-members per stack. Note: CX 6300L switches only stack with other CX 6300L switches
Throughput	476 Mpps	390 Mpps	334 Mpps
Memory and processor	Quad Core Arm Cortex™ A72 @ 1.8GHz, 8 GB DDR4, 32 GB eMMC 16 MB Shared Packet Buffer Memory	CPU: Dual-core Arm® Cortex-A9 @ 1.8GHz Memory: 8 GB DDR4, 32 GB eMMC Flash: 8 MB, 16 MB, or 32 MB, depending on model and configuration	CPU: Dual-core Arm® Cortex-A9 @ 1.8GHz Memory: 8 GB DDR4, 32 GB eMMC Flash: 8 MB, 16 MB, or 32 MB, depending on model and configuration

	HPE Aruba Networking CX 6300M 24p Smart Rate 1G/2.5G/5G/10G Class6 PoE 2p 50G 2p 25G Switch (R8S89A)	HPE Aruba Networking CX 6300M 32p 1G 16p SmtRt 5G Class8 PoE 2p SFP56 50G 2p SFP28 25G MACsec Switch (S4P41A)	HPE Aruba Networking CX 6300M 32p 1G 16p SmtRt 5G Class8 PoE 2p SFP56 50G 2p SFP28 25G MACsec TAA Sw (S4P45A)
Power supply	2 fieldreplaceable, hotswappable power supply slots 1 minimum power supply required (ordered separately). Supported PSUs JL086A, JL087A and JL670A.	2 field-replaceable, hot-swappable power supply slots 1 minimum power supply required (ordered separately). Supported PSUs JL086A, JL087A, JL670A and JL758A.	2 fieldreplaceable, hotswappable power supply slots 1 minimum power supply required (ordered separately). Supported PSUs JL086A, JL087A and JL670A.
PoE capability	Maximum PoE power: 1440W	Maximum PoE power: 2880W	Maximum PoE power: 720W
Management features	Management flexibility with support for HPE Aruba Networking Central, easy-to-use Web GUI, CLI, and HPE Aruba Networking Switch Multi-Edit Software	Management flexibility with support for HPE Aruba Networking Central, easy-to-use Web GUI, CLI, and HPE Aruba Networking Switch Multi-Edit Software	Management flexibility with support for HPE Aruba Networking Central, easy-to-use Web GUI, CLI, and HPE Aruba Networking Switch Multi-Edit Software
Operating temperature	32°F to 113°F (0°C to 45°C) up to 5000 ft. Derate 1°C for every 1000 ft from 5000 ft to 10000 ft. Can support excursion to 131°F (55°C) for short periods of time [3].	32°F to 113°F (0°C to 45°C) up to 5000 ft. Derate 1°C for every 1000 ft from 5000 ft to 10000 ft. Can support excursion to 131°F (55°C) for short periods of time [3].	32°F to 113°F (0°C to 45°C) up to 5000 ft. Derate 1°C for every 1000 ft from 5000 ft to 10000 ft. Can support excursion to 131°F (55°C) for short periods of time [3].
Warranty	Limited lifetime warranty. See warranty details.	Limited lifetime warranty. See warranty details.	Limited lifetime warranty. See warranty details.

	HPE Aruba Networking CX 6300M 32p SmtRt 5G 8p SFP+ 10G LRM 2p SFP56 50G 2p SFP28 25G MACsec TAA Sw (S4P46A)	HPE Aruba Networking CX 6300M 32p SmtRt 5G CL8 8p SFP+ 10G LRM 2p SFP56 50G 2p SFP28 25G MACsec Sw (S4P42A)	HPE Aruba Networking CX 6300M 48-port 1GbE and 4-port SFP56 Switch (JL663A)
Differentiator	Non-PoE TAA certified	Non-PoE	Non-PoE
Power consumption	Idle: 56W 100% Traffic Rate: 75W	With JL670A PSU: Idle: 106W 100% Traffic Rate: 159W With JL758A PSU: Idle: 118W 100% Traffic Rate: 156W	Idle: 56W 100% Traffic Rate: 75W
Input voltage	JL085A PSU: 100V–240V	JL670A PSU: 110V–120V/200V/208V–240V; AC input JL086A PSU: 100V–240V; AC input JL087A PSU: 110V–240V; AC input JL758A PSU: 36–72V; DC input	JL085A PSU: 100V–240V
Ports	48 x 10/100/1000 BaseT ports 4 x 1G/10G/25G/50G [4] SFP ports 1 x USB-C console port 1 x USB Type-A host port 1 x OOBM port	32 x HPE Smart Rate 1G/2.5G/5G Base-T (configuration can be changed to 16 x HPE Smart Rate 1G/2.5G/5G Base-T and 8 x HPE Smart Rate 1G/2.5G/5G/10G Base-T ports) Class 8 PoE ports supporting up to 90W POE per port and 8 x 1G/10G SFP+ (LRM) ports 2 x 10G/25G/50G [4] SFP ports 2 x 10G/25G SFP ports (MACsec) Supports PoE standards IEEE 802.3af, 802.3at and 802.3bt (up to 90W) 1 x USB-C console port 1 x USB Type-A host port 1 x OOBM port 1 x RJ-45 console Port 1 x Bluetooth dongle to be used with CX Mobile App	48 x 10/100/1000 BaseT ports 4 x 1G/10G/25G/50G [4] SFP ports 1 x USB-C console port 1 x USB Type-A host port 1 x OOBM port
Latency	1 Gbps: 2.28 s 10 Gbps: 1.46 s 25 Gbps: 1.90 s 50 Gbps: 3.49 s	Less than 5 μs 10 Gbps LRM: 2.3 μs 10 Gbps dual mode ports: 5.5 μs 25 Gbps: 3.5 μs	1 Gbps: 2.28 s 10 Gbps: 1.46 s 25 Gbps: 1.90 s 50 Gbps: 3.49 s
Switching capacity	496 Gbps	780 Gbps	496 Gbps
Stacking capabilities	Up to 10-members per stack. Note: CX 6300L switches only stack with other CX 6300L switches	Up to 10-members per stack. Note: CX 6300L switches only stack with other CX 6300L switches	Up to 10-members per stack. Note: CX 6300L switches only stack with other CX 6300L switches
Throughput	369 Mpps	580 Mpps	369 Mpps

	HPE Aruba Networking CX 6300M 32p SmtRt 5G 8p SFP+ 10G LRM 2p SFP56 50G 2p SFP28 25G MACsec TAA Sw (S4P46A)	HPE Aruba Networking CX 6300M 32p SmtRt 5G CL8 8p SFP+ 10G LRM 2p SFP56 50G 2p SFP28 25G MACsec Sw (S4P42A)	HPE Aruba Networking CX 6300M 48-port 1GbE and 4-port SFP56 Switch (JL663A)
Memory and processor	CPU: Dual-core Arm® Cortex-A9 @ 1.8GHz Memory: 8 GB DDR4, 32 GB eMMC Flash: 8 MB, 16 MB, or 32 MB, depending on model and configuration	CPU: Dual-core Arm® Cortex-A9 @ 1.8GHz Memory: 8 GB DDR4, 32 GB eMMC Flash: 8 MB, 16 MB, or 32 MB, depending on model and configuration	CPU: Dual-core Arm® Cortex-A9 @ 1.8GHz Memory: 8 GB DDR4, 32 GB eMMC Flash: 8 MB, 16 MB, or 32 MB, depending on model and configuration
Power supply	2 fieldreplaceable, hotswappable power supply slots 1 minimum power supply required (ordered separately). Supports JL085A PSU.	2 field-replaceable, hot-swappable power supply slots 1 minimum power supply required (ordered separately). Supported PSUs JL086A, JL087A, JL670A and JL758A.	2 fieldreplaceable, hotswappable power supply slots 1 minimum power supply required (ordered separately). Supports JL085A PSU.
PoE capability	Maximum PoE power: 2880W	Maximum PoE power: 2880W	
Management features	Management flexibility with support for HPE Aruba Networking Central, easy-to-use Web GUI, CLI, and HPE Aruba Networking Switch Multi-Edit Software	Management flexibility with support for HPE Aruba Networking Central, easy-to-use Web GUI, CLI, and HPE Aruba Networking Switch Multi-Edit Software	Management flexibility with support for HPE Aruba Networking Central, easy-to-use Web GUI, CLI, and HPE Aruba Networking Switch Multi-Edit Software
Operating temperature	32°F to 113°F (0°C to 45°C) up to 5000 ft. Derate 1°C for every 1000 ft from 5000 ft to 10000 ft. Can support excursion to 131°F (55°C) for short periods of time [3].	32°F to 113°F (0°C to 45°C) up to 5000 ft. Derate 1°C for every 1000 ft from 5000 ft to 10000 ft. Can support excursion to 131°F (55°C) for short periods of time [3].	32°F to 113°F (0°C to 45°C) up to 5000 ft. Derate 1°C for every 1000 ft from 5000 ft to 10000 ft. Can support excursion to 131°F (55°C) for short periods of time [3].
Warranty	Limited lifetime warranty. See warranty details.	Limited lifetime warranty. See warranty details.	Limited lifetime warranty. See warranty details.

	HPE Aruba Networking CX 6300M 48-port 1GbE Class 4 PoE and 4-port SFP56 Switch (JL661A)	HPE Aruba Networking CX 6300M 48-port HPE Smart Rate 1/2.5/5GbE Class 6 PoE and 4-port SFP56 Switch (JL659A)	HPE Aruba Networking CX 6300M 48G Power-to-Port Airflow 2 Fans 1 Power Supply Unit Bundle (R9F63A)
Differentiator	Class 4 PoE/PoE+	Class 4 PoE/PoE+	Non-PoE
Power consumption	With JL086A PSU: Idle: 70W 100% Traffic Rate: 90W With JL087A PSU: Idle: 71W 100% Traffic Rate: 88W With JL670A PSU: Idle: 73W 100% Traffic Rate: 96W	With JL086A PSU: Idle: 133W 100% Traffic Rate: 199W With JL087A PSU: Idle: 138W 100% Traffic Rate: 193W With JL670A PSU: Idle: 140W 100% Traffic Rate: 201W	Idle: 56W 100% Traffic Rate: 75W
Input voltage	JL670A PSU: 110V–120V/208V–240V JL086A PSU: 100V–240V JL087A PSU: 110V–240V	JL670A PSU: 110V–120V/208V–240V JL086A PSU: 100V–240V JL087A PSU: 110V–240V	JL760A PSU: 100V–240V
Ports	48 x 10/100/1000 BaseT PoE+ ports supporting up to 30W per port 4 x 1G/10G/25G/50G [4] SFP ports Supports PoE standards IEEE 802.3af, 802.3at 1 x USB-C console port 1 x USB Type-A host port 1 x OOBM port	48 x HPE Smart Rate 100 M [5]/1G/2.5G/5G BaseT Class 6 PoE ports supporting up to 60W per port 4 x 1G/10G/25G/50G [4] SFP ports Supports PoE standards IEEE 802.3af, 802.3at and 802.3bt (up to 60W) 1 x USB-C console port 1 x USB Type-A host port 1 x OOBM port	48 x 10/100/1000 BaseT ports 4 x 1G/10G/25G/50G [4] SFP ports 1 x USB-C console port 1 x USB Type-A host port 1 x OOBM port
Latency	1 Gbps: 2.28 s 10 Gbps: 1.46 s 25 Gbps: 1.90 s 50 Gbps: 3.49 s	1 Gbps: 2.28 s 10 Gbps: 1.46 s 25 Gbps: 1.90 s 50 Gbps: 3.49 s	1 Gbps: 2.28 s 10 Gbps: 1.46 s 25 Gbps: 1.90 s 50 Gbps: 3.49 s
Switching capacity	496 Gbps	880 Gbps	496 Gbps
Stacking capabilities	Up to 10-members per stack. Note: CX 6300L switches only stack with other CX 6300L switches	Up to 10-members per stack. Note: CX 6300L switches only stack with other CX 6300L switches	Up to 10-members per stack. Note: CX 6300L switches only stack with other CX 6300L switches
Throughput	369 Mpps	654 Mpps	369 Mpps
Memory and processor	CPU: Dual-core Arm® Cortex-A9 @ 1.8GHz Memory: 8 GB DDR4, 32 GB eMMC Flash: 8 MB, 16 MB, or 32 MB, depending on model and configuration	CPU: Dual-core Arm® Cortex-A9 @ 1.8GHz Memory: 8 GB DDR4, 32 GB eMMC Flash: 8 MB, 16 MB, or 32 MB, depending on model and configuration	CPU: Dual-core Arm® Cortex-A9 @ 1.8GHz Memory: 8 GB DDR4, 32 GB eMMC Flash: 8 MB, 16 MB, or 32 MB, depending on model and configuration
Power supply	2 fieldreplaceable, hotswappable power supply slots 1 minimum power supply required (ordered separately). Supported PSUs JL086A, JL087A and JL670A.	2 fieldreplaceable, hotswappable power supply slots 1 minimum power supply required (ordered separately). Supported PSUs JL086A, JL087A and JL670A.	2 fieldreplaceable, hotswappable power supply slots
PoE capability	Maximum PoE power: 1440W	Maximum PoE power: 2880W	

	HPE Aruba Networking CX 6300M 48-port 1GbE Class 4 PoE and 4-port SFP56 Switch (JL661A)	HPE Aruba Networking CX 6300M 48-port HPE Smart Rate 1/2.5/5GbE Class 6 PoE and 4-port SFP56 Switch (JL659A)	HPE Aruba Networking CX 6300M 48G Power-to-Port Airflow 2 Fans 1 Power Supply Unit Bundle (R9F63A)
Management features	Management flexibility with support for HPE Aruba Networking Central, easy-to-use Web GUI, CLI, and HPE Aruba Networking Switch Multi-Edit Software	Management flexibility with support for HPE Aruba Networking Central, easy-to-use Web GUI, CLI, and HPE Aruba Networking Switch Multi-Edit Software	Management flexibility with support for HPE Aruba Networking Central, easy-to-use Web GUI, CLI, and HPE Aruba Networking Switch Multi-Edit Software
Operating temperature	32°F to 113°F (0°C to 45°C) up to 5000 ft. Derate 1°C for every 1000 ft from 5000 ft to 10000 ft. Can support excursion to 131°F (55°C) for short periods of time [3].	32°F to 113°F (0°C to 45°C) up to 5000 ft. Derate 1°C for every 1000 ft from 5000 ft to 10000 ft.	32°F to 113°F (0°C to 45°C) up to 5000 ft. Derate 1°C for every 1000 ft from 5000 ft to 10000 ft. Can support excursion to 131°F (55°C) for short periods of time [3].
Warranty	Limited lifetime warranty. See warranty details.	Limited lifetime warranty. See warranty details.	Limited lifetime warranty. See warranty details.

	HPE Aruba Networking CX 6300M 48p 10M/100M/1G 4p SFP56 50G Power-to-Port 2xFan PSU TAA Bundle (SOG02A)	HPE Aruba Networking CX 6300M 48p 10M/100M/1G 4p SFP56 50G TAA Switch (SOG00A)	HPE Aruba Networking CX 6300M 48p 10M/100M/1G Class4 PoE 4p SFP56 50G TAA Switch (SOG06A)
Differentiator	Non-PoE TAA certified	Non-PoE TAA certified	Class 4 PoE/PoE+ TAA certified
Power consumption	Idle: 56W 100% Traffic Rate: 75W	Idle: 56W 100% Traffic Rate: 75W	With JL086A PSU: Idle: 70W 100% Traffic Rate: 90W With JL087A PSU: Idle: 71W 100% Traffic Rate: 88W With JL670A PSU: Idle: 73W 100% Traffic Rate: 96W
Input voltage	JL760A PSU: 100V–240V	JL085A PSU: 100V/240V	JL670A PSU: 110V–120V/208V–240V JL086A PSU: 100V–240V JL087A PSU: 110V–240V
Ports	48 x 10/100/1000 BaseT ports 4 x 1G/10G/25G/50G [4] SFP ports 1 x USB-C console port 1 x USB Type-A host port 1 x OOBM port	48 x 10/100/1000 BaseT ports 4 x 1G/10G/25G/50G [4] SFP ports 1 x USB-C console port 1 x USB Type-A host port 1 x OOBM port	48 x 10/100/1000 BaseT PoE+ ports supporting up to 30W per port 4 x 1G/10G/25G/50G [4] SFP ports Supports PoE standards IEEE 802.3af, 802.3at 1 x USB-C console port 1 x USB Type-A host port 1 x OOBM port
Latency	1 Gbps: 2.28 s 10 Gbps: 1.46 s 25 Gbps: 1.90 s 50 Gbps: 3.49 s	1 Gbps: 2.28 s 10 Gbps: 1.46 s 25 Gbps: 1.90 s 50 Gbps: 3.49 s	1 Gbps: 2.28 s 10 Gbps: 1.46 s 25 Gbps: 1.90 s 50 Gbps: 3.49 s
Switching capacity	496 Gbps	496 Gbps	496 Gbps
Stacking capabilities	Up to 10-members per stack. Note: CX 6300L switches only stack with other CX 6300L switches	Up to 10-members per stack. Note: CX 6300L switches only stack with other CX 6300L switches	Up to 10-members per stack. Note: CX 6300L switches only stack with other CX 6300L switches
Throughput	369 Mpps	369 Mpps	369 Mpps
Memory and processor	CPU: Dual-core Arm® Cortex-A9 @ 1.8GHz Memory: 8 GB DDR4, 32 GB eMMC Flash: 8 MB, 16 MB, or 32 MB, depending on model and configuration	CPU: Dual-core Arm® Cortex-A9 @ 1.8GHz Memory: 8 GB DDR4, 32 GB eMMC Flash: 8 MB, 16 MB, or 32 MB, depending on model and configuration	CPU: Dual-core Arm® Cortex-A9 @ 1.8GHz Memory: 8 GB DDR4, 32 GB eMMC Flash: 8 MB, 16 MB, or 32 MB, depending on model and configuration
Power supply	2 Fieldreplaceable, hotswappable powersupply slots and comes with one power-to-port powersupply preinstalled. Additional power-to-port powersupply can be ordered separately. Supports JL760A power-to-port powersupply only.	2 fieldreplaceable, hotswappable power supply slots 1 minimum power supply required (ordered separately). Supports JL085A PSU.	2 fieldreplaceable, hotswappable power supply slots 1 minimum power supply required (ordered separately). Supported PSUs JL086A, JL087A and JL670A.
PoE capability		##BLAN##BLANK##K##	Maximum PoE power: 1440W

	HPE Aruba Networking CX 6300M 48p 10M/100M/1G 4p SFP56 50G Power-to-Port 2xFan PSU TAA Bundle (SOG02A)	HPE Aruba Networking CX 6300M 48p 10M/100M/1G 4p SFP56 50G TAA Switch (SOG00A)	HPE Aruba Networking CX 6300M 48p 10M/100M/1G Class4 PoE 4p SFP56 50G TAA Switch (SOG06A)
Management features	Management flexibility with support for HPE Aruba Networking Central, easy-to-use Web GUI, CLI, and HPE Aruba Networking Switch Multi-Edit Software	Management flexibility with support for HPE Aruba Networking Central, easy-to-use Web GUI, CLI, and HPE Aruba Networking Switch Multi-Edit Software	Management flexibility with support for HPE Aruba Networking Central, easy-to-use Web GUI, CLI, and HPE Aruba Networking Switch Multi-Edit Software
Operating temperature	32°F to 113°F (0°C to 45°C) up to 5000 ft. Derate 1°C for every 1000 ft from 5000 ft to 10000 ft.	32°F to 113°F (0°C to 45°C) up to 5000 ft. Derate 1°C for every 1000 ft from 5000 ft to 10000 ft. Can support excursion to 131°F (55°C) for short periods of time [3].	32°F to 113°F (0°C to 45°C) up to 5000 ft. Derate 1°C for every 1000 ft from 5000 ft to 10000 ft. Can support excursion to 131°F (55°C) for short periods of time [3].
Warranty	Limited lifetime warranty. See warranty details.	Limited lifetime warranty. See warranty details.	Limited lifetime warranty. See warranty details.

	HPE Aruba Networking CX 6300M 48p 1GbE 4p SFP56 Power-to-Port 2 Fan Trays 1 PSU Bundle (JL762A)	HPE Aruba Networking CX 6300M 48p HPE Smart Rate 1G/2.5G/5G Class8 PoE 2p 50G 2p 25G Switch (R8S90A)	HPE Aruba Networking CX 6300M 48p SFP 1G 2p SFP56 50G 2p SFP28 25G MACsec Switch (S4P43A)
Differentiator	Non-PoE	Class 4 PoE/PoE+	Non-PoE
Power consumption	Idle: 56W 100% Traffic Rate: 75W	With JL086A PSU: Idle: 133W 100% Traffic Rate: 199W With JL087A PSU: Idle: 138W 100% Traffic Rate: 193W With JL670A PSU: Idle: 140W 100% Traffic Rate: 201W	With JL085A PSU: Idle: 67W 100% Traffic Rate: 127W With JL757A PSU: Idle: 61W 100% Traffic Rate: 123W
Input voltage	JL760A PSU: 100V–240V	JL670A PSU: 110V–120V/208V–240V JL086A PSU: 100V–240V JL087A PSU: 110V–240V	JL085A PSU: 100V–240V; AC input JL757A PSU: 36–72V; DC input
Ports	48 x 10/100/1000 BaseT ports 4 x 1G/10G/25G/50G [4] SFP ports 1 x USB-C console port 1 x USB Type-A host port 1 x OOBM port	48 x HPE Smart Rate 100 M [5]/1G/2.5G/5G BaseT Class 6 PoE ports supporting up to 60W per port 4 x 1G/10G/25G/50G [4] SFP ports Supports PoE standards IEEE 802.3af, 802.3at and 802.3bt (up to 60W) 1 x USB-C console port 1 x USB Type-A host port 1 x OOBM port	48 x 1G SFP ports 2 x 10G/25G/50G [4] SFP ports 2 x 10G/25G SFP ports (MACsec) 1 x USB-C console port 1 x USB Type-A host port 1 x OOBM port
Latency	1 Gbps: 2.28 s 10 Gbps: 1.46 s 25 Gbps: 1.90 s 50 Gbps: 3.49 s	1 Gbps: 4.24 s 10 Gbps: 1.50 s 25 Gbps: 2.91 s 50 Gbps: 3.49 s	1 Gbps: 3.4 μs 50 Gbps: 2.1 μs
Switching capacity	496 Gbps	880 Gbps	396 Gbps
Stacking capabilities	Up to 10-members per stack. Note: CX 6300L switches only stack with other CX 6300L switches	Up to 10-members per stack. Note: CX 6300L switches only stack with other CX 6300L switches	Up to 10-members per stack. Note: CX 6300L switches only stack with other CX 6300L switches
Throughput	369 Mpps	654 Mpps	295 Mpps
Memory and processor	CPU: Dual-core Arm® Cortex-A9 @ 1.8GHz Memory: 8 GB DDR4, 32 GB eMMC Flash: 8 MB, 16 MB, or 32 MB, depending on model and configuration	Quad Core Arm Cortex™ A72 @ 1.8GHz, 8 GB DDR4, 32 GB eMMC 16 MB Shared Packet Buffer Memory	CPU: Dual-core Arm® Cortex-A9 @ 1.8GHz Memory: 8 GB DDR4, 32 GB eMMC Flash: 8 MB, 16 MB, or 32 MB, depending on model and configuration
Power supply	2 Fieldreplaceable, hotswappable powersupply slots and comes with one power-to-port powersupply preinstalled. Additional power-to-port powersupply can be ordered separately. Supports JL760A power-to-port powersupply only.	2 fieldreplaceable, hotswappable power supply slots 1 minimum power supply required (ordered separately). Supported PSUs JL086A, JL087A and JL670A.	2 field-replaceable, hot-swappable power supply slots 1 minimum power supply required (ordered separately). Supported PSUs JL085A and JL757A.
PoE capability		Maximum PoE power: 2880W	

	HPE Aruba Networking CX 6300M 48p 1GbE 4p SFP56 Power-to-Port 2 Fan Trays 1 PSU Bundle (JL762A)	HPE Aruba Networking CX 6300M 48p HPE Smart Rate 1G/2.5G/5G Class8 PoE 2p 50G 2p 25G Switch (R8S90A)	HPE Aruba Networking CX 6300M 48p SFP 1G 2p SFP56 50G 2p SFP28 25G MACsec Switch (S4P43A)
Management features	Management flexibility with support for HPE Aruba Networking Central, easy-to-use Web GUI, CLI, and HPE Aruba Networking Switch Multi-Edit Software	Management flexibility with support for HPE Aruba Networking Central, easy-to-use Web GUI, CLI, and HPE Aruba Networking Switch Multi-Edit Software	Management flexibility with support for HPE Aruba Networking Central, easy-to-use Web GUI, CLI, and HPE Aruba Networking Switch Multi-Edit Software
Operating temperature	32°F to 113°F (0°C to 45°C) up to 5000 ft. Derate 1°C for every 1000 ft from 5000 ft to 10000 ft.	32°F to 113°F (0°C to 45°C) up to 5000 ft. Derate 1°C for every 1000 ft from 5000 ft to 10000 ft. Can support excursion to 131°F (55°C) for short periods of time [3].	32°F to 113°F (0°C to 45°C) up to 5000 ft. Derate 1°C for every 1000 ft from 5000 ft to 10000 ft. Can support excursion to 131°F (55°C) for short periods of time [3].
Warranty	Limited lifetime warranty. See warranty details.	Limited lifetime warranty. See warranty details.	Limited lifetime warranty. See warranty details.

	HPE Aruba Networking CX 6300M 48p SFP 1G 2p SFP56 50G 2p SFP28 25G MACsec TAA Switch (S4P47A)	HPE Aruba Networking CX 6300M 48p Smart Rate 1G/2.5G/5G Class6 PoE 4p SFP56 50G TAA Switch (S0G04A)	HPE Aruba Networking CX 6300M 48p SR10 1G/2.5G/5G/10G PTP/AVB Class8 PoE and 4p 100G MACsec Switch (SOE91A)
Differentiator	Non-PoE TAA certified	Class 4 PoE/PoE+ TAA certified	Class 4 PoE/PoE+
Power consumption	Idle: 49W 100% Traffic Rate: 64W	With JL086A PSU: Idle: 133W 100% Traffic Rate: 199W With JL087A PSU: Idle: 138W 100% Traffic Rate: 193W With JL670A PSU: Idle: 140W 100% Traffic Rate: 201W	With single JL086A PSU: Idle: 207W 100% Traffic Rate: 283W With single JL087A PSU: Idle: 208W 100% Traffic Rate: 282W With single JL670A PSU: Idle: 211W 100% Traffic Rate: 283W
Input voltage	JL085A PSU: 100V–240V	JL670A PSU: 110V–120V/208V–240V JL086A PSU: 100V–240V JL087A PSU: 110V–240V	JL670A PSU: 110V–120V/200V/208V–240 V; AC input JL086A PSU: 100V–240V; AC input JL087A PSU: 110V–240V; AC input JL758A PSU: 36–72V; DC input
Ports	48x 1G SFP ports 2x 10G/25G/50G [4] SFP ports 2x 10G/25G SFP ports (MACsec) 1x USBC Console Port 1x OOBM port 1x USB Type A Host port	48 x HPE Smart Rate 100 M [5]/1G/2.5G/5G BaseT Class 6 PoE ports supporting up to 60W per port 4 x 1G/10G/25G/50G [4] SFP ports Supports PoE standards IEEE 802.3af, 802.3at and 802.3bt (up to 60W) 1 x USB-C console port 1 x USB Type-A host port 1 x OOBM port	48 x HPE Smart Rate 100 M [5]/1G/2.5G/5G/10G BaseT Class 8 PoE ports supporting up to 90W per port (MACsec) 4 x 10G/25G/40G/100G QSFP/QSFP28 ports (MACsec) Supports PoE standards IEEE 802.3af, 802.3at and 802.3bt (up to 90W) 1 x USB-C console port 1 x USB Type-A host port 1 x OOBM port 1 x RJ-45 console port
Latency	1 Gbps: 2.28 s 10 Gbps: 1.46 s 25 Gbps: 1.90 s 50 Gbps: 3.49 s	1 Gbps: 4.24 s 10 Gbps: 1.50 s 25 Gbps: 2.91 s 50 Gbps: 3.49 s	1 Gbps: 4.24 s 10 Gbps: 1.50 s 25 Gbps: 2.91 s 50 Gbps: 3.49 s
Switching capacity	448 Gbps	880 Gbps	1760 Gbps
Stacking capabilities	Up to 10-members per stack. Note: CX 6300L switches only stack with other CX 6300L switches	Up to 10-members per stack. Note: CX 6300L switches only stack with other CX 6300L switches	Up to 10-members per stack. Note: CX 6300L switches only stack with other CX 6300L switches
Throughput	334 Mpps	654 Mpps	1310 Mpps
Memory and processor	CPU: Dual-core Arm® Cortex-A9 @ 1.8GHz Memory: 8 GB DDR4, 32 GB eMMC Flash: 8 MB, 16 MB, or 32 MB, depending on model and configuration	CPU: Dual-core Arm® Cortex-A9 @ 1.8GHz Memory: 8 GB DDR4, 32 GB eMMC Flash: 8 MB, 16 MB, or 32 MB, depending on model and configuration	Quad Core Arm Cortex™ A72 @ 1.8GHz, 8 GB DDR4, 32 GB eMMC 32 MB Shared Packet Buffer Memory

	HPE Aruba Networking CX 6300M 48p SFP 1G 2p SFP56 50G 2p SFP28 25G MACsec TAA Switch (S4P47A)	HPE Aruba Networking CX 6300M 48p Smart Rate 1G/2.5G/5G Class6 PoE 4p SFP56 50G TAA Switch (S0G04A)	HPE Aruba Networking CX 6300M 48p SR10 1G/2.5G/5G/10G PTP/AVB Class8 PoE and 4p 100G MACsec Switch (SOE91A)
Power supply	2 fieldreplaceable, hotswappable power supply slots 1 minimum power supply required (ordered separately). Supports JL085A PSU.	2 fieldreplaceable, hotswappable power supply slots 1 minimum power supply required (ordered separately). Supported PSUs JL086A, JL087A and JL670A.	2 field-replaceable, hot-swappable power supply slots 1 minimum power supply required (ordered separately). Supported PSUs JL086A, JL087A, JL670A and JL758A.
PoE capability		Maximum PoE power: 2880W	Maximum PoE power: 2640W
Management features	Management flexibility with support for HPE Aruba Networking Central, easy-to-use Web GUI, CLI, and HPE Aruba Networking Switch Multi-Edit Software	Management flexibility with support for HPE Aruba Networking Central, easy-to-use Web GUI, CLI, and HPE Aruba Networking Switch Multi-Edit Software	Management flexibility with support for HPE Aruba Networking Central, easy-to-use Web GUI, CLI, and HPE Aruba Networking Switch Multi-Edit Software
Operating temperature	32°F to 113°F (0°C to 45°C) up to 5000 ft. Derate 1°C for every 1000 ft from 5000 ft to 10000 ft. Can support excursion to 131°F (55°C) for short periods of time [3].	32°F to 113°F (0°C to 45°C) up to 5000 ft. Derate 1°C for every 1000 ft from 5000 ft to 10000 ft.	32°F to 113°F (0°C to 45°C) up to 5000 ft. Derate 1°C for every 1000 ft from 5000 ft to 10000 ft. Can support excursion to 131°F (55°C) for short periods of time [3].
Warranty	Limited lifetime warranty. See warranty details.	Limited lifetime warranty. See warranty details.	Limited lifetime warranty. See warranty details.

Related Options

The following options are available for these series:

SKU	Description
Adapters	
S1H23A	HPE Aruba Networking CX Switch Bluetooth Adapter
Cables/Cable Kits	
S1J07A	HPE Aruba Networking 50G QSFP56 to SFP56 0.65m DAC Cable
S1J08A	HPE Aruba Networking 50G QSFP56 to SFP56 3m DAC Cable
R9J32A	HPE Aruba Networking USB-A reversible to USB-C PC-to-Switch 3m Cable
R9J33A	HPE Aruba Networking USB-C to USB-C PC-to-Switch 3m Cable
R9G48B	HPE Aruba Networking USBA-RJ45 PC-to-Switch PIN6TX-3RX 2.5m Cable
R8Z87A	HPE Aruba Networking USBA-RJ45 PIN3TX-6RX 2.5m Cable
Converters	
845970-B21	HPE QSFP28 to SFP28 Adapter
Fans/Fan Options	
R9F62A	HPE Aruba Networking CX 6300M Power-to-Port Airflow Fan Tray
JL761A	HPE Aruba Networking CX 6300M Power-to-Port Fan Tray
JL714A	HPE Aruba Networking X741 Port-to-Power Fan
JL669B	HPE Aruba Networking X751 Front to Back Fan Tray
HPE Aruba Networking Software	
R9G36AAE	HPE Aruba Networking NetEdit Single Node 1-year Subscription E-STU
JL639AAE	HPE Aruba Networking NetEdit Single Node 1yr Subscription E-STU
R9G37AAE	HPE Aruba Networking NetEdit Single Node 3-year Subscription E-STU
JL640AAE	HPE Aruba Networking NetEdit Single Node 3yr Subscription E-STU
Mounting Rack/Rail Options	
R9F57A	HPE Aruba Networking 1U Universal 4-post Rack Mount Kit
R9F60A	HPE Aruba Networking Universal 4-post Duct Kit
J9583B	HPE Aruba Networking X414 1U Universal 4-post Rack Mount Kit
JL716A	HPE Aruba Networking X544 Universal 4-post Duct Kit (Must order 4-post rack mount kit)
Networking Software	
R8D18AAE	HPE Aruba Networking Fabric Composer Device Management Service Tier 3 Switch 1y Subscription E-STU

R9G31AAE	HPE Aruba Networking Fabric Composer Device Management Service Tier 3 Switch 1y Subscription E-STU
R8D19AAE	HPE Aruba Networking Fabric Composer Device Management Service Tier 3 Switch 3y Subscription E-STU
R9G32AAE	HPE Aruba Networking Fabric Composer Device Management Service Tier 3 Switch 3y Subscription E-STU
R8D20AAE	HPE Aruba Networking Fabric Composer Device Management Service Tier 3 Switch 5y Subscription E-STU
R9G33AAE	HPE Aruba Networking Fabric Composer Device Management Service Tier 3 Switch 5y Subscription E-STU

Power Management Options

R9F61A	HPE Aruba Networking CX 6300M 12VDC 250W 100-240VAC Power-to-Port Airflow Power Supply Unit
JL757A	HPE Aruba Networking CX 6300M 250W 36-72VDC Input Non-PoE Power Supply
JL758A	HPE Aruba Networking CX 6300M 1050W 36-72VDC Input PoE Power Supply
JL085A	HPE Aruba Networking X371 12VDC 250W 100-240VAC Power Supply
JL760A	HPE Aruba Networking X371 12VDC 250W 100-240VAC Power-to-Port Power Supply
JL086A	HPE Aruba Networking X372 54VDC 680W 100-240VAC Power Supply
JL087A	HPE Aruba Networking X372 54VDC 1050W 110-240VAC Power Supply
JL670A	HPE Aruba Networking X372 54VDC 1600W 110-240VAC Power Supply

Private and Hybrid Cloud

R6V03AAE	HPE Aruba Networking Central On-Premises Switch Class3 Advanced 1-year Subscription E-STU
R6V04AAE	HPE Aruba Networking Central On-Premises Switch Class3 Advanced 3-year Subscription E-STU
R6V05AAE	HPE Aruba Networking Central On-Premises Switch Class3 Advanced 5-year Subscription E-STU
R6V06AAE	HPE Aruba Networking Central On-Premises Switch Class3 Advanced 7-year Subscription E-STU
R6V07AAE	HPE Aruba Networking Central On-Premises Switch Class3 Advanced 10-year Subscription E-STU
R3K02AAE	HPE Aruba Networking Central Switch Class3 Foundation 10-year Subscription E-STU
Q9Y78AAE	HPE Aruba Networking Central Switch Class-3 Foundation 1 year Subscription E-STU
Q9Y79AAE	HPE Aruba Networking Central Switch Class-3 Foundation 3 year Subscription E-STU
Q9Y80AAE	HPE Aruba Networking Central Switch Class-3 Foundation 5 year Subscription E-STU
Q9Y81AAE	HPE Aruba Networking Central Switch Class-3 Foundation 7 year Subscription E-STU
R6U83AAE	HPE Aruba Networking Central on Prem Switch Class-3 Foundation 1 year Subscription E-STU
R6U84AAE	HPE Aruba Networking Central on Prem Switch Class-3 Foundation 3 year Subscription E-STU
R6U85AAE	HPE Aruba Networking Central on Prem Switch Class-3 Foundation 5 year Subscription E-STU
R6U86AAE	HPE Aruba Networking Central on Prem Switch Class-3 Foundation 7 year Subscription E-STU
R6U87AAE	HPE Aruba Networking Central on Prem Switch Class-3 Foundation 10 year Subscription E-STU

Transceiver Options

J4860D	HPE Aruba Networking 1G SFP LC LH 70km SMF Transceiver
JL746A	HPE Aruba Networking 1G SFP LC LX 10km SMF TAA Transceiver

R9Q44A	HPE Aruba Networking 1G SFP LC LX 10km SMF TAA Transceiver
J4859D	HPE Aruba Networking 1G SFP LC LX 10km SMF Transceiver
JL745A	HPE Aruba Networking 1G SFP LC SX 500m MMF TAA Transceiver
R9Q43A	HPE Aruba Networking 1G SFP LC SX 500m MMF TAA Transceiver
R9F86A	HPE Aruba Networking 1G SFP LC SX 500m OM2 MMF Transceiver
J4858D	HPE Aruba Networking 1G SFP LC SX 500m OM2 MMF Transceiver
JL747B	HPE Aruba Networking 1G SFP RJ45 100m Cat5e TAA Transceiver
J8177E	HPE Aruba Networking 1G SFP RJ45 100m Cat5e Transceiver
JL747A	HPE Aruba Networking 1G SFP RJ45 T 100m Cat5e TAA Transceiver
R9Q45A	HPE Aruba Networking 1G SFP RJ45 T 100m Cat5e TAA Transceiver
R9F87A	HPE Aruba Networking 1G SFP RJ45 T 100m Cat5e Transceiver
S2P32A	HPE Aruba Networking 10G ER SFP+ LC 40km SMF C-Class Transceiver
S2P31A	HPE Aruba Networking 10G LR SFP+ LC 10km SMF C-Class Transceiver
J9153D	HPE Aruba Networking 10G SFP+ LC ER 40km SMF Transceiver
JL749A	HPE Aruba Networking 10G SFP+ LC LR 10km SMF TAA Transceiver
R9Q47A	HPE Aruba Networking 10G SFP+ LC LR 10km SMF TAA Transceiver
J9151E	HPE Aruba Networking 10G SFP+ LC LR 10km SMF Transceiver
J9152D	HPE Aruba Networking 10G SFP+ LC LRM 220m OM2 MMF Transceiver
JL748A	HPE Aruba Networking 10G SFP+ LC SR 300m MMF TAA Transceiver
R9Q46A	HPE Aruba Networking 10G SFP+ LC SR 300m MMF TAA Transceiver
R9F82A	HPE Aruba Networking 10G SFP+ LC SR 300m OM3 MMF Transceiver
J9150D	HPE Aruba Networking 10G SFP+ LC SR 300m OM3 MMF Transceiver
J9281D	HPE Aruba Networking 10G SFP+ to SFP+ 1m Direct Attach Copper Cable
R9F83A	HPE Aruba Networking 10G SFP+ to SFP+ 1m Direct Attach Copper Cable
R9F84A	HPE Aruba Networking 10G SFP+ to SFP+ 3m Direct Attach Copper Cable
J9283D	HPE Aruba Networking 10G SFP+ to SFP+ 3m Direct Attach Copper Cable
R9X54A	HPE Aruba Networking 10G SMF Simplex LC BiDi 40km-Downstream 1330/1270 Transceiver
R9X55A	HPE Aruba Networking 10G SMF Simplex LC BiDi 40km-Upstream 1270/1330 Transceiver
S2P30A	HPE Aruba Networking 10G SR SFP+ LC 400m OM4 MMF C-Class Transceiver
R9F85A	HPE Aruba Networking 10GBASE-T SFP+ RJ45 30m Cat6A Transceiver
JL563C	HPE Aruba Networking 10GBASE-T SFP+ RJ45 30m Cat6A Transceiver
S1C96A	HPE Aruba Networking 25G BiDi 10km-Downstream 1330/1270 Transceiver
S1C98A	HPE Aruba Networking 25G BiDi 10km-Upstream 1270/1330 Transceiver
SOV70A	HPE Aruba Networking 25G BiDi 40km-Downstream 1314/1289 Transceiver
SOV71A	HPE Aruba Networking 25G BiDi 40km-Upstream 1289/1314 Transceiver
SOV69A	HPE Aruba Networking 25G ER LC 40km SMF Transceiver

S2P34A	HPE Aruba Networking 25G LR SFP28 LC 10km SMF C-Class Transceiver
S2N63A	HPE Aruba Networking 25G LR SFP28 LC 10km SMF TAA Transceiver
JL486A	HPE Aruba Networking 25G SFP28 LC LR 10km SMF Transceiver
JL484A	HPE Aruba Networking 25G SFP28 LC SR 100m MMF Transceiver
R9F89A	HPE Aruba Networking 25G SFP28 LC SR 100m MMF Transceiver
JL485A	HPE Aruba Networking 25G SFP28 LC eSR 400m MMF Transceiver
R9F90A	HPE Aruba Networking 25G SFP28 LC eSR 400m MMF Transceiver
JL487A	HPE Aruba Networking 25G SFP28 to SFP28 0.65m Direct Attach Cable
R9F91A	HPE Aruba Networking 25G SFP28 to SFP28 0.65m Direct Attach Copper Cable
ROM44A	HPE Aruba Networking 25G SFP28 to SFP28 3m Active Optical Cable
JL488A	HPE Aruba Networking 25G SFP28 to SFP28 3m Direct Attach Copper Cable
R9F92A	HPE Aruba Networking 25G SFP28 to SFP28 3m Direct Attach Copper Cable
JL489A	HPE Aruba Networking 25G SFP28 to SFP28 5m Direct Attach Copper Cable
R9F93A	HPE Aruba Networking 25G SFP28 to SFP28 5m Direct Attach Copper Cable
ROM45A	HPE Aruba Networking 25G SFP28 to SFP28 7m Active Optical Cable
ROZ21A	HPE Aruba Networking 25G SFP28 to SFP28 15m Active Optical Cable
S2P33A	HPE Aruba Networking 25G SR SFP28 LC 100m MMF C-Class Transceiver
S5U19A	HPE Aruba Networking 25G eSR SFP28 LC 400m MMF TAA Transceiver
JL308A	HPE Aruba Networking 40G QSFP+ LC Bidirectional 150m MMF 2-strand Transceiver
Q9G82A	HPE Aruba Networking 40G QSFP+ LC ER4 40km SMF Transceiver
ROZ22A	HPE Aruba Networking 40G QSFP+ to QSFP+ 7m Active Optical Cable
ROZ23A	HPE Aruba Networking 40G QSFP+ to QSFP+ 15m Active Optical Cable
ROZ24A	HPE Aruba Networking 40G QSFP+ to QSFP+ 30m Active Optical Cable
S1C92A	HPE Aruba Networking 50G BiDi 10km-Downstream 1330/1270 Transceiver
S1C94A	HPE Aruba Networking 50G BiDi 10km-Upstream 1270/1330 Transceiver
SOV66A	HPE Aruba Networking 50G ER 40km SMF Transceiver
SOV65A	HPE Aruba Networking 50G LR 10km SMF Transceiver
ROM48A	HPE Aruba Networking 50G SFP56 LC SR 100m MMF Transceiver
R9G06A	HPE Aruba Networking 50G SFP56 to SFP56 0.65m Direct Attach Copper Cable
ROM46A	HPE Aruba Networking 50G SFP56 to SFP56 0.65m Direct Attach Copper Cable
R9G07A	HPE Aruba Networking 50G SFP56 to SFP56 3m Direct Attach Copper Cable
ROM47A	HPE Aruba Networking 50G SFP56 to SFP56 3m Direct Attach Copper Cable
SOV64A	HPE Aruba Networking 50G eSR 300m MMF Transceiver
ROZ30A	HPE Aruba Networking 100G QSFP28 LC CWDM4 2km SMF Transceiver
JL743A	HPE Aruba Networking 100G QSFP28 LC ER4L 40km SMF Transceiver
R9B63A	HPE Aruba Networking 100G QSFP28 LC FR1 SMF 2km Transceiver

JL310A	HPE Aruba Networking 100G QSFP28 LC LR4 10km SMF 2-strand Transceiver
JL309A	HPE Aruba Networking 100G QSFP28 MPO SR4 100m 12-fiber MPO OM3 MMF Transceiver
ROZ25A	HPE Aruba Networking 100G QSFP28 to QSFP28 1m Direct Attach Copper Cable
JL856A	HPE Aruba Networking 100G QSFP28 to QSFP28 2m Active Optical Cable
JL307A	HPE Aruba Networking 100G QSFP28 to QSFP28 3m Direct Attach Copper Cable
ROZ26A	HPE Aruba Networking 100G QSFP28 to QSFP28 5m Direct Attach Copper Cable
ROZ27A	HPE Aruba Networking 100G QSFP28 to QSFP28 7m Active Optical Cable
ROZ28A	HPE Aruba Networking 100G QSFP28 to QSFP28 15m Active Optical Cable
ROZ29A	HPE Aruba Networking 100G QSFP28 to QSFP28 30m Active Optical Cable
S4B44A	HPE Aruba Networking 100G SR1.2 QSFP28 LC 100m MMF Transceiver
S1C93A	HPE Aruba Networking 100G SR2 MPO QSFP28 100m MMF Transceiver
J9054D	HPE Aruba Networking 100M SFP LC FX 2km MMF Transceiver
R9F88A	HPE Aruba Networking 100M SFP LC FX 2km MMF Transceiver
JH232A	HPE Networking X142 40G QSFP+ LC LR4 SM Transceiver
JH231A	HPE Networking X142 40G QSFP+ MPO SR4 Transceiver
JH233A	HPE Networking X142 40G QSFP+ MPO eSR4 300M Transceiver
JH234A	HPE Networking X242 40G QSFP+ to QSFP+ 1m Direct Attach Copper Cable
JH235A	HPE Networking X242 40G QSFP+ to QSFP+ 3m Direct Attach Copper Cable
JH236A	HPE Networking X242 40G QSFP+ to QSFP+ 5m Direct Attach Copper Cable

HPE Aruba Networking Services

HPE Aruba Networking services simplify and accelerate the network technology lifecycle, enabling your network to scale with better predictability and cost-effectiveness. Whether you operate your own network and need to improve your IT efficiencies, or you want to offload some of the burden, we have the services you need to reach your goals.

Learn more about what HPE Services - Aruba Networking has to offer at: hpe.com/edge/services

Support Services

Our support portfolio provides the essential support elements as well as proactive and preventive features to help you improve your team's productivity and get the most from your network. Our support customers benefit from faster issue resolution, simplified operations and efficiencies, and reduced network issues.

Professional Services

With deep intellectual capital and purpose-built tools, our team delivers a range of standard and custom professional services designed to accelerate your value from HPE Aruba Networking technology.

Project based services include:

- Planning, audit, and assessment
- Architecture review and design
- Deployment, migration, and knowledge transfer

Annual subscription services include:

- Network optimization
- Intelligent Operations
- Customer Experience Management

Our [Education Services](#) allow your team to come up to speed quickly.

GreenLake for Networking

Deliver innovative business outcomes by leveraging new ways to consume, deploy and [manage networks](#).

[For additional technical information, available models and options, please reference the QuickSpecs](#)

Visit [HPE.com](https://www.hpe.com)

[Chat now](#)

© Copyright 2026 Hewlett Packard Enterprise Development LP. The information contained herein is subject to change without notice. The only warranties for Hewlett Packard Enterprise products and services are set forth in the express warranty statements accompanying such products and services. Nothing herein should be construed as constituting an additional warranty. Hewlett Packard Enterprise shall not be liable for technical or editorial errors or omissions contained herein.

Parts and Materials: HPE will provide HPE-supported replacement parts and materials required to maintain the covered hardware.

Parts and components that have reached their maximum supported lifetime and/or the maximum usage limitations as set forth in the manufacturer's operating manual, product quick-specs, or the technical product data sheet will not be provided, repaired, or replaced as part of these services.

Microsoft is a registered trademark of Microsoft Corporation. SAP HANA is a registered trademark of SAP SE (or its affiliates). VMware and vSAN are trademarks or registered trademarks of VMware, Inc. Nutanix is a registered trademark of Nutanix, Inc. All other third-party marks are property of their respective owners.

Image may differ from the actual product.

[PSN1012138130WWEN](#), May, 2026.

HEWLETT PACKARD ENTERPRISE

[hpe.com](https://www.hpe.com)

