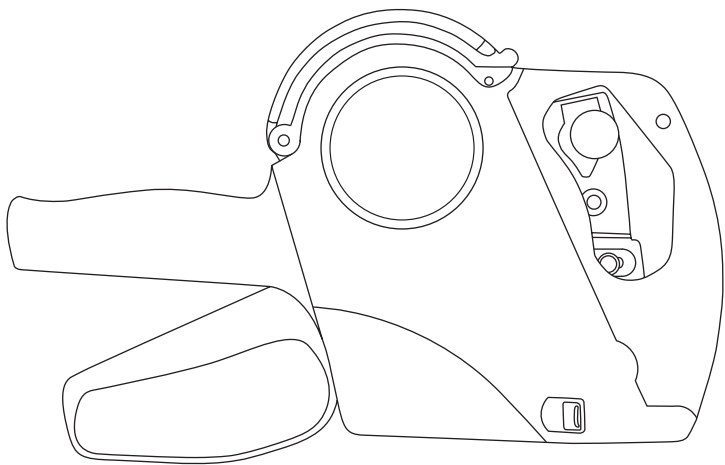
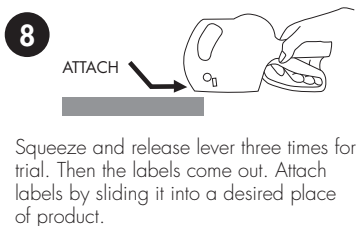
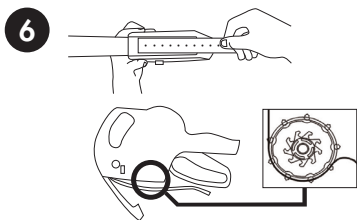
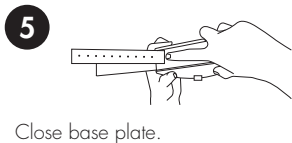
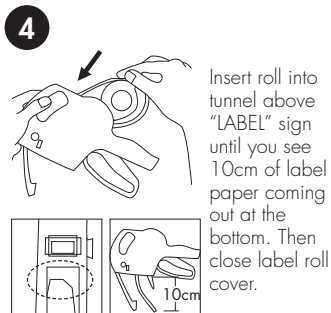
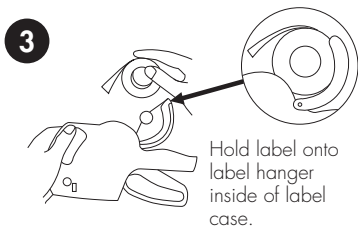
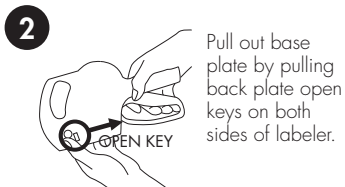
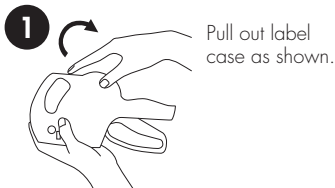


**One line  
pricing gun**  
Instructions  
T1970

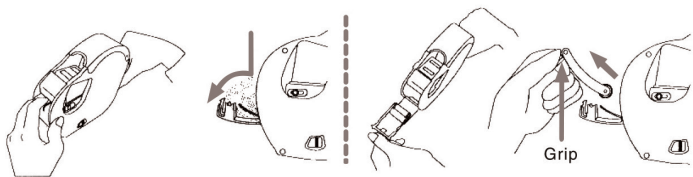


Question? Call us on 1300 11 SHOP

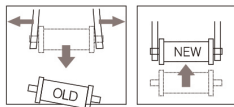
# How to operate hand labeler



## How to replace ink roller



Press and pull the zigzag-shaped cover (  ) to open the ink roller case.

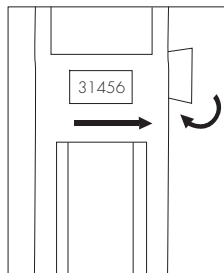


Widen ink roller holder's sides, and replace ink roller with a new one.

### Tip

Use a tissue or cloth to prevent getting ink on fingers.

## Setting letters



### Tip

1. Pull out or push in the dial shaft to a desired digit of letter-band then turn the shaft.
2. After you set up all letters, push in the shaft completely.

Question? Call us on 1300 11 SHOP

## How to fix printing position

Loosen the two screws on both sides of labeler close to letter head.

123456



123456

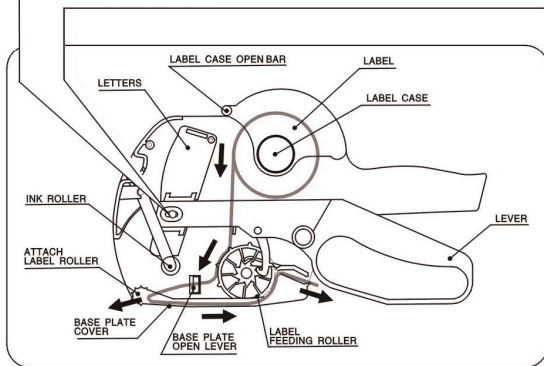


123456



Move them left or right as instructed on above diagram.

\*It is better not to change the position frequently.



## NOTE

Do not drop the labeler from 1 m or higher above the ground or do not expose it to places where shocks occur. The labeler consists of A.B.S and P.O.M resin that are sensitive to chemical reactions, especially A.B.S Do not expose to heat over 60 degrees Celsius (60°C). Do not inject general ink into ink roller. Special ink should be used for the product, otherwise the band will be damaged.