

Certificate of Analysis

Report Issued To: Nootropics Depot | 8380 S. Kyrene Rd., Suite 110, Tempe, AZ 85284

| Product Information | | | |
|---------------------|---|-----------------------|----------------|
| Product Name: | Shoden Ashwagandha Extract Capsules 120mg | CoA #: | ND-24-326 |
| Product Size: | 30 count | Lot Number: | SHACS1112223A |
| Production Date: | 11/30/2023 | Capsule Batch #: | SHACENZ1122VEG |
| Report Date: | 11/30/2023 | Raw Material Batch #: | SHA0530922 |
| Best By Date: | 11/2025 | RM spec #: | 215_v4 |
| Appearance: | Beige powder in clear capsule | Capsule Size: | Size 3 |
| Capsule Material: | Vegetable Cellulose | Capsule Color: | Clear |
| Other Ingredients: | Microcrystalline Cellulose 101, Silicon Dioxide, Magnesium Stearate | | |

Organoleptic Testing Results:

| Test | Specification | Result | Pass/Fail |
|-------|------------------|----------|-----------|
| Color | Org. Tube # 2215 | Conforms | Pass |
| Smell | Org. Tube # 2215 | Conforms | Pass |

Physical Testing Results:

| Test | Specification | Result | Pass/Fail |
|---------------------|-------------------|-----------------|-----------|
| Capsule Fill Weight | ≥177.3mg/capsule | 177.3mg/capsule | Pass |
| Capsule Mass Test | USP <2091> Test 1 | 224.3mg/capsule | Pass |

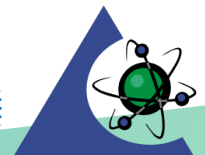
Analytical Testing Results:

| Test | Method | Methodology | Specification | Result | Pass/Fail |
|--|------------|----------------|-------------------------------|-----------------|-----------|
| Identity (<i>Withania somnifera</i> , root) | LAB TM-155 | HPTLC | Matches to Reference Material | Conforms | Pass |
| Identity (<i>Withania somnifera</i> , Leaf) | LAB TM-047 | HPTLC | Matches to Reference Material | Conforms | Pass |
| Assay - Total Withanolides (Shoden STAG) | LAB TM-100 | HPLC | ≥ 42mg/capsule | 44.4 mg/capsule | Pass |
| Withaferin A | LAB TM-100 | HPLC | Report Only | 8.6mg/capsule | N/A |
| Water Activity | LAB TM-012 | Water Activity | <0.73 | 0.26 | Pass |

Final Approval



Kennedi Enoch, Quality Liaison


PJLA
Testing
 Accreditation #113861