

# Certificate of Analysis

Report Issued To: Nootropics Depot | 8380 S. Kyrene Rd., Suite 110, Tempe, AZ 85284

Product Information			
Product Name:	Shoden Ashwagandha Extract Capsules 120mg	CoA #:	ND-24-557
Product Size:	30 count	Lot Number:	SHACS1020524
Production Date:	03/01/2024	Capsule Batch #:	SHACSL0323VEG
Report Date:	03/01/2024	Raw Material Batch #:	SHA0530223
Best By Date:	02/2026	RM spec #:	215_v4
Appearance:	Beige powder in clear capsule	Capsule Size:	Size 3
Capsule Material:	Vegetable Cellulose	Capsule Color:	Clear
Other Ingredients:	Microcrystalline Cellulose 101, Silicon Dioxide, Magnesium Stearate		

## Organoleptic Testing Results:

Test	Specification	Result	Pass/Fail
Color	Org. Tube # 2215	Conforms	Pass
Smell	Org. Tube # 2215	Conforms	Pass

## Physical Testing Results:

Test	Specification	Result	Pass/Fail
Capsule Fill Weight	≥174mg/capsule	182.5mg/capsule	Pass
Capsule Mass Test	USP <2091> Test 1	230.4mg/capsule	Pass

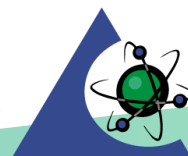
## Analytical Testing Results:

Test	Method	Methodology	Specification	Result	Pass/Fail
Identity - ( <i>Withania Somnifera</i> , Leaf)	LAB TM-047	HPTLC	Sample Bands Match Reference Bands	Conforms	Pass
Identity - ( <i>Withania Somnifera</i> , Root)	LAB TM-155	HPTLC	Sample Bands Match Reference Bands	Conforms	Pass
Total Glycowithanolides (Shoden STAG)	LAB TM-100	HPLC	≥ 42mg/capsule	70.7mg/capsule	Pass
Assay - Withaferin A	LAB TM-100	HPLC	Report Only	3.9mg/capsule	Pass
Loss on Drying	LAB TM-013	Moisture Balance	≤ 5%	3%	Pass
Heavy Metals	ICP-MS Metals - USP <233>/<730> Apex Metals-011/Metals-008	ICP/ICPMS	< 0.5 ppm ea.	As < 0.1250 ppm Cd < 0.0500 ppm Hg < 0.0125 ppm Pb < 0.0500 ppm	Pass
Water Activity	LAB TM-012	Water Activity	< 0.73	0.14	Pass

Final Approval



Kennedy Enoch, Quality Liaison


**PJLA**  
 Testing  
 Accreditation #113861