

# Certificate of Analysis

Report Issued To: Nootropics Depot | 8380 S. Kyrene Rd., Suite 110, Tempe, AZ 85284

Product Information			
Product Name:	Rhodiola Rosea Capsules 3% Rosavins 500mg	CoA #:	ND-24-324
Product Size:	60 count	Lot Number:	RRTCS1112223
Production Date:	11/22/2023	Capsule Batch #:	RRTCSLL0923VEG
Report Date:	11/22/2023	Raw Material Batch #:	RRT0090823
Best By Date:	11/2025	RM spec #:	017_v6
Appearance:	Light brown powder in a clear capsule	Capsule Size:	Size 0
Capsule Material:	Vegetable Cellulose	Capsule Color:	Clear
Other Ingredients:	Magnesium Stearate		

### Organoleptic Testing Results:

Test	Specification	Result	Pass/Fail
Color	Org. Tube # 1017	Conforms	Pass
Smell	Org. Tube # 1017	Conforms	Pass

### Physical Testing Results:

Test	Specification	Result	Pass/Fail
Capsule Fill Weight	≥505mg/capsule	531.7mg/capsule	Pass
Capsule Mass Test	USP <2091> Test 1	629mg/capsule	Pass

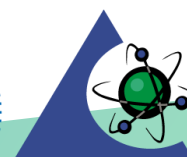
### Analytical Testing Results:

Test	Method	Methodology	Specification	Result	Pass/Fail
Identity - <i>Rhodiola rosea</i> , Root	LAB TM-084	HPTLC	Matches to BRM	Conforms	Pass
Total Rosavins (Rosavin, rosarin, rosin)	LAB TM-097	UPLC	≥ 15mg/capsule	15.8mg/capsule	Pass
Salidroside Assay	LAB TM-097	UPLC	≥ 5mg/capsule	5.3mg/capsule	Pass
Loss on Drying	LAB TM-013	Moisture Balance	Report Only	4.6%	N/A
Heavy Metals	ICP-MS Metals - USP <233>/<730> Apex Metals-011/Metals-008	ICP/ICPMS	≤ 0.5 ppm ea.	As < 0.1250 ppm Cd < 0.0500 ppm Hg < 0.0125 ppm Pb < 0.0500 ppm	Pass
Water Activity	LAB TM-012	Water Activity	< 0.73	0.26	Pass

Final Approval



Kennedi Enoch, Quality Liaison


**PJLA**  
**Testing**  
 Accreditation #113861