

Certificate of Analysis

Report Issued To: Nootropics Depot | 8380 S. Kyrene Rd., Suite 110, Tempe, AZ 85284

Product Information			
Product Name:	PanaMAX Optimized Ginseng Capsules	CoA #:	ND-24-797
Product Size:	120 count	Lot Number:	PMXCS1040224
Production Date:	04/22/2024	Capsule Batch #:	PMXCSLL1123VEGPK
Report Date:	04/22/2024	Capsule Material:	Veggie Capsules
Best By Date:	04/2026	Capsule Size:	Size 00
Appearance:	Brown powder in a capsule with a pink cap and clear body	Capsule Color:	Pink/Clear
Other Ingredients:	Microcrystalline Cellulose		

Organoleptic Testing Results:

Test	Specification	Result	Pass/Fail
Color	Org. Tube # 1008	Conforms	Pass
Smell	Org. Tube # 1008	Conforms	Pass

Physical Testing Results:

Test	Specification	Result	Pass/Fail
Capsule Fill Weight	≥704mg/capsule	704mg/capsule	Pass
Capsule Mass Test	USP <2091> Test 1	700mg/capsule	Pass

Ingredients

Ingredient Name	Content	Raw Material Batch #	Raw Material Spec #
Panax Ginseng Leaf	100mg/capsule	PGL0330423	013_v5
Panax Ginseg Root	100mg/capsule	PGR0251023	014_v4
Schisandra Chinensis Extract	250mg/capsule	SCH0400723	020_v2

Analytical Testing

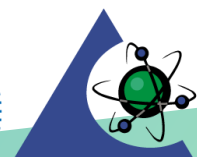
Test	Method	Methodology	Specification	Result	Pass/Fail
Identity - <i>Panax Ginseng</i> , Leaf	LAB TM-075	HPTLC	Matches to BRM	Conforms	Pass
Identity - <i>Panax Ginseng</i> , Root	LAB TM-075	HPTLC	Matches to BRM	Conforms	Pass
Identity - <i>Schisandra chinensis</i> , Fruit	LAB TM-088	HPTLC	Matches to BRM	Conforms	Pass
Total Ginsenosides (Dry Basis)	ATM-815-0297	HPLC	≥ 40mg/capsule	50.7mg/capsule	Pass
Total Ginsenosides (Dry Basis)	ATM-815-0297	HPLC	≥ 7mg/capsule	8.2mg/capsule	Pass
Schisandrins Assay	USP 43	HPLC	≥7.5mg/capsule	7.9mg/capsule	Pass

Test	Method	Methodology	Specification	Result	Pass/Fail
Heavy Metals	ICP-MS Metals - USP <233>/<730> Apex Metals-011/Metals-008	ICP/ICPMS	< 0.5 ppm ea.	As 0.392 ppm Cd 0.033 ppm Hg 0.008 ppm Pb 0.153 ppm	Pass
Water Activity	LAB TM-012	Water Activity	< 0.73	0.11	Pass

Final Approval



Kennedi Enoch, Quality Liaison


PJLA
Testing
 Accreditation #113861