

# Certificate of Analysis

Report Issued To: Nootropics Depot | 8380 S. Kyrene Rd., Suite 110, Tempe, AZ 85284

Product Information			
Product Name:	PrimaVie Shilajit Capsules 250mg	CoA #:	ND-24-444
Product Size:	30 count	Lot Number:	PMVCS2010224
Production Date:	01/12/2024	Capsule Batch #:	PMVCENZ0423VEG
Report Date:	01/12/2024	Raw Material Batch #:	PMV0210223
Best By Date:	01/2026	RM spec #:	016_v10
Appearance:	Brown powder in a clear capsule	Capsule Size:	Size 1
Capsule Material:	Vegetable Cellulose	Capsule Color:	Clear
Other Ingredients:	Maltodextrin, Microcrystalline Cellulose, Silicon Dioxide, Magnesium Stearate		

## Organoleptic Testing Results:

Test	Specification	Result	Pass/Fail
Color	Org. Tube # 1016	Conforms	Pass
Smell	Org. Tube # 1016	Conforms	Pass

## Physical Testing Results:

Test	Specification	Result	Pass/Fail
Capsule Fill Weight	≥ 249mg/capsule	250mg/capsule	Pass
Capsule Mass Test	USP <2091> Test 1	348mg/capsule	Pass

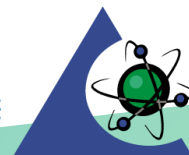
## Analytical Testing Results:

Test	Method	Methodology	Specification	Result	Pass/Fail
Identity ( <i>Asphaltum punjabianum</i> )	LAB TM-092	HPTLC	Sample Bands Match Reference Bands	Conforms	Pass
pH (2% w/v aqueous solution)	LAB TM-028	pH meter	≥ 5	9	Pass
Heavy Metals	ICP-MS Metals - USP <233>/<730> Apex Metals-011/Metals-008	ICP/ICPMS	≤ 1.0 ppm	As 0.6907 ppm Cd 0.1197 ppm Hg < 0.0125 ppm	Pass
Heavy Metals	ICP-MS Metals - USP <233>/<730> Apex Metals-011/Metals-008	ICP/ICPMS	≤ 1.5 ppm	Pb 1.030 ppm	Pass
Water Activity	LAB TM-012	Water Activity	< 0.73	0.20	Pass

Final Approval



Kennedy Enoch, Quality Liaison


**PJLA**  
 Testing  
 Accreditation #113861