

Certificate of Analysis

Report Issued To: Nootropics Depot | 8380 S. Kyrene Rd., Suite 110, Tempe, AZ 85284

| Product Information | | | |
|---------------------|---|-----------------------|----------------|
| Product Name: | PrimaVie Shilajit Capsules 250mg | CoA #: | ND-24-882 |
| Product Size: | 30 count | Lot Number: | PMVCS1032724A |
| Production Date: | 05/20/2024 | Capsule Batch #: | PMVCENZ0423VEG |
| Report Date: | 05/20/2024 | Raw Material Batch #: | PMV0210223 |
| Best By Date: | 05/2026 | RM spec #: | 016 v10 |
| Appearance: | Brown powder in a clear capsule | Capsule Size: | Size 1 |
| Capsule Material: | Vegetable Cellulose | Capsule Color: | Clear |
| Other Ingredients: | Maltodextrin, Microcrystalline Cellulose, Silicon Dioxide, Magnesium Stearate | | |

Organoleptic Testing Results:

| Test | Specification | Result | Pass/Fail |
|-------|------------------|----------|-----------|
| Color | Org. Tube # 1016 | Conforms | Pass |
| Smell | Org. Tube # 1016 | Conforms | Pass |

Physical Testing Results:

| Test | Specification | Result | Pass/Fail |
|---------------------|-------------------|-----------------|-----------|
| Capsule Fill Weight | ≥ 273mg/capsule | 273.7mg/capsule | Pass |
| Capsule Mass Test | USP <2091> Test 1 | 348.7mg/capsule | Pass |

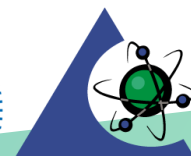
Analytical Testing Results:

| Test | Method | Methodology | Specification | Result | Pass/Fail |
|--|--|----------------|------------------------------------|----------------------------------|-----------|
| Identity (<i>Asphaltum punjabianum</i>) | LAB TM-092 | HPTLC | Sample Bands Match Reference Bands | Conforms | Pass |
| pH (2% w/v aqueous solution) | LAB TM-028 | pH meter | ≥ 5 | 9 | Pass |
| Heavy Metals | ICP-MS Metals - USP <233>/<730> Apex Metals-011/Metals-008 | ICP/ICPMS | ≤ 0.5 ppm ea. | Cd 0.1197 ppm Hg < 0.0125 ppm | Pass |
| Heavy Metals | ICP-MS Metals - USP <233>/<730> Apex Metals-011/Metals-008 | ICP/ICPMS | ≤ 1.0 ppm | As 0.6907 ppm | Pass |
| Heavy Metals | ICP-MS Metals - USP <233>/<730> Apex Metals-011/Metals-008 | ICP/ICPMS | ≤ 1.5 ppm | Pb 1.030 ppm | Pass |
| Water Activity | LAB TM-012 | Water Activity | < 0.73 | 0.24 | Pass |

Final Approval



Kennedy Enoch, Quality Liaison


PJLA
 Testing
 Accreditation #113861