

Report Issued To: Nootropics Depot | 8380 S. Kyrene Rd., Suite 110, Tempe, AZ 85284

Product Information			
Product Name:	Red Reishi Extract 1:1 Powder	CoA #:	ND-24-609
Product Size:	60g	Lot Number:	LGZS2030424
Production Date:	03/18/2024	Raw Material Batch #:	LGZ0380224
Report Date:	03/18/2024	Raw Material Spec #	053_v7
Best By Date:	03/2026	Appearance:	Dark Brown powder

Organoleptic Testing Results:

Test	Specification	Result	Pass/Fail
Color	Org. Tube # 1053	Conforms	Pass
Smell	Org. Tube # 1053	Conforms	Pass

Physical Testing Results:

Test	Specification	Result	Pass/Fail
Jar Fill Weight	≥60g/jar	60g/jar	Pass

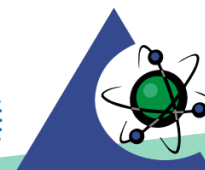
Ingredients

Test	Method	Methodology	Specification	Result	Pass/Fail
Identity - (<i>Ganoderma lucidum</i> , Fruiting body)	LAB TM-079	HPTLC	Matches to BRM	Conforms	Pass
β-Glucans	LAB TM-078	Fluorescence	≥ 175mg/serving	300mg/serving	Pass
A-Glucans	LAB TM-078	Fluorescence	≤ 25mg/serving	9mg/serving	Pass
Loss on Drying	LAB TM-013	Moisture Balance	Report Only	4.1%	Pass
Heavy Metals	ICP-MS Metals - USP <233>/<730> Apex Metals-011/Metals-008	ICP/ICPMS	< 0.5 ppm ea.	As < 0.1000 ppm Cd < 0.0400 ppm Hg 0.0248 ppm Pb 0.1715 ppm	Pass
Water Activity	LAB TM-012	Water Activity	< 0.73	0.09	Pass

Final Approval:



Kennedy Enoch, Quality Liaison


PJLA
Testing
 Accreditation #113861