

Report Issued To: Nootropics Depot | 8380 S. Kyrene Rd., Suite 110, Tempe, AZ 85284

Product Information			
Product Name:	Lemon Balm Powder   10:1 Water Ethanol Extract   <i>Melissa officinalis</i>	CoA #:	ND-25-046
Product Size:	125g	Lot Number:	LBMS1121324
Production Date:	12/13/2024	Raw Material Batch #:	LBM0200824
Report Date:	12/13/2024	Raw Material Spec #	010_v9
Best By Date:	12/2027	Appearance:	Brown, fine powder

**Organoleptic Testing Results:**

Test	Specification	Result	Pass/Fail
Color	Org. Tube # 1010	Conforms	Pass
Smell	Org. Tube # 1010	Conforms	Pass

**Physical Testing Results:**

Test	Specification	Result	Pass/Fail
Jar Fill Weight	≥125g/jar	125g/jar	Pass

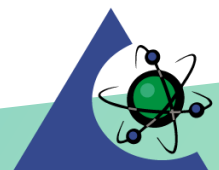
**Ingredients**

Test	Method	Methodology	Specification	Result	Pass/Fail
Identity - ( <i>Melissa officinalis</i> , leaf)	LAB TM-050	HPTLC	Matches to BRM	Matches to BRM	Pass
Rosmarinic acid (dry basis)	LAB TM-131	UPLC	≥ 5mg/serving	5mg/serving	Pass
Loss on Drying	LAB TM-013	Moisture Balance	≤ 5%	3%	Pass
Heavy Metals	ICP-MS Metals - USP <233>/<730> Apex Metals-011/Metals-008	ICP/ICPMS	≤ 0.5 ppm ea.	As < 0.1000 ppm Cd < 0.0400 ppm Pb < 0.0400 ppm Hg < 0.0100 ppm	Pass
Water Activity	LAB TM-012	Water Activity	< 0.73	0.11	Pass

Final Approval:



Kennedi Enoch, Quality Liaison


**PJLA  
Testing**

Accreditation #113861