

Report Issued To: Nootropics Depot | 8380 S. Kyrene Rd., Suite 110, Tempe, AZ 85284

| Product Information | | | |
|---------------------|--|-----------------------|----------------|
| Product Name: | InfiniFiber Advanced Synbiotic Fiber | CoA #: | ND-26-543 |
| Product Size: | 60 Servings | Lot Number: | INFFS2051126 |
| Production Date: | 05/11/2026 | Powder Blend Batch #: | INFFPSLL0526PB |
| Report Date: | 05/11/2026 | Appearance: | Cream Powder |
| Best By Date: | 05/2029 | Scoop Size: | 14.8cc |
| Other Ingredients: | Hydrolyzed Tapioca Starch | | |

Organoleptic Testing Results:

| Test | Specification | Result | Pass/Fail |
|-------|------------------|----------|-----------|
| Color | Org. Tube # 2401 | Conforms | Pass |
| Smell | Org. Tube # 2401 | Conforms | Pass |

Physical Testing Results:

| Test | Specification | Result | Pass/Fail |
|-----------------|---------------|----------|-----------|
| Jar Fill Weight | ≥972g/jar | 972g/jar | Pass |

Ingredients

| Ingredient Name | Content | Raw Material Batch # | Raw Material Spec # |
|--|----------------|----------------------|---------------------|
| Solnul Resistant Potato Starch | 3500mg/serving | RPS1120925 | 622_v2 |
| Partially Hydrolyzed Guar Gum | 2000mg/serving | PHGG0820526 | 654_v2 |
| Purified Alpha- Cellulose | 2000mg/serving | MCC0251025 | 251_4 |
| Acacia Fiber (<i>Acacia Penninervis</i>) | 2000mg/serving | GUM0990725 | 641_v1 |
| Oat Hull Fiber (<i>Avena sativa</i>) | 1500mg/serving | OHF1191125 | 652_v2 |
| Fenugreek Fiber (<i>Trigonella foenum-graecum</i> , Seed) | 1000mg/serving | FNF0090925 | 648_v1 |
| Larch Arabinogalactan (<i>Larix gmelinii</i>) | 1000mg/serving | LAB1230326 | 644_v2 |
| Pea Fiber (<i>Lathyrus oleraceus</i>) | 1000mg/serving | PFB0951025 | 649_v2 |
| Chia Seed Fiber (<i>Salvia hispanica</i>) | 750mg/serving | CSP0090625 | 642_v1 |
| Pumpkin Seed Powder (<i>Cucurbita pepo</i>) | 750mg/serving | PSP0090625 | 640_v1 |
| Apple Pectin (<i>Malus domestica</i>) | 250mg/serving | APF1241025 | 661_v1 |
| LactoSpore (<i>Heyndrickxia coagulans</i>) (2B CFU) | 133mg/serving | LTS0680326 | 646_v1 |

Analytical Testing Results:

| Test | Method | Methodology | Amount Per Serving |
|--------------------|--------------|-------------------------|--------------------|
| Total Calories | CALC_S | Calculation | 25 cal/serving |
| Total Fat | FALT_S | GC | 1g/serving |
| Sodium | ICP_S | ICP-OES | 47mg/serving |
| Total Carbohydrate | CALC_S | Calculation | 13g/serving |
| Dietary Fiber | AOAC 2022.01 | Fiber Rapid Integrated | 12g/serving |
| Soluble Fiber | AOAC 2022.01 | Fiber Rapid Integrated | 6g/serving |
| Insoluble Fiber | AOAC 2022.01 | Fiber Rapid Integrated | 6g/serving |
| Total Sugars | SGIC_2_S | Ion Chromatography | 0g/serving |
| Protein | DGEN_S | Dumas Combustion Method | 0g/serving |

| Test | Method | Methodology | Specification | Result | Pass/Fail |
|---|------------|-------------|-----------------------------------|-------------------------------|-----------|
| Identity - Solnul Resistant Potato Starch (<i>Solanum tuberosum</i> , tuber) | LAB TM-325 | HPTLC | Matches to ARS | Matches to ARS | Pass |
| Identity -Partially Hydrolyzed Guar Gum | LAB TM-001 | FTIR | Matches to Library Standard | Matches Per Visual Inspection | Pass |
| Identity- Purified Alpha-Cellulose | LAB TM-001 | FTIR | ≥ 95% Match to Reference Standard | 98% | Pass |

Report Issued To: Nootropics Depot | 8380 S. Kyrene Rd., Suite 110, Tempe, AZ 85284

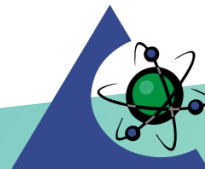
| Product Information | | | |
|---------------------|--|-------------|--------------|
| Product Name: | InfiniFiber Advanced Synbiotic Fiber | CoA #: | ND-26-543 |
| Product Size: | 60 Servings | Lot Number: | INFFS2051126 |

| Test | Method | Methodology | Specification | Result | Pass/Fail |
|---|---------------------------|----------------------------|------------------------------|--|-----------|
| Identity - Acacia Fiber (<i>Acacia Penninervis</i>) | LAB TM-001 | FTIR | Matches to Library Standard | Matches Per Visual Inspection | Pass |
| Identity - Oat Hull Fiber (<i>Avena sativa</i> , Aerial Part) | LAB TM-292 | HPTLC | Matches to BRM | Has Characteristics of BRM | Pass |
| Identity - Fenugreek Fiber (<i>Trigonella foenum-graecum</i> , Seed) | LAB TM-227 | HPTLC | Matches to BRM | Has Characteristics of BRM | Pass |
| Identity-Larch Arabinogalactan (<i>Larix gmelinii</i>) | LAB TM-001 | FTIR | Matches to Library Standard | Matches Per Visual Inspection | Pass |
| Identity - Pea Fiber (<i>Lathyrus oleraceus</i>) | LAB TM-335 | HPTLC | Matches to BRM | Matches to BRM | Pass |
| Identity - Chia Seed Fiber (<i>Salvia hispanica</i> , Seed) | LAB TM-325 | HPTLC | Matches to BRM | Matches to BRM | Pass |
| Identity - Pumpkin Seed Powder (<i>Cucurbita pepo</i> , Seeds) | LAB TM-324 | HPTLC | Matches to BRM | Matches to BRM | Pass |
| Identity- Apple Pectin Powder (<i>Malus domestica</i>) | LAB TM-001 | FTIR | Matches to Library Standard | Matches Per Visual Inspection | Pass |
| Identity - LactoSpore (<i>Heyndrickxia coagulans</i>) (2B CFU) | PIQ-MTD-005 (qPCR) | qPCR | Positive ID | Positive ID | Pass |
| Total Dietary Fiber | External (Medallion Labs) | AOAC 2022.01 or equivalent | ≥12.0g/serving | 12.246g/serving | Pass |
| Soluble Fiber | External (Medallion Labs) | AOAC 2022.01 or equivalent | ≥6g/serving | 6g/serving | Pass |
| Insoluble Fiber | External (Medallion Labs) | AOAC 2022.01 or equivalent | ≥6g/serving | 6g/serving | Pass |
| Resistant Starch | External | External | ≥ 2,100mg/serving | 2,170mg/serving | Pass |
| Weizmannia coagulans viable spore count | SLL/STP-B-014 | Enumeration | ≥ 15 Billion Spores per gram | 22 Billion Spores per gram | Pass |
| Heavy Metals | AZLAB-ICPMS | ICP/ICPMS | ≤ 0.5 ppm ea. | As 0.0127 ppm Cd < 0.01 ppm Hg < 0.01 ppm Pb 0.0155 ppm | Pass |
| Water Activity | LAB TM-012 | Water Activity | < 0.73 aw | 0.30 aw | Pass |

Final Approval:



Kennedy Enoch, Quality Liaison



PJLA
Testing
Accreditation #113861