

Report Issued To: Nootropics Depot | 8380 S. Kyrene Rd., Suite 110, Tempe, AZ 85284

Product Information			
Product Name:	InfiniFiber Advanced Synbiotic Fiber	CoA #:	ND-26-313
Product Size:	30 Servings	Lot Number:	INFFS2030926
Production Date:	03/09/2026	Powder Blend Batch #:	INFFPSLL0226PB
Report Date:	03/09/2026	Appearance:	Cream Powder
Best By Date:	03/2029	Scoop Size:	14.8cc
Other Ingredients:	Hydrolyzed Tapioca Starch		

Organoleptic Testing Results:

Test	Specification	Result	Pass/Fail
Color	Org. Tube # 2401	Conforms	Pass
Smell	Org. Tube # 2401	Conforms	Pass

Physical Testing Results:

Test	Specification	Result	Pass/Fail
Jar Fill Weight	≥486g/jar	486g/jar	Pass

Ingredients

Ingredient Name	Content	Raw Material Batch #	Raw Material Spec #
Solnul Resistant Potato Starch	3500mg/serving	RPS1120125	622_v1
Partially Hydrolyzed Guar Gum	2000mg/serving	PHGG0821025	654_v2
Purified Alpha- Cellulose	2000mg/serving	MCC0251025	251_4
Acacia Fiber (<i>Acacia Penninervis</i>)	2000mg/serving	GUM0990725	641_v1
Oat Hull Fiber (<i>Avena sativa</i>)	1500mg/serving	OHF1191125	652_v2
Fenugreek Fiber (<i>Trigonella foenum-graecum</i> , Seed)	1000mg/serving	FNF0090925	648_v1
Larch Arabinogalactan (<i>Larix gmelinii</i>)	1000mg/serving	LAB1231225	644_v2
Pea Fiber (<i>Lathyrus oleraceus</i>)	1000mg/serving	PFB0951025	649_v2
Chia Seed Fiber (<i>Salvia hispanica</i>)	750mg/serving	CSP0090625	642_v1
Pumpkin Seed Powder (<i>Cucurbita pepo</i>)	750mg/serving	PSP0090625	640_v1
Apple Pectin (<i>Malus domestica</i>)	250mg/serving	APF1190925	661_v1
LactoSpore (<i>Heyndrickxia coagulans</i>) (2B CFU)	133mg/serving	LTS0680825	646_v1

Analytical Testing Results:

Test	Method	Methodology	Amount Per Serving
Total Calories	CALC_S	Calculation	25 cal/serving
Total Fat	FALT_S	GC	1g/serving
Sodium	ICP_S	ICP-OES	47mg/serving
Total Carbohydrate	CALC_S	Calculation	13g/serving
Dietary Fiber	AOAC 2022.01	Fiber Rapid Integrated	12g/serving
Soluble Fiber	AOAC 2022.01	Fiber Rapid Integrated	6g/serving
Insoluble Fiber	AOAC 2022.01	Fiber Rapid Integrated	6g/serving
Total Sugars	SGIC_2_S	Ion Chromatography	0g/serving
Protein	DGEN_S	Dumas Combustion Method	0g/serving

Test	Method	Methodology	Specification	Result	Pass/Fail
Identity - Solnul Resistant Potato Starch (<i>Solanum tuberosum</i> , tuber)	IDT-SOP-72-01	HPTLC	Matches to BRM	Matches to BRM	Pass
Identity -Partially Hydrolyzed Guar Gum	LAB TM-001	FTIR	≥ 95% Match To Library Standard	96% Match	Pass
Identity- Purified Alpha-Cellulose	LAB TM-001	FTIR	≥ 95% Match to Reference Standard	98%	Pass

Report Issued To: Nootropics Depot | 8380 S. Kyrene Rd., Suite 110, Tempe, AZ 85284

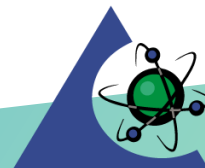
Product Information			
Product Name:	InfiniFiber Advanced Synbiotic Fiber	CoA #:	ND-26-313
Product Size:	30 Servings	Lot Number:	INFFS2030926

Test	Method	Methodology	Specification	Result	Pass/Fail
Identity - Acacia Fiber (<i>Acacia Penninervis</i>)	LAB TM-001	FTIR	Matches to Library Standard	Matches Per Visual Inspection	Pass
Identity - Oat Hull Fiber (<i>Avena sativa</i> , Aerial Part)	LAB TM-292	HPTLC	Matches to BRM	Has Characteristics of BRM	Pass
Identity - Fenugreek Fiber (<i>Trigonella foenum-graecum</i> , Seed)	LAB TM-227	HPTLC	Matches to BRM	Has Characteristics of BRM	Pass
Identity-Larch Arabinogalactan (<i>Larix gmelinii</i>)	LAB TM-001	FTIR	Matches to Library Standard	Matches Per Visual Inspection	Pass
Identity - Pea Fiber (<i>Lathyrus oleraceus</i>)	LAB TM-335	HPTLC	Matches to BRM	Matches to BRM	Pass
Identity - Chia Seed Fiber (<i>Salvia hispanica</i> , Seed)	LAB TM-325	HPTLC	Matches to BRM	Matches to BRM	Pass
Identity - Pumpkin Seed Powder (<i>Cucurbita pepo</i> , Seeds)	LAB TM-324	HPTLC	Matches to BRM	Matches to BRM	Pass
Identity- Apple Pectin Powder (<i>Malus domestica</i>)	LAB TM-001	FTIR	Matches to Library Standard	Matches Per Visual Inspection	Pass
Identity - LactoSpore (<i>Heyndrickxia coagulans</i>) (2B CFU)	PIQ-MTD-005 (qPCR)	qPCR	Characteristic	Positive Identification	Pass
Total Dietary Fiber	External (Medallion Labs)	AOAC 2022.01 or equivalent	≥12.0g/serving	12.246g/serving	Pass
Soluble Fiber	External (Medallion Labs)	AOAC 2022.01 or equivalent	≥6g/serving	6g/serving	Pass
Insoluble Fiber	External (Medallion Labs)	AOAC 2022.01 or equivalent	≥6g/serving	6g/serving	Pass
Resistant Starch	External	External	≥ 2,100mg/serving	2,275mg/serving	Pass
Weizmannia coagulans viable spore count	SLL/STP-B-014	Enumeration	≥ 15 Billion spores per gram	18 Billion CFU/g	Pass
Heavy Metals	AZLAB-ICPMS	ICP/ICPMS	≤ 0.5 ppm ea.	As 0.0124 ppm Cd < 0.01 ppm Hg < 0.01 ppm Pb 0.0107 ppm	Pass
Water Activity	LAB TM-012	Water Activity	< 0.73 aw	0.35 aw	Pass

Final Approval:



Kennedy Enoch, Quality Liaison



PJLA
Testing
Accreditation #113861