

Report Issued To: Nootropics Depot | 8380 S. Kyrene Rd., Suite 110, Tempe, AZ 85284

Product Information			
Product Name:	Creatine Monohydrate Powder (200 Mesh)	CoA #:	ND-24-1117
Product Size:	500g Serving	Lot Number:	CMHS1061924
Production Date:	06/19/2024	Raw Material Batch #:	CMH0250423
Report Date:	06/19/2024	Raw Material Spec #	071
Best By Date:	06/2027	Appearance:	White, fine powder

Organoleptic Testing Results:

Test	Specification	Result	Pass/Fail
Color	Org. Tube # 1071	Conforms	Pass
Smell	Org. Tube # 1071	Conforms	Pass

Physical Testing Results:

Test	Specification	Result	Pass/Fail
Jar Fill Weight	≥500g/jar	500g/jar	Pass

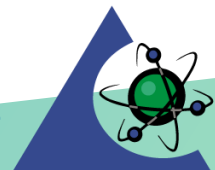
Ingredients

Test	Method	Methodology	Specification	Result	Pass/Fail
Identity	LAB TM-001	FTIR	≥ 95% Match	96%	Pass
Assay (dry basis)	GL-604	UPLC	≥ 4850mg/serving	5050mg/serving	Pass
Loss on Drying	LAB TM-013	Moisture Balance	≤ 12%	11%	Pass
Heavy Metals	ICP-MS Metals - USP <233>/<730> Apex Metals-011/Metals-008	ICP/ICPMS	≤ 0.5 ppm ea.	As < 0.1250 ppm Cd < 0.0500 ppm Hg < 0.0125 ppm	Pass
Heavy Metals	ICP-MS Metals - USP <233>/<730> Apex Metals-011/Metals-008	ICP/ICPMS	≤ 0.1 ppm	Pb < 0.0500 ppm	Pass
Water Activity	LAB TM-012	Water Activity	< 0.73	0.36	Pass

Final Approval:



Kennedy Enoch, Quality Liaison


PJLA
Testing
 Accreditation #113861