

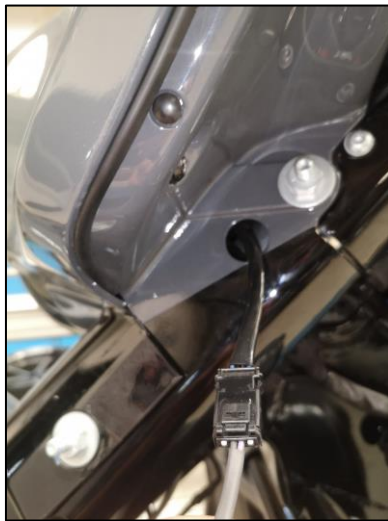
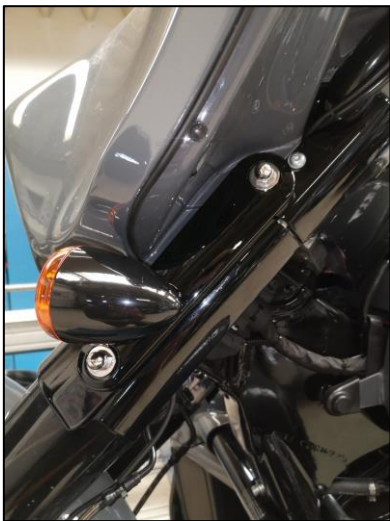
KODLIN

MOTORCYCLES

Installation Instructions



K68468 / K68469:
Kodlin Legit Indicators



1. Remove the 2 acorn nuts with a ½" socket or wrench

2. Unplug the connectors and carefully remove the OEM indicators

3. Cut the cable next to the indicator

4. Solder and insulate the cables

- **European models** black to black and purple to yellow
- **US models** connect black with black and purple with yellow. Insulate the blue wire (running light).
- **NOTE:** If you also want to use our turn signal as a running light, (dual-function) we suggest using Badlands part number, **IHL-03**, Kodlin part number **KUS11300**. This part will make our single function light into a running light and turn signal. Simply connect black with black with the turn signal, purple with purple, blue with blue on the Badlands unit and the red from the Badlands unit with yellow at the turn signal.



5. Remove the fairing mounting studs with a 9/16" socket or wrench.
(ATTENTION: Always finish one side first to avoid a "lose" fairing!)
6. Add medium strength threadlocker (i.e. blue Loctide®) to the 5/16 UNC x 1" Allen screws that are included in the kit
7. Plug in the connector of the Kodlin Legit indicator



8. Use a 1/4" Allen wrench to mount the indicator plates with the 5/16UNC x 1" Allen screws

The flashing frequency can change when converting the original indicators. The installation of a load equalizer will solve that problem.

Note: It is the installer's responsibility to ensure that all the fasteners are tightened before operation of the motorcycle (we recommend following the OEM ft lb torque specs). Kodlin Motorcycles will not provide warranty coverage on products or components lost due to improper installation or lack of maintenance. Periodic inspection and maintenance are required

Experience with soldering electric cables is necessary to install this product. We recommend working with a certified motorcycle shop.

Attention! Before each use of the vehicle, check the functionality of the indicator lights.