

SAGE **PARTS**

PRODUCT SHEET

SOLIDGOLD® AND SOLIDGOLD®+ 4.00X8 SOLID TIRE AND WHEEL ASSEMBLIES

DESIGNED FOR SUPERIOR PERFORMANCE

- BUILT TO RESIST THE HARSHTEST AIRPORT RAMP CONDITIONS
- EXCEPTIONAL SERVICE LIFE
- MAXIMUM STABILITY AND DEPENDABILITY

SAGE PARTS engineered the **SOLIDGOLD®** GSE tire and wheel assemblies to deliver exceptional service life, dependability, and value for even the most demanding ground support operations.

Demanding GSE operations require the most reliable tires on the market and the **SOLIDGOLD®** and **SOLDGOLD®+** 4.00X8 solid tire and wheel assemblies are constructed to meet every day operational demands with maximum stability, enhanced performance, and increased service life.

The **SOLIDGOLD®** series tires are designed as a low-rolling resist tire providing GSE operations with high durability and cost savings through



less tire changes, better fuel consumption, and reduced equipment damage. The tread layers are made from proprietary formulated natural rubber compounds and cure times to provide long life and eliminate rubber chunking found in other brands.

FEATURES

- MANUFACTURED WITH ONLY THE HIGHEST-GRADE COMPONENTS
- TREAD CAP IS PRODUCED WITH PREMIUM NATURAL RUBBER COMPOUNDS TO PROVIDE A LONG AND TROUBLE-FREE LIFE
- FRICTION BASE LAYER ENSURES MAXIMUM TORQUE DISPERSION, PROPER STABILITY, AND HANDLING
- SOLID FABRIC BASE CONSTRUCTION WITH SOFT, SPECIALIZED OUTER LAYERS
- BUILT WITH THE FINEST QUALITY TWO-PIECE RIMS, TORQUED TO INDUSTRY STANDARDS
- RECESSED LUG HOLES ARE DESIGNED FOR A SNUG AND SECURE FIT

ALL **SOLIDGOLD® SERIES TIRES ARE SPECIALTY FORMULATED FOR ALL GSE OPERATIONS**



SOLIDGOLD®+ 3-STAGE 4.00X8 SOLID TIRES

READY TO ROLL WITHOUT RESISTANCE

The **SOLIDGOLD®+** tire consists of 3-stage construction that combines high-quality materials and a very innovative design, to create the finest 4.00X8 tire on the market. The fabric base layer of the **SOLIDGOLD®+** tire is made up of a durable, specially engineered compound that allows for positive rim adhesion and stability, keeping the tire and rim assembly firmly in place at all times. The two outer layers use very durable natural rubber compounds formulated to withstand carrying heavy loads over long distances.

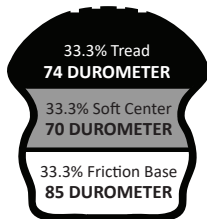


FEATURES

- ✓ **BUILT TO WITHSTAND HEAVY LOADS OVER LONG DISTANCES**
- ✓ **DEVELOPED TO PERFORM IN THE TOUGHEST RAMP CONDITIONS**
- ✓ **THREE SPECIALLY DESIGNED LAYERS**



3 INNOVATIVE HIGH QUALITY SPECIALLY DESIGNED LAYERS



- 1:** Tread layer is made from specially formulated natural rubber compounds to provide long life and eliminate rubber chunking found in other brands
- 2:** The inner core layer provides enhanced heat dissipation and maximum cushioning
- 3:** The base layer material provides a solid foundation and increased stability



SAGE PRODUCT#	DESCRIPTION	RIM CONFIGURATION
S3S400X8W250	3-STAGE	WHITE RIM/2.5 INCH HUB PILOT
S3S400X8B250	3-STAGE	BLACK RIM/2.5 INCH HUB PILOT
S3S400X8W338	3-STAGE	WHITE RIM/3.38 INCH HUB PILOT
S3S400X8B338	3-STAGE	BLACK RIM/3.38 INCH HUB PILOT



SOLIDGOLD® 2-STAGE 4.00X8 SOLID TIRES

A TIRE THAT CAN HANDLE THE HEAT

The SOLIDGOLD® tire is a 2-stage design that uses the same firm fabric base as the 3-stage SOLIDGOLD®+ tire but uses a single layer of very durable natural rubber compounds formulated for low-rolling resistance, a smooth ride, and long life.

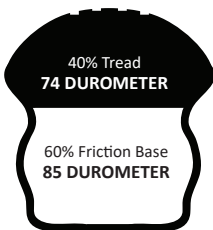


FEATURES

- ✓ BUILT FOR HIGH RELIABILITY AND LONG LIFE
- ✓ DEVELOPED TO PERFORM IN ALL RAMP CONDITIONS
- ✓ TWO HIGH-QUALITY SPECIALLY DESIGNED LAYERS



2 SPECIALLY DESIGNED LAYERS



- 1:** Tread layer is made from specially formulated natural rubber compounds to provide long life and eliminate rubber chunking found in other brands
- 2:** The base layer is made from a very durable fabric/rubber compound designed for increased tire stability and to extend overall service life



SAGE PRODUCT#	DESCRIPTION	RIM CONFIGURATION
S2S400X8W250	2-STAGE	WHITE RIM/2.5 INCH HUB PILOT
S2S400X8W338	2-STAGE	WHITE RIM/3.38 INCH HUB PILOT
S2S400X8B338	2-STAGE	BLACK RIM/3.38 INCH HUB PILOT

WHEEL RIMS

The **SOLIDGOLD®+** and the **SOLIDGOLD®** tire and wheel assemblies come with a split-rim high-gauge design. The two-piece rim bolt is connected and torqued to industry standards. The lug holes are recessed to allow for a snug fit to eliminate any tire slippage. All rims are produced using 6 gauge steel and are powder coated which will provide a high-quality finish. The tire and wheel assemblies are available in white or black.

USAGE

The **SOLIDGOLD®** series tires from **SAGE PARTS** are the ideal 4.00X8 solid tire that is used over a variety of vehicles including:

- BAGGAGE CARTS
- PALLET DOLLIES
- AIRCRAFT MAINTENANCE STANDS
- TOW BARS
- CONTAINER TRAILERS
- CREW STANDS
- GROUND POWER UNITS
- AIR START UNITS
- AND ANY OTHER EQUIPMENT WHERE A SOLID 4.00X8 TIRE IS USED



SPECIFICATIONS

SOLID TIRES

SIZE	RIM WIDTH		TREAD*	OUTER DIAMETER		SECTION WIDTH		LOAD CAPACITY 6 mph	
	in	mm		in	mm	in	mm	lbs	kg
4.00x8	3.00	76	R	16.00	406	4.00	102	2,840	1,288
4.00x8	3.75	95	R	16.00	406	4.80	122	3,266	1,481

*Tread Pattern R - Rib

SPLIT RIMS

RIM WIDTH		OUTER DIAMETER		SUITABLE TIRE SIZE
in	mm	in	mm	
3.00	76	8.00	203	4.00x8/5.00x8
3.75	95	8.00	203	4.00x8/5.00x8

SAGE PARTS SOLIDGOLD® series tires are sold as complete wheel and tire assemblies.

SOLIDGOLD® and **SOLIDGOLD®+** are available with black or white split rims.

Configurations and additional sizes are subject to change. Please contact **SAGE PARTS** for the latest specifications.