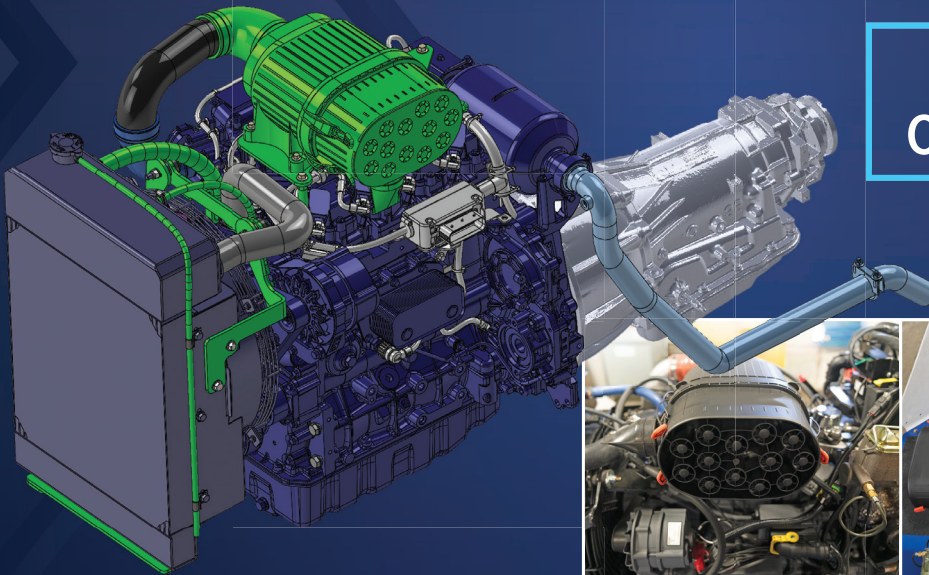


Upgrade your GSE to the **lowest emission technology**

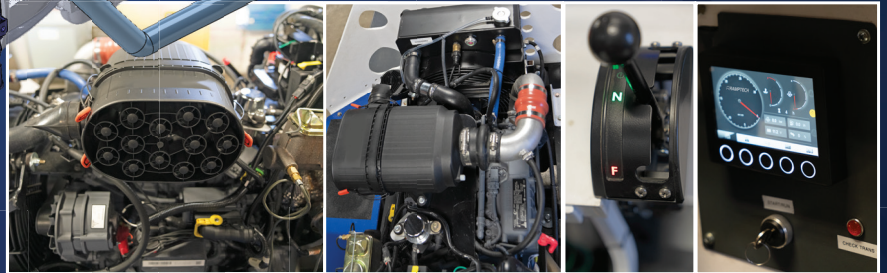


GSE TRACTOR
REPOWER PACK



**DROP-IN
CONVERSION**

2.9L 4-Cylinder engine and
4L70 transmission package



**LOWER
MAINTENANCE
COST**

UP TO 1,000 HOUR OIL
CHANGE INTERVALS



3-WAY CATALYST
EU STAGE V READY / EPA
TIER 4 COMPLIANT



**FULL ELECTRONIC
CONTROLLED SYSTEM**



**MAINTENANCE-FREE
VALVE TRAIN**



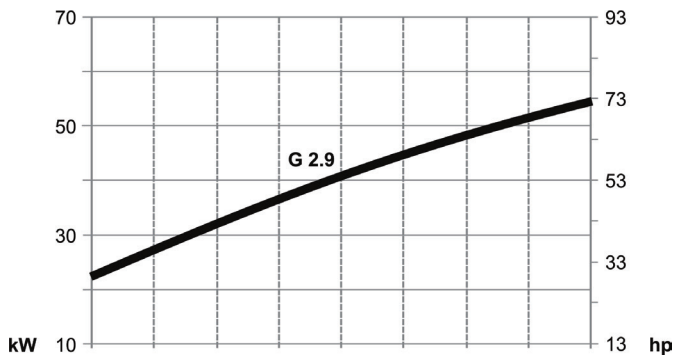
**IN-MARKET TECH
SUPPORT**



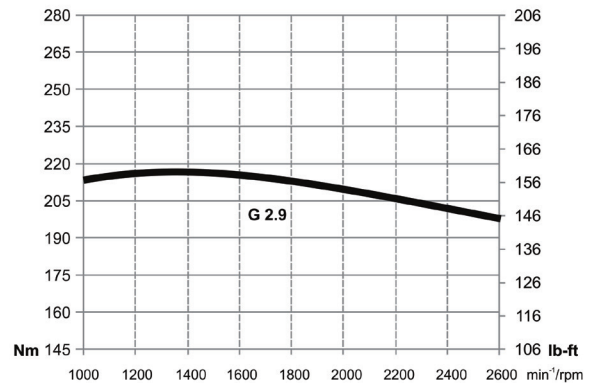
TECHNICAL SPECS

2.9L 4-CYLINDER ENGINE POWER PACK	
NO. OF CYLINDERS	4
BORE/STROKE	92/110 : 3.6 mm. /4.3 in.
DISPLACEMENT	2.97 L / 177 cu in.
MAX. NOMINAL SPEED	2200-2800 rpm
POWER OUTPUT	54 kW / 72 hp
AT SPEED	2800 rpm
MAX. TORQUE	215 lb. / 159 ft.
AT SPEED	1400-1600 rpm
MINIMUM IDLING SPEED	900 rpm
WEIGHT (ENGINE ONLY)	220 kg. / 485 lb.

POWER



TORQUE



*KITS CAN BE CUSTOMIZED TO MEET YOUR REQUIREMENTS



SCAN HERE to download this Product Sheet or visit SageParts.com/ramptech-repower-pack

US & CANADA +1-631-501-1300
customerservice-hq@sageparts.com
MEXICO, CARIBBEAN & LATIN AMERICA
+57-311-297-8100
customerservice-mcda@sageparts.com
ASIA PACIFIC +852 2949 6257
customerservice-hk@sageparts.com

UNITED KINGDOM
+44 0 161 8642246
customerserviceuk@sageparts.com
EUROPE +331 64 02 53 00
customerservice-eu@sageparts.com



We make it easy to order online at SAGEPARTS.COM