

# QL-1100 Series

QL-1100  
QL-1110NWB

[brother.com.au](http://brother.com.au)



# QL-1100 Series

The Brother QL-1100 series professional label printers offer unrivalled versatility not only in the office, but also warehouse, postal, facilities management and other industries.

Create labels with black print up to 3m\* in length, from PC, Mac®, iOS+ or Android™ devices. All models allow easy connection to desktop computers using USB. The flagship Brother

QL-1110NWB also adds Wireless, Ethernet and Bluetooth® wireless connectivity.

For developers and systems integrators looking to incorporate label printing as part of their solutions, software development kits for Windows, iOS+ and Android offer an easy way to add support for the Brother QL-1100 series label printers.

\* Print up to 3m in length from P-Touch Editor or 1m in length from mobile apps and P-Touch Editor Lite. + Only the QL-1110NWB is iOS compatible.



## Key Features:



Prints on labels up to 103mm wide, capable of printing shipping postage labels for packages



Wide range of connectivity options



PC, Mac®, iOS+ and Android™ compatibility



High speed printing of up to 69 labels per minute\*



Use continuous rolls and cutter to print labels up to 3m\*\* in length



Barcode Label Crop and Print function lets online sellers easily print product and other barcode labels from A4/Letter size label sheet templates (Windows® OS only)

\* Based on using standard address labels, black text only, at 300 X 300 dpi.

\*\* Print up to 3m in length from P-Touch Editor or 1m in length from mobile apps and P-Touch Editor Lite.

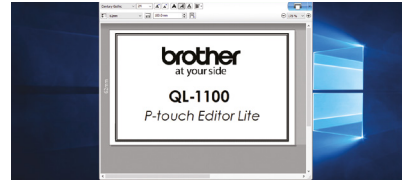
+ Only the QL-1110NWB is iOS compatible.

# Packed with features

## Software Solutions

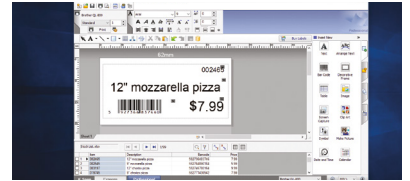
### P-touch Editor Lite / P-touch Editor Lite LAN

Built inside the Brother QL-1100, this easy to use label design software works without the need to install software or drivers. Working like a USB flash drive, simply connect to your PC using USB, and launch the software from the drive that appears. Include images, frames and any of your fonts on your label design and print! A version for network connected models is also available - simply run the software to allow multiple PC's in an office to print labels to the one printer. Again, no installation needed.



### P-touch Editor with Microsoft Office add-in

Design professional labels including images and logos, barcodes and frames. Link to data contained in Excel or .csv files, to print multiple labels quickly and efficiently. The Microsoft Office add-in lets you highlight, click and print right from within Word, Excel, or Outlook.



### Brother iPrint & Label app for iOS\* and Android smartphones/tablets

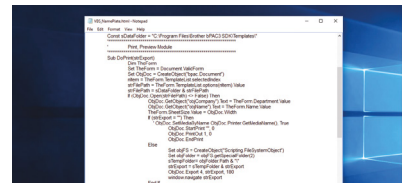
Print labels on the Brother QL-1100 series using the free iPrint&Label app. Connect via Wi-Fi or Bluetooth® (on Brother QL-1110NWB), and choose one of the pre-defined templates or quickly design your label from scratch. This free app is available from your mobile device's app store by searching "Brother iPrint&Label".



### Software Development Kits for Windows, iOS\* and Android

System integrators and software developers can now take advantage of various Brother SDK's that allow easy integration of label printing directly within their own apps and software. For more information please visit:

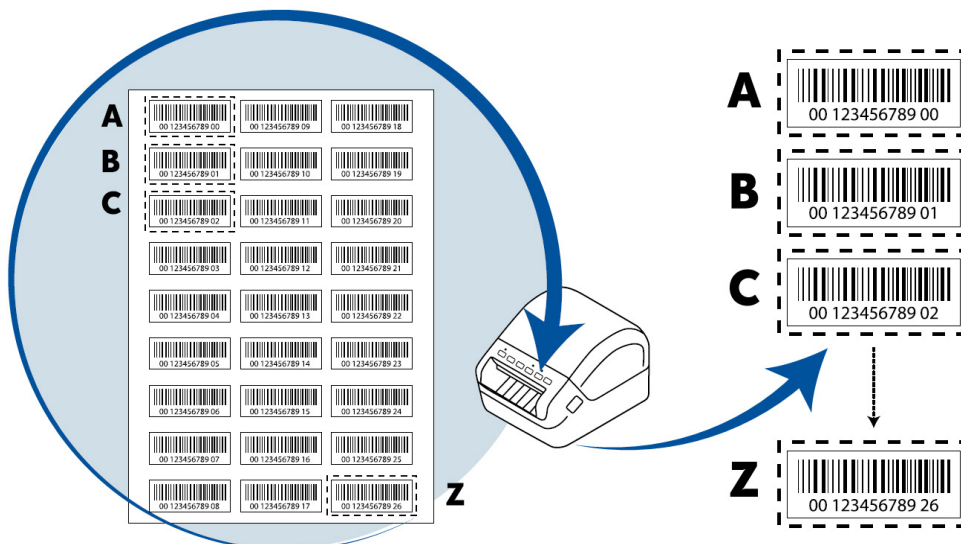
<https://www.brother.com.au/service-and-support/software-development-kit.html>



\* Only the QL-1110NWB is iOS compatible.

## Barcode Label Crop and Print Windows® OS only

The Barcode Label Crop and Print feature on the Brother QL-1100 series automatically identifies and crops individual labels (including barcodes) from an A4/Letter sized sheet and prints each label one by one. You can print the entire sheet of labels to the QL-1100 series individually or select a section of labels using the snapshot feature and only the selected labels will print individually. This is a great feature for product labels or other labels that sheet formats are already generated. Now you can easily print only the labels you need quickly.



## For Warehousing and Logistics

In busy warehouses and mail rooms, accurate and timely labelling of packages, envelopes and product cartons is essential to ensure the smooth running of all logistics operations. The Brother QL-1100 series is capable of printing full size shipping postage labels.



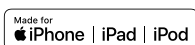
## DK Rolls for the QL-1100 label printer series

Wide range of labels available in paper and plastic film material, pre-sized labels or continuous rolls available to use with the QL-1100 Series.

DK Die-Cut Labels	Material	Colour	Size	Item No.
Standard address label (400/roll)	Paper	White	29 x 90 mm	DK-11201
Large address label (400/roll)	Paper	White	38 x 90 mm	DK-11208
Small address label (800 roll)	Paper	White	29 x 62 mm	DK-11209
Shipping label (300/roll)	Paper	White	62 x 100 mm	DK-11202
File folder label (300/roll)	Paper	White	17 x 87 mm	DK-11203
Multi-purpose label (400/roll)	Paper	White	17 x 54 mm	DK-11204
Square label (1000/roll)	Paper	White	23 x 23 mm	DK-11221
CD/DVD label (100/roll)	Film	White	58 mm	DK-11207
Round label (1200/roll)	Paper	White	12 mm	DK-11219
Round label (1000/roll)	Paper	White	24 mm	DK-11218
Large multi-purpose (600/roll)	Paper	White	102 x 51 mm	DK-11240
Large shipping label (180/roll)	Paper	White	103 x 164 mm	DK-11247
DK Continuous-Length Tapes - 30.48m	Material	Colour	Size	Item No.
Continuous-length	Paper	White	12 mm	DK-22214
Continuous-length	Paper	White	29 mm	DK-22210
Continuous-length	Paper, non-adhesive	White	54 mm	DK-N55224
Continuous-length	Paper	White	62 mm	DK-22205
Continuous-length	Paper, removable	White	62 mm	DK-44205
Continuous-length	Paper, removable	Yellow	62 mm	DK-44605
Continuous-length	Paper	White	102 mm	DK-22243
DK Continuous-Length Tapes - 15.24m	Material	Colour	Size	Item No.
Continuous-length	Film	White	29 mm	DK-22211
Continuous-length	Film	White	62 mm	DK-22212
Continuous-length	Film	Yellow	62 mm	DK-22606
Continuous-length	Film	Clear	62 mm	DK-22113

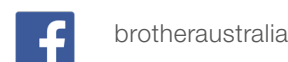
# Technical Specifications for the QL-1100 Series

	QL-1100	QL-1110NWB
<b>Media/ Printing</b>		
Printing technology	Direct Thermal	
Maximum Resolution (dpi)	300 x 300 dpi	
Max. Print speed (labels per min)*	Up to 69 labels per minute (110mm/sec)	
Tape Sizes	Die-cut and Continuous	
Maximum tape width	103mm	
Maximum print width	103mm	
Maximum label length	Up to 3m from P-Touch Editor or 1m from mobile apps and P-Touch Editor Lite	
Cutter	Auto	
Cutter Life	Up to 300,000 (die-cut labels) 150,000 (continuous labels)	
<b>Connectivity</b>		
USB	USB version 2.0 full-speed	
USB host capability	Yes (HID class)	
Bluetooth wireless technology	No	Bluetooth 2.1+EDR
Bluetooth profiles	No	SPP(Serial Port Profile) OPP(Object Push Profile) BIP(Basic Imaging Profile) HCRP(Hard Copy Cable Replacement Profile) iAP(MFIsupported) profile
Wireless LAN	No	IEEE802.11b/g/n
Wireless LAN security (Infrastructure mode)	No	WEP, WPA-PSK/WPA2-PSK (TKIP/AES), LEAP (CKIP), EAP-FAST (TKIP/AES), PEAP (TKIP/AES), EAP-TTLS (TKIP/AES), EAP-TLS (TKIP/AES)
AirPrint	No	Yes
Wired LAN	No	10/100 Base-TX
<b>Mobile Device Compatibility</b>		
Software/App^	Brother iPrint&Label, free app download for USBtoGo printing from your Android™ mobile device	AirPrint®, Brother iPrint&Label, free app download for wireless printing from your Apple® or Android™ mobile device
<b>Memory</b>		
Flash (for label templates)	7.8	
Locations (for label templates)	99	255
<b>Power</b>		
Power	220-240V AC Internal Power Supply 120V ~ 50/60Hz 1.6A	
ENERGY STAR® certified	Yes	
<b>Weights and Dimensions</b>		
Dimensions	170mm x 221mm x 151mm	
Weight	1.71kg	1.71kg
<b>Carton Contents</b>		
Includes	P-touch Editor Software & Driver (Web Download), AC Power Cable, USB Cable, Starter Rolls: DK-11247 Diecut Large Shipping Labels (41 labels), DK-22205 Continuous Length Paper Tape – 2.4" (62mm) x 16.4'	
<b>Software / Firmware</b>		
Operating system support	PC: Windows 10, Windows 8/8.1, Windows 7, Windows Server 2008, 2008 R2, 2012, 2012 R2, 2016, Mac: OS X® v10.11.x - v10.13.x	
SDK availability (visit <a href="http://www.brother-usa.com/lp/civ/home.aspx">http://www.brother-usa.com/lp/civ/home.aspx</a> )	b-PAC (for Windows) Brother Print SDK for Android™ (only USB)	b-PAC (for Windows) Brother Print SDK for Android™ Brother Print SDK for iPhone/iPad (for iOS+)
Supported printer commands	Raster, ESC/P, P-touch Template	
Barcode symbologies (using P-touch Editor)	CODE39, CODE128, UCC/EAN128(GS1-128), ITF(I-2/5), CODABAR(NW-7), UPC-A, UPC-E, EAN13, EAN8, ISBN-2(EAN13 AddOn2), ISBN-5(EAN13 AddOn5), Laser Barcode, POSTNET, RSS(RSS14 Standard, RSS14 Truncated, RSS14 Stacked, RSS14 Stacked Omni, RSS Limited, RSS Expanded, RSS Expanded Stacked), PDF417(Standard, Truncate, Micro), QR code(Model1, Model2, Micro), Data Matrix(ECC Square, ECC Rectangular), MaxiCode(Model2, Model3, Model4, Model5) RSS symbols / CODE93 / POSTNET / UPC/EAN EXTENSION / MSI / QR Code (model 1, model 2, micro QR)PDF417 (Standard, Truncate, Micro)PDF417 / Data Matrix(ECC200 Square, ECC200 Rectangular) / MaxiCode / Aztec (Windows only), IMB	
Barcode symbologies (Built-in printer firmware)	CODE39, CODE128, UCC/EAN-128(GS1-128), ITF(I-2/5), CODABAR(NW-7), UPC-A, UPC-E, EAN13(JAN13), EAN8, GS1 DataBar(RSS)(GS1 DataBar Omnidirectional, GS1 DataBar Truncated, GS1 DataBar Stacked, GS1 DataBar Stacked Omnidirectional, GS1 DataBar Limited, GS1 DataBar Expanded, GS1 DataBar Expanded Stacked), PDF417(Standard, Truncate, Micro), QR Code(Model 1, Model 2, Micro), Data Matrix (ECC200 Square, ECC200 Rectangular), MaxiCode, CODE93, POSTNET, UPC-E EXTENSION, MSI, Aztec	
Internal fonts	<b>Bitmap fonts:</b> Letter Gothic Bold, Helsinki, Brussels, San Diego, Brougham / <b>Font sizes:</b> 24, 32, 48 dots <b>Outline fonts:</b> Letter Gothic Bold, Helsinki, Brussels / <b>Font sizes:</b> 33-400 dots (22 sizes)	
Date/Time stamp	PC generated	



## Working with you for a better environment

At Brother, our green initiative is simple. We strive to take responsibility, act respectfully and try to make a positive difference to help build a society where sustainable development can be achieved. We call this approach Brother Earth.



All specifications correct at the time of printing and are subject to change. Brother is a registered trademark of Brother Industries Ltd. Brand product names are registered trademarks or trademarks of their respective companies.