



Cartridge loading type  
label installation



Direct PLU keys  
& function keys

# CL5000J SERIES

## Label Printing Scale

CL5000J with its reliable weighing function and sophisticated design is possibly the best equipment for enhancing your business operation.

Management functions, including data management, price control and PLU control, are necessary for any retail business environments.

- **Trade Approved (NMI No. 6/4D/366)**
- Flexible & reliable network system (wired/wireless)
- Easy loading printing cartridge



# CAS

# CL5000J SERIES | Label Printing Scale

## Features

### LCD Display

The LCD display is used for displaying 4 digits of tare value, 5 digits of weight value, 6 digits of unit price and 6 digits of total price. The dot matrix LCD display (60x8 dots) is used for displaying commodity name up to 12 characters, for all program menus, PLU names, scroll message etc. The bright blue display gives high legibility for programming and promotion.

### Printer & Carriage

High speed printing (75mm/sec). Cartridge loading type for easy replacement of new label/ticket rolls.



### PLU Keys

The membrane type keypad adds a sophisticated look to the CL5000J. Double-click function provides easy access to the key's secondary PLU.

2MB memory can hold up to 6000 PLUs with commodity name or ingredients.

- 1,000 Direct Ingredients (300byte / pcs)
- 100 Indirect Ingredients (400byte / pcs)



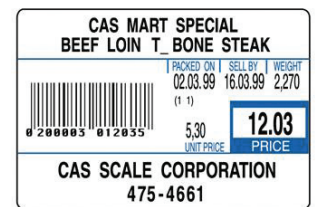
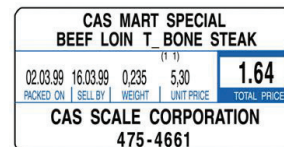
### Label Formats

There are 30 preset labels installed and 10 label formats can be modified freely with CLWorks PC Program. CL5000J allows full graphic label design and Various Label sizes can be used.

### Barcode

Almost every conventional barcode types are available:

UPC, EAN13, EAN13A5, I2OF5, CODE128, CODE39, CODE93, CODABAR, IATA2OF5



### Communication

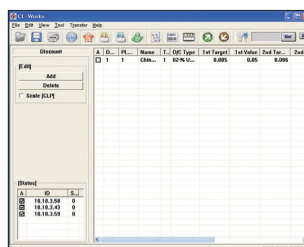
CL5000J is built in TCP/IP (Wired) network card and RS-232C interface used to connect with PC or printer.

- IEEE802. 11G Ethernet supports data transmission speed of 50 PLU/sec

## PC software: CL-Works

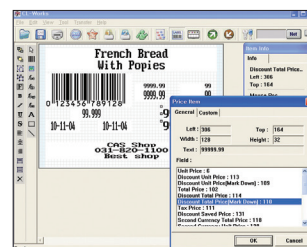
User-Friendly Scale management software.

PLU programming, store data, sales report, label editor, key-pad editor and much more, control all the program data by CL-works program.



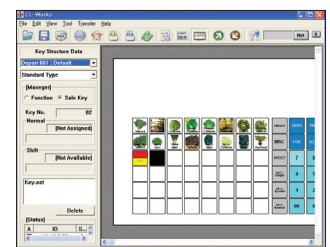
### PLU Editor

Easy PLU control.  
Allows PLUs to be managed by excel.



### Label Editor

20 modifiable label formats.  
Easy downloading of label formats.



### Keypad Editor

Easy to setup and download.  
Key design - colour Image.  
Keypad supported.



# CL5000J SERIES | Label Printing Scale

## Product Line-up

CL5000 Series has three models to choose from, non-pole, pole type display & hanging. Rear displays available for both bench models.



CL5000J-CB



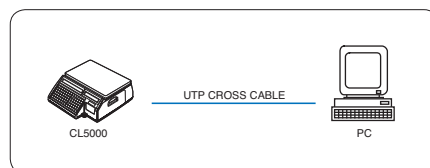
CL5000J-CR



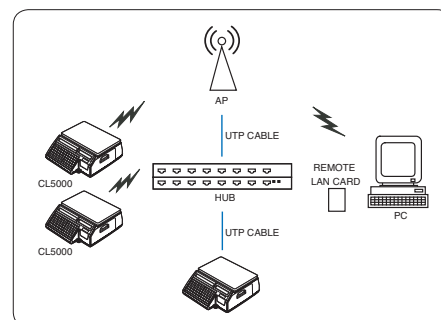
CL5000J-CH

## Network System

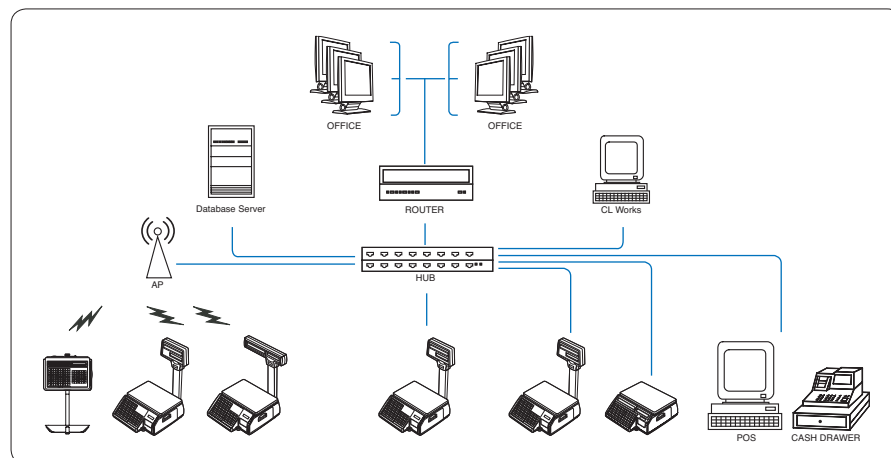
- TCP/IP communication protocol
- IEEE802.11G specification wireless network
- 64/128 bit WEP data security system, WPA(TKIP), WPA-II
- One to one & multi to multi & wired/wireless network
- Network structure for:
  - Large, medium and small independent markets
  - Hyper market
- Data transmission time scheduling
- Remote database server accessing
- Multiple scale report management



1 to 1



Multi to Multi



Mixed with Wired / Wireless Network

# CL5000J SERIES | Label Printing Scale

## SPECIFICATIONS

Model	CL5000J Series		
Max. Capacity (kg)	6	6/15	15/30
Readability (g)	2	2/5	5/10
External Resolution	1/3,000 (Dual Interval)		
Display Digit	4 / 5 / 6 / 6 (Preset tare / weight / unit price / total price)		
Display Type	4 LCD displays + Dot Matrix LCD display		
Printing Speed	75mm / sec		
Printer Resolution	202dpi		
Label Size	Width : 40mm ~ 64mm Length : 30mm ~ 120mm		
Operating Temp.	-10°C ~ 40°C		
Power	AC 100 ~ 240V, 50 / 60Hz		
Platter Size (mm)	320(W) x 246(D)		
Dimensions (mm)	CB type : 408(W) x 432(D) x 173(H) CR type : 408(W) x 493(D) x 607(H) CH type : 420(W) x 281(D) x 706(H)		
Product Weight (kg)	CB type : 10.5 CR type : 12 CH type : 12.2		

## FEATURES

- Memory capacity: 6,000 plus & 1,000 ingredients
- Speed key
  - Standard: 96 speed keys [48 keys x 2 (double -click)]
  - Pole: 144 speed keys [72 keys x 2 (double -click)]
- 30 label format & 10 free format designs
- High-speed thermal printer
- Cartridge loading-type label installation
- 40 fixed format & 20 customized format designs
- Communication network (TCP/IP)
- PC manager program (CL - Works)

## OPTIONS

- Wireless bridge card
- Platter with back rail
- Large platter or Fish tray
- Metal-dome switch



UNIT 8, NORTHLINK, 459 TUFNELL ROAD  
BANYO QLD 4014, AUSTRALIA

TEL: +61 (0)7 3267 7767 FAX: +61 (0)7 32 67 1818

EMAIL: sales@cassscale.com.au

<http://www.cassscale.com.au>

Specifications are subject to change for improvement without prior notice.

## DIMENSIONS

