

SEALINK +232-DB9

User Manual | 2105R/2105R-C



SEALEVEL®

Contents

CONTENTS 2

BEFORE YOU GET STARTED 3

PRODUCT DESCRIPTION 4

ELECTRICAL SPECIFICATIONS 11

TECHNICAL SPECIFICATIONS 12

HARDWARE CONFIGURATION 13

INSTALLATION 14

HARDWARE INSTALLATION 17

APPENDIX A - HANDLING INSTRUCTIONS 24

APPENDIX B – TROUBLESHOOTING 25

APPENDIX C – ELECTRICAL INTERFACE 29

APPENDIX D – ASYNCHRONOUS COMMUNICATIONS 30

APPENDIX E – CABLE DRAWING 31

APPENDIX F – HOW TO GET ASSISTANCE 32

APPENDIX G – COMPLIANCE NOTICES 33

WARRANTY 34

Before You Get Started

What's Included

The SeaLINK+232-DB9 is shipped with the following items. If any of these items are missing or damaged, please contact Sealevel for replacement.

- **2105R (USB Type A Connector) or 2105R-C (USB Type C Connector)** – USB to RS-232 Single Port Serial Interface Adapter
- **Serial Loopback Plug** – Diagnostics/Troubleshooting

Advisory Conventions



Warning

The highest level of importance used to stress a condition where damage could result to the product, or the user could suffer serious injury.



Important

The middle level of importance used to highlight information that might not seem obvious or a situation that could cause the product to fail.



Note

The lowest level of importance used to provide background information, additional tips, or other non-critical facts that will not affect the use of the product.

Product Description

The Sealevel Systems, Inc. **SeaLINK+232-DB9** serial interface adapter provides the PC with a single USB to RS-232 asynchronous serial port providing a versatile interface for common RS-232 needs. The SeaLINK+232 connects to a PC's external USB port, so it does not require opening the computer case. Resources such as IRQs and I/O addresses are also not utilized.

The SeaLINK® USB to RS-232 serial adapter utilizes Sealevel's expertise in military-grade designs by incorporating a ruggedized, overmolded enclosure design. This improves the reliability and durability in industrial and mobile applications such as GPS navigation systems, barcode readers, signature input devices, serial printers, scales, and similar applications.

The SeaLINK+232-DB9 features programmable baud rate and data formats with 128-byte receive and 256-byte transmit buffers. The USB serial adapter is compatible with all standard PC baud rates (300 bps and above) and supports high-speed communication to 921.6K bps. The SeaLINK+232-DB9 is powered by the USB port and status LEDs molded into the enclosure indicate serial data activity and connection to the host.

Sealevel SeaCOM USB software drivers and utilities make installation and operation easy using Windows and Linux operating systems. After installing the software, simply plug the SeaLINK+232-DB9 into an available USB port and the serial port is recognized as a standard COM port by the host system enabling compatibility with legacy software.

The attached cable is 44 inches long and fully shielded to protect the SeaLINK+232-DB9 from RF and EMI interference that is common in mobile and industrial environments. Standard operating temperature range is 0 - +70°C, and extended temperature range (-40 - +85°C) is optional.

Features




- Compliant with RoHS and WEEE directives
- High-speed UART with 128-byte Rx FIFO and 256-byte Tx FIFO
- Data rates from 300 bps to 921.6K bps
- All modem control signals implemented
- Powered by USB connection
- DB9M connector



Optional Items

Depending upon your application, you are likely to find one or more of the following items useful with the SeaLINK+232-DB9. All items can be purchased from our website (www.sealevel.com) or by calling our sales team at (864) 843-4343.

Cables

DB9F to DB25M (RS-232) Extension Cable (Part# CA177)	
<p>The CA177 is a standard AT-style RS-232 modem cable with a DB9F connector on one end and a DB25M connector on the other. This cable is 72 inches in length.</p>	
DB9F to DB9M Extension Cable (Part# CA127)	
<p>The CA127 allows users to extend a DB9 cable up to six feet. The connectors are pinned one-to-one, so the cable is compatible with any device or cable that has DB9 connectors.</p>	
DB9 Female to DB9 Female Null Modem Cable (Part# CA213)	
<p>The CA213 is a 10' null modem cable with DB9 female connectors on both ends. Null modem cables cross pins 2 and 3 (Tx and Rx) and loop back handshaking signals (RTS to CTS and DTR to DSR) to allow two computers, with DB9 serial ports, to communicate.</p>	

Hubs (For 2105R only)

High Speed 4-Port USB 2.0 Hub with SeaLATCH USB Ports (Part# HUB4P)

The hub is USB 2.0 compliant, providing a full 480M bps data rate to the host, and is backwards compatible with USB 1.1 and 1.0 devices. The HUB4P includes a wall-mount AC adapter that supplies a full 500mA to each attached USB peripheral. The power supply outputs 5VDC @ 2.4A and has a locking DC connector to prevent accidental removal of the power cable.



High Speed 7-Port USB 2.0 Hub (Part# Hub 7P)

The HUB7P is USB 2.0 compliant, providing a full 480M bps data rate to the host, and is backwards compatible with USB 1.1 and 1.0 devices. The powered hub includes a wall-mount AC adapter that supplies a full 500mA to each attached USB peripheral. The power supply outputs 5VDC @ 4A and has a locking DC connector to prevent accidental removal of the power cable. The hub is housed in a rugged plastic enclosure, and status LEDs indicate external power, connection to the host, and fault conditions.



Adapters and Converters

DB9F to RJ45 Modular Adapter (Item# RJ9S8)

The RJ9S8 is a DB9 female to RJ45 adapter. It can be configured without tools and is an excellent choice for using available infrastructure wiring.



DB9 Female to DB25 Male - RS-232 Converter (Part# CA241)

Converts an RS-232 DB9 Male connector to an RS-232 DB25 Male connector.



DB9 Male to DB9 Female Low Profile Null Modem Adapter (Part# DB113)

DB9 Male to DB9 Female Low Profile Null Modem Adapter.



DB9 Female to DB9 Male - Serial Surge Suppressor (Part# SS-DB9)

User configurable for use with male or female DB9 ports, the SS-DB9 protects all 9 lines, plus D shell chassis. Convenient DB9 input and output connects directly to the protected port, obtaining a ground outlet from the computer chassis. Surge suppression is handled with balanced arrays of high-speed avalanche diodes that divert excess energies created by electrostatic discharges, faulty wiring, or lightning away from network interface connections.



Product Family

Whether you require one serial port or 16, SeaLINK USB serial adapters will have you quickly communicating with RS-232, RS-422, and RS-485 peripherals. Unlike traditional UART-based devices, SeaLINK USB products use a state-machine architecture that reduces host processor overhead for faster, more reliable communications. Sealevel's SeaCOM software drivers and utilities make installation and operation easy using Windows, and most Linux operating systems already have the required drivers built in.

Part #	Description
2105R	USB to 1-Port RS-232 DB9 Serial Interface Adapter (USB Type A)
2105R-C	USB to 1-Port RS-232 DB9 Serial Interface Adapter (USB Type C)
2106	USB to 1-Port RS-422 DB9 Serial Interface Adapter
2113	USB to 1-Port RS-232, RS-422, RS-485 DB9 Serial Interface Adapter
2123	USB to 1-Port RS-232, RS-422, RS-485 (Software Configurable) DB9 Serial Interface Adapter
2101	USB to 1-Port RS-232 DB25 Serial Interface Adapter
2102	USB to 1-Port RS 422, RS-485, RS-530 DB25 Serial Interface Adapter
2103	USB to 1-Port Isolated RS-232 DB25 Serial Interface Adapter
2104	USB to 1-Port RS 422, RS-485, RS-530 DB25 Serial Interface Adapter
2108	Embedded USB to 1-Port RS-232 DB9 Serial Interface Adapter with Low Profile PC Bracket
2128	Embedded USB to 1-Port RS-232, RS-422, RS-485 (Software Configurable) DB9 Serial Interface Adapter with PC Bracket
2213	USB to 2-Port Isolated RS-232, RS-422, RS-485 DB9 Serial Interface Adapter
2223	USB to 2-Port RS-232, RS-422, RS-485 (Software Configurable) DB9 Serial Interface Adapter
2201	USB to 2-Port RS-232 DB9 Serial Interface Adapter
2202	USB to 2-Port RS-422, RS-485 DB9 Serial Interface Adapter
2203	USB to 2-Port RS-232, RS-422, RS-485 DB9 Serial Interface Adapter
2208	Embedded USB to 2-Port RS-232 DB9 Serial Interface Adapter with Standard Size PC Bracket
2228	Embedded USB to 2-Port RS-232, RS-422, RS-485 (Software Configurable) DB9 Serial Interface Adapter with PC Bracket
2401	USB to 4-Port RS-232 DB9 Serial Interface Adapter
2402	USB to 4-Port RS-422, RS-485 DB9 Serial Interface Adapter
2403	USB to 4-Port RS-232, RS-422, RS-485 DB9 Serial Interface Adapter
2404	USB to 4-Port RS-232 RJ45 Serial Interface Adapter
2407	USB to 4-Port RS-232, RS-485 RJ45 VersaCom Serial Interface Adapter
2423	USB to 4-Port RS-232, RS-422, RS-485 (Software Configurable) DB9 Serial Interface Adapter

2433	USB to 4-Port RS-232, RS-422, RS-485 (Software Configurable) DB9 Serial Interface Adapter
641U	USB to RS-232 RJ45 Serial Interface Adapter
647U	USB to RS-232, RS-485 RJ45 VersaCom Serial Interface Adapter
2801	USB to 8-Port RS-232 DB9 Serial Interface Adapter
2802	USB to 8-Port RS-422, RS-485 DB9 Serial Interface Adapter
2803	USB to 8-Port RS-232, RS-422, RS-485 DB9 Serial Interface Adapter
2804	USB to 8-Port RS-232 RJ45 Serial Interface Adapter
2807	USB to 8-Port RS-232, RS-485, RJ45 VersaCom Serial Interface Adapter
2823	USB to 8-Port RS-232, RS-422, RS-485 (Software Configurable) DB9 Serial Interface Adapter
2833	USB to 8-Port RS-232, RS-422, RS-485 DB9 Serial Interface Adapter
681U	USB to RS-232 RJ45 Serial Interface Adapter
687U	USB to RS-232, RS-485 RJ45 VersaCom Serial Interface Adapter
2161	USB to 16-Port RS-232 RJ45 Serial Interface Adapter
2167	USB to 16-Port RS-232, RS-485 RJ45 VersaCom Serial Interface Adapter
2108S	Embedded USB to 1-Port RS-232 DB9 Serial Interface Adapter with Standard Size PC Bracket
2123-OEM	USB to 1-Port RS-232, RS-422, RS-485 (Software Configurable) DB9 Serial Interface Adapter
2223-KT	USB to 2-Port RS-232, RS-422, RS-485 (Software Configurable) DB9 Serial Interface Adapter
2223-OEM	USB to 2-Port RS-232, RS-422, RS-485 (Software Configurable) DB9 Serial Interface Adapter
641U-OEM	USB to RS-232 RJ4 Serial Interface Adapter
647U-OEM	USB to RS-232, RS-485 RJ45 VersaCom Serial Interface Adapter
681U-OEM	USB to RS-232 RJ45 Serial Interface Adapter
687U-OEM	USB to RS-232, RS-485 RJ45 VersaCom Serial Interface Adapter
2106-RoHS	RoHS Compliant USB to 1-Port RS-422 DB9 Serial Interface Adapter
2102-RoHS	RoHS Compliant USB to 1-Port RS-422, RS-485, RS-530 DB25 Serial Interface Adapter
2201-RoHS	RoHS Compliant USB to 2-Port RS-232 DB9 Serial Interface Adapter
2203-RoHS	RoHS Compliant USB to 2-Port RS-232, RS-422, RS-485 DB9 Serial Interface Adapter

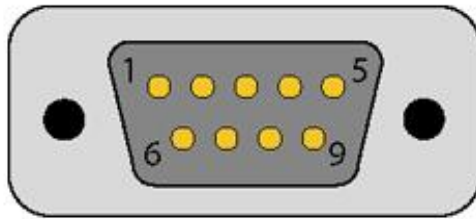
2401-RoHS	RoHS Compliant USB to 4-Port RS-232 DB9 Serial Interface Adapter
2403-RoHS	RoHS Compliant USB to 4-Port RS-232, RS-422, RS-485 DB9 Serial Interface Adapter
2801-RoHS	RoHS Compliant USB to 8-Port RS-232 DB9 Serial Interface Adapter
2404-RoHS	RoHS Compliant USB to RS-232 RJ45 Serial Interface Adapter for Powering 5VDC Serial Peripherals
2402-DC12	RoHS Compliant USB to RS-232 RJ45 Serial Interface Adapter for Powering 12VDC Serial Peripherals
2404-DC24	USB to RS-232 RJ45 Serial Interface Adapter for Powering 24VDC Serial Peripherals
2407-DC05	USB to 4-Port RS-232, RS-485 RJ45 VersaCom Serial Interface Adapter for Powering 5VDC Serial Peripherals
2407-DC12	USB to 4-Port RS-232, RS-485 RJ45 VersaCom Serial Interface Adapter for Powering 12VDC Serial Peripherals
2407-DC24	USB to 4-Port RS-232, RS-485 RJ45 VersaCom Serial Interface Adapter for Powering 24VDC Serial Peripherals
2804-DC05	USB to 8-Port RS-232 RJ45 Serial Interface Adapter for Powering 5VDC Serial Peripherals
2804-DC12	USB to 8-Port RS-232 RJ45 Serial Interface Adapter for Powering 12VDC Serial Peripherals
2804-DC24	USB to 8-Port RS-232 RJ45 Serial Interface Adapter for Powering 24VDC Serial Peripherals
2807-DC05	USB to 8-Port RS-232, RS-485 RJ45 VersaCom Serial Interface Adapter for Powering 5VDC Serial Peripherals
2807-DC12	USB to 8-Port RS-232, RS-485 RJ45 VersaCom Serial Interface Adapter for Powering 12VDC Serial Peripherals
2807-DC24	USB to 8-Port RS-232, RS-485 RJ45 VersaCom Serial Interface Adapter for Powering 24VDC Serial Peripherals

Electrical Specifications

The SeaLINK+232-DB9 utilizes a USB UART. This chip features programmable baud rate, data format, 128-byte RX buffer, and 256-byte RX buffer. The RS-232 transceiver supports data rates from 300 baud up to 921.6K baud. Refer to [Appendix C](#) for cable length limitations.

Connector Pin Out

RS-232 (DB-9 Male)



Pin #	Signal	Name	Mode
1	DCD	Data Carrier Detect	Input
2	RXD	Receive Data	Input
3	TXD	Transmit Data	Output
4	DTR	Data Terminal Ready	Output
5	GND	Ground	
6	DSR	Data Set Ready	Input
7	RTS	Request To Send	Output
8	CTS	Clear To Send	Input
9	RI	Ring Indicator	Input



These assignments meet EIA/TIA/ANSI-574 DTE specifications for DB9 type connectors. Please terminate any control signals that are not going to be used. The most common way to do this is to connect RTS to CTS and RI. Also, connect DCD to DTR and DSR. Terminating these pins, if not used, will help ensure you get the best performance from your adapter.

Technical Specifications

Environmental Specifications

Specification	Operating	Storage
Temperature Range	0° to 70° C (32° to 158° F)	-50° to 105° C (-58° to 221° F)
Humidity Range	10 to 90% R.H. Non-Condensing	10 to 90% R.H. Non-Condensing

Power Requirements

Supply line	+5 VDC
Rating	100 mA

Manufacturing

All Sealevel Printed Circuit boards are built to UL 94V0 rating and are 100% electrically tested. These printed circuit boards are solder mask over bare copper or solder mask over tin nickel.

Hardware Configuration

Ruggedized Overmold Enclosure

The SeaLINK+232-DB9 is built for harsh conditions and features a military-grade, ruggedized, overmolded enclosure. This improves the reliability and durability in industrial and mobile applications.

DB9M Serial Connector

The SeaLINK+232-DB9 includes a DB9 male serial connector on one end of the device. The pin assignments for this connector are detailed in the previous Electrical Specifications section.

Status LEDs

A pair of status LEDs indicate:

Tx (Red) – Light when data is being transmitted

Rx (Green) – Light when data is being received

Attached USB Cable

The attached cable has a clear jacket over a braided shield. The cable is approximately 44” overall with a USB Type A connector or USB Type C connector (for type 2105R-C), which is compatible with any available USB port on a host computer or USB hub. Self-powered hubs can be used as long as they provide a minimum of 100mA to each USB port. The SeaLINK+232-DB9 is compatible with USB 2.0 ports and is USB 1.1 compliant.



Installation

Seacom Software Installation

Windows Installation



Do not connect the device to a USB port until the software has been fully installed.

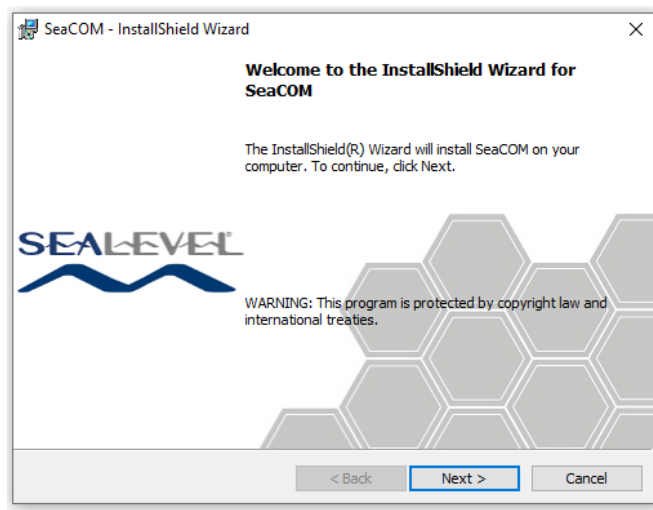


To install Sealevel software, you must log in as an administrator or have administrator privileges in Windows.



Only users running Windows 10 or newer should utilize these instructions for accessing and installing the appropriate driver via Sealevel's website. If you are utilizing an operating system prior to Windows 10, please contact Sealevel by calling 864.843.4343 or emailing support@sealevel.com to receive access to the proper driver download and installation instructions.

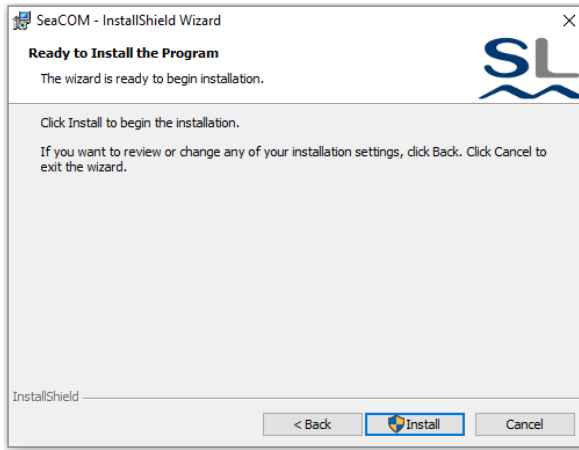
1. Go to the "Support Center" tab and open the "Software Drivers" from the drop down on the sealevel.com website and select the SeaCOM drivers located on the Support Center page or use provided link: [Sealevel software driver database](#).
2. Download the current version of "SeaCOM for Windows".
3. Install the newly downloaded SeaCOM driver.exe file.



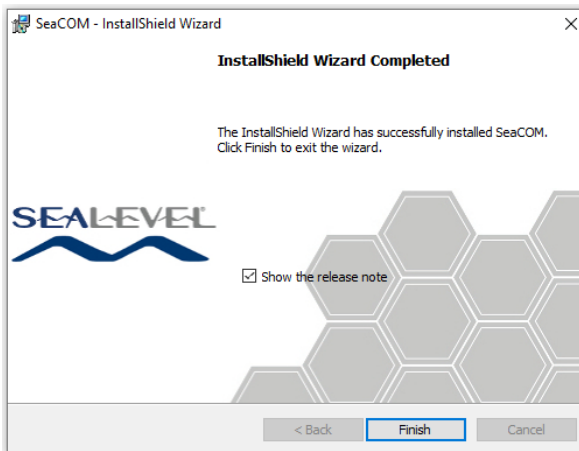
4. Agree to License Agreement:



5. Follow prompt to install:



6. The software is now installed, click 'Finish' to complete the installation of your hardware.



Linux Installation



You MUST have root privileges to install the software and drivers.



The syntax is case sensitive.

SeaCOM for Linux can be downloaded here: <https://www.sealevel.com/support/software-seacom-linux/>. It includes the **README** and the **Serial-HOWTO** help files (located at `seacom/dox/howto`). This series of files both explains typical Linux serial implementations and informs the user about Linux syntax and preferred practices.



User can use a program such as 7-Zip to extract the tar.gz file.

In addition, the software selectable interface settings can be accessed by referencing **seacom/utilities/2105Rmode**.

For additional software support, including QNX, please call Sealevel's Technical Support, (864) 843-4343. Our technical support is free and available from 8:00 AM - 5:00 PM Eastern Time, Monday through Friday. For email support contact: support@sealevel.com.

Upgrading to the current SeaCOM driver

1. Download the current driver using the Instructions from the Installation section above. Please take note of the destination directory it will save to.
2. Uninstall the currently loaded driver SeaCOM driver found in the Apps and features.
3. Navigate to the Device Manager and remove the Sealevel adapter by right clicking on the line item choosing 'Uninstall.' Depending on your product, it can be found under either 'Multiport Serial adapters' or 'Universal Serial Bus controllers.'
4. Single port ISA cards and PCMCIA cards will need to be uninstalled under "Ports (COM & LPT)."
5. In the Device Manager under 'Action,' choose "Scan for Hardware changes". This will prompt the installation of the adapter and associate it with the newly installed SeaCOM driver.
6. Proceed with the hardware installation of your SeaLINK USB serial adapter.



Windows NT is not USB aware, and thus, it cannot support this device.

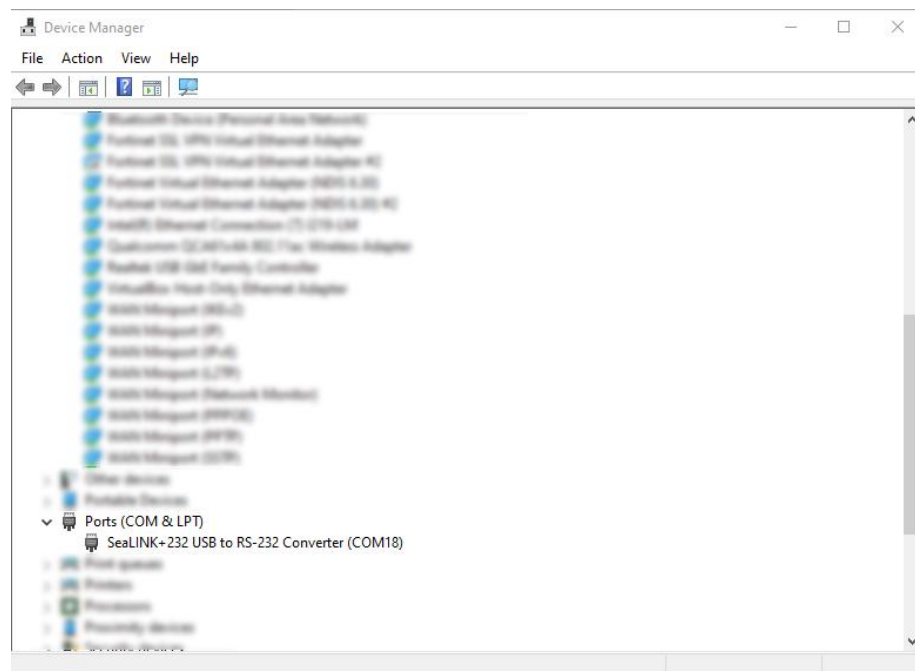
Hardware Installation

The SeaLINK+232-DB9 can be connected to any Upstream Type “C” if using the USB 2105R-C or into any Type “A” Upstream port when using the 2105R USB device on the PC host or an Upstream Hub. Since it is hot pluggable, there is no need to power down your computer prior to installation. The SeaLINK+232-DB9 requires no user hardware configuration. Once you have installed the software simply plug the USB connector into an available USB port. The drivers that were installed during setup will automatically be used to configure the adapter.

Windows 10 or newer

The following instructions are applicable to the Windows 10 operating system and may vary depending on your version of Windows.

1. After the software installation is complete, plug the SeaLINK+232-DB9 into an available USB A when using 2105R or USB C when using 2105R-C port on the computer or USB hub.
2. The SeaLINK+232-DB9 will install and now show in Device Manager under the Ports tab as 'SeaLink+232 USB Converter (COM#)'.

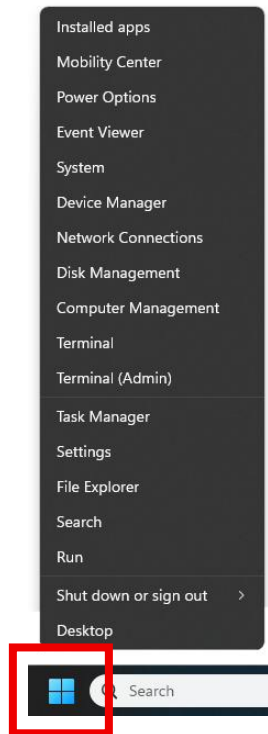


Verifying Installation

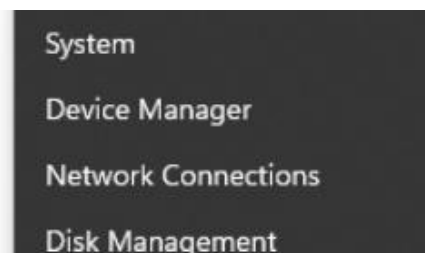
To confirm that the serial port has been successfully installed, look in Device Manager under 'Ports (COM & LPT)' and the COM assignment will be included with the associated COM number in parentheses.

To access Device Manager, follow the steps below:

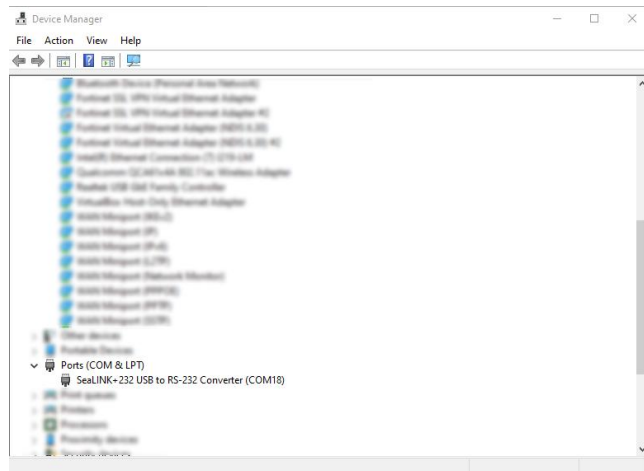
1. Right click the "Windows Start" icon on the bottom left of the task bar.



2. Locate and select "Device Manager" in the menu provided.



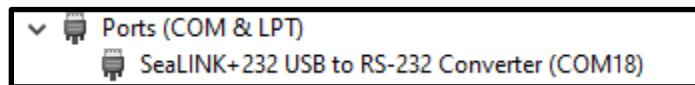
3. In the “Device Manager” window, expand the ‘Ports (COM & LPT)’ section.



4. You should now see the COM assignment with the associated COM number in parentheses.



Your system will assign the next available COM number, which will vary by computer (COM18 as shown in this example).



Uninstall & Upgrade Instructions

The SeaCOM software program adds entries to the system registry that are necessary for specifying the operating parameters for your device. To completely remove the hardware and associated software, follow the steps in the order that they appear.

To upgrade to the latest version of SeaCOM, follow the instructions to uninstall the hardware and software, followed by the upgrade instructions.

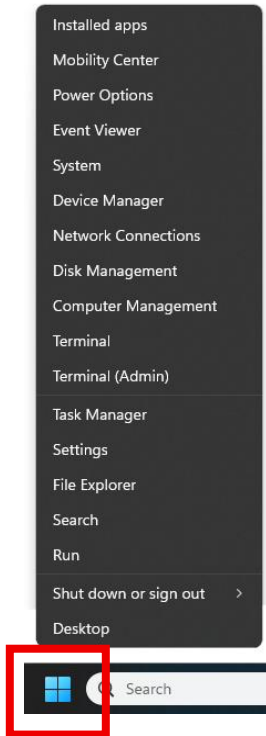


Start with the hardware connected to a USB port. Do not unplug it until instructed to do so.

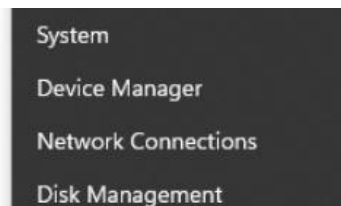
Remove Hardware Using Device Manager

To access Device Manager, follow the steps below:

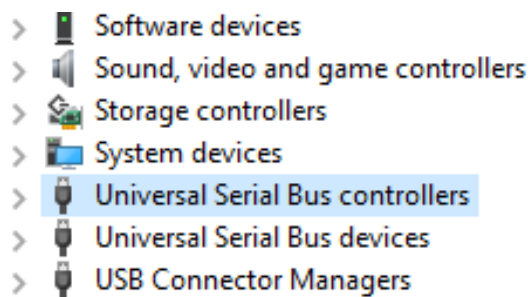
1. Right click the “Windows Start” icon on the bottom left of the task bar.



2. Locate and select “Device Manager” in the menu provided.



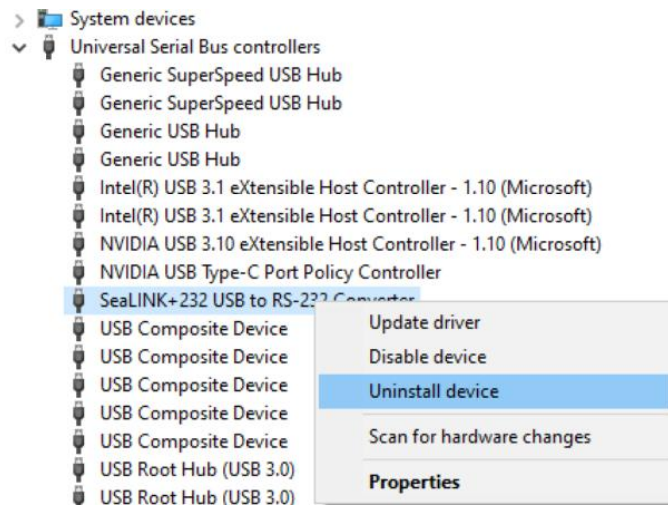
3. Locate the ‘Universal Serial Bus Controllers’ tab in “Device Manager.”



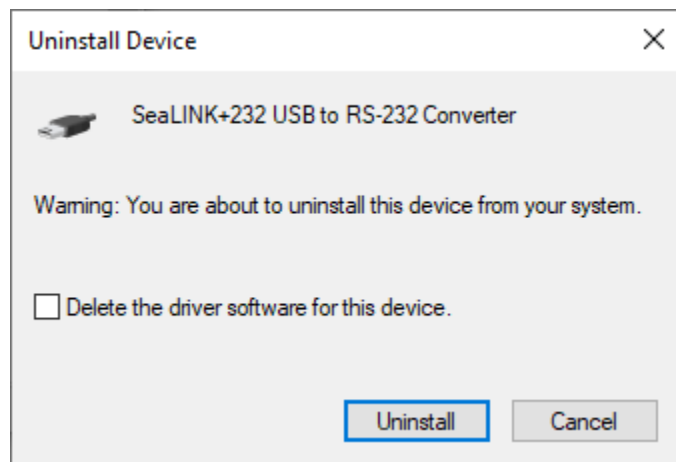
4. Locate the SeaLINK device under the 'Universal Serial Bus Controllers' tab.



5. Right click on the entry for the SeaLINK device and click 'Uninstall' in the fly out menu.



6. Confirm that you want to uninstall the SeaLINK device by clicking the 'OK' button. This will remove the hardware and all registry entries from your computer. Keep the device plugged in.

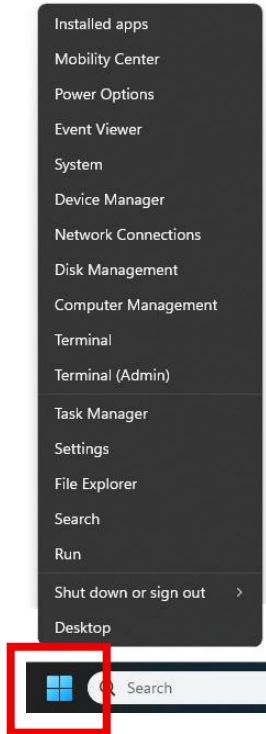


7. The window will refresh and the entry for the SeaLINK device will no longer appear. Proceed with removing the software on the following pages.

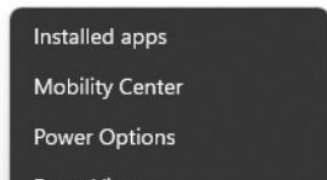
Remove Software Using Control Panel

Make sure you have first removed the hardware using the instructions above before removing the software, otherwise remnants of the configuration settings will be left on your system. Keep the SeaLINK device plugged in until the software has been completely uninstalled.

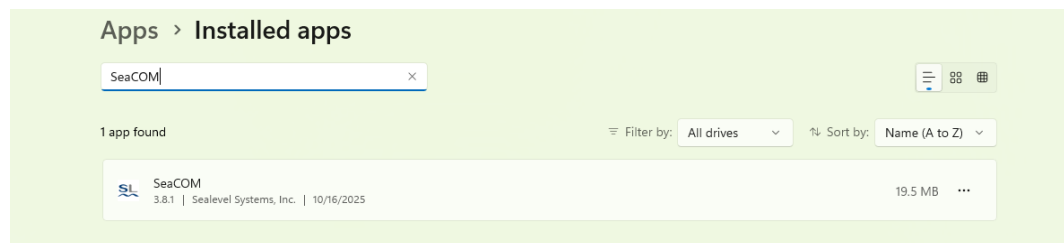
1. Right click the “Windows Start” icon on the bottom left of the task bar.



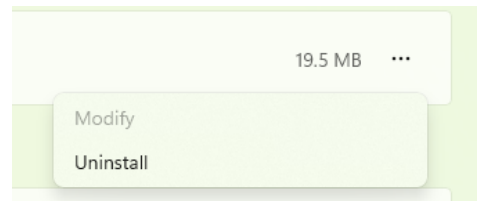
2. Locate and select “Installed apps” in the menu provided.



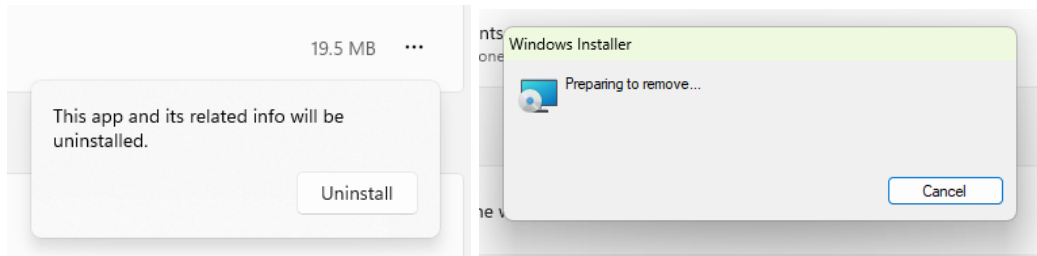
3. Type 'SeaCOM' in the 'Installed apps' page and select 'SeaCOM' app from the list.



- Click the 'Three dots' button on the 'SeaCOM' app and select Uninstall from the drop down menu.



- The 'SeaCOM' – 'Uninstall' button will appear along with a dialog box asking you to confirm. Click uninstall again.



- When the removal process completes, click the 'Finish' button to close the window. A dialog box appears to confirm the removal success. Click the 'Ok' button on the dialog box.

Appendix A - Handling Instructions

ESD Warnings

ELECTROSTATIC DISCHARGES (ESD)

A sudden electrostatic discharge can destroy sensitive components. Proper packaging and grounding rules must therefore be observed. Always take the following precautions:

1. Transport boards and cards in electrostatically secure containers or bags.
2. Keep electrostatically sensitive components in their containers, until they arrive at an electrostatically protected workplace.
3. Only touch electrostatically sensitive components when you are properly grounded.
4. Store electrostatically sensitive components in protective packaging or on anti-static mats.

GROUNDING METHODS

The following measures help to avoid electrostatic damages to the device:

1. Cover workstations with approved antistatic material. Always wear a wrist strap connected to a properly grounded workplace.
2. Use antistatic mats, heel straps, and/or air ionizers for more protection.
3. Always handle electrostatically sensitive components by their edge or by their casing.
4. Avoid contact with pins, leads, or circuitry.
5. Turn off power and input signals before inserting and removing connectors or connecting test equipment.
6. Keep work area free of non-conductive materials such as ordinary plastic assembly aids and Styrofoam.
7. Use field service tools such as cutters, screwdrivers, and vacuum cleaners that are conductive.

Appendix B – Troubleshooting

The adapter should provide years of trouble-free service. However, in the event that it appears to be functioning incorrectly, the following tips can eliminate most common problems without the need to call Technical Support.

Ensure that the Sealevel Systems SeaCOM software has been installed on the machine, so that the necessary files are in place to complete the installation. To confirm installation, click on the Windows 'Start' button and then select 'All Programs.' You should see the 'SeaCOM' program folder listed.

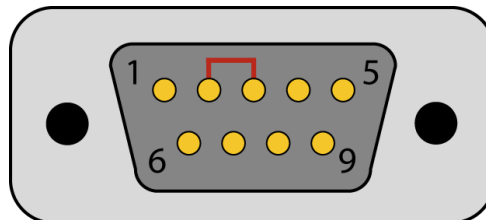
Check to make sure that USB support is enabled and functioning properly in the operating system. The presence of the 'Universal Serial Bus controllers' listing in Device Manager will confirm that USB support is enabled in Windows 10 or higher operating systems.

While Device Manager is open, locate the COM ports (described under 'Verifying Installation' in the Installation and Configuration section of this manual).

Locate the COM ports for your device in Device Manager (described under 'Verifying Installation' in the Installation and Configuration section of this manual).

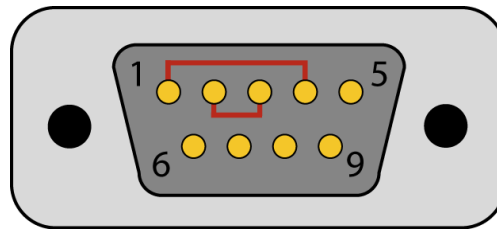
Troubleshooting/Verification for Asynchronous Serial Products

1. Once you have confirmed that the serial adapter COM ports are listed in Device Manager, use the Sealevel WinSSD utility to verify communications. Detailed help is included in the WinSSD utility.
2. Please set the adapter's Electrical Interface for either RS-232 or RS-422.
3. If you have a loopback plug, put it on the adapter connector. If you do not have a loopback plug, you can use female jumper wires to make the connection to verify the functionality.
4. RS-232 requires pins 2 (Receive) & 3 (Transmit) to be jumpered as shown in this graphic:

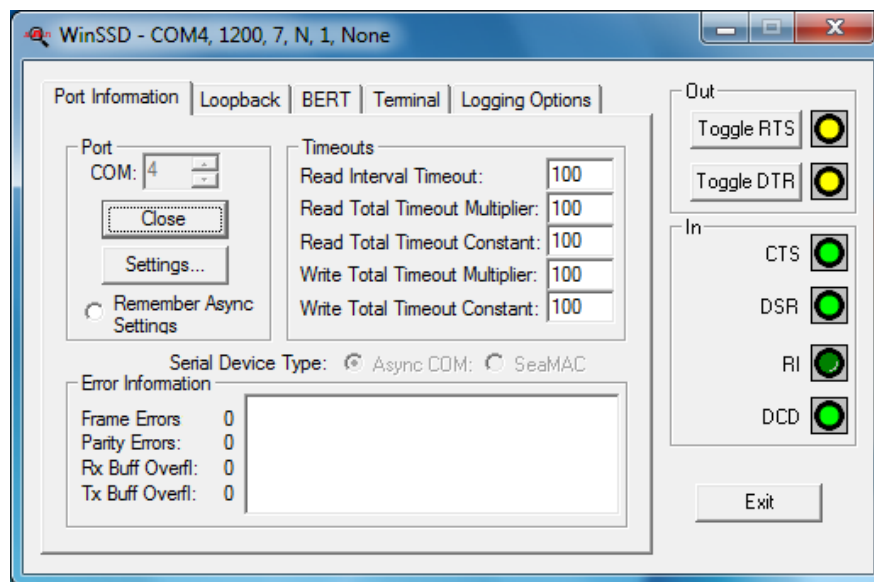


If you do not have a loopback plug or jumper wires handy, you can use a metal device, such as a knife, screwdriver, key, or paperclip, to short pins two and three.

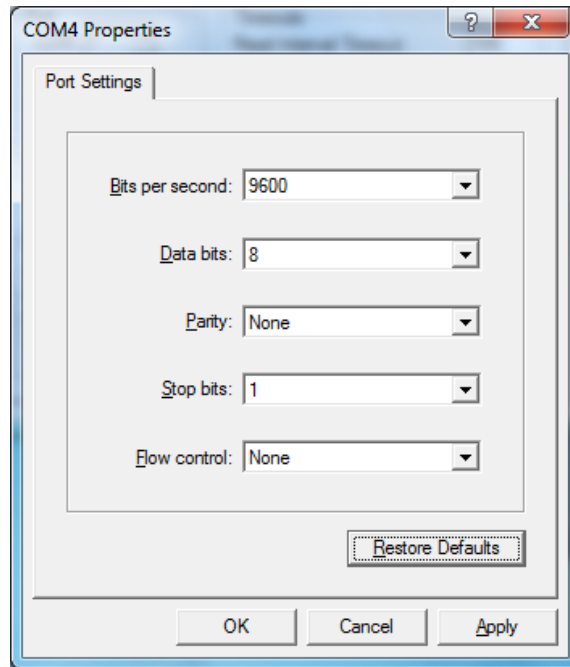
5. RS-422 requires pins 1 & 4 (Receive + and Transmit +) and also pins 2 & 3 (Receive - and Transmit -) to be jumpered as shown in this graphic:



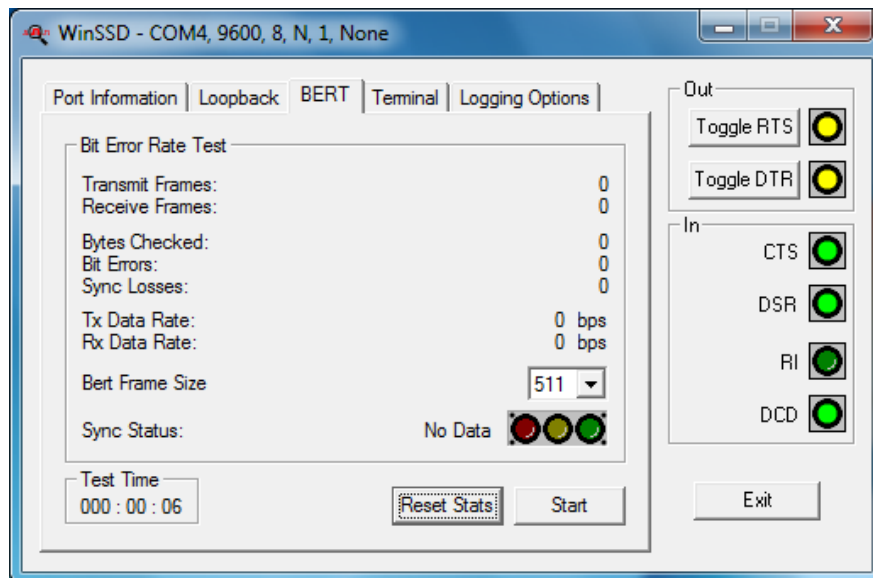
6. To test communications, launch the WinSSD utility in the SeaCOM folder in the 'Start' menu.
7. On the 'Port Information' tab, select the associated COM port and click the 'Open' button.
8. This will first open the COM port. From this tab the port can also be closed (See image below). Click the 'Settings' button to open the COM Port Properties dialog box. This will allow the Port Settings to be altered.



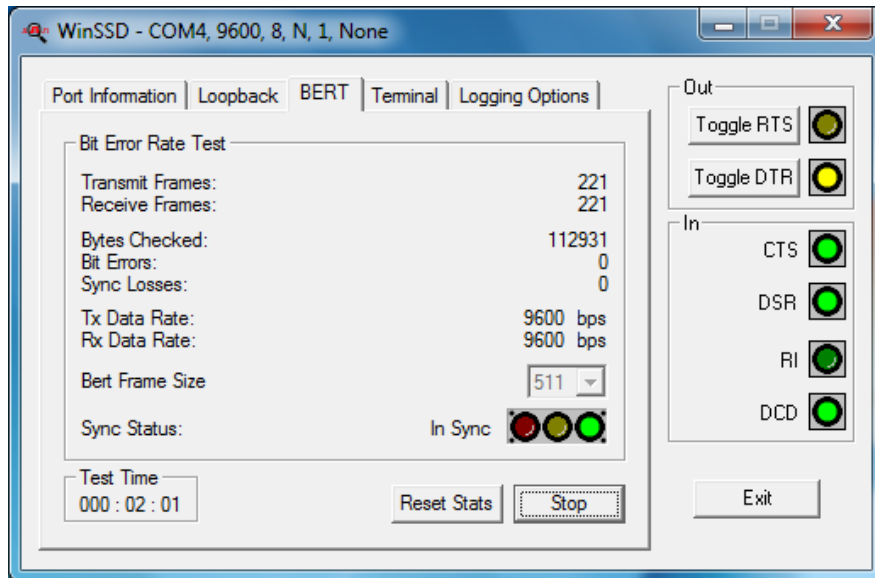
- Change your parameters to 9600 bits per second, 8 data bits, no parity, 1 stop bit, and no flow control, as pictured below.



- Click 'Apply' and 'OK.'
- In the main WinSSD window, click on the 'BERT' tab (Bit Error Rate test).
- Click on the 'Start' button.



13. If the COM port is properly working, the Sync Status green light will glow, and the Transmit Frames and Receive Frames will increase. The Tx and Rx Data Rates will show the calculated data rate.



14. This verifies that the adapter is working properly. You can continue testing this port with different configuration or proceed with testing other ports, if necessary.

If these steps do not solve your problem, please call Sealevel Systems' Technical Support, (864) 843-4343. Our technical support is free and available from 8:00 AM - 5:00 PM Eastern Time, Monday through Friday. For email support contact: support@sealevel.com.

Appendix C – Electrical Interface

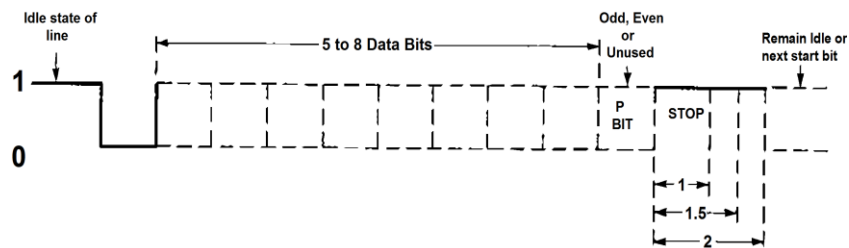
RS-232

Quite possibly the most widely used communication standard is RS-232. This implementation has been defined and revised several times and is often referred to as RS-232 or EIA/TIA-232. The IBM PC computer defined the RS-232 port on a 9-pin D-sub connector, and subsequently, the EIA/TIA approved this implementation as the EIA/TIA-574 standard. This standard is defined as the 9-Position Non-Synchronous Interface between Data Terminal Equipment and Data Circuit-Terminating Equipment Employing Serial Binary Data Interchange. Both implementations are in widespread use and will be referred to as RS-232 in this document. RS-232 is capable of operating at data rates up to 20K bps at distances less than 50 ft. The absolute maximum data rate may vary due to line conditions and cable lengths. RS-232 is a single-ended or unbalanced interface, meaning that a single electrical signal is compared to a common signal (ground) to determine binary logic states. The RS-232 and the EIA/TIA-574 specification define two types of interface circuits: Data Terminal Equipment (DTE) and Data Circuit-Terminating Equipment (DCE).

Appendix D – Asynchronous Communications

Serial data communications implies that individual bits of a character are transmitted consecutively to a receiver that assembles the bits back into a character. Data rate, error checking, handshaking, and character framing (start/stop bits) are pre-defined and must correspond at both the transmitting and receiving ends.

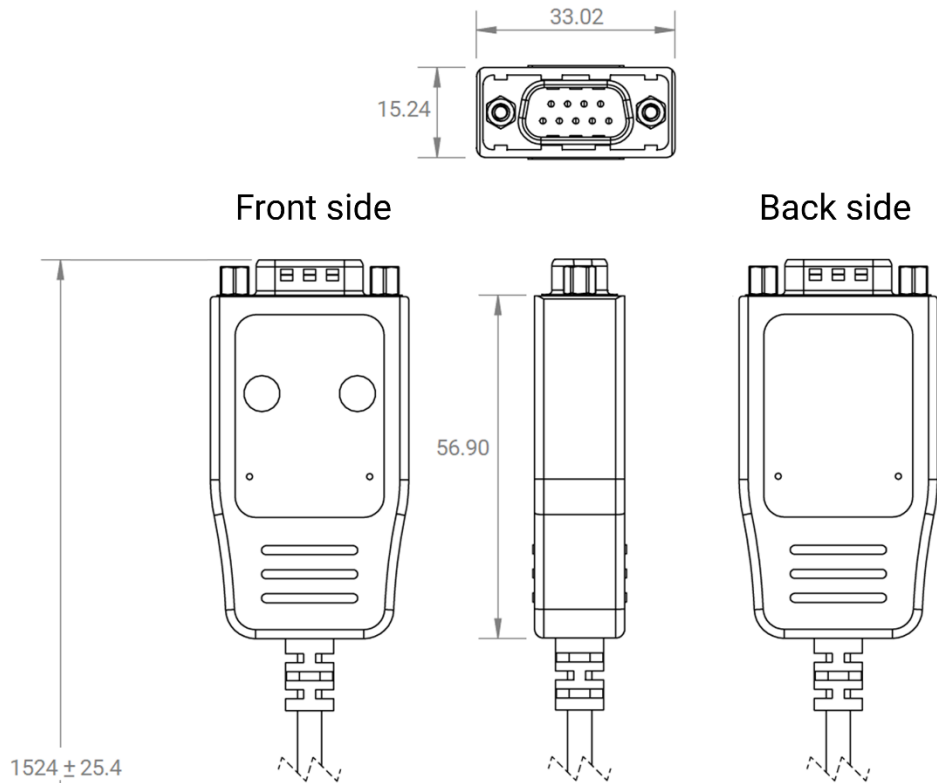
Asynchronous communications is the standard means of serial data communication for PC compatibles and PS/2 computers. The original PC was equipped with a communication or COM: port that was designed around an 8250 Universal Asynchronous Receiver Transmitter (UART). This device allows asynchronous serial data to be transferred through a simple and straightforward programming interface. A starting bit followed by a pre-defined number of data bits (5, 6, 7, or 8) defines character boundaries for asynchronous communications. The end of the character is defined by the transmission of a pre-defined number of stop bits (usually 1, 1.5 or 2). An extra bit used for error detection is often appended before the stop bits.



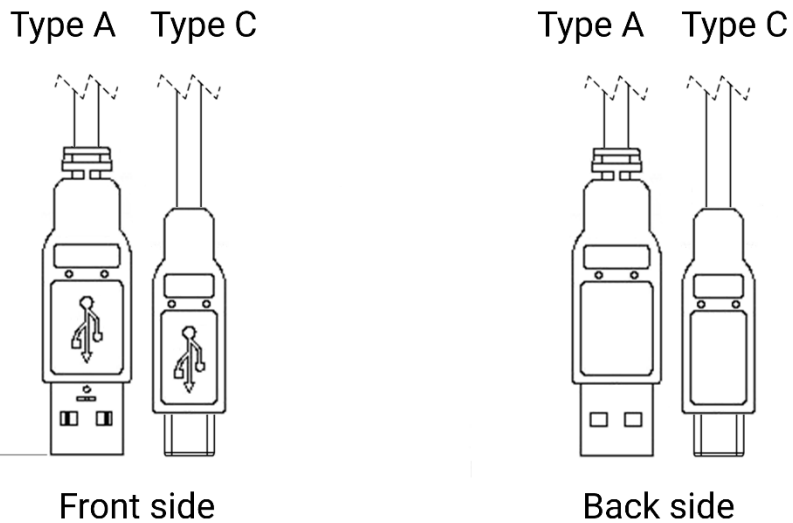
This special bit is called the parity bit. Parity is a simple method of determining if a data bit has been lost or corrupted during transmission. There are several methods for implementing a parity check to guard against data corruption. Common methods are called (E)ven Parity or (O)dd Parity. Sometimes parity is not used to detect errors on the data stream. This is referred to as (N)o parity. Because each bit in asynchronous communications is sent consecutively, it is easy to generalize asynchronous communications by stating that each character is wrapped (framed) by pre-defined bits to mark the beginning and end of the serial transmission of the character. The data rate and communication parameters for asynchronous communications have to be the same at both the transmitting and receiving ends. The communication parameters are baud rate, parity, number of data bits per character, and stop bits (i.e., 9600, N, 8, 1).

Appendix E – Cable Drawing

USB to 1-Port RS-232 DP9 Serial Interface Adapter.



Depending on which adapter cable you purchase (2105R or 2105R-C), it will either terminate with a USB Type A connector or USB Type C connector as shown below.



Appendix F – How To Get Assistance

Please refer to [Troubleshooting Guide](#) prior to calling Technical Support.

Begin by reading through the Trouble Shooting Guide in [Appendix B](#). If assistance is still needed, please see below.

When calling for technical assistance, please have your user manual and current adapter settings. If possible, please have the adapter installed in a computer ready to run diagnostics.

Sealevel Systems, Inc. provides an FAQ section on its web site. Please refer to this to answer many common questions. This section can be found at <http://www.sealevel.com/faq.asp>.

Sealevel maintains a web page on the Internet. Our home page address is www.sealevel.com. The latest software updates, and newest manuals are available via our web site.

Technical support is available Monday to Friday from 8:00 AM to 5:00 PM Eastern Time. Technical support can be reached at (864) 843-4343.

RETURN AUTHORIZATION MUST BE OBTAINED FROM SEALEVEL SYSTEMS, INC. BEFORE RETURNED MERCHANDISE WILL BE ACCEPTED. AUTHORIZATION CAN BE OBTAINED BY CALLING SEALEVEL SYSTEMS AND REQUESTING A RETURN MERCHANDISE AUTHORIZATION (RMA) NUMBER.

Appendix G – Compliance Notices

Federal Communications Commission (FCC) Statement



This equipment has been tested and found to comply with the limits for Class A digital device, pursuant to Part 15 of the FCC Rules. Operation is subject to the following two conditions: (1) This device may not cause harmful interference, and (2) this device must accept any interference received, including interference that may cause undesired operation.

ISED Canada

- **CAN ICES-003(A) / NMB-003(A)**

EMC Directive Statement



This equipment has been evaluated or tested and found in compliance with the requirements of the following directives issued by the European Commission:

- EMC Directive **2014/30/EU**
- RoHS Directive **2011/65/EU + (EU) 2015/863**



CE marking is recognized in the UK as an acceptable method of demonstrating compliance for certain categories of products, including the one described in this manual.



This is a Class A Product. In a domestic environment, this product may cause radio interference in which case the user may be required to take adequate measures to prevent or correct the interference.



Always use cabling provided with this product if possible. If no cable is provided or if an alternate cable is required, use high quality shielded cabling to maintain compliance with FCC/EMC directives.

Warranty

Sealevel's commitment to providing the best I/O solutions is reflected in the Lifetime Warranty that is standard on all Sealevel manufactured I/O products. We are able to offer this warranty due to our control of manufacturing quality and the historically high reliability of our products in the field. Sealevel products are designed and manufactured at its Liberty, South Carolina facility, allowing direct control over product development, production, burn-in and testing. Sealevel achieved ISO-9001:2015 certification in 2018 and AS9100D certification in 2025.

Warranty Policy

Sealevel Systems, Inc. (hereafter "Sealevel") warrants that the Product shall conform to and perform in accordance with published technical specifications and shall be free of defects in materials and workmanship for the warranty period. In the event of failure, Sealevel will repair or replace the product at Sealevel's sole discretion. Failures resulting from misapplication or misuse of the Product, failure to adhere to any specifications or instructions, or failure resulting from neglect, abuse, accidents, or acts of nature are not covered under this warranty.

Warranty service may be obtained by delivering the Product to Sealevel and providing proof of purchase. Customer agrees to ensure the Product or assume the risk of loss or damage in transit, to prepay shipping charges to Sealevel, and to use the original shipping container or equivalent. Warranty is valid only for original purchaser and is not transferable.

This warranty applies to Sealevel manufactured Product. Product purchased through Sealevel but manufactured by a third party will retain the original manufacturer's warranty.

Non-Warranty Repair/Retest

Products returned due to damage or misuse and Products retested with no problem found are subject to repair/retest charges. A purchase order or credit card number and authorization must be provided in order to obtain an RMA (Return Merchandise Authorization) number prior to returning Product.

How to obtain an RMA (Return Merchandise Authorization)

If you need to return a product for warranty or non-warranty repair, you must first obtain an RMA number. Please contact Sealevel Systems, Inc., Technical Support for assistance:

Available	Monday – Friday, 8:00 AM to 5:00 PM EST
Phone	864-843-4343
Email	support@sealevel.com

Trademarks

Sealevel Systems, Incorporated acknowledges that all trademarks referenced in this manual are the service mark, trademark, or registered trademark of the respective company.