



# MENS CITY FIT JACKET

## RJ401M

No suit piece speaks of sophistication quite like a tailored jacket. This classic two-button jacket, with its modern silhouette, is fully lined and features functional exterior and internal pockets. Pair it with matching suit pants for a razor-sharp look you'll love to wear to work.

### DETAILS



#### RENEW **BIZECO**

77% Recycled Polyester 20% Viscose 3% Elastane  
Fabric that has been engineered to be an easy-care, machine wash-and-wear fabric with minimal creasing. Made for ease and versatility for when you are on the go.

**LINING** Stretch Polyester

#### FABRIC CARE INSTRUCTION

Machine wash in warm water at a gentle setting. Wash with like colours. Wash inside out. Only non-chlorine bleach when needed. Hang to dry away from sunlight. Do not tumble dry. Iron at medium setting. Can be dry cleaned (P)



#### COLOURS



#### GARMENT MEASUREMENTS

SIZE	87	92	97	102	107	112	117	122	127	132	137	142
1/2 CHEST (CM)	47.5	50	52.5	55	57.5	60	62.5	65	67.5	70	72.5	75

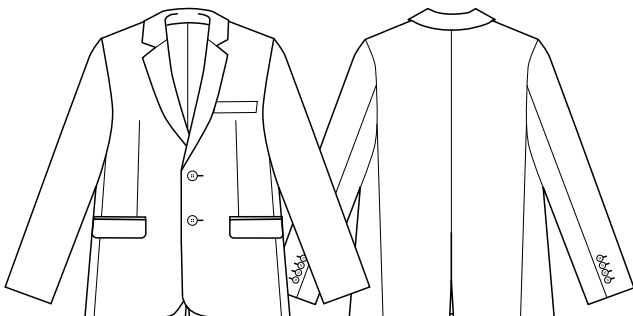
#### STYLE DETAILS

- City Fit – designed to provide some shape
- 2 button opening
- Two front jet pockets with flaps
- Center back vent
- Fully lined with internal pockets and an action pleat inside to allow for movement
- Contrast lining inside sleeve
- Internal zip for embroidery
- Cuff buttons are not functional

#### MATCH WITH

- Can be worn with casual lowers for a 'blazer' look or with matching suit lowers for a more corporate look.

### SPEC DRAWING



This garment is made from 77% recycled polyester resulting in the equivalent of 26 plastic bottles being diverted from landfill.