

# UC-PD1

## USB Power Delivery Charger



### Instruction Manual

Thank you for purchasing the UC-PD1. The UC-PD1 is the charger which supports USB PD (Power Delivery) function. We strongly recommend reading this Instruction Manual on how to best use the UC-PD1. Please keep this manual for your reference. If you have any additional questions, please contact your local IDX office listed at the end of this manual.

#### ⚠ WARNING

##### May cause sudden serious injury and death

- Do not connect to an AC power source that exceeds the voltage specification stated on the unit.
- Use only with the compatible batteries listed in this manual.
- Do not short the contact pins with any metal object.
- Do not carry or store with metal equipment.
- Do not immerse in water.
- Do not attempt to open the outer casing or break apart.
- Do not subject the unit to extreme physical impact or pressure, or place any object across the terminals that could cause it to short.
- Do not attempt to use if damaged.
- Protect the power cord from any damage.
- Please don't use the charger which has damages on the cable and connector is deformed.

#### ⚠ CAUTION

##### May cause sudden serious injury and death

- Use the approved power cord / appliance connector / plug conforming to the proper ratings (voltage, ampere) and safety regulations of each country if applicable.
- Keep the unit away from excessively dry or humid environments.
- Stop charging immediately if the charging does not complete within the designated time.
- In case of abnormal smell, leak, color change or case deformity during use, turn the power off and unplug the cable from the socket to avoid possible injury.
- Do not carry the charger while the battery is attached.
- Do not charge the battery while the battery is used with equipments.
- Do not charge the battery while the battery is charged from other charger.

#### Features

- IDX Lithium-ion batteries equipped with USB PD can be charged.
- Supports USB PD with max. 65W. The output voltage is switched automatically when connecting the battery and it enables to charge the battery with appropriate voltage.
- AC plug can be folded and stored.
- POWER LED lights when connecting the AC plug to the outlet.

#### Operating Instructions

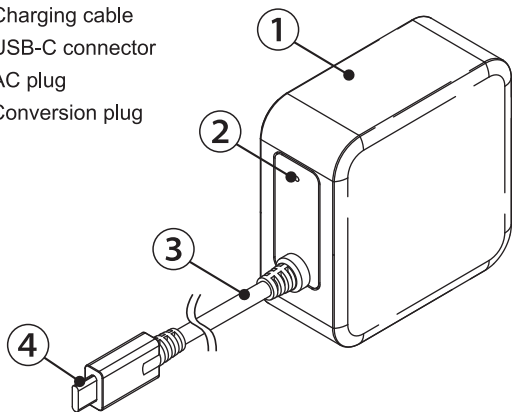
1. Connect the AC plug to the outlet.
2. Start charging automatically when plugging USB-C connector into IDX Battery equipped with USB PD.
3. Remove the connector after charging.

#### Specifications

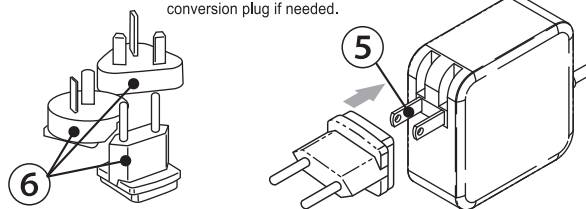
- Recommended batteries : IDX V-Mount Lithium Ion batteries equipped with USB PD
- Input voltage : AC100V~240V 50 / 60Hz Automatic
- Output voltage : 1DC5V/3A, DC9V/3A, DC12V/3A, DC15V/3A, DC20V/3.25A (MAX 65W)
- DC Connector : USB Type-C
- Operating temperature : 0~40°C / 32~104°F
- Operating humidity : 5%~90% RH
- Protection circuit : Over-voltage, Over-current, Short circuit
- Dimensions : approx. 68 ( W )×68 ( H )×30.5 ( D )mm  
approx. 2.67 ( W )×2.67 ( H )×1.2 ( D ) inches
- Cable length : approx. 1.2m approx. 47.24inches  
Weight : approx. 219g / 0.48lbs
- Charge time standard : For the latest charging time information, please visit our website ( <http://www.idxtek.com/charging-times> )

#### Location and Function of Parts

- ① Body
- ② Power LED
- ③ Charging cable
- ④ USB-C connector
- ⑤ AC plug
- ⑥ Conversion plug



Please use with conversion plug if needed.



#### ⚠ CAUTION

- Charging with USB Power Delivery requires to connect the equipment which supports USB Power Delivery.
- The output voltage is switched automatically when connecting the battery.
- Please insert the USB-C connector firmly. Start charging automatically when plugging USB-C connector into IDX Battery equipped with USB PD.
- Please check the charging status by pressing LED check button on the connected battery.
- Please be careful as the charger may heat up during charging.
- Not all the products that equipped with USB can be charged. Please note that you may not be able to use this charger with these products.

\* Design and specifications are subject to change without notice.

\* USB Type-C® and USB-C® are trademarks or registered trademark of USB Implementers Forum companies.

**Manufacturer** : IDX Company, Ltd. 6-28-11 Shukugawara, Tama-ku, Kawasaki-shi, Kanagawa-ken, 214-0021 Japan  
Tel : +81-44-850-8801 Fax : +81-44-850-8838 URL : <https://www.idx.tv/> E-mail : [idx.japan@idx.tv](mailto:idx.japan@idx.tv)  
**Importer for EU** : IDX Technology Europe, Ltd. Unit 9, Langley Park, Waterside Drive, Langley, Berkshire SL3 6AD, England  
Tel : +44-1753-547692 Fax : +44-1753-546660 URL : <http://www.idx-europe.co.uk/> E-mail : [idx.europe@idx.tv](mailto:idx.europe@idx.tv)  
**Importer for USA** : IDX System Technology, Inc. 2377 Crenshaw Blvd, Suite 154, Torrance CA 90501 USA  
Tel : +1-310-328-2850 Fax : +1-310-328-8202 URL : <http://www.idxtek.com/> E-mail : [idx.usa@idx.tv](mailto:idx.usa@idx.tv)

