

A-CWS-TX

Battery adapter

CAM ~ WAVE

Instruction Manual

Thank you for purchasing the A-CWS-TX. The A-CWS-TX is a battery adapter for supplying a power for CW-1 TX. Prior to use the A-CWS-TX, IDX recommends to read this Instruction Manual on how to best use of A-CWS-TX and keep this manual for your reference.

Features

- A battery adapter is designed to be used with SONY L series 7.2V battery.
- Down converted DC5V outputs through USB connector.
- Can be mount on either of accessory shoe or 1/4-20 inches screw hole on the camera by flipping the mounting unit.

* Refer the CW-1 operation manual when setting the CW-1 and adapter.

Specifications

- Output voltage : DC5V
- Input voltage : DC9V~6.5V
- Dimension : 112(W) x 72(H) x 89(D)mm
4.41(W) x 2.84(H) x 3.51(D)inches
- Weight : approx 200g / 0.44lbs
- Accessory : Instruction Manual x1, Mounting unit x1

SAFETY INSTRUCTIONS

To use this product safely and correctly, please follow the safety precautions set out below. Product misuse may cause fire, shock, injury, product failure or other hazards. Please read this manual before using your CW-1 and retain for future reference.

CAUTION

- Do not attempt to open or modify this unit. All work should be carried out by IDX authorized service personnel only.
- Do not use with unspecified equipments as it may cause unexpected defect, damage or other incidents. Please read this Instruction Manual carefully before use.
- All the cables connect to the adapter should handle carefully otherwise it will damage to the cable and/or connector.
- When mount a battery to the adapter, be sure to attach firmly. If it is not attached properly, it may result in drop or damage of battery and this may cause of injury or damage for adapter.
- Do not expose or use the unit in direct sunlight, extreme dust, water or other hazardous environments.
- Do not short the pins between plus (+) and minus (-). This may cause fire, electrical shock or other incidents. Stop using immediately when noticed an abnormal smell, leak, color change or cabinet deformity while using.

WARNING

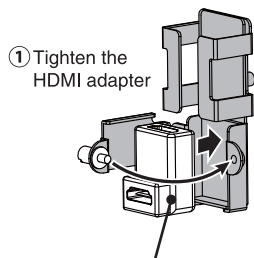
- When the system is not used, cable or battery should be removed from adapter otherwise battery life becomes short.
- If it required inspection or repair, please contact to IDX dealer or appropriate IDX office.

Recommended Battery (as of February 2013)

- SONY 7.2V Li-ion battery Pack : L series

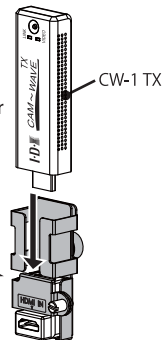
Mounting the CW-1 TX

- Set the CW-1 TX and HDMI angle adapter accordingly

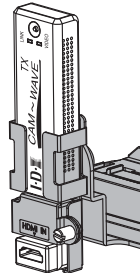


- ② Plug the CW-1 TX and HDMI adapter

* Make sure if it is connected firmly.



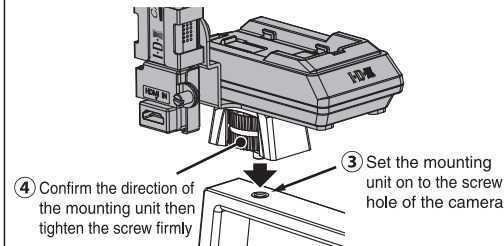
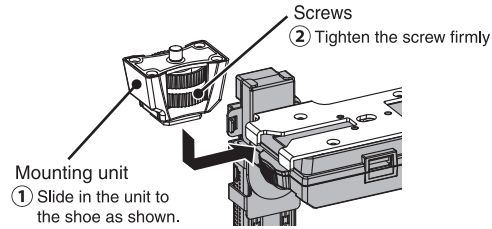
- Mounting completed



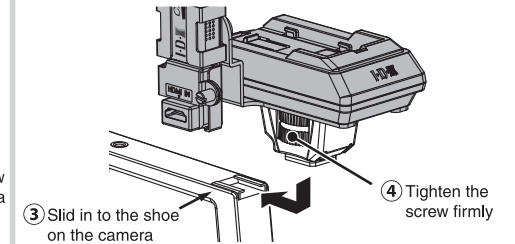
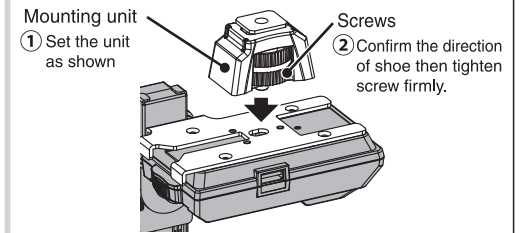
HDMI angle adapter (Supplied with CW-1)

Attach the mounting unit to adapter

- Mounting on to the 1/4-20 screw hole on the camera

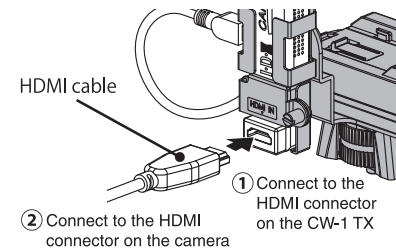


- Mounting on to the accessory shoe on the camera



Instruction for assembly

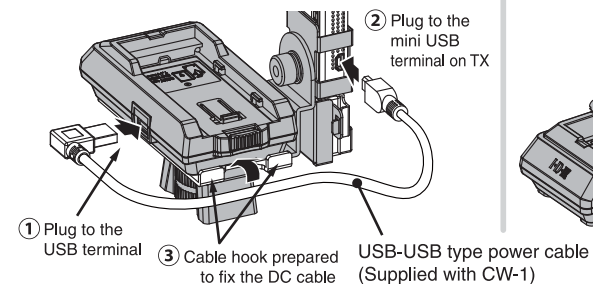
- HDMI cable connection



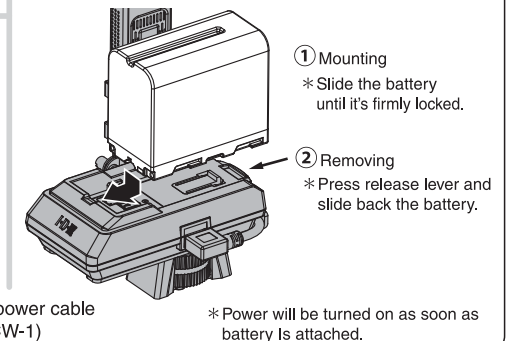
* Important notice

Size of the HDMI connector vary depend on the camera therefore HDMI-HDMI cable is not provided as a standard accessory. Please prepare the cable based on the camera been used. (Standard or Mini)

- Power cable connection



- Mounting and Removing battery



Design and specification are subject to change without notice.



<http://www.idx.tv>

IDX Company, Ltd. : 6-28-11 Shukugawara, Tamaku, Kawasaki-shi, Kanagawa-ken 214-0021 Japan

Tel : +81-44-850-8801 Fax : +81-44-850-8838 E-mail : idx.japan@idx.tv

IDX System Technology, Inc. : 19001 Harbortgate Way, Suite 105, Torrance, CA 90501 USA

Tel : +1-310-328-2850 Fax : +1-310-328-8202 E-mail : idx.usa@idx.tv

IDX Technology Europe, Ltd. : Unit 9, Langley Park, Waterside Drive, Langley, Berkshire SL3 6EZ England

Tel : +44-1753-547692 Fax : +44-1753-546660 E-mail : idx.europe@idx.tv



201302