



Free Standing Grills



Built-In Grills



Side Burners



Doors & Drawers



Sinks



Pizza Ovens



Smokers



Refrigerators



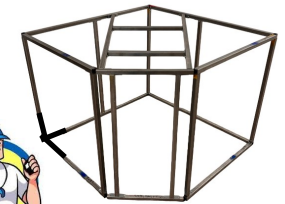
Kegeators



Stucco



BBQ COACH



DIY Frame Kits

All Prices are subject to change. Final Prices are displayed online.



1-888-534-9227

www.BBQGirls.com

All Prices are subject to change. Final Prices are displayed online.

Copyright2024BBQ GIRLS



Live Love Grill

BBQ American Cancer Society.

WE DONATE A PORTION OF YOUR SALES TO HELP FIGHT CANCER.

[Online](#)

[→ Learn More.](#)

BBQ girls



In Stock & Ready 2 Ship

Live Love Grill

At BBQ Girls we Love to Grill and we know you do to. Our team has over 20 years experience in building Outdoor Kitchens for families and friends to have amazing moments together. From gas grills to Pizza Ovens and DIY No Cut Frame Kits, we have everything you need to build the Outdoor Kitchen of your dreams. Not ready to build an Outdoor Kitchen? We also offer premium free standing grills that allow you to cook like a master chef without all the construction. No matter how you want to BBQ, Here at BBQ Girls we are happy to help you every step of the way. If you have any questions about our products or design services, we're always available to help you at 1-888-5DIYBBQ or by emailing us at BBQGirlsUSA@gmail.com

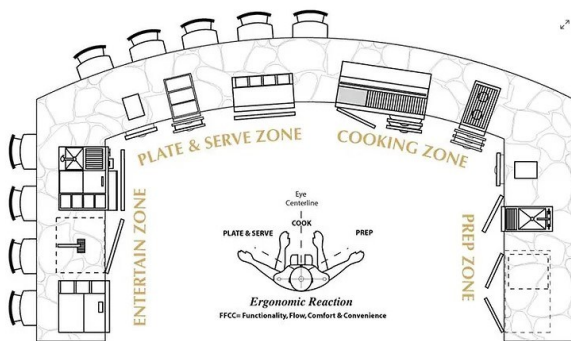
Irvine, California SHOWROOM
OPEN M-F 8am-4pm PST
SAT 9am—2pm
Sun **Closed**



Design Services

No Hassle Returns

Fast Shipping



See The Back Cover For Our FREE SHIPPING MAP



The grill is at the center of any outdoor kitchen, and TrueFlame has you covered with built-in and freestanding options. The TrueFlame Grill Series delivers top-tier performance with precision temperature control and durable stainless steel construction, ensuring every meal is perfectly cooked. Whether you opt for the built-in model for seamless integration into your outdoor kitchen design or the freestanding version for added flexibility, these grills are designed to meet the demands of both casual and serious grill enthusiasts. For those seeking a more specialized grilling experience, the TFE Grill offers advanced features like infrared burners and rotisserie capabilities. These features make it easy to prepare a wide range of dishes, from perfectly seared steaks to slow-cooked roasts, all with the convenience and reliability TrueFlame is known for.



Fire Magic Grills and products have been proudly crafted in the USA since 1937. Their true width cooking grids offer some of the largest cooking areas by square inch in their size classes, so you can cook more food at once. Get a great sear every time with their stainless-steel diamond sear cooking grids, which provide more surface contact for fast and even grilling. You can create the perfect outdoor area with Fire Magic's extensive line of grills and matching outdoor kitchen equipment.



Napoleon delivers innovative, quality products at an affordable price. A recognizable name in the grilling industry, Napoleon Grills offers a stunning line of BBQ and outdoor kitchen products that will impress. Affordable quality is the root of their stellar reputation, apparent in every product they build.



Summerset Professional Grills focuses on providing consumers with three things that are paramount in today's economy: exceptional quality, amazing value and personal service. As the outdoor kitchen trend continues to grow, Summerset has continually delivered solid, reliable products for every budget. From their complete line of BBQ island accessories to their professional stainless grills, Summerset offers a range of products to build the ultimate outdoor living experience.



Blaze grills and outdoor kitchens are made from the best materials and backed by a lifetime warranty. It's that simple. They offer premium products without the premium price tag. What's more, they outperform their competition with better designs, better materials, and better functionality, so you can count on them year after year. Effortless by design and engineered for life, Blaze grills and outdoor kitchens are intentionally uncomplicated so anyone can experience exceptional outdoor living products.

TRUE  FLAME

Voted Best Built in Grill!

BBQ GIRLS

We Don't ~~Price Match~~

We Beat The Price!

**BEST
PRICE**



Call 4 Best Price!

At BBQ Girls we know you have a lot of choices where you buy your Grill & Outdoor Kitchen Equipment. We appreciate your business and will make every effort to give you the best service & price! Just send us a link to the exact item(s) you want to buy from another online retailer like BBQ Guys or BBQGrills.com for example. And we will email you back a link with our best price just for you. No Hassle. Visit our website. Click on "Call For Best Price" found on our home page and fill out the form.



We Offer the Best Brands!



FIRE MAGIC® BRINGS OUT THE BEST IN YOUR GRILLING

Family owned and crafted in America, Fire Magic® is the name trusted by true grilling enthusiasts for over 80 years. With an extensive product line, versatile cooking options, enhanced durability and superior design innovations, Fire Magic® is the finest performing grill on the market and a shining centerpiece for a lifetime of special moments shared with family and friends.



Platinum Dealer

FREE SHIPPING

FIREMAGIC

BEST PRICE

Call Now

Get the Best Price with BBQ Girls!



All Fire Magic Grills can be customized with infrared burners at the factory.

Custom Grills are sold all sales final and take 4-6 weeks to manufacture. ALL SALES FINAL on Custom Grills

Echelon E1060i Built-In Grills



Echelon E1060i, 48" Built-In Digital Grill

E1060i-9E1N*-W (optional Magic View Window shown)

SPECIFICATIONS

- Primary cooking surface: 48" x 22" (1,056 sq. in.)
- Warming rack surface: 48" x 8" (344 sq. in.)
- Main burners: 112,000 BTU's
- Backburners: 22,000 BTU's (11,000 x 2)
- Cut-out dimensions: 50" w x 23½" d x 11½" h



E1060i-9E1N
w/ Digital Thermometer



E1060i-9E1N-W
w/ Digital Thermometer & Magic View Window



Echelon E1060i, 48" Built-In Analog Grill

E1060i-9EAN*

SPECIFICATIONS

- Primary cooking surface: 48" x 22" (1,056 sq. in.)
- Warming rack surface: 48" x 8" (344 sq. in.)
- Main burners: 112,000 BTU's
- Backburners: 22,000 BTU's (11,000 x 2)
- Cut-out dimensions: 50" w x 23½" d x 11½" h



E1060i-9EAN
w/ Analog Thermometer



E1060i-9EAN-W
w/ Analog Thermometer & Magic View Window

*All models available in natural gas or propane (for propane, change **N** to **P** in the model #).

Buying A Fire Magic Grill? Get the Best Price with BBQ GIRLS! We Beat Any Price Guaranteed!
Must be the exact same model #, color and new not open box to qualify.

Premium Accessories



Stainless Steel Mixer Faucet 3836

Stainless steel construction with hot and cold capabilities.



Double Sink 3837

Stainless steel construction under-mount double sink (30" x 16") with a drain plug on each side.



Sink & Faucet 3587 & 3588

- Cut-out: 14" w x 14" d x 17" h

Adds convenience and functionality to your outdoor kitchen. Purchase separately or together. Sink measures 15" x 15" x 6" and requires a 17" clearance underneath.



Bamboo Cutting Board 3582-1

- Dimensions: 14" w x 12" d

This durable and functional Bamboo Cutting Board is perfect for preparing meats and vegetables for grilling.



Wooden Scraper 3502-W

- Dimensions: 17½" h x 4½" w

Featuring premium Red Oak hardwood construction for long lasting use, the Fire Magic wooden scraper offers a safe, effective means to remove buildup and residue and keep your Diamond Sear cooking grids ready for grilling.



Cooking Grid Scraper 3502-H (for Diamond Sear cooking grids) 3502-A (for round cooking grids)

- Dimensions: 16" h x 4½" w

This highly effective scraper designed specifically for Diamond Sear cooking grids is made of solid stainless steel with a black high temperature nylon handle. A version for round grids is also available.



Griddle Scraper 3502-G

- Dimensions: 7" h x 7" w

Use this handsome 7" x 7" scraper to clean your Fire Magic stainless steel griddles. Also works great on Diamond Sear cooking grids. Stainless steel construction with black high temperature nylon handle.



Turkey Fryer Kit 3570

You'll be amazed at how tender a deep-fried turkey can be. Kit includes pot, inner basket with sturdy handle and thermometer probe. Great as a crab or corn pot.

FREE SHIPPING *

BEST PRICE

EST. IN ARIZONA

WILDFIRE

OUTDOOR LIVING

We fell in Love with the quality of this grill and you will too! Black or Stainless It's Amazing! See it in our showroom

OVERSIZED HANDLE
ROTISSERIE/BACK BURNER
INTERNAL LIGHTS
SEAMLESSLY WELDED LIDS
DOUBLE WALLED SPRING ASSISTED HOOD
LASER CUT STAINLESS STEEL COOKING GRATES
HEAVY DUTY HEAT DIVIDERS
CAST STAINLESS STEEL BURNERS
ILLUMINATED LED KNOB BEZELS
BLACK 304 STAINLESS STEEL




Call Now



Visit our Showroom to see this amazing grill in person. Shop our online store for all the WildFire Grills & Components



Made in USA

BBQ GIRLS



or



Choose Your Handle

All Prices are subject to change. Final Prices are displayed online.





BBQ Girls 12x12 Single Door

12-INCH SINGLE ACCESS DOOR (REVERSIBLE)
Cutout 12" x 12"
Overall Dimensions 14 x 14



BBQ Girls 18" Single Door

SINGLE ACCESS DOOR VERTICAL (REVERSIBLE)
CUTOUT: 14 3/8"W X 20 1/2"H
Overall Dimensions 16 3/8w x 22 1/2 H



BBQ Girls 21-INCH SINGLE ACCESS DOOR

CUTOUT 17 3/8"W x 24 1/2" H
OVERALL DIMENSION 19 3/8" W x 26 1/2" H
REVERSIBLE



BBQ Girls 24-Inch Horizontal Door (Reversible)

CUTOUT 20 1/2"W x 14 3/8" H
OVERALL DIMENSIONS 22 1/2" W x 16 3/8" H



BBQ Girls Double Doors

25" Double Doors cutout 21 1/2" W x 18 3/8" H
OVERALL DIMENSIONS 23 1/2" W x 20 3/8" H

32" Double Doors cutout 28 3/4" W x 18 3/8" H
OVERALL DIMENSION 30 3/4" W x 20 3/8" H





BBQ GIRLS Double Drawer

CUTOUT 15 3/8" W x 19 5/8" H x 21" D

OVERALL DIMENSION: 17 3/8" W x 21 5/8" H x 21" D

DRAWER INTERIOR 15 5/8" W x 19 1/4" L x 7 1/2" H



BBQ GIRLS TRIPLE DRAWER

CUTOUT 15 3/8" W x 27 5/8" H x 21" D

OVERALL DIMENSIONS 17 3/8" W x 29 5/8" H x 21" D

ALSO Available with paper towel bin to replace top drawer. See this option online



BBQ GIRLS 30" x 15" SINGLE DEEP STORAGE DRAWER

CUTOUT 28 1/4" W x 13 1/4" H x 21" D

OVERALL DIMENSION 30 1/4" W x 15 1/4" H x 21" D



BBQ Girls Spice Rack Drawer

CUTOUT 6 1/2" W x 19 1/4" H x 16 1/2" D

OVERALL DIMENSION 8 1/2" W x 21 1/4" H x 16 1/2" D



BBQ Girls 20" SINGLE Trash/Propane Drawer

CUTOUT 18" W x 24 1/4" H x 16 3/8" D

OVERALL DIMENSION: 20" W x 26 3/8" H x 16 3/8" D



BBQ Girls 20" 2 Bin Trash/Recycle Drawer

CUTOUT 18" W x 24 1/4" H x 24" D

OVERALL DIMENSION: 20" W x 26 3/8" H x 24" D
2 trash cans included



BBQ Girls 32-inch drawer/Door Combo

CUTOUT 30 1/4" W X 19 1/4" H x 21" D

OVERALL DIMENSION 32 1/4"W x 21 1/4"H x 21"D

ALSO Available with a Propane Drawer (See Online)



BBQ Girls 39 inch access door & triple combo

Cutout 37 1/4" wide x 19 1/4" H x 21" D

OVERALL DIMENSIONS 38 1/4"W x 21 1/4"H x 21"D

Also available with a trash /propane drawer on the right instead of the single door. See it online.



BBQ Girls 13-inch Narrow Trash Drawer

Cutout 12"W x 24 1/4"H x 19 1/2" D

OVERALL DIMENSIONS

14" W x 26 3/8"H x 19 1/2" D

trash can included



BBQ Girls Paper Towel Holder

Cutout 14 1/4" W x 8 5/8" H x 8 5/8" D

OVERALL DIMENSION

16 1/4" x 10 5/8"H x 8 5/8"D



BBQ Girls 42" Triple Combo

Cutout 40 3/8"W x 19 1/4" H x 21" D

OVERALL DIMENSION

42 3/8 x 21 1/4"H x 21" D





BBQ Girls Enclosed Cabinet



BBQ Girls Slide Out Ice Bin Drawer



BBQ Girls Drop In Ice Bin



BBQ Girls Slide In Ice Bin



BBQ Girls Sink



**BBQ GIRLS Loves True Flame Grills
and You will to.**

Lights turn red the burner is on.

Multi Position Hood Hinge.

304 Stainless Steel Construction

Interior & Exterior Lights

14,000 btu Cast Stainless Burners

Square Cooking Grates

True Flame TFE Grills



TFE Grill - 25" & 32" TFE25-NG/LP, TFE32-NG/LP

- Heat Zone Separators • #304 Stainless Steel Flame Tamers / Burner Covers • 8mm Round Stainless Steel Cooking Grates • Constructed with #304 Stainless Steel • 14,000 BTU #304 Stainless Steel Tube Burners • Knurled Heat-Resistant Handle • Flame Thrower Ignition • ETL Certified

OPTIONAL ACCESSORIES:

- Deluxe Vinyl Grill Cover • Rotisserie Kit Available • Drop-In Sear Burner (TF-IRB) • Gas Timers • Griddle Plate

- **FEATURES** • Exterior Lighting Behind Each Knob Indicating On/Off Burner State • #304 Stainless Steel Construction • 1/2" Thick Stainless Steel Cooking Surface • 495 Sq. Inches of Cooking Surface • 18,000 BTU #304 Stainless Steel U-Tube Burners • 36,000 Total BTU Output • Heat Zone Separator, allowing Dual-Temperature Cooking • Full Length Exterior LED Bar Above Knobs • #304 Stainless Steel, Removable Lid • High-Power, Reliable Flame-Thrower Ignition • Large Capacity Drip Tray • Grill Liner Available - GL-TFGRID30 • Weight: 120 LB. • ETL Certified •

OPTIONAL ACCESSORIES:

- Deluxe Vinyl Grill & Cart Cover Available

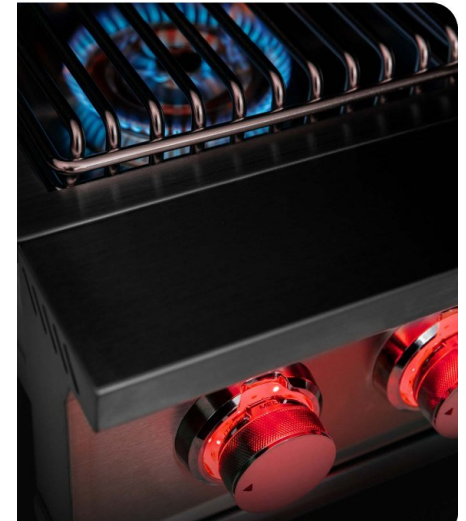
SIDE & POWER BURNER True Flame



TrueFlame Double Side Burner TFSB2-NG/LP
Exterior Lighting Behind Each Knob Indicating On/Off Burner State • Full Length Exterior LED Bar Above Knobs • Total BTU's 24,000 • Stainless Steel Construction • Removable, Stainless Steel Lid • Brass Plated Burners • ETL Certified • Deluxe Vinyl Cover Available TrueFlame Power Burner TFPB-NG/LP • Exterior Lighting Behind Each Knob Indicating On/Off Burner State • Full Length Exterior LED Bar Above Knobs • Total BTU's: 60,000 • Stainless Steel Construction • Removable, Stainless Steel Lid • Dual, Cast Stainless Ring Burners • Removable Wok Grate • ETL Certified 23 • Deluxe Vinyl Cover Available



TrueFlame Power Burner TFPB-NG/LP • Exterior Lighting Behind Each Knob Indicating On/Off Burner State • Full Length Exterior LED Bar Above Knobs • Total BTU's: 60,000 • Stainless Steel Construction • Removable, Stainless Steel Lid • Dual, Cast Stainless Ring Burners • Removable Wok Grate • ETL Certified 23 • Deluxe Vinyl Cover Available

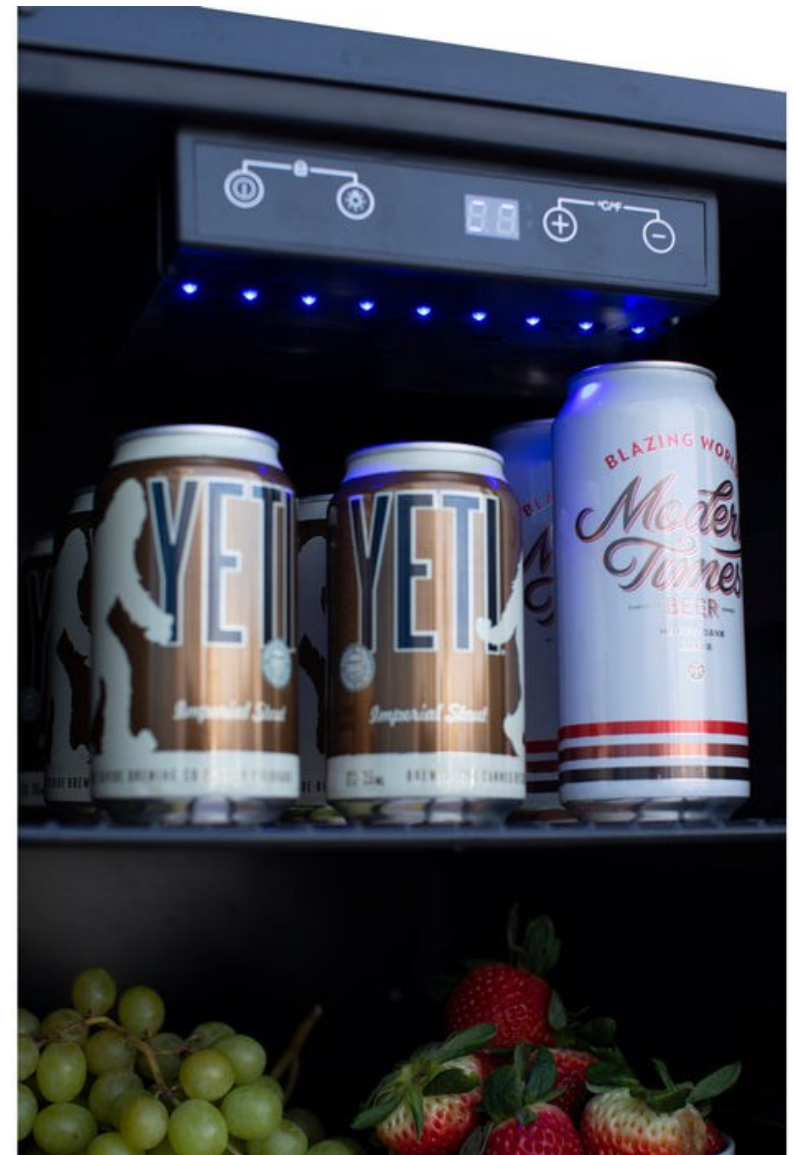


True Flame

24" 5 Cu. Outdoor Rated Double Drawer Refrigerator TF-RFR-24DR2-A • Storage Capacity: 5 ft³ • 114 Can Capacity • Stainless Steel Interior Drawers • Interior LED Light • 32°F - 72°F Temperature Range • Black Interior & Exterior Cabinet • Self-Closing #304 Stainless Steel Door • #304 Stainless Steel Body & Handle • Storage Capacity: 5.3 ft³ • 165 Can Capacity • 32°F - 50°F Temperature Range • Self-Closing #304 Stainless Steel Door • #304 Stainless Steel Body & Handle • Right to Left Opening Model (-R) TF-RFR-15G 15" 3.2 Cu.



Outdoor Rated Refrigerator with Glass Door 15" 3.2 Cu. Outdoor Rated Refrigerator TF-RFR-15S • Storage Capacity: 3.2 ft³ • 32°F - 50°F Temperature Range • Self-Closing #304 Stainless Steel Door • #304 Stainless Steel Body & Handle • Storage Capacity: 3.2 ft³ • 32°F - 50°F Temperature Range • Black Interior • Triple-Glazed Tinted Glass Door • Self-Closing #304 Stainless Steel Door • #304 Stainless Steel Body & Handle



SINKS AND BAR PREP



15" Drop-In Sink & Hot/Cold Faucet TF-NK-15D



19" Undermount Sink & 360° Hot/Cold Faucet TF-NK-19U



32" Farmhouse Sink TF-NK-32FH



30" Beverage & Prep Station TF-BC-30L



14" Trash Chute & Cutting Board with Lid TF-TC-14-A



ACCESS DOORS

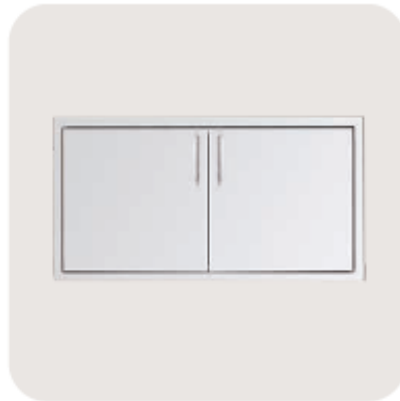
True Flame

True Flame’s access doors give you elegant and convenient access to your island, utilities, and grill. Made with commercial-grade stainless steel, hidden hinge design, #304 grade stainless steel handle, heavy-duty flanges, reversible door mounting, and magnetic latches



**33" Vented Double
Access Door**

TF-DD-33V-A



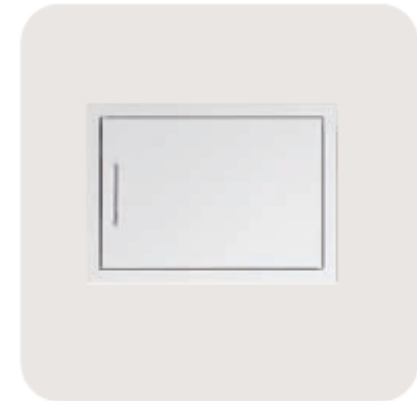
**Double Access Door
(26"-45")**

TF-DD-26-A / TF-DD-30-A
TF-DD-32-A / TF-DD-33-A
TF-DD-36-A / TF-DD-39-A



**Vertical Access Door
(16".17".18",20")**

TF-DV-16-A / TF-DV-17-A
TF-DV-18-A / TF-DV-20-A



**Horizontal Access Door
(22".27")**

TF-DH-22-A / TF-DH-27-A

COMBOS

True Flame

These components are specifically designed with versatility in mind. Whether you need a simple storage setiu, LP tank drawer, paper towel holder, or weather-resistant dry storage shelving, hidden hinge design with #304 stainless steel handle. These commercial grade stainless steel combos give you the options you need for a perfect outdoor setup



**2-Drawer & Access Door
Combo (30",32" 33",
36",42")**

TF-DC2-30-A / TF-DC2-32-A

TF-DC2-33A / TF-DC2-36-A

TF-DC2-42A



**33" 3-Drawer & Access
Door Combo**

TF-DC3-33-A



**33" 2-Drawer & LP Tank
Pullout Drawer Combo**

TF-DC2-33LP-A

[See More Online>](#)

True Flame's line of drawers are feature-packed storage options that ensure you get exactly what you need in your backyard set up. Made with commercial-grade stainless steel, these drawers feature heavy-duty flanges, #304 stainless steel handle, and soft closing drawers



STORAGE DRAWERS True Flame



17" Single Drawer
TF-DR1-17-A



17" Double Drawer
TF-DR2-17-A



17" Triple Drawer
TF-DR3-17-A



17" Vertical 2-Drawer &
Paper Towel Holder
Combo TF-TDC-17-A



20" Trash Pullout
Drawer TF-TD1-20-A



20" Trash Recycling 2-
bin pullout drawer
TF-TD2-20-A



17" Paper Towel Holder
TF-TH-17-A



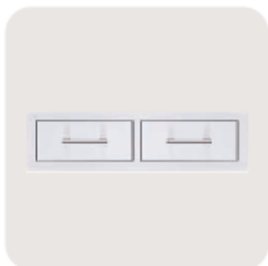
20" Vented LP Tank or
Trash Drawer
TF-DR1-20LP-A



26" Utensil Drawer
TF-DR1-26U-A



36" Warming Drawer
TF-WD-36



32" Double Horizontal
Drawer
TF-DR2-32H-A





BEST PRICE
QUALITY GUARANTEED

BBQ COACH FRAME KITS Now Available in Galvanized Steel Heavy Duty or Aluminum
If you live by the ocean with salty air, snow country or on an elevated wooden deck we recommend you use aluminum.
For all other locations use the Heavy Duty Galvanized Steel.
We have sold galvanized steel kits to Florida, Texas, New Jersey for over 20 years with no problems.

We Sell BBQ COACH DIY FRAME KITS
We Welcome BBQ Coach as the Official Spokesperson for BBQ Girls

**Real Steel Frames with No Welding Needed
DIY & SAVE \$\$\$**

New

BBQ Girls has signed a contract with Willie the BBQ Coach making him an official spokesperson for our company. In addition, he has given us a license to sell the real BBQ Coach DIY Outdoor Kitchen Frame kits.
The BBQ Coach CA CORP has no ownership in BBQ Girls.



4 ft Module Frame Kit.

Standard Cooking Height Measures: 4 ft long x 31.5" depth x 35" high

Bar Height Measures: 4 ft long x 31.5" depth x 41" high

Specifications: 18 Gauge Structural Galvanized Steel tubes. 25mmx25mm no welding needed thanks to our steels couplers. Just screw it together.



8 ft Module Frame Kit. Non Telescoping

Standard Cooking Height Measures: 8 ft long x 31.5" depth x 35" high

Bar Height Measures: 8 ft long x 31.5" depth x 41" high

Specifications: 18 Gauge Structural Galvanized Steel tubes. 25mmx25mm no welding needed thanks to our steels couplers. Just screw it together.



[See the Video No Cut Grill Frame into telescoping 8 ft module frame](#)

4-8 ft Telescoping Module Frame Kit

Standard Cooking Height Measures: 4-8 ft long x 31.5" depth x 35" high

Bar Height Measures: 4-8 ft long x 31.5" depth x 41" high

Specifications: 18 Gauge Structural Galvanized Steel tubes. 25mmx25mm no welding needed thanks to our steels couplers. Just screw it together.

Module frames are pre-cut and require assembly with self drilling screws sold separately. These frames are heavy duty and can support thick concrete & granite slab counters, stucco and stone veneer siding. Our steel couplers make it easy to assemble a real steel frame without welding. This is a great way to DIY and save big money building the outdoor kitchen of your dreams.



3 ft Drop down burner module



No Cut grill/fridge module



Smoker module with back wall

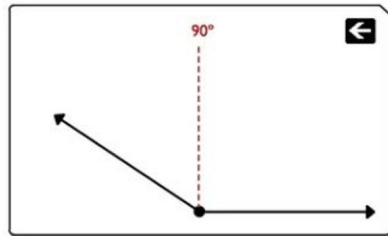


Smoker module no wall

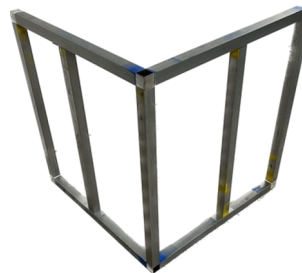
New: XL Telescoping Traeger Module



Diagonal Corner module
Great for sinks, pizza ovens
and smokers like green egg



Custom Angle Kit (not a module)
create an angle between 2 modules



90 degree corner kit
great to make L islands
and U islands



1 Ft Module Extension Kit

1 ft straight module extension kit
Works with straight modules only

Telescoping No Cut Appliance Cutout Kits

GRILL Cutout Kit	CO-GRILL
XL Grill Cutout Kit	CO-XLGRILL
XXL Grill Cutout Kit	CO-GRILLXXL
Grill cart Cutout Kit	CO-CART
Grill Platform Kit	CO-GP
Slide in Side Burner Kit (control knobs face forward)	CO-SB
Side burner platform kit	CO-SBP
Drop In Side Burner Kit (control knobs face sky)	CO-DSB
Power burner no drop kit	CO-PB

Single door kit	CO-SD
Horizontal & Double door kit	CO-DD
XI double door kit	CO-DDXL
Vertical drawer kit	CO-VDRW
XI drawer kit	CO-XLDRW
Trash/propane drawer kit	CO-TR/PRO
Combo kit	CO-COMBO
Triple combo kit	CO-TCombo

Bar center kit	CO-BARL
Drop in ice bin kit	CO-DIB
Fridge/ice maker kit	CO-F
Keg kit	CO-Keg
Small sink kit	CO-SinkSM
Medium sink kit	CO-SinkM
Large sink kit	CO-SinkL

Every Appliance and component you plan to put into your module requires extra framing called a cutout kit to support it. For example: a grill requires a grill cutout kit, a door needs a door cutout kit... Our kits are pre cut for the depth parts to fit our modules. The width parts of the cutout kits are made with our telescoping parts for no cutting. Extra Vertical tubes for cutout kits and cement board seams are sold separate.

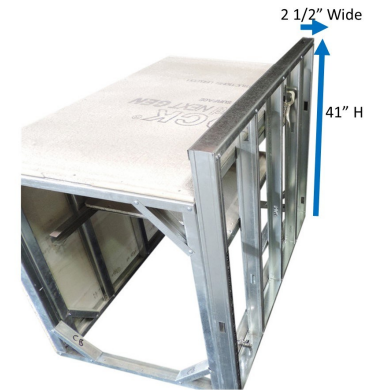


Upgrade Kits



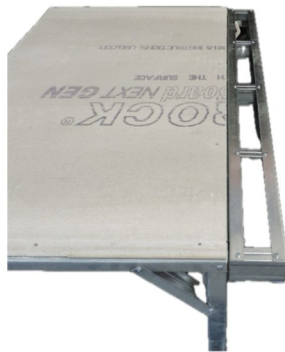
Welded Split Bar Counter Frame

4 ft Welded Split Bar Counter . Available in 4ft and 2 ft lengths. Makes it super easy to add a raised bar counter for bar stools to your outdoor kitchen.



4ft of Back Splash Kit

4ft of Back Splash kit. We use 20 gauge 2 1/2 wide steel studs and tracks to create a back splash frame. The size is perfect for electrical boxes and looks great.



4ft of 4" Level Over Hang Kit

4ft of 4" Over Hang Kit. This is needed for a tile counter top with stone veneer siding. It protects your stone from water. Not needed with granite or concrete slabs.



4 ft of 12" Level Overhang Kit

4 ft of 12" Level Overhang. Required for tile counter tops. For granite slab or concrete this is optional. Some people like it for the added protection for their granite. Supports sold Separate.

Needed Extras



Hex Head Screws



Cement Board Screws



Cement Board Screw Bit



CP Connector Plate



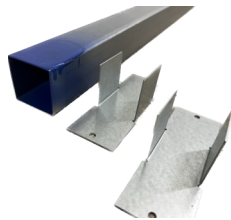
Stainless Steel Air Vent w/film



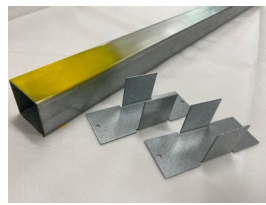
Composite Shims



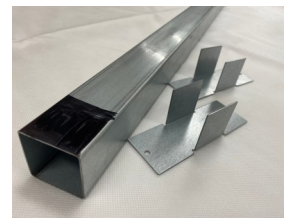
4ft x 25mm x25mm



CTT/EF w/ 1 ways



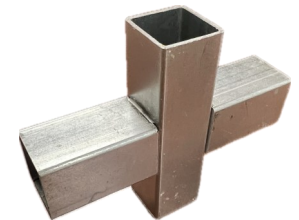
Vertical Tube w/1 ways



Bar Height w/1 ways



4ft x 1.5" Catcher Track



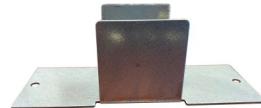
4 way Flat



4 Way Corner



3 Way Corner



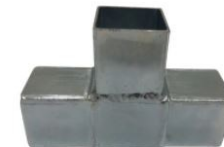
1 Way Machine Made



1 Sided 1 Way



Welded 1 Way



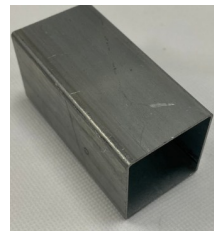
3 Way Flat



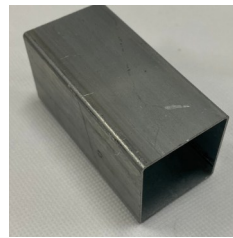
90 Degree



45 Degree



Adaptor Coupler



Union Coupler



Electrical Box



Leveling Feet



Cement Board Stucco

BBQ COACH Cement Board Stucco



#1 Rated Premium 1 Coat Stucco for Outdoor Kitchens constructed with cement board.

- No Metal Lath save you a lot of time and hassle!
- White color only.
- You can mix in color or paint with masonry paint.
- 5 gallons approx coverage 130-150 sq ft
- Premium acrylic stucco expands and contracts with the weather helping to avoid cracking like water based stuccos
- Homeowner Approved!

Cost about the same price as house paint.

5 gallons \$299.99 (only \$60 a gallon just like paint)

1 gallon \$\$72.47



FREE SHIPPING On Orders Over \$49.*

Must be located in one of the states on the left side of the green line on the map.

FREE SHIPPING On Orders Over \$400.*

Must be located in one of the states on the right side of the green line on the map.