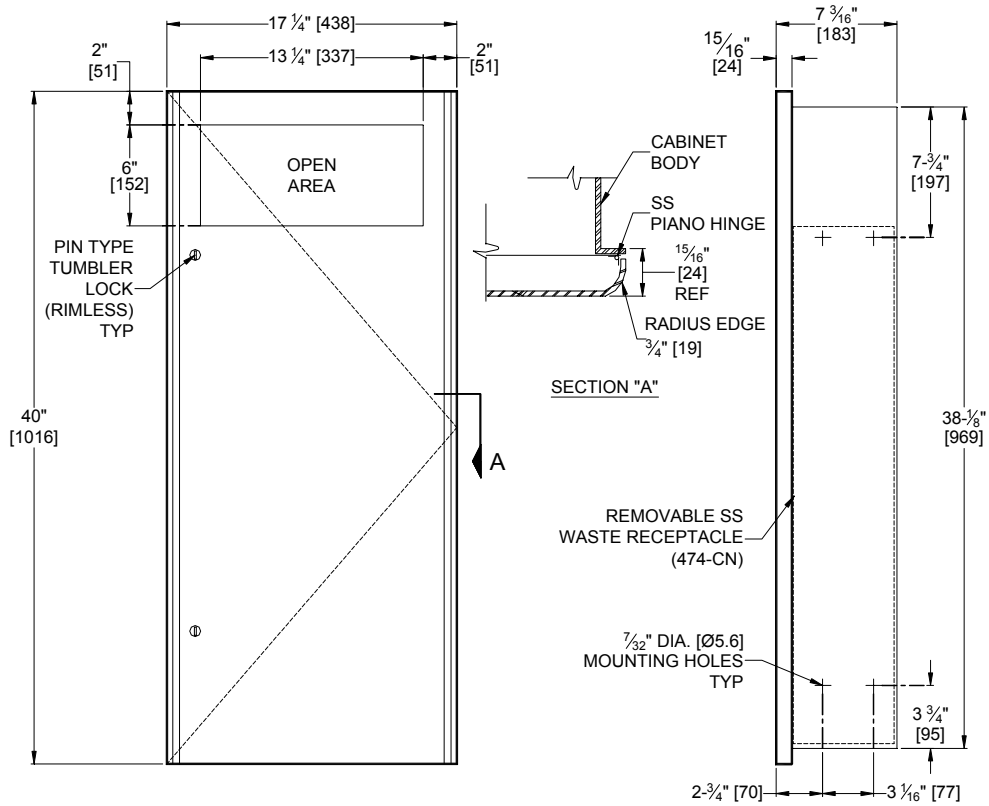




AMERICAN SPECIALTIES, INC.
441 Saw Mill River Road, NY 10701 (914) 476-9000
www.americanspecialties.com

MODEL №: 9474
ISSUED: 01/87
REVISED: 07/09

RECESSED WASTE RECEPTACLE



SPECIFICATION

Recessed Waste Receptacle unit shall have a waste capacity of 12 gal (46 liters) and shall be fabricated of type 304 stainless steel alloy 18-8. Cabinet shall be 20 gauge and shall have a 1" (25) wide perimeter trim to lay flat against wall. Full face door shall be 16 gauge with square return to wall at top and bottom and radius returns to wall on vertical edges and shall have welded closed and ground corners. Door shall be attached to the edge of unit with a full length 3/16" dia. (Ø5) stainless steel multi-staked piano hinge and shall be held closed with two (2) tumbler locks keyed alike to other ASI Washroom Equipment. Waste container shall be fabricated of heavy duty stainless steel with a finger grip for easy removal. All exposed surfaces shall have a satin finish.

Recessed Waste Receptacle Unit shall be Model № 9474 as manufactured by American Specialties, Inc., 441 Saw Mill Road, Yonkers, New York 10701-4913

INSTALLATION

Mount unit in wall recess using № 10 self tapping screws (supplied by others) through concealed mounting holes provided. For compliance with ADA Accessibility Guidelines install unit so that the center of the waste receptacle opening is 48" (1219) maximum AFF (above finished floor)

RWO (Rough Wall Opening) required is 15-3/4" W x 38-1/2" H x 6-1/4" D (400 x 978 x 159)

OPERATION

Waste is inserted through opening at upper section of unit. Waste container is emptied manually on cycle determined by maintenance needs. Locked door prevents unauthorized access or removal.