



**AMERICAN SPECIALTIES, INC.**

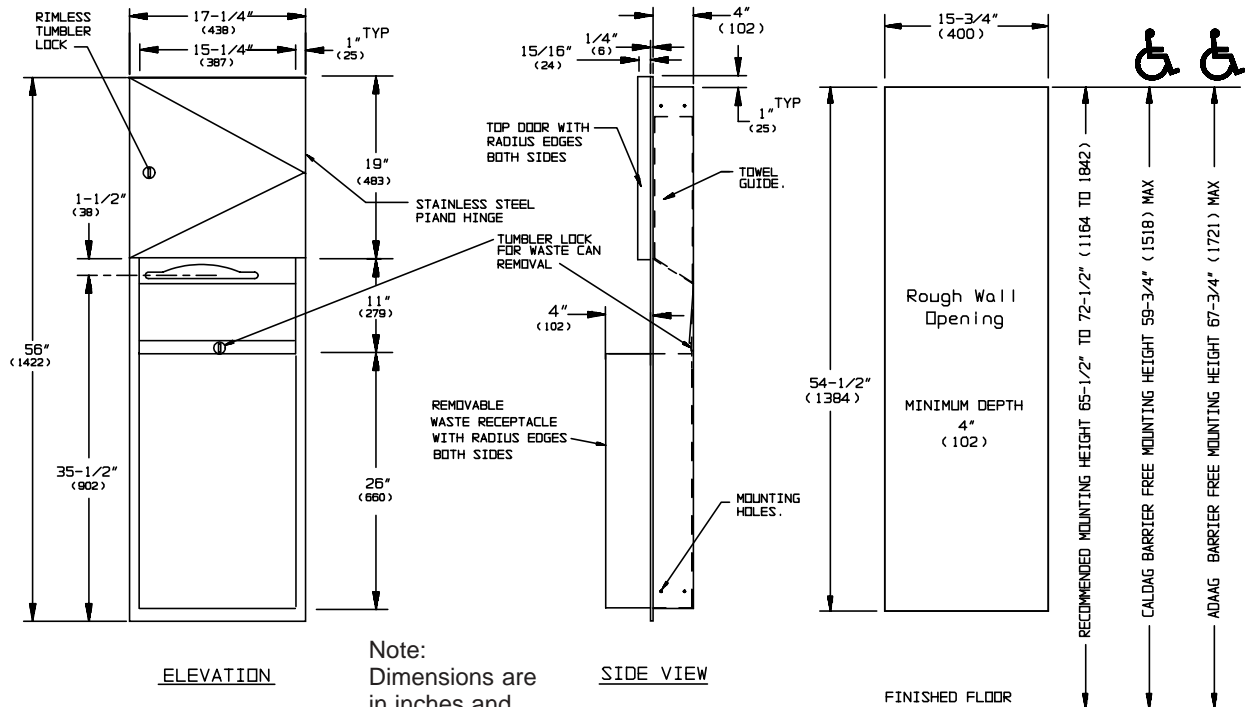
441 Saw Mill River Road, Yonkers, NY 10701 (914) 476-9000  
www.americanspecialties.com

MODEL No: 9469

ISSUED: 1-87

REVISED: 5-07

**PROFILE COLLECTION RECESSED PAPER TOWEL DISPENSER AND WASTE RECEPTACLE**



Note:  
Dimensions are  
in inches and  
(millimeters)

**SPECIFICATION**

Profile Collection Recessed Paper Towel Dispenser and Waste Receptacle shall hold and dispense 800 standard multi-fold or 600 standard C-fold paper towels and shall have a waste capacity of 1.78 ft<sup>3</sup> or 13.3 gallons (.05 M<sup>3</sup> or 50.4 liters). Cabinet, waste receptacle and door shall be fabricated of type 304 stainless steel alloy 18-8. All exposed surfaces shall have a N<sup>o</sup> 4 satin finish. Full-face door shall be 16 gauge and shall be free of miters, welding or open seams with 3/4" (19) radiused vertical edges and 15/16" (24) square horizontal returns to wall. Door shall be attached to the edge of unit frame with a concealed full length 3/16" diameter (Ø4.8) heavy duty stainless steel multi-staked piano hinge and shall be held closed with a flush rimless tumbler lock keyed alike to other ASI washroom equipment. Towel dispensing slot shall have a fully hemmed-in rolled edge for snag-free dispensing and user safety. Removable waste receptacle shall be 16 gauge with hemmed edges and shall have 3/4" (19) radiused vertical edges to match door above and shall be retained by tumbler lock keyed alike to other ASI washroom accessories. Cabinet shall be 22 gauge with one-piece face trim construction 1" (25.4) wide with no miters or exposed welding and 1/4" (6.4) square returns to wall. Structural assembly of body and door components shall be of welded construction.

**Profile Collection Recessed Paper Towel Dispenser and Waste Receptacle shall be Model N<sup>o</sup> 9469 as manufactured by American Specialties, Inc., 441 Saw Mill River Road, Yonkers, New York 10701-4913**

**INSTALLATION**

Mount unit in wall recess with N<sup>o</sup> 10 self-tapping screws (by others) through concealed mounting holes provided. For compliance with ICC/ANSI A-117.1-2003 and ADA Accessibility Guidelines install unit with centerline of towel dispenser slot 48" (1219) maximum above finished floor (MAX AFF) only if clear floor forward reach or side reach access is provided. Be advised that local codes may require mounting centerline of towel dispenser slot 40" (1016) MAX AFF (e.g. California UBC/Title 24). Note that top of Rough Wall Opening (RWO) is 3/4" (19) below top of unit. For general utility install unit with centerline of towel dispenser slot between 49" and 56" (1245 to 1422) AFF.

**RWO required is 15-3/4" W x 54-1/2" H x 4" D minimum (400 x 1384 x 102)**

**OPERATION**

Paper towels are manually withdrawn through dispensing slot until towels are depleted. Unit will continue to feed properly when reloaded with a partial load in place. Refill dispenser by unlocking door and replacing towels for an empty or partially empty unit. Dispenser supply is replenished and waste container is emptied manually on cycles determined by maintenance needs. A commercially available disposable trash bag is provided by owner, draped over edges of can and locked into cabinet with receptacle. Locking compartment and receptacle retainer prevents unauthorized access or removal.

Accessory Specialties

AMERICAN DISPENSER

Desert Ray Products

WATROUS INC.