



**AMERICAN SPECIALTIES, INC.**

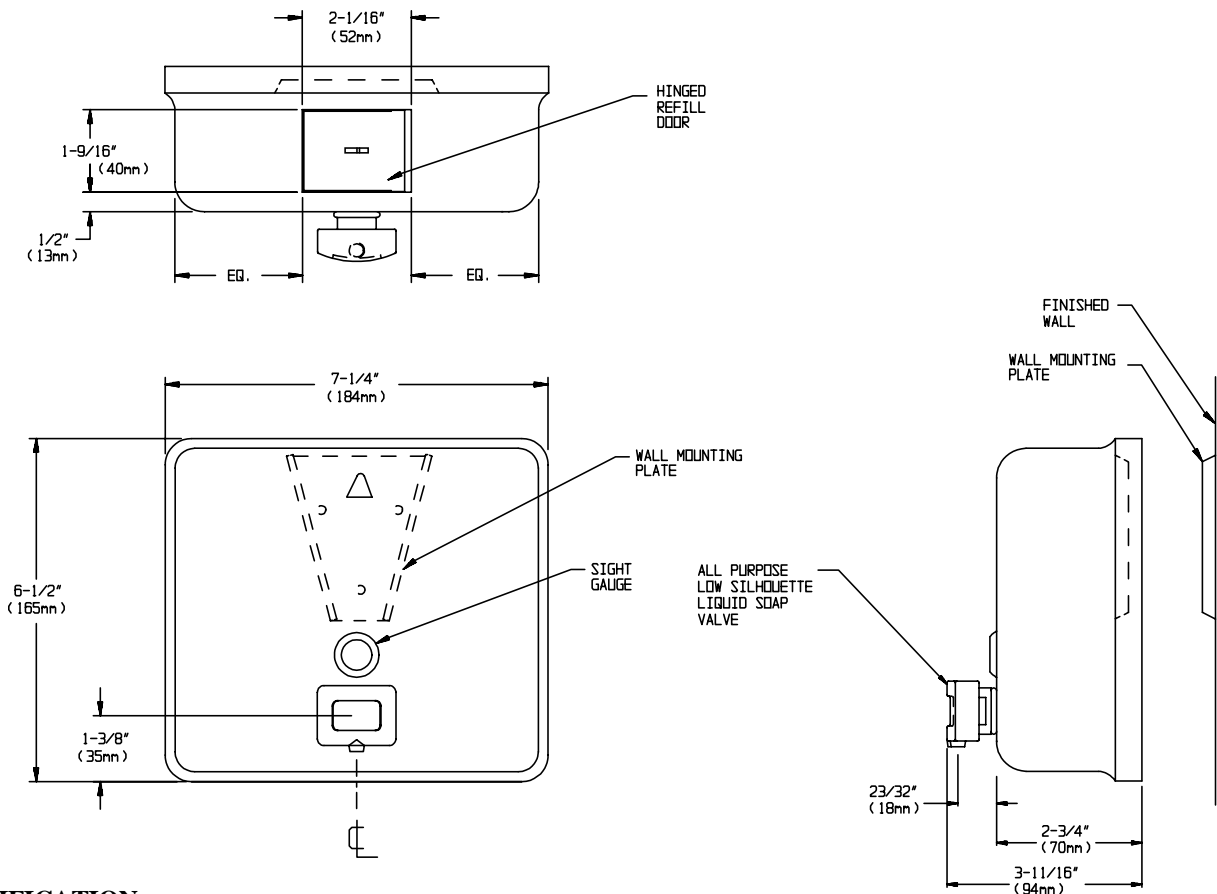
441 Saw Mill River Road, Yonkers, NY 10701 (914) 476-9000  
www.americanspecialties.com

MODEL No: 9343

ISSUED: 7-05

REVISED:

**PROFILE COLLECTION SURFACE MOUNTED SOAP DISPENSER**



**SPECIFICATION**

Profile Collection Surface Mounted Soap Dispenser shall have a capacity of 48 fluid oz. (1.4 liter) of liquid or lotion soaps, synthetic detergents and antibacterial soaps containing PCMX and/or Triclosan. Dispenser shall be fabricated of alloy 18-8 stainless steel, Type 304, 20 gauge. All exposed surfaces shall be N° 4 satin finish. Valve shall be constructed of a plastic valve body and push button with stainless steel and plastic internal parts. Valve operation shall comply with ADA Accessibility Guidelines by requiring no more than 5 lbs<sub>f</sub> (22.2 Newtons) pressure to actuate and require no grasping or twisting by operator. A tamper resistant sight gauge shall be provided. Unit shall have a hinged stainless steel refill door on top which is opened with special key provided.

**Profile Collection Surface Mounted Soap Dispenser shall be Model N° 9343 of American Specialties, Inc., 441 Saw Mill River Road Yonkers, New York 10701-4913**

**INSTALLATION**

Unit is surface mounted to wall or partition by means of a wall mounting plate and screws. Unit is secured to mounting plate and locked in place by means of a locking screw installed through tamper resistant refill door. For maximum usability and compliance with ADA Accessibility Guidelines, unit should be installed so that valve is 54" (1372mm) max. above finished floor (AFF) when clear floor side reach access is provided or 48" (1219mm) max. AFF if clear floor forward reach access is provided or 46" (1168mm) max. AFF if side reach over an obstruction only is provided (ie: vanity). Recommended installation for general utility is 42" (1066 mm) AFF or 6" (152mm) minimum above wash basin.

**OPERATION**

Soap is manually dispensed by depressing push button. Unit is refilled through hinged door at top requiring special key (supplied) to open. Soap tank will continue to feed properly until empty. Tank supply is replenished manually on cycle determined by maintenance needs.