



AMERICAN SPECIALTIES, INC.

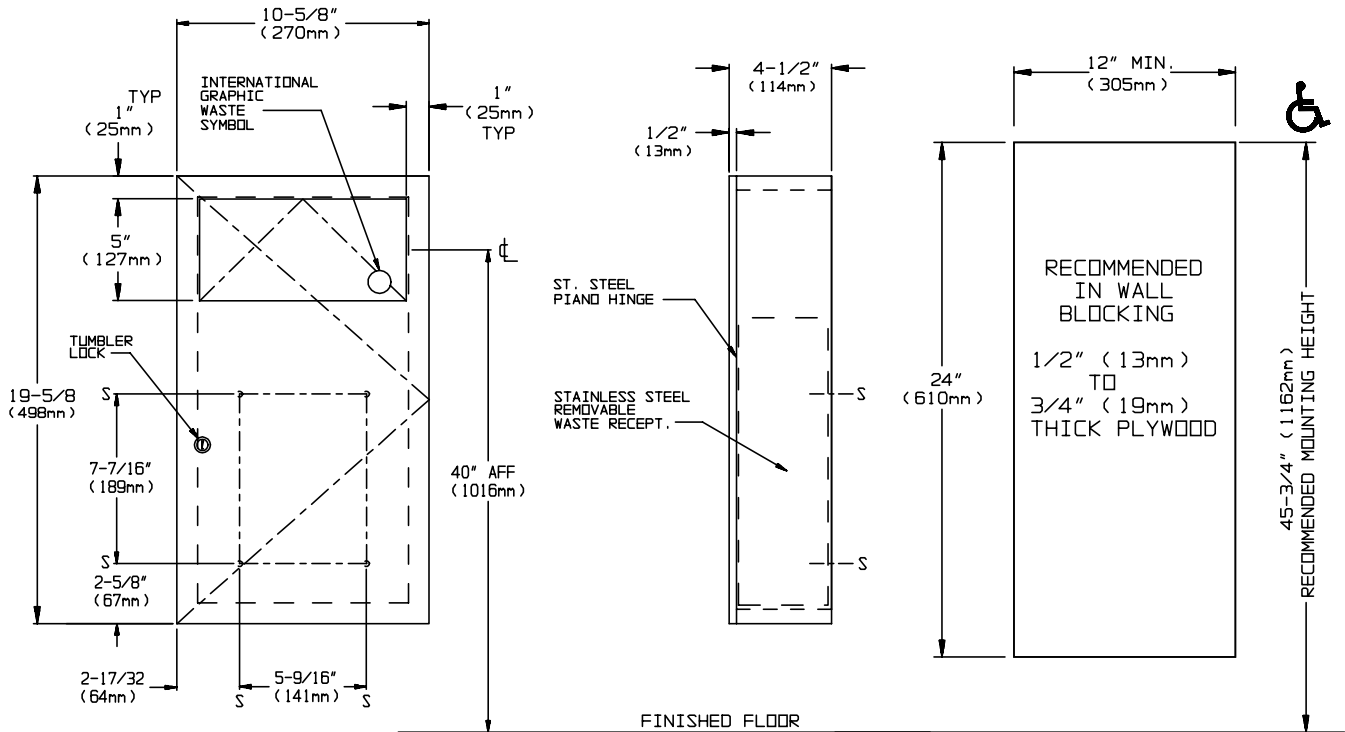
441 Saw Mill River Road, Yonkers, NY 10701 (914) 476-9000
www.americanspecialties.com

MODEL No: 6471-9

ISSUED: 1-87

REVISED: 9-06

SURFACE MOUNTED SANITARY NAPKIN DISPOSAL



SPECIFICATION

Surface Mounted Sanitary Napkin Disposal shall have a waste capacity of 1.4 gal (5.4 liters) of dry/solids waste. Full face door shall be fabricated of 18 gauge stainless steel alloy 18-8, type 304 and shall be attached to the cabinet body with a concealed 3/16" diameter (Ø4.8mm) stainless steel multi-staked piano hinge and shall be held closed with a tumbler lock keyed alike to other ASI washroom equipment. Body and push-door shall be 20 gauge stainless steel with no exposed fastening devices or spot-welded seams. Push door shall be hung on a full width concealed 3/16" diameter (Ø4.8mm) stainless steel multi-staked piano hinge and shall be held closed with a flat spring mounted in cabinet top and shall have the international graphic symbol for waste on face. Waste receptacle shall be fabricated of stainless steel and shall have a handle for easy servicing and removal and fully hemmed edges all around top opening for user and service safety. A full 22 gauge stainless steel SM collar is provided to dress out body behind flat wall flange. All exposed surfaces of unit shall have a N° 4 satin finish, and shall be protected during shipment by PVC film easily removable after installation.

Surface Mounted Sanitary Napkin Disposal shall be Model N° 6471-9 as manufactured by American Specialties, Inc., 441 Saw Mill River Road, Yonkers, New York 10701-4913

INSTALLATION

Unit is mounted on wall with N° 10 self-tapping screws (by others) through concealed mounting holes provided. Provide blocking or anchors in wall to receive appropriate mounting hardware (by others).

OPERATION

Users push door to deposit waste material into receptacle. Push-door is self-closing. Empty refuse by removing waste container and inverting over collection bag. Safety finger grip on waste container provides convenient grip for service. Locked door prevents unauthorized access or removal.

Accessory Specialties

AMERICAN DISPENSER

Desert Ray Products

WATROUS INC.