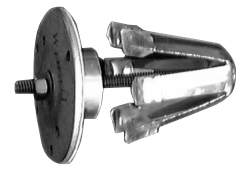




WingIt™ by BOBRICK



Grab Bar Fastening System Installation Guide

WingIt Grab Bar Fastening System Will Exceed Building Code Criteria for Grab Bars in the Following Wall Substrates

- 5/8" (16mm) drywall – painted or wallpapered
- 5/8" (16mm) drywall with tub surrounds
- 5/8" (16mm) drywall with tile, marble and all stone substrates
- 5/8" (16mm) drywall with any panel types including fiberglass faux marble, acrylic, and plaster
- 1/2" (13mm) drywall with tile, marble and all stone substrates
- 1/2" (13mm) drywall with any panel types including fiberglass faux marble, acrylic, and plaster
- Multiple layers of drywall
- Plaster and lathe
- 1/4" (6mm) acrylic/fiberglass surrounds
- All masonry type boards, with or without panel

NEVER INSTALL ANY FASTENER INTO WET OR DETERIORATING WALLS!

DO NOT INSTALL WingIt into BARE 1/2" (13mm) drywall when attempting to meet commercial building codes.

251-4 Standard Bobrick WingIt

- To be used in walls framed with 2" x 3" (50 x 75mm) or Larger with the Bobrick Standard Grab Bar.
- Accommodates wall substrates up to 1-1/2" (40mm) thick.

CALL FOR CUSTOM PRODUCTS, OR PRODUCTS TO FIT DIFFERENT WALL STRUCTURE.

LOCATION: To ensure adequate clearance, a stud finder should be used to verify that there are no studs within the area that the **WingIt** will be installed.

TOOLS REQUIRED LIST

TOOL NAME	TOOL SIZE
Regular Screwdriver	
Phillips Screwdriver	
Hammer or Rubber Mallet	
Drill	
Measuring Tape	
Drill Bit or Punch	1/8" (3mm)
Wrench	7/16" (11mm)
Hole Saw	1-1/4" (30mm)



1. Verify the length of the grab bar, by measuring from the inside of one grab bar flange to the outside of the other. This should give you the proper dimension.



2. Use a 1/8" (3mm) drill or punch to make a starter/pilot hole. Once the first pilot hole is drilled check your measurement to the other hole.



3. Carefully drill a 1-1/4" (30mm) hole in the wall precisely at the center point where each grab bar flange will align. In Ceramic Tile a piece of masking tape over the tile helps the

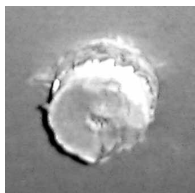
drill bite into the tile. For Ceramic Tile an Industrial Grade Carbide Tip Hole should be used.



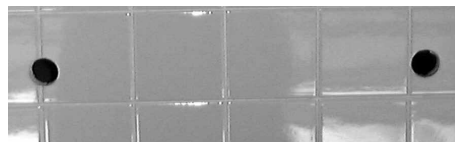
4. A Sandvik Carbide tipped Hole Saw [Available through **WingIt** – with 3/8" (9mm) arbor], will drill a 1-1/4" (30mm) hole at slow speeds in a matter of seconds and remain sharp for 30–80 holes, depending on the tile.



5. After the initial 1-1/4" (30mm) hole is made through the tile, stop, and eject the tile from the drill bit.



6. Then carefully finish the 1-1/4" (30mm) hole through the drywall. Do not push the drill. Allow it to cut, keeping the drywall intact behind the wall.



7. Picture of a ceramic tile wall with 2, 1-1/4" (30mm) holes –Ready for **WingIt** Installation.



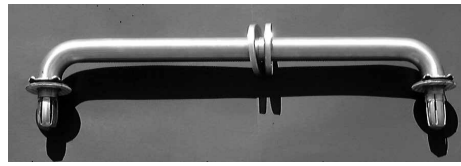
8. Measure the thickness of the wall by inserting a tape measure into the 1-1/4" (30mm)

hole. If the wall thickness is under 1-1/2" (40mm) you can use the standard **WingIt** – if above 1-1/2" (40mm) call for custom product with longer screw.





9. Measure out the thickness of the wall on the **WingIt** and back off the nut accordingly. For example, picture #8 shows a wall thickness of 3/4" (19mm). In this example you would back off the nut 3/4" (19mm) on the **WingIt**. This will allow adequate clearance.



10. Attach **WingIt** to Grab Bar – Picture on Left.



11. Attach **WingIts** to Grab Bar – Picture on Left.



12. Insert Grab Bar into 1-1/4" (30mm) holes – Hold down firmly allowing the tape to adhere to tile wall.



13. Remove the Bobrick Grab Bar, and the front of the **WingIt** is visible.



Picture Above Shows the **WingIt** as it would look inserted into the wall.



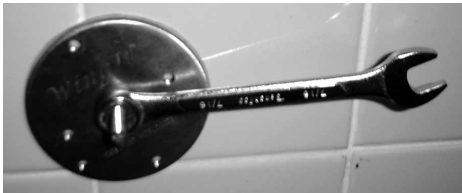
14. Verify the length of the nut from the **WingIt** faceplate is correct (step 8) – Then hit the **WingIt** firmly with a rubber hammer.



Picture on Left shows the **WingIt** after it is pushed through the wall. The wings are automatically actuated as they spring out.

DO NOT OVERTIGHTEN

Once the nut is tightened, Add a second nut to insure the **WingIt** will never loosen.

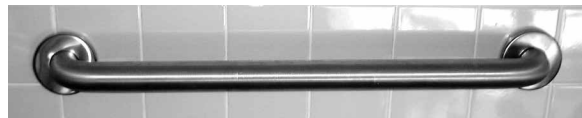


15. Pull on the bolt and tighten the nut by hand.

- Use a Nutdriver (screwdriver with a 7/16" (11mm) socket), this will insure that you do not overtighten.
- When using a cordless drill make sure to set the clutch setting to a slow speed.
- When using a 7/16" (11mm) wrench tighten only until you feel the **WingIt** is secure.



Picture Above Shows the inside of the wall after the **WingIt** has been installed.



In the U.S.A.: BOBRICK WASHROOM EQUIPMENT, INC.

200 Commerce Drive, Clifton Park, New York 12065-1350 • Tel: (518) 877-7444 • FAX: 518-877-5029
6901 Tujunga Avenue, North Hollywood, California 91605-5882 • Tel: (818) 982-9600 • FAX: 818-503-1102
or email: customerservice@bobrick.com

In Canada: BOBRICK WASHROOM EQUIPMENT COMPANY

45 Rolark Drive, Scarborough, Ontario M1R 3B1 (877) 423-8555

