



AMERICAN SPECIALTIES, INC.

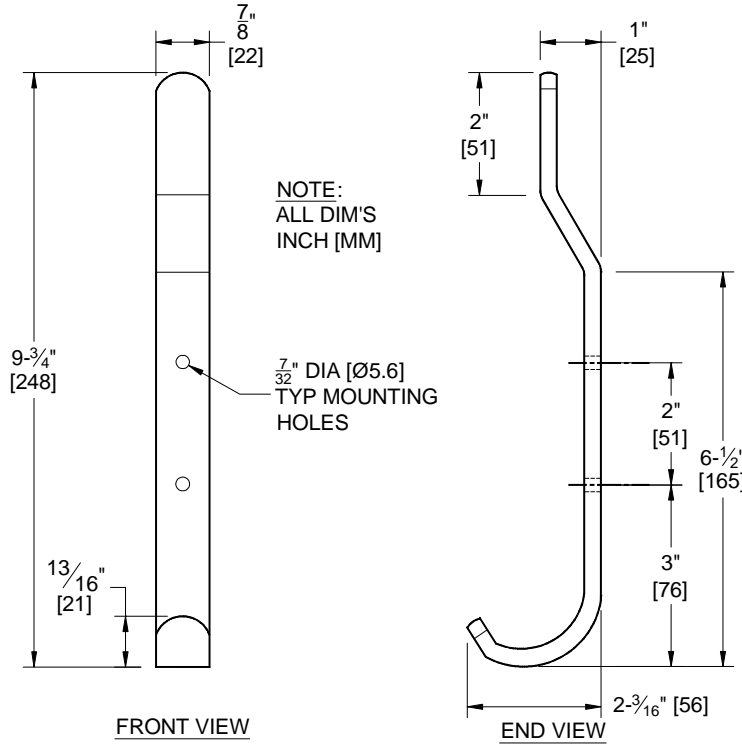
441 Saw Mill River Road, Yonkers, NY 10701 (914) 476-9000
www.americanspecialties.com

MODEL No: 1306

ISSUED: 01-87

REVISED: 06-09

HEAVY DUTY RAG AND TOWEL HOOK



SPECIFICATION

Heavy Duty Rag and Towel Hook shall be fabricated of 14 gauge type 304 stainless steel alloy 18-8 with satin finish and shall be protected during shipment with PVC film easily removable after installation.

Heavy Duty Rag and Towel Hook shall be Model N° 1306 as manufactured by American specialties, Inc., 441 Saw Mill River Road, Yonkers, New York 10701-4913

INSTALLATION

For general utility, mount hook 70" (1778) above finished floor (AFF) from bottom of hook. Surface mount and secure to wall with two (2) N°10 self-tapping screws (by others) through mounting holes provided. For compliance with ADA Accessibility Guidelines, install unit so that top of hook is 54" (1372) maximum AFF.

OPERATION

Rags and towels are placed on the hooks as needed.