



AMERICAN SPECIALTIES, INC.

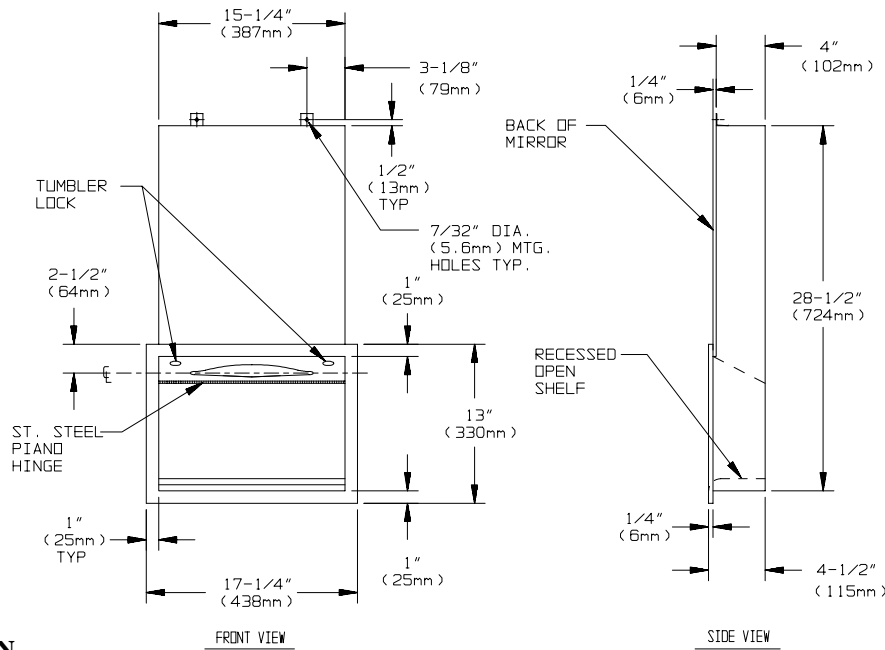
441 Saw Mill River Road, Yonkers, NY 10701 (914) 476-9000

MODEL No: 0436

ISSUED: 1-87

REVISED: 9-04

RECESSED CABINET WITH OPEN SHELF AND PAPER TOWEL DISPENSER



SPECIFICATION

Recessed Cabinet with Open Shelf and Paper Towel Dispenser with concealed body shall hold 800 standard multi-fold or 600 standard C-fold paper towels. Towel dispenser door and frame shall be fabricated of alloy 18-8 stainless steel, type 304, 22 gauge. Towel dispensing slot shall have a fully hemmed-in rolled edge for snag-free dispensing and user safety. Dispenser door shall be attached to cabinet at bottom with a full length 3/16" dia. (5mm) stainless steel multi-staked piano hinge. Towel dispenser shall be held closed with tumbler locks keyed alike to other ASI washroom equipment. Face trim shall be 1" (25mm) wide formed from one piece with no miters, welding or open seams and have 1/4" (6mm) square return to wall. Structural assembly of all components shall be of welded construction. All exposed surfaces shall be N° 4 satin finish and be protected during shipment with a PVC film easily removable after installation.

Recessed Cabinet with Open Shelf and Paper Towel Dispenser with concealed body shall be Model N°0436 as manufactured by American Specialties, Inc., 441 Saw Mill River Road, Yonkers, New York 10701-4913

INSTALLATION

Unit is recessed mounted in wall using N° 10 self tapping screws (by others) through concealed mounting holes provided. For compliance with ADA Accessibility Guidelines, unit should be installed so that towel dispenser slot is 54" (1372mm) maximum above finished floor (AFF) if clear floor side reach access is provided or 48" (1219mm) maximum AFF if clear floor forward reach access only is provided. Note that bottom of RWO is 3/4" (19mm) above bottom of unit. If unit is to be installed behind mirror, height is governed by location of bottom edge of reflecting surface.

Rough Wall Opening (RWO) required is15-3/4" W x 29-1/2" H x 4-1/4"D minimum (400mm x 749mm x 108mm).

Please note: because unit works in conjunction with the installation of a mirror, make sure that face of cabinet sleeve aligns with finished wall. If mirror has hanging strap brackets (ie: model N° 0600) take care not to attach into cabinet body.

OPERATION

Towels are self-feeding until supply is depleted. Unit may be reloaded easily by opening door with a partial load in-place and will continue to feed properly.

OPTIONS

See **OPTIONS SECTION** for available combinations of configurations.