



AMERICAN SPECIALTIES, INC.

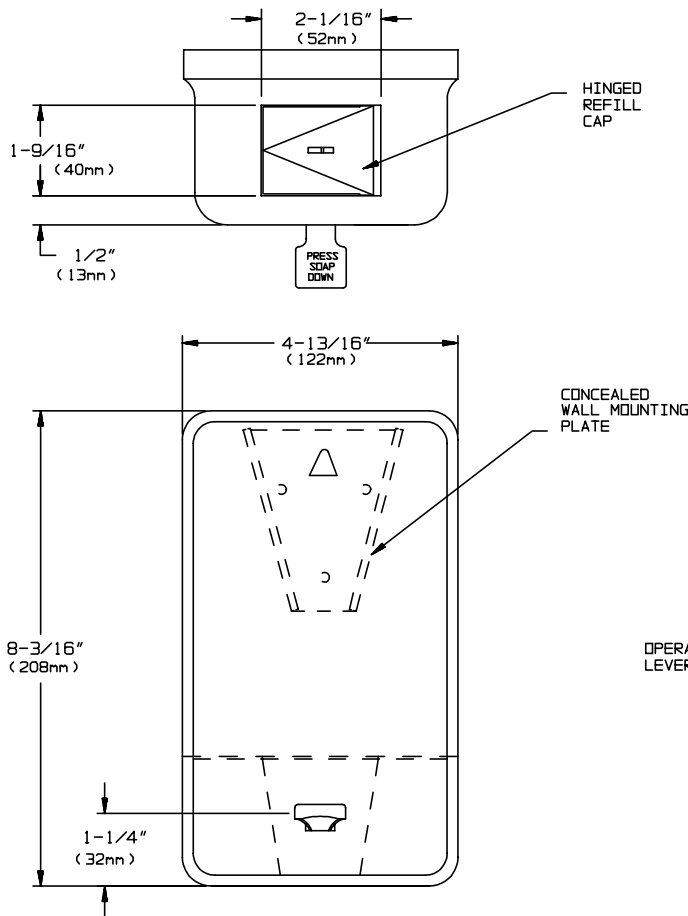
441 Saw Mill River Road, Yonkers, NY 10701 (914) 476-9000

MODEL No: 0337

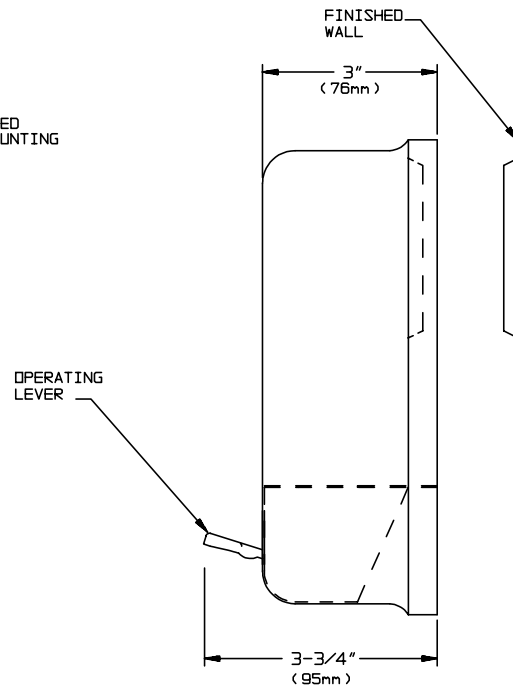
ISSUED: 1-87

REVISED: 7-04

POWDERED SOAP DISPENSER



DISCONTINUED
as of August 2015



SPECIFICATION

Powdered Soap Dispenser shall hold and dispense 32 oz (946 ml) of dry powder or granular aggregates. Unit shall have tank seam continuously welded and silicone sealed and shall be fabricated of alloy 18-8 stainless steel type 304 N^o20 gauge with N^o 4 satin finish on all exposed surfaces. Dispenser shall be mounted on a stainless steel interlocking wedge bracket (supplied) and be locked in place by a sealing screw (supplied) installed through back under vandal-resistant refill cap. Wall mounting hardware shall be provided.

Powdered Soap Dispenser shall be Model N^o 0337 as manufactured by American Specialties, Inc. 441 Saw Mill River Road Yonkers, New York 10701-4913.

INSTALLATION

For general utility mount unit 42" (1067mm) above finished floor (AFF) from bottom of unit or 6" (152mm) above wash basin. Surface mount bracket to wall with N^o8 self-tapping screws (supplied) through mounting holes. Engage receiver on back of unit to bracket and lock in place with sealing screw installed through back under refill cap. For compliance with ADA Accessibility Guidelines, install unit so that dispenser lever is 54" (1372mm) maximum AFF if clear floor side reach access is provided or 48" (1219mm) maximum AFF if clear floor forward reach access is only provided or 46" (1168mm) maximum AFF if side reach over obstruction (i.e. vanity) is only provided.

OPERATION

Powdered soap is dispensed by alternately manually depressing and releasing the actuator tab. To refill the unit, unlock the refill cap with the special key (supplied) and reload as required. Tank supply is replenished on a cycle determined by maintenance needs.

Accessory Specialties

AMERICAN DISPENSER

Desert Ray Products

WATROUS INC.