

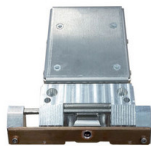


# SPECTRO MIDEX · MID05


## Measuring chamber

Photo Foto	Description Bezeichnung
	PARTS SET DETECTOR PROTECTION TEILESATZ DETEKTORSCHUTZ <b>71000764</b>
	COLLIMATOR CHANGER/ SPARE PART/ CUBE XEP06D AND MIDEX MID05 KOLLIMATORSCHIEBER/ ERSATZTEIL/ CUBE XEP06D UND MIDEX MID05 <b>75260912</b>

## Detection system

Photo Foto	Description Bezeichnung
	X-CHANGE DETECTION SYSTEM AMPTEK 20MM2/ WITH DETECTOR PROTECTION/ MID05 AUSTAUSCH DETEKTIONSSYSTEM AMPTEK 20MM2/ MIT DETEKTORSCHUTZ/ MID05 <b>77000922X</b>

## Electr. components

Photo Foto	Description Bezeichnung
	FILTER MAINS/ 230V/ 10A/ H+L FILTER NETZ/ 250V/ 10A/ H+L <b>57004040</b>

## SPECTRO MIDEX · MID05

---

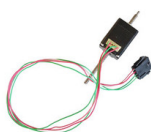


MOTOR SERVO/ 4.8-6V/ 2.4-4.1KG/CM

MOTOR SERVO/ 4,8-6V/ 2,4-4,1KG/CM

**57007235**

---



MOTOR FILTER COLLIMATOR CHANGER

MOTOR FILTER-KOLLIMATOR-WECHSLER

**75170846**

---



LASER MODULE/ 635NM/ F=77MM +/-5MM

LASER MODUL/ 635NM/ F=77MM +/-5MM

**77070827**

---

### Electr. assemblies, boards

---

Photo  
Foto

Description  
Bezeichnung



CAMERA REPLACEMENT KIT FOR XEP06D/MID05

KAMERA ERSATZ KIT XEP06/MID05

**71001043**

---



FRONTEND DPP/ MOUNTING

FRONTEND DPP/ ZUSAMMENBAU

**75260857**

---



READOUT SYSTEM/ DMB/ XRF/ DPP

AUSLESESYSTEM/ DMB/ XRF/ DPP

**76020023**

---

## SPECTRO MIDEX · MID05

---



POWER SUPPLY/ SP-320-24/ 88-264VAC/ 24VDC/ 13A

NETZTEIL/ SP-320-24/ 88-264VAC/ 24VDC/ 13A

**77020081**

---

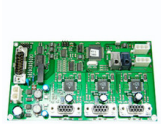


POWER SUPPLY/ INPUT 90-264VAC/ OUTPUT 5VDC 5A/+12VDC 3A/-12VDC 0.5A/  
55W

SCHALTNETZTEIL/ INPUT 90-264VAC/ OUTPUT 5VDC 5A/+12VDC 3A/-12VDC  
0,5A/ 55W

**77020132**

---



STEPPER MOTOR CONTROLLER/ DMB/ 3X/ 36V/3X1.5A

SCHRITTMOTORSTEUERUNG DMB/ DREIFACH/ 36V/3X1,5A

**EK0806--**

---

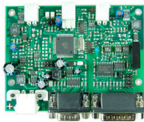


MEASURE/CONTROL BOARD WITH DMB/ WITH SYSTEMSOFTWARE ARC/SPARK

MESS-/REGELKARTE MIT DMB/ INCL. SYSTEMSOFTWARE ARC/SPARK

**EK0014B2**

---



CAMERA CONTROLLER

CAMERA CONTROLLER

**EK0801--**

---



DSP ETHERNET CONTROLLER

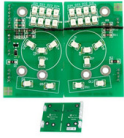
DSP ETHERNET CONTROLLER

**EK0808--**

---

## SPECTRO MIDEX · MID05

---



DISPLAY/ XRAY ON/SHUTTER  
DISPLAY/ XRAY ON/SHUTTER

**EK1401--**

---



ADAPTER RJ45 READOUT  
ADAPTER RJ45 READOUT

**EK1512--**

---



AMPLIFIER FAST-SDD/ CONNECTORS:20PIN DF13 - 15PIN HDSUB/ FOR  
DETECTORS WITH ASIC AND TEMP. DIODE/ USAGE FOR CONVERSION +5%

VERSTÄRKER FAST-SDD/ ANSCHLÜSSE: 20POL.DF13 - 15POL.HDSUB/ FÜR  
DETEKTOREN MIT ASIC UND TEMP. DIODE/ FÜR VERWENDUNG KONVERTIERUNG  
+5%

**EK1413-2**

---



READOUT SYSTEM DSP/DPP XRF  
AUSLESESYSTEM DSP/DPP XRF

**EK1901--**

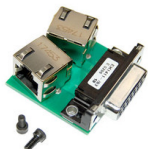
---



INTERFACE XRF GENERATOR DMB/INTERLOCK/ FOR UNIVERSAL PURPOSE  
INTERFACE XRF GENERATOR DMB/INTERLOCK/ FÜR UNIVERSELLE VERWENDUNG

**EK1415--**

---

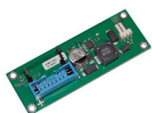


ADAPTER DMB RJ45  
ADAPTER DMB RJ45

**EK1411--**

---

# SPECTRO MIDEX · MID05



SERVO INTERFACE

SERVO INTERFACE

**EK1701--**

## Excitation system

Photo  
Foto

Description  
Bezeichnung



HV POWER SUPPLY MNX/ XCC/ 50KV/ 2MA/ 50W

HV NETZTEIL MNX/ XCC/ 50KV/ 2MA/ 50W

**77020818**



X-RAY TUBE MCBI 50B-70 MO/ W/O THERMAL CONDUCTION FILM/ HV CABLE LENGTH 400MM + APPROX. 200MM FOR GENERATOR CONNECTION/ FILAMENT CABLE LENGTH 700MM

RÖNTGENRÖHRE MCBI 50B-70 MO/ OHNE WÄRMELEITFOLIE/ HV-KABELLÄNGE 400MM + CA. 200MM FÜR GENERATORANSCHLUSS/ GLÜHFADENKABELLÄNGE 700MM

**77043144**

## Switches, cables, lamps

Photo  
Foto

Description  
Bezeichnung



SWITCH, KEY, SERIES:22

SCHALTER SCHLÜSSEL BAUREIHE 22

**65011053**



CABLE DPP-PREAMP/ L=350MM

KABEL DPP-PREAMP/ L=350MM

**75020835**

## SPECTRO MIDEX · MID05

---



CABLE READ OUT/ LVDS/ 25PIN  
KABEL AUSLESUNG/ LVDS/ 25POL.

**75120048**

---



CABLE USB 3.0/ A/B CONNECTOR/ L=2.0M  
KABEL USB3.0/ A/B STECKER/ L=2,0M

**75120084**

---



CABLE USB 3.0/ B FEMALE CONNECTOR TO MICRO B PLUG/ L=1.0M  
KABEL USB3.0/ B BUCHSE ANSCHRAUBBAR AN MICRO-B STECKER/ L=1,0M

**75120085**

---



CABLE PATCH/ RJ45-RJ45/ CAT5/ L=2.0M/ GREY  
KABEL PATCH/ RJ45-RJ45/ KAT.5/ L=2,0M/ GRAU

**75120077**

---



CABLE PATCH/ RJ45/ 0.3M/ CAT.5E  
KABEL PATCH/ RJ45/ 0,3M/ CAT.5E

**75120086**

---



CABLE SET BASIC/ MID05  
KABELSATZ BASIS/ MID05

**75170845**

---



CABLE SET INTERLOCK/ MID05  
KABELSATZ INTERLOCK/ MID05

**75170849**

---

## SPECTRO MIDEX · MID05

---



CABLE SERVO CONTROLLER  
KABEL SERVO-CONTROLLER  
**75170848**

---



CABLESET STEPPERMOTORS  
KABELSATZ SCHRITTMOTOREN  
**75170850**

---



CABLE LED SAMPLE ILLUMINATION/ CA10 FROM 75170845/ MID05  
KABEL LED PROBENBELEUCHTUNG/ KA10 AUS 75170845/ MID05  
**75170880**

---



CABLE SET POWER DISTRIBUTION/ MID05  
KABELSATZ NETZVERTEILUNG/ MID05  
**75170844**

---



CABLESET STEPPERMOTORS  
KABELSATZ SCHRITTMOTOREN  
**75170847**

---

### Fans, filter mats

---

Photo  
Foto

Description  
Bezeichnung



FAN PROTECTIVE GRID FOR FAN 60X60  
SCHUTZGITTER FÜR LÜFTER 60X60  
**46409018**

---

## SPECTRO MIDEX · MID05

---



PROTECTIVE GRID FOR FAN 80X80  
SCHUTZGITTER FÜR LÜFTER 80X80

**46409003**

---



FAN SCREEN 120X120MM/ EMC  
FILTERRAHMEN 120X120MM/ EMV

**47840044**

---



FAN ASSEMBLY/ 80X80X25/ 24V/ 117M3/H  
LÜFTER ASSEMBLY/ 80X80X25/ 24V/ 117M3/H

**75050043**

---



FAN XRAY TUBE/ 60X60X25MM/ 24V  
LÜFTER RÖNTGENRÖHRE/ 60X60X25MM/ 24V

**75170852**

---

### Miscellaneous

Photo  
Foto

Description  
Bezeichnung



PRESSURE SPRING/ D=3.2/ L0=13.1/ FN=2.51N  
DRUCKFEDER/ D=3,2/ L0=13,1/ FN=2,51N

**46508390**

---



SAMPLE AU STANDARDISATION/ OD=5MM  
PROBE AU STANDARDISIERUNG/ AD=5MM

**54470035**

---



## SPECTRO MIDEX · MID05

---

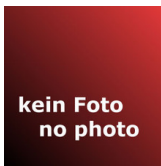


PARTS SET STEELROPE SET/ MIDEX MID05

TEILESATZ DRAHTSEILSET/ MIDEX MID05

**71001036**

---



MOUNTING PLATE WITH AU STANDARIZATION SAMPLE

MONTAGEPLATTE MIT PROBE AU STANDARDISIERUNG

**75360801**

---



USB-STICK/ 32GB/ USB3

USB-STICK/ 32GB/ USB3

**77030135**

---



LIBRARY FOR QUANTIATIVE XRF ANALYSIS OF MULTILAYER THINFILM AND BULK SAMPLES

SOFTWARE BIBLIOTHEK FÜR QUAKNTITATIVE ANALYSE VON MULTILAYER DÜNNSCHICHTEN UND BULK PROBEN

**80013940**

---

### Accessories

---

Photo  
Foto

Description  
Bezeichnung

---



SAMPLE SUPPORT PLATE

PLATTE PROBENAUFBLAGE

**47250767**

---

## SPECTRO MIDEX · MID05

---



ACCU UNIT 4X12V/ 34W/ / (ABCE1102-11/-22) / COMPATIBLE WITH 77020130,  
77020131

AKKUPACK 4X12V/ 34W / (ABCE1102-11/-22) / KOMPATIBEL MIT 77020130,  
77020131

**69001006**

---



ACCU UNIT 2X12V/ 11A/ FOR 77020082+...3 (ABCE1100-11/-22)

AKKUPACK 2X12V/ 11A/ FÜR 77020082+...3 (ABCE1100-11/-22)

**69001005**

---



MULTIPLE SOCKET WITH EMERGENCY SWITCH

STECKDOSENLEISTE MIT NOT/AUS

**75040043**

---



POWER CABLE/ 250VAC/ 10/16A/ L=2.0M/ CEE7/7 TO C13/ BLACK/ GERMAN  
SCHUKO

NETZKABEL/ 250VAC/ 10/16A/ L=2,0M/ CEE 7/7 AUF C13/ SCHWARZ/ SCHUKO

**75110006**

---



POWER CABLE/ 125VAC/ 10A/ L=2.0M/ NEMA 5-15 TO C13/ BLACK/ US-  
STANDARD

NETZKABEL/ 125VAC/ 10A/ L=2,0M/ NEMA 5-15 AUF C13/ SCHWARZ/ US-NORM

**75110004**

---



SCISSOR LIFT TABLE/ 122X150X278MM

SCHERENHUBTISCH/ 122X150X278MM

**77060080**

---

## SPECTRO MIDEX · MID05

---



FELT PADS/ D22MM/ T3MM/ WHITE/ [50 PCS.]

FILZGLEITER/ D22MM/ T3MM/ WEISS/ [50 STK.]

**80002017**

---

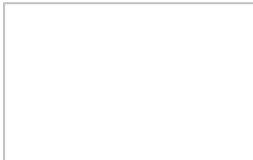


UNINTERRUPTIBLE POWER SUPPLY 120V/50-60Hz

UNTERBRECHUNGSFREIE STROMVERSORGUNG/ SPANNUNG: 120V/ FREQUENZ:  
50-60Hz/ LEISTUNG: 2000VA

**77020156**

---

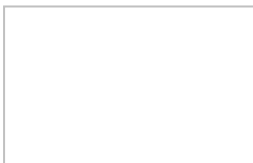


UNINTERRUPTIBLE POWER SUPPLY 230V/50-60Hz

UNTERBRECHUNGSFREIE STROMVERSORGUNG/ SPANNUNG: 230V/ Frequenz: 50-  
60Hz/ LEISTUNG: 2000VA

**77020155**

---



ACCU FOR USV ANTARES 12VDC/9AH / COMPATIBLE WITH 77020155, 77020156

AKKU FÜR USV ANTARES 12VDC/9AH / KOMPATIBEL MIT 77020155, 77020156

**69001009**

---