

SPECTROLAB · LAVM12

Consumables and wear parts

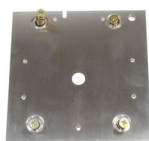
| Photo Foto | Description Bezeichnung |
|---|---|
|  | <p>ELECTRODE TUNGSTEN/ D6.15X56/ DOUBLE 90° SHARPENED</p> <p>ELEKTRODE WOLFRAM/ D6,15X56/ BEIDSEITIG 90° ANGESPITZT</p> <p>46901006</p> |
|  | <p>PIN ELECTRODE/ 0.5X50MM/ FOR PART 75260102+75360110/ [10 PCS.]</p> <p>PIN ELEKTRODE/ 0,5X50MM/ FÜR ARTIKEL 75260102+75360110/ [10 STK.]</p> <p>46901030</p> |
|  | <p>INSERT GLASS SPARK STAND/ FE-AUTOMATION/ INCL. PART. 47510177</p> <p>QUADRING 23.47X2.62</p> <p>EINSATZ GLAS FUNKENSTAND/ FE-AUTOMATION/ INKL. ART. 47510177</p> <p>QUADRING 23,47X2,62</p> <p>48207011</p> |
|  | <p>CERAMIC DISK/ AL2O3/ OD=18MM/ ID=6MM/ T=0.50MM/ FOR LAB+MAXX</p> <p>KERAMIKSCHEIBE/ AL2O3/ AD=18MM/ ID=6MM/ T=0,5MM/ FÜR LAB+MAXX</p> <p>48900016</p> |
|  | <p>SPARK STAND PLATE SMALL PARTS/ L=148/ B=140/ FOR 0.5MM CERAMIC DISK</p> <p>FUNKENSTANDSPLATTE KLEINTEILE/ L=148/ B=140/ FÜR 0,5MM</p> <p>KERAMIKSCHEIBEN</p> <p>75260155</p> |
|  | <p>PIN ELECTRODE WITH ADAPTER</p> <p>PINELEKTRODE MIT ADAPTER</p> <p>75260102</p> |

SPECTROLAB · LAVM12



SPARK STAND PLATE SMALL PARTS
FUNKENSTANDSPLATTE KLEINTEILE

75260150



SPARK STAND PLATE/ L=148/ B=140/ D=13
FUNKENSTANDSPLATTE L=148/ B=140/ D=13

75260148



FILTER CARTRIDGE/ 9-GV050-1/ FILTER UNIT 50 µM
FILTERPATRONE/ 9-GV050-1/ FILTEREINHEIT 50 µM

80000409



BRUSH STEEL WIRE/ L=100MM/ D=5MM / FOR ELECTRODE CLEANING
BÜRSTE STAHLDRAHT/ L=100MM/ D=5MM / FÜR ELEKTRODENREINIGUNG

80009001



MOLYBDENUM BRUSH/ L=100MM/ D=5MM/ WITH SINGLE ISOLATION
BÜRSTE MOLYBDÄNDRAHT/ L=100MM/ D=5MM/ FÜR ELEKTRODE MIT EINFACHER
ISOLIERUNG

80009169



INSERT QUARTZ GLASS/ SPARK STAND
EINSATZ QUARZGLAS/ FUNKENSTAND

48207013

Spark stand

Photo
Foto

Description
Bezeichnung

SPECTROLAB · LAVM12



HEXAGON SOCKET SCREWS M4*12/ST/VZ/DIN912 [5 PCS.]
SCHRAUBEN INNENSECHSKANT M4*12/STAHL/VZ DIN912 [5 STK.]

41118406E



HEXAGON SOCKET SET SCREW WITH FLAT POINT M4X4/ ZINC-PLATED
STIFT GEWINDE INNENSECHSKANT MIT KEGELKUPPE M4X4/ VERZINKT

41119401



HEXAGON SOCKET SET SCREWS WITH FLAT POINT M4X8/ ZINC-PLATED/ GREASE-FREE

STIFT GEWINDE INNENSECHSKANT KEGELKUPPE M4X8/ VZ/ NICHT GEFETTET

41219404



CLOSURE PLUG WITH KNURLED KNOB SERIES 2600
VERSCHLUSSZAPFEN MIT RÄNDELKOPF SERIE 2600

44404322



DETAINING DISC FOR LOCK PIN SERIES 2600
HALTESCHEIBE VERSCHLUSSZAPFEN SERIE 2600

44504004



TAPPET SERIES 2600 SPARK STAND [4 PCS.]
HALTENOCKEN FUNKENSTAND [4 STK.]

44304000



KNURLED SCREW
RÄNDELSCHRAUBE

46101471

SPECTROLAB · LAVM12



TAPPET SERIES 4002 SPARK STAND LAB/MAXx
HALTENOCKEN SERIE 4002 FUNKENSTAND LAB/MAXx

44804311



HOLDER WINDOW M14/ ID=11.5MM
HALTER FENSTER M14/ ID=11,5MM

46101475



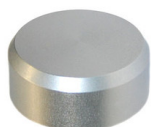
HEAD SHUTTER
SHUTTERKOPF

46101470



BRACKET WINDOWS CHANGER
WECHSELFENSTERAUFNAHME

46102980



INSTALLATION AID GLASS INSERT
EINBAUHILFE GLASEINSATZ

46101605



HEAT SINK ELECTRODE HOLDER SPECTROLAB
KÜHLKÖRPER ELEKTRODEHALTER SPECTROLAB

46102194



SPRING PRESSURE L0=51.3MM / OD=5.4MM/ C=0.113N/MM
FEDER DRUCK L0=51,3MM / AD=5,4MM/ C=0,113N/MM

46408075

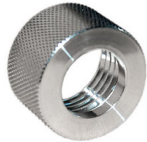
SPECTROLAB · LAVM12



SPACER SPARK STAND 2.5MM
SPACER FUNKENSTAND 2,5MM
46311249



CLAMPING RING ELECTRODE HOLDER
KLEMMRING ELEKTRODENHALTER
46102976



CAP NUT SPARC STAND EXHAUST
ÜBERWURFMUTTER AUSPUFF FUNKENSTAND
46301375



ELECTRODE HOLDER
HALTER ELEKTRODE
46301324



HOSE NIPPEL EXHAUST SPARK STAND
SCHLAUCHSTUTZEN AUSPUFF FUNKENSTAND
46301376



SPACER, 6ø/10 SPARK STAND, 3.4 MM
SPACER 3,4MM FUNKENSTAND 6ø/10
46311042



GUIDING PLATE FOR SHAFT SWITCHABLE MASK
FÜHRUNG SHUTTERWELLE
46502177

SPECTROLAB · LAVM12



PARTS SET QUARTER ROTARY FASTENER/ SPARK STAND PLATE/ LAS01

TEILESATZ VIERTELDREHSCHLÜSSE/ FUNKENSTANDSPLATTE/ LAS01

71000917



CYLINDER PNEUMATIC D20/LIFT35 SPECIAL VERSION NON-GREASE

PNEUMATIKZYLINDER D06/HUB10 STECKEINBAU

73008057



SHUTTER SPARK STAND/ COMPLETE ASSEMBLY/ LAB+MAXx

SHUTTER FUNKENSTAND/ KOMPLETT MONTIERT/ LAB+MAXx

75060206



CYLINDER SWITCHABLE SCREEN/ COMPLETE/ LAB+MAXx

ZYLINDER SCHALTBARE BLENDE/ KOMPLETT/ LAB+MAXx

75070201



SHAFT SWITCHABLE SCREEN COMPLETE LAB/MAXx

WELLE SCHALTBARE BLENDE/ KOMPLETT/ LAB+MAXx

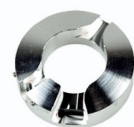
75070202



HOLDER EXCHANGEABLE WINDOW/ SPARK STAND/ LAVM1X+LMX

AUFNAHME WECHSELFENSTER/ FUNKENSTAND/ LAVM1X+LMX

75260128



INSERT 24MM/ INCL. PINS/ SPARK STAND

EINSATZ 24MM/ INKL. STIFTE/ FUNKENSTAND

75260129

SPECTROLAB · LAVM12



INSULATION SPARK STAND
ISOLIERUNG FUNKENSTAND

75260138



SPARK STAND LAVM12
FUNKENSTAND LAVM12

75260163



INSULATING BODY ELECTRODE HOLDER/ COMPLETE/ SPARK STAND/ LAB+MAXx
ISOLIERKÖRPER ELEKTRODENHALTER/ KOMPLETT/ FUNKENSTAND/ LAB+MAXx

75260110



HOLDER ELECTRODE COMPLETE LAB/MAXx
HALTER ELEKTRODE KOMPLETT LAB/MAXx

75260109



SPARK STAND INSERT FOR AUTMATION 24 MM WITH PIN
EINSATZ FUNKENSTAND AUTOMATION 24MM MIT STIFT

75260147

Optics, light path

Photo
Foto

Description
Bezeichnung



ADJUSTMENT PLATE CCD UNIT REAR
JUSTIERPLATTE ZEILENHALTER HINTEN

46112169

SPECTROLAB · LAVM12



PMT LOCKING DEVICE

PM-VERRIEGELUNG

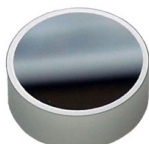
47250497



WASHER PTFE/ OD=22.4MM/ ID=19.5MM/ T=0.2MM/ [10 PCS.]

SCHEIBE PTFE/ AD=22,4MM/ ID=19,5MM/ T=0,2MM/ [10 STK.]

47311011



MIRROR SPHERIC OPTICS LAXM1X

SPIEGEL SPHÄRISCH OPTIK LAXM1X

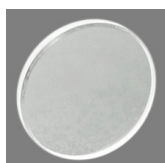
48107052



MIRROR PLANAR D35*12,5

SPIEGEL PLAN D35*12,5

48303025



WINDOW QUARTZ D=11MM/ T=1.25MM+/-0,05MM/ [3 PCS.]

FENSTER QUARZGLAS D=11MM/ T=1,25MM+/-0,05MM / [3 STK.]

48203006E



WINDOW MGF2 VUV/ D=22.3MM/ T=2.0MM

FENSTER MGF2 VUV/ D=22,3MM/ T=2,0MM

48303012

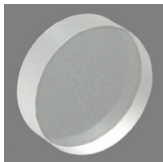


WINDOW/ CAF2/ D13.0/ T1.0/ >125NM

FENSTER/ CAF2/ D13,0/ T1,0/ >125NM

48303034

SPECTROLAB · LAVM12



WINDOW INFRASIL/ D=11MM/ T=3MM

FENSTER INFRASIL/ D=11MM/ T=3MM

48203007



AMECARE OPTIC KIT LAB LAXM1X

AMECARE OPTIC KIT LAB LAXM1X

71000619



UPGRADE KIT FOR CCD SENSOR NO.19/20/40 LAVM10/11: 19/20 LAVM12 : 40

AUFRÜSTSATZ FÜR CCD-ZEILE 19/20/40 LAVM10/11: 19/20 LAVM12 : 40

71000713



UPGRADE KIT AIR OPTICS LAVM12

AUFRÜSTSATZ LUFTOPTIK LAVM12

71000709



UPGRADE KIT FOR CCD SENSOR NO.01-18+41 / LAVM12

AUFRÜSTSATZ FÜR CCD-ZEILE 01-18+41 / LAVM12

71000711



SOCKET PM LAVM1X

SOCKEL PM LAVM1X

75030075

SPECTROLAB · LAVM12



PHOTOMULTIPLIER R6350-5 SENSITIVITY 370-650 A/LM TO 1000V COMPLETE WITH COVER/FILTER/O-RING

PHOTOMULTIPLIER R6350-5 EMPFINDLICHKEIT 370-650 A/LM BEI 1000V KOMPLETT MIT ABDECKUNG/FILTER/O-RING

75080165



PHOTOMULTIPLIER R10825 SELECTION IP @ 122nm: 31000A/W MIN. COMPLETE WITH COVER/O-RING

PHOTOMULTIPLIER R10825 SELECTION IP @ 122nm: 31000A/W MIN. KOMPLETT MIT ABDECKUNG/O-RING

75080168



PHOTOMULTIPLIER R6351/160-650NM/ANODE SENSITIVITY >800 A/LM AT 1000V COMPLETE WITH COVER/O-RING

PHOTOMULTIPLIER R6351/160-650NM/ANODEN- EMPFINDLICHKEIT >800 A/LM BEI 1000V KOMPLETT MIT ABDECKUNG/O-RING

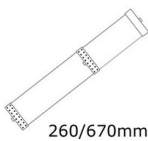
75080166



PHOTOMULTIPLIER R6350-5 SENSITIVITY 185-370 A/LM TO 1000V COMPLETE WITH COVER/O-RING

PHOTOMULTIPLIER R6350-5 EMPFINDLICHKEIT 185-370 A/LM BEI 1000V KOMPLETT MIT ABDECKUNG/O-RING

75080164



CABLE FOR SENSOR NO.05+06/ LAVM12

KABEL FÜR CCD-ZEILE 05+06/ LAVM12

75110132

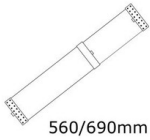


PHOTOMULTIPLIER R6354/160-320NM/ANODE SENSITIVITY >400000 A/W AT 1000V COMPLETE WITH COVER/O-RING

PHOTOMULTIPLIER R6354/160-320NM/ANODEN- EMPFINDLICHKEIT >400000 A/W BEI 1000V KOMPLETT MIT ABDECKUNG/O-RING

75080167

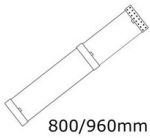
SPECTROLAB · LAVM12



CABLE FOR SENSOR NO.03+04/ LAVM12

KABEL FÜR CCD-ZEILE 03+04/ LAVM12

75110131



CABLE FOR SENSOR NO.11+12/ LAVM12

KABEL FÜR CCD-ZEILE 11+12/ LAVM12

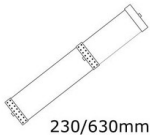
75110135



PHOTOMULTIPLIER R6350-34 SENSITIVITY 370-650 A/LM AT 1000V COMPLETE WITH COVER/FILTER/O-RING

PHOTOMULTIPLIER R6350-34 EMPFINDLICHKEIT 370-650 A/LM BEI 1000V KOMPLETT MIT ABDECKUNG/FILTER/O-RING

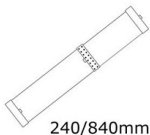
75080163



CABLE FOR SENSOR NO.01+02/ LAVM12

KABEL FÜR CCD-ZEILE 01+02/ LAVM12

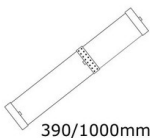
75110126



CABLE FOR SENSOR NO.09+10/ LAVM12

KABEL FÜR CCD-ZEILE 09+10/ LAVM12

75110134

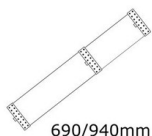


CABLE FOR SENSOR NO.13+14/ LAVM12

KABEL FÜR CCD-ZEILE 13+14/ LAVM12

75110136

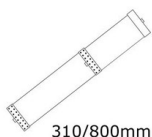
SPECTROLAB · LAVM12



CABLE FOR SENSOR NO.40+41/ LAVM12

KABEL FÜR CCD-ZEILE 40+41/ LAVM12

75110127



CABLE FOR SENSOR NO.07+08/ LAVM12

KABEL FÜR CCD-ZEILE 07+08/ LAVM12

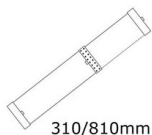
75110133



PHOTOMULTIPLIER R6350-34 SENSITIVITY 185-370 A/LM AT 1000V COMPLETE WITH COVER/O-RING

PHOTOMULTIPLIER R6350-34 EMPFINDLICHKEIT 185-370 A/LM BEI 1000V KOMPLETT MIT ABDECKUNG UND O-RING

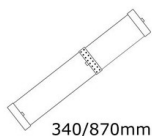
75080162



CABLE FOR SENSOR NO.15+16/ LAVM12

KABEL FÜR CCD-ZEILE 15+16/ LAVM12

75110137



CABLE FOR SENSOR NO.17+18/ LAVM12

KABEL FÜR CCD-ZEILE 17+18/ LAVM12

75110138



CCD UNIT Z05/ AIR OPTICS/ 292-320NM/ >=TXC03/ >=LMXX6/ LAVM11+12

HALTEREINHEIT Z05/ LUFTOPTIK/ 292-320NM/ >=TXC03/ >=LMXX6/ LAVM11+12

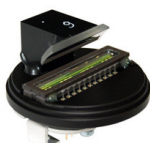
75180152

SPECTROLAB · LAVM12



CCD UNIT Z15/ AIR OPTICS/ LI 670NM/ >=TXC03/ >=LMXX6/ LAVM11+12
HALTEREINHEIT Z15/ LUFTOPTIK/ LI 670NM/ >=TXC03/ >=LMXX6/ LAVM11+12

75180161



CCD UNIT Z06/ AIR OPTICS/ 321-349NM/ >=TXC03/ >=LMXX6/ LAVM11+12
HALTEREINHEIT Z06/ LUFTOPTIK/ 321-349NM/ >=TXC03/ >=LMXX6/ LAVM11+12

75180153



CCD UNIT NO.13/ HYBRID/ UNCOATED/ MASKED / LAVM1X
HALTEREINHEIT Z13/ HYBRID/ UNBESCHICHTET / MASKIERT/ LAVM1X

75180218



CCD UNIT Z04/ AIR OPTICS/ 263-291NM/ >=TXC03/ >=LMXX6/ LAVM11+12
HALTEREINHEIT Z04/ LUFTOPTIK/ 263-291NM/ >=TXC03/ >=LMXX6/ LAVM11+12

75180151



SCANNER MIRROR KIT LAB STANDARD
SCANNERSPIEGEL LAB STANDARD

75180164



CCD UNIT NO.16/ HYBRID/ UNCOATED/ MASKED / LAVM1X
HALTEREINHEIT Z16/ HYBRID/ UNBESCHICHTET / MASKIERT/ LAVM1X

75180221



CCD UNIT Z13/ AIR OPTICS/ NA 589NM/ >=TXC03/ >=LMXX6/ LAVM11+12
HALTEREINHEIT Z13/ LUFTOPTIK/ NA 589NM/ >=TXC03/ >=LMXX6/ LAVM11+12

75180160

SPECTROLAB · LAVM12



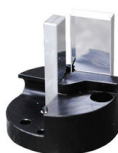
CCD UNIT NO.17/ HYBRID/ UNCOATED/ MASKED / LAVM1X
HALTEREINHEIT Z17/ HYBRID/ UNBESCHICHTET / MASKIERT/ LAVM1X
75180222



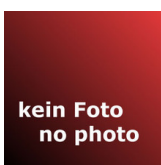
CCD UNIT Z03/ AIR OPTICS/ 233-262NM/ >=TXC03/ >=LMXX6/ LAVM11+12
HALTEREINHEIT Z03/ LUFTOPTIK/ 233-262NM/ >=TXC03/ >=LMXX6/ LAVM11+12
75180150



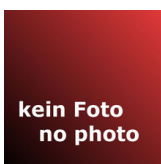
CCD UNIT NO.01/ HYBRID/ COATED/ UNMASKED / LAVM1X
HALTEREINHEIT Z01/ HYBRID/ BESCHICHTET / UNMASKIERT/ LAVM1X
75180260



SCANNER MIRROR KIT LAB SSE
SCANNERSPIEGEL LAB SSE
75180165



CCD UNIT NO.14/ HYBRID/ UNCOATED/ MASKED / LAVM1X
HALTEREINHEIT Z14/ HYBRID/ UNBESCHICHTET / MASKIERT/ LAVM1X
75180219



CCD UNIT NO.12/ HYBRID/ UNCOATED/ MASKED / LAVM1X
HALTEREINHEIT Z12/ HYBRID/ UNBESCHICHTET / MASKIERT/ LAVM1X
75180217



CCD UNIT Z07/ AIR OPTICS/ 350-378NM/ >=TXC03/ >=LMXX6/ LAVM11+12
HALTEREINHEIT Z07/ LUFTOPTIK/ 350-378NM/ >=TXC03/ >=LMXX6/ LAVM11+12
75180154

SPECTROLAB · LAVM12



CCD UNIT Z09/ AIR OPTICS/ 408-434NM/ >=TXC03/ >=LMXX6/ LAVM11+12
HALTEREINHEIT Z09/ LUFTOPTIK/ 408-434NM/ >=TXC03/ >=LMXX6/ LAVM11+12

75180156



CCD UNIT Z10/ AIR OPTICS/ 437-463NM/ >=TXC03/ >=LMXX6/ LAVM11+12
HALTEREINHEIT Z10/ LUFTOPTIK/ 437-463NM/ >=TXC03/ >=LMXX6/ LAVM11+12

75180157



CCD UNIT Z12/ AIR OPTICS/ 496-520NM/ WITH GLASS FILTER/ >=TXC03/
>=LMXX6/ LAVM11+12
HALTEREINHEIT Z12/ LUFTOPTIK/ 496-520NM/ MIT GLASFILTER/ >=TXC03/
>=LMXX6/ LAVM11+12

75180159



CCD UNIT NO.15/ HYBRID/ UNCOATED/ MASKED / LAVM1X
HALTEREINHEIT Z15/ HYBRID/ UNBESCHICHTET / MASKIERT/ LAVM1X

75180220



CCD UNIT NO.18/ HYBRID/ UNCOATED/ MASKED / LAVM1X
HALTEREINHEIT Z18/ HYBRID/ UNBESCHICHTET / MASKIERT/ LAVM1X

75180223



CCD UNIT NO.02/ HYBRID/ COATED/ UNMASKED / LAVM1X
HALTEREINHEIT Z02/ HYBRID/ BESCHICHTET / UNMASKIERT/ LAVM1X

75180261

SPECTROLAB · LAVM12



MIRROR DEFLECTION OPTICS LAXM1X

SPIEGEL ABLENK OPTIK LAXM1X

75180079

kein Foto
no photo

CCD UNIT NO.08/ HYBRID/ UNCOATED/ MASKED / LAVM1X

HALTEREINHEIT Z08/ HYBRID/ UNBESCHICHTET / MASKIERT/ LAVM1X

75180213

kein Foto
no photo

CCD UNIT NO.06/ HYBRID/ UNCOATED/ MASKED / LAVM1X

HALTEREINHEIT Z06/ HYBRID/ UNBESCHICHTET / MASKIERT/ LAVM1X

75180211

kein Foto
no photo

CCD UNIT NO.09/ HYBRID/ UNCOATED/ MASKED / LAVM1X

HALTEREINHEIT Z09/ HYBRID/ UNBESCHICHTET / MASKIERT/ LAVM1X

75180214

kein Foto
no photo

CCD UNIT NO.11/ HYBRID/ UNCOATED/ MASKED / LAVM1X

HALTEREINHEIT Z11/ HYBRID/ UNBESCHICHTET / MASKIERT/ LAVM1X

75180216



CCD UNIT Z08/ AIR OPTICS/ 379-407NM/ >=TXC03/ >=LMXX6/ LAVM11+12

HALTEREINHEIT Z08/ LUFTOPTIK/ 379-407NM/ >=TXC03/ >=LMXX6/ LAVM11+12

75180155



CCD UNIT NO.05/ HYBRID/ COATED/ UNMASKED / LAVM1X

HALTEREINHEIT Z05/ HYBRID/ BESCHICHTET / UNMASKIERT/ LAVM1X

75180264

SPECTROLAB · LAVM12



CCD UNIT NO.03/ HYBRID/ COATED/ UNMASKED / LAVM1X
HALTEREINHEIT Z03/ HYBRID/ BESCHICHTET / UNMASKIERT/ LAVM1X
75180262



CCD UNIT NO.04/ HYBRID/ UNCOATED / UNMASKED/ LAVM1X
HALTEREINHEIT Z04/ HYBRID/ UNBESCHICHTET / UNMASKIERT/ LAVM1X
75180280



CCD UNIT NO.05/ HYBRID/ UNCOATED / UNMASKED/ LAVM1X
HALTEREINHEIT Z05/ HYBRID/ UNBESCHICHTET / UNMASKIERT/ LAVM1X
75180281



CCD UNIT Z11/ AIR OPTICS/ 468-494NM/ WITH GLASS FILTER/ >=TXC03/
>=LMXX6/ LAVM11+12
HALTEREINHEIT Z11/ LUFTOPTIK/ 468-494NM/ MIT GLASFILTER/ >=TXC03/
>=LMXX6/ LAVM11+12
75180158

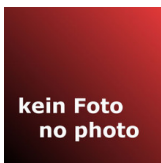


CCD UNIT NO.19(40)/ HYBRID/ UNCOATED / UNMASKED / LAVM10/11: NO.19 /
LAVM12 : NO.40
HALTEREINHEIT Z19(40)/ HYBRID / UNBESCHICHTET/ UNMASKIERT / LAVM10/11:
Z19 / LAVM12 : Z40
75180278



CCD UNIT NO.07/ HYBRID/ UNCOATED/ MASKED / LAVM1X
HALTEREINHEIT Z07/ HYBRID/ UNBESCHICHTET / MASKIERT/ LAVM1X
75180212

SPECTROLAB · LAVM12



CCD UNIT NO.10/ HYBRID/ UNCOATED/ MASKED / LAVM1X
HALTEREINHEIT Z10/ HYBRID/ UNBESCHICHTET / MASKIERT/ LAVM1X
75180215



CCD UNIT NO.04/ HYBRID/ COATED/ UNMASKED / LAVM1X
HALTEREINHEIT Z04/ HYBRID/ BESCHICHTET / UNMASKIERT/ LAVM1X
75180263



CCD UNIT NO.20(41)/ HYBRID/ UNCOATED / UNMASKED / LAVM10/11: NO.20 / LAVM12 : NO.41
HALTEREINHEIT Z20(41)/ HYBRID / UNBESCHICHTET/ UNMASKIERT / LAVM10/11: Z20 / LAVM12 : Z41
75180279



HOLDER FIBER OPTIC/ COMPLETELY ASSEMBLED
HALTER LWL/ KOMPLETT MONTIERT
75260131

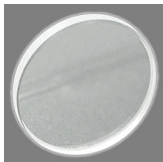


AMPLIFIER CCD 2MHZ
VERSTÄRKER CCD 2MHZ
EK0312--








LENS BICONVEX SUPRASIL/ D=11MM/ F=10MM/ MD=5.5MM/+0.1MM
LINSE BIKONVEX SUPRASIL/ D=11MM/ F=10MM/ MD=5,5MM/+0,1MM
48301006

SPECTROLAB · LAVM12



WINDOW MGF2/ D=13MM/ T1.5MM/ VUV/ <125NM
FENSTER MGF2/ D=13MM/ T=1,5MM/ VUV/ <125NM
48303013

Gas system, tubings, fittings

| Photo Foto | Description Bezeichnung |
|---|---|
|  | UNION JOINT BULKHEAD 6MM/6MM VERSCHRAUBUNG SCHOTT 6MM/6MM 44302214 |
|  | RING GASKET FOR PIPE OR TUBE/ OD=6MM/ [10 PCS.] DICHRING FÜR SCHLAUCH ODER ROHR/ AD=6MM/ [10 STK.] 44302014 |
|  | LOCKING PISTON BULKHEAD STUFF.BOX VERDREHSICHERUNG SCHOTTVERSCHRAUBUNG 44403026 |
|  | COUPLING, QUICK, SCREW-IN, PLUG D9 CONNECTION 6MM SCHNELLKUPPLUNG STECKER D6 ANSCHLUSS 6MM FÜR STICKSTOFF 44303012 |
|  | LOCKING RING FRONT/ 6MM/ BRASS BRIGHT/ [10 PCS.] KLEMMRING VORN/ 6MM/ MESSING BLANK/ [10 STK.] 44302050 |

SPECTROLAB · LAVM12



T-FITTING D6
VERSCHRAUBUNG T-STÜCK D6
44302288



QUICK-SNAP COUPLING, D6, CONNECTION 6MM
SCHNELLKUPPLUNG KÖRPER D6
44303010



FITTING DIFF. DIA UNION TEE/ 2X4MM/ 1X6MM
T-STECKVERBINDER MIT REDUZIERUNG/ 2X4MM/ 1X6MM
44702076



BULKHEAD FITTING ANGLED 6MM/6MM
VERSCHRAUBUNG SCHOTT WINKEL 6MM/6MM
44302508



FAST COUPLING BODY/ SCHOTT/ CONNECTION 6MM
SCHNELLKUPPLUNG KÖRPER/ SCHOTT/ ANSCHLUSS 6MM
44303018



PLUG FOR PUSH-IN/ 4MM/ PLASTIC
STOPFEN FÜR PUSH-IN/ 4MM/ KUNSTSTOFF
44702315



HOSE CLIP AD=16-25MM/ [5 PCS.]
KLEMME SCHLAUCH AD=16-25MM/ [5 STK.]
44903316

SPECTROLAB · LAVM12



PIPE CLAMP PLASTIC FOR 28MM TUBE
ROHRSCHELLE KUNSTSTOFF FÜR 28MM SCHLAUCH

44703370



TAP AERATOR WATER BOTTLE
PERLATOR WASSERFLASCHE

46301406



TUBE COPPER 6X1MM/ EN13348 QUALITY MEDICAL GASES / VACUUM ANNEALD R220/ COIL/ [25 M]
ROHR KUPFER 6X1/ EN13348 QUALITÄT MEDIZINALGASE/ VAKUUM WEICH R220/ RING/ [25 M]

46206001



HOSE PVC/ OD=14MM/ ID=10MM/ GLASS CLEAR
SCHLAUCH PVC/ AD=14MM/ ID=10MM/ GLASKLAR

47201019



TUBE PTFE/ OD=6MM/ ID=4MM/ WHITE / [5 M.]
SCHLAUCH PTFE/ AD=6MM/ ID=4MM/ WEISS / [5 M.]

47301021



TUBE PTFE/ OD=4MM/ ID=2MM/ WHITE/ [10 M.]
SCHLAUCH PTFE/ AD=4MM/ ID=2MM/ WEISS/ [10 M.]

47301001

SPECTROLAB · LAVM12



HOSE PVC/TEXTILE/ OD=20MM/ ID=13MM/ P=12BAR/ G1/2"

SCHLAUCH PVC/GEWEBE/ AD=20MM/ ID=13MM/ P=12BAR/ G1/2"

47601301



FILTER SINTERED BRONZE G1/4

FILTER SINTERBRONZE G1/4

73004540



RESTRICTOR TYPE C

DROSSELBLENDE TYP C

73004536



RESTRICTOR TYPE D

DROSSELBLENDE TYP D

73004537



RESTRICTOR TYPE I

DROSSELBLENDE TYP I

73004539



RESTRICTOR TYPE B

DROSSELBLENDE TYP B

73004535



RESTRICTOR TYPE E

DROSSELBLENDE TYP E

73004538

SPECTROLAB · LAVM12



PARTICLE FILTER SYSTEM ARC/SPARC

PARTKELFILTERSYSTEM ARC/SPARC

75060226



ARGON VALVE BLOCK SMA3 FOR TUBING

VENTILBLOCK ARGON SMA3/ ROHRMONTAGE

75260168



OPTICS FLUSH KIT LAXM12

LEITUNGSSATZ ARGONSPÜLUNG OPTIK LAXM12

75370101



PUMP DIAPHRAGM 24VDC/ 0,65A/ P_{MAX} 2,4 BAR/ TYPE PM23089-86

PUMPE MEMBRAN 24VDC/ 0,65A/ P_{MAX} 2,4 BAR/ TYP PM23089-86

77060506



LOCKING RING BACK/ 6MM/ BRASS BRIGHT/ [10 PCS.]

KLEMMRING HINTEN/ 6MM/ MESSING BLANK/ [10 STK.]

44302051

Electr. Components

Photo
Foto

Description
Bezeichnung



STEPPER MOTOR 1,8A/0,005MM/STEP WITH CARRIER PLATE

SCHRITTMOTOR 1,8A/0,005MM/STEP MIT TRÄGERBLECH

57007344E

SPECTROLAB · LAVM12



FILTER MAINS/ 230V/ 10A/ H+L

FILTER NETZ/ 250V/ 10A/ H+L

57004040



BLADE FUSE AUTOMOTIVE 3A/ 32VDC/ 5X20MM/ [10 PCS.]

SICHERUNG FLACH KFZ 3A/ 32VDC/ 5X20MM/ [10 STK.]

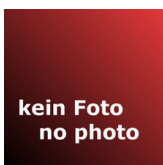
68005080



FUSE 6.3A/ 250V/ SLOW-BLOW/ 5X20MM/ [10 PCS.]

SICHERUNG 6,3A/ 250V/ TRÄGE/ 5X20MM/ [10 STK.]

68005883





PARTS KIT ALTERNATIVE PRESSURE SENSOR/ LAS01+LMX09 /REPLACEMENT FOR P/N 65041016

TS ALTERNATIVER DRUCKSENSOR/ LAS01+LMX09 / ERSATZ FÜR ART.-NR. 65041016

71000953

Electr. assemblies, boards

| Photo Foto | Description Bezeichnung |
|---|--|
|  | PS-READOUT STAR-BACKPLANE LAXM1X TS-AUSLESESYSTEM STERN-BACKPLANE LAXM1X 71000599 |
|  | PARTS SET PM SOCKET AND EK0603 TEILESATZ PM-SOCKEL UND EK0603 71000821 |

SPECTROLAB · LAVM12



SCANNER OPTICS LAVM1X INCL. MIRRORS /STD
SCANNER OPTIK LAVM1X MIT SPIEGELN /STD.

75080172



SCANNER OPTICS LAVM1X INCL. MIRRORS /SSE
SCANNER OPTIK LAVM1X MIT SPIEGELN /SSE

75080196



PLASMA GENERATOR/ LAVM1X/ \geq LMXX5
PLASMAGENERATOR/ LAVM1X/ \geq LMXX5

76020017



POWER SUPPLY/ SP-320-24/ 88-264VAC/ 24VDC/ 13A
NETZTEIL/ SP-320-24/ 88-264VAC/ 24VDC/ 13A

77020081



HIGH-VOLTAGE POWER SUPPLY 1250V/12W
NETZTEIL HV 1,25kV/12W

77020080



COOLING SYSTEM 400W/ 230V/ 50-60HZ
KÜHLSYSTEM 400W/ 230V/ 50-60HZ

77060076



STEPPER MOTOR CONTROLLER/ DMB/ 3X/ 36V/3X1.5A
SCHRITTMOTORSTEUERUNG DMB/ DREIFACH/ 36V/3X1,5A

EK0806--

SPECTROLAB · LAVM12



ADAPTER CCD

ADAPTER CCD

EK0219--



MEASURE/CONTROL BOARD WITH DMB/ WITH SYSTEMSOFTWARE ARC/SPARK

MESS-/REGELKARTE MIT DMB/ INCL. SYSTEMSOFTWARE ARC/SPARK

EK0014B2



INTEGRATOR 16-CHANNEL DIGITAL

INTEGRATOR 16-KANAL DIGITAL

EK0603--



DSP ETHERNET CONTROLLER

DSP ETHERNET CONTROLLER

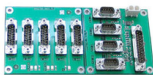
EK0808--



AMPLIFIER CCD 2MHZ

VERSTÄRKER CCD 2MHZ

EK0411--



HV AND DMB DISTRIBUTION BOARD

HV UND DMB VERTEILUNG

EK0612--



AMPLIFIER CCD 2MHZ

VERSTÄRKER CCD 2MHZ

EK0312--

SPECTROLAB · LAVM12



CONTROLLER DATA AQUISITION CCD/PM
 STEUERUNG DATENERFASSUNG CCD/PM

EK1301--



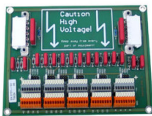
IGNITION ELECTRONIC/ LAVM1X/ >=LMXX5
 ZÜNDUNG ELEKTRONISCH/ LAVM1X/ >=LMXX5

EK0606--



AD CONVERTER DATA LOGGING CCD/PM ADC BOARD
 AD KONVERTER DATENERFASSUNG CCD/PM ADC BOARD

EK0311-2



PM-CONNECTION 40-CHANNEL LAVM1X
 PM-ANSCHLUSS 40-KANAL LAVM1X

EK0701--

Switches, cables, lamps

Photo
 Foto

Description
 Bezeichnung



BRACKET FOR CONNECTOR 16-PIN/ [5 PCS.]
 HALTEKLAMMER FÜR PFOSTENVERBINDUNG 16-POLIG/ [5 STK.]

44503008



TEMPERATURE SENSOR OPTICS LAVM1X
 TEMPERATURSENSOR OPTIK LAVM1X

75020197

SPECTROLAB · LAVM12



SIGNAL LIGHT "SPARKING"/ >=LMXX6
LEUCHTANZEIGE "SPARKING"/ >=LMXX6

75030081



SWITCH "ARROW" ASSEMBLED FOR LAVM10/11 AND LMX05/06
SCHALTER "BLITZ" KONFEKTIONIERT FÜR LAVM10/11 UND LMX05/06

75030131



LED FEED THROUGH CCD SEGMENT/19/20/ LAB2007/COLOR RED
LED DURCHFÜHRUNG CCD/19/20/LAB2007 FARBE ROT

75090137



CABLE USB/ PLUG A - PLUG MICRO B/ 5 PIN/ 1.0M/ GOLD PLATED
KABEL USB/ STECKER A - STECKER MICRO B/ 5-POL./ 1,0M/ VERGOLDET

75120115



CABLE USB/ PLUG A - PLUG MICRO B/ 5 PIN/ 0.6M/ GOLD PLATED
KABEL USB/ STECKER A - STECKER MICRO B/ 5-POL./ 0,6M/ VERGOLDET

75120114



LED FEED THROUGH PM SEGMENT BLUE LAVM10
LED DURCHFÜHRUNG PM BEREICH FARBE BLAU LAVM10

75090136



CABLE USB/ PLUG USB A - PLUG MICRO B/ 0.35M
USB KABEL/ STECKER USB A - STECKER MICRO B/ 0,35M

75120109

SPECTROLAB · LAVM12



LED FEED THROUGH CCD SEGMENT RED LAVM1X

LED DURCHFÜHRUNG CCD BEREICH FARBE ROT LAVM1X

75090135



CABLE POWER FS (75270182/CA10)

KABEL POWER FS (75270182/KA10)

75370111

Fiber optic cables

Photo
Foto

Description
Bezeichnung



FIBER GUIDE ANALYTICAL LAVM12

LICHTLEITER ANALYTISCH LAVM12

75190050

Fans, filter mats

Photo
Foto

Description
Bezeichnung



FILTER MAT G4/ 280X160X15MM

FILTERMATTE G4/ 280X160X15MM

47840039



FILTER MAT G4/305*85*15MM

FILTERMATTE G4/305*85*15MM

47840040

SPECTROLAB · LAVM12



FAN ASSEMBLY/ 120X120X38/ 24VDC/ 287M3/H
LÜFTER BAUGRUPPE/ 120X120X38/ 24VDC/ 287M3/H

75050040



FAN ASSEMBLY 80*80*32 / 24V / 54M³/H
LÜFTER BAUGRUPPE 80*80*32 / 24V / 54M³/H




75050038



FAN ASSEMBLY 120X120X38/ 24VDC/ 285M3/H/ PWM
LÜFTER BAUGRUPPE 120X120X38/ 24VDC/ 285M3/H/ PWM

75050041

O-rings

| Photo Foto | Description Bezeichnung |
|---|---|
|  | QUAD-RING/ 4.47X1.78/ VITON QUAD-RING 4,47X1,78/ VITON 47510041 |
|  | O-RING 58X4/ VITON/ 75 SHORE/ [5 PCS.] O-RING 58X4/ VITON/ 75 SHORE/ [5 STK.] 47510303E |
|  | O-RING 12X2/ VITON/ GREEN/ FKM80/ [5 PCS.] O-RING 12X2/ VITON/ GRÜN/ FKM80/ [5 STK.] 47510445E |

SPECTROLAB · LAVM12



O-RING 26X4/ VITON/ 75 SHORE/ [5 PCS.]

O-RING 26X4/ VITON/ 75 SHORE/ [5 STK.]

47510733E



O-RING 102X4/ NBR/ 70 SHORE

O-RING 102X4/ NBR/ 70 SHORE

47510785



O-RING 14X2/ VITON/ GREEN/ [5 PCS.]

O-RING 14X2/ VITON/ GRÜN/ [5 STK.]

47510215E



O-RING 25X2/ VITON/ [10 PCS.]

O-RING 25X2/ VITON/ [10 STK.]

47510137E



O-RING 20X1/ VITON/ 75 SHORE/ [5 PCS.]

O-RING 20X1/ VITON/ 75 SHORE/ [5 STK.]

47510275E



O-RING 7.65X1.78/ VITON/ GREEN/ [5 PCS.]

O-RING 7,65X1,78/ VITON/ GRÜN/ [5 STK.]

47510140E



O-RING 31X2/ VITON/ 75 SHORE/ [5 PCS.]

O-RING 31X2/ VITON/ 75 SHORE/ [5 STK.]

47510302E

SPECTROLAB · LAVM12



O-RING 22X2/ VITON/ [10 PCS.]

O-RING 22X2/ VITON/ [10 STK.]

47510673



O-RING/ 17X1,5/ VITON/ FKM/ 80 SHORE A/ [5 PCS.]

O-RING/ 17X1,5/ VITON/ FKM/ 80 SHORE A/ [5 STK.]

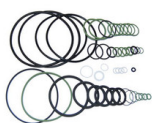
47510250E



SEALING KIT FOR LENS ASSEMBLY

DICHTUNGSSATZ FENSTERHALTER

75170141



MAINTENANCE KIT O-RINGS ARC/SPARK STATIONARY LAVM1X / >=LMXX5 / LMM01

WARTUNGSSATZ O-RINGE ARC/SPARK STATIONÄR LAVM1X / >=LMXX5 / LMM01

75370100

Miscellaneous

Photo
Foto

Description
Bezeichnung



STAR KNOB SCREW M6X16/ PLASTIC

GRIF F STERN SCHRAUB M6X16/ KST

42700508



RING TENSION PNEURO DN 20-25 KF A

SPANNRING-PNEURO-PAL FÜR VACUUMSCHLAUCH

44102005

SPECTROLAB · LAVM12



CABLE CLAMP WITH STRESS RELIEF
KABELKLEMME MIT ZUGENTLASTUNG

46503295



ADAPTER SET PRESSURE SENSOR LAVM1X
ADAPTERSET DRUCKSENSOR LAVM1X

71000344



VALVE LOCKING W/HANDWHEEL DN25KF FOR VACUUM SYSTEM
VENTIL HANDRAD DN25KF FÜR VAKUUMANWENDUNG

73004010



TOOL, SCREWDRIVER FOR LENSE ATTACHMENT ICP EOP
SCHRAUBWERKZEUG LINSENKLEMMUNG ICP EOP

75160521



SAMPLE CLAMP LAB/MAXx
NIEDERHALTER LAB/MAXx

75260111E



GASKET STRIP FLEXIBLE 1-70MM/6M
DICHTBAND FLEXIBEL 1-70MM

80002019



PLUGIN AUTOMATION/ LAXM12+LAS01
PLUGIN AUTOMATION/ LAXM12+LAS01

80020057E

SPECTROLAB · LAVM12



SHORT OPERATING INSTRUCTION LAXM12

KURZBEDIENUNGSANLEITUNG LAXM12

80011312



FILTER SCREW-IN TOOL

EINSCHRAUBWERKZEUG FILTER

80009179



ECCENTRIC RING 25MM/AL INCL. SEAL KF25/AL NEOPREN

ZENTRIERRING 25MM/AL INKL. DICHTUNG KF25/AL NEOPREN

44102003

Accessories

Photo
Foto

Description
Bezeichnung



ACCU UNIT 4X12V/ 34W/ / (ABCE1102-11/-22) / COMPATIBLE WITH 77020130,
77020131

AKKUPACK 4X12V/ 34W /(ABCE1102-11/-22) / KOMPATIBEL MIT 77020130,
77020131

69001006



ACCU UNIT 2X12V/ 11A/ FOR 77020082+...3 (ABCE1100-11/-22)

AKKUPACK 2X12V/ 11A/ FÜR 77020082+...3 (ABCE1100-11/-22)

69001005

SPECTROLAB · LAVM12



PRESSURE REDUCING VALVE ARGON CYLINDER/ W21.80X1/14"R/ CYLINDER PRESSURE MAX. 200 BAR/ OUTLET PRESSURE 0-10 BAR

DRUCKMINDERER ARGON-FLASCHE/ W21,80X1/14"R/ FLASCHENDRUCK MAX. 200 BAR/ AUSGANGSDRUCK 0-10 BAR

73003010



PRESSURE REDUCING VALVE OXIGEN CYLINDER/ G3/4"/ CYLINDER PREPRESSURE MAX. 200 BAR/ OUTLET PRESSURE 0-20 BAR / FOR ALL FORMER CIS STATES

DRUCKMINDERER SAUERSTOFF-FLASCHE/ G3/4"/ FLASCHENDRUCK MAX. 200 BAR/ AUSGANGSDRUCK 0-20 BAR/ FÜR ALLE EHEMALIGEN GUS-STAATEN

73003024



PARTS SET CORRUGATED HOSE FOR ARGON CONNECTION/ L=3M

TEILESATZ WELLSCHLAUCH ARGONANSCHLUSS/ L=3M

71000819



ADAPTER SMALL PARTS FOR LAB-F/L/M

KLEINTEILEADAPTER LAB-F/L/M

75060121



POWER CABLE/ 250VAC/ 10/16A/ L=2.0M/ CEE7/7 TO C13/ BLACK/ GERMAN SCHUKO

NETZKABEL/ 250VAC/ 10/16A/ L=2,0M/ CEE 7/7 AUF C13/ SCHWARZ/ SCHUKO

75110006



POWER CABLE/ 125VAC/ 10A/ L=2.0M/ NEMA 5-15 TO C13/ BLACK/ US-STANDARD

NETZKABEL/ 125VAC/ 10A/ L=2,0M/ NEMA 5-15 AUF C13/ SCHWARZ/ US-NORM

75110004

SPECTROLAB · LAVM12



TUBE ARGON CONNECTION/ OD=6MM/ ID=4MM/ CU/ L=3.125M/ INCL. CUTTING RING

LEITUNG ARGONANSCHLUSS/ AD=6MM/ ID=4MM/ CU/ L=3,125M/ INKL. SCHNEIDRING

75160022



UPGRADE KIT EXHAUST SPARK STAND/ LAB

AUFRÜSTSATZ ABSAUGUNG FUNKENSTAND/ LAB

75260121



ADAPTER KIT BASIC/

ADAPTERSATZ BASIS/

75260151



WIRE ADAPTER 3/ FOR WIRES D=0.8-10.0MM/ INCL. MANUAL

ADAPTER DRAHT 3/ FÜR DRÄHTE D=0,8-10,0MM/ INKL. BEDIENUNGSANLEITUNG

75360125



SHEET ADAPTER/ FOR SHEET THICKNESS 0.1-1.0MM/ INCL. MANUAL

ADAPTER BLECH/ FÜR BLECHSTÄRKE 0,1-1,0MM/ INKL. BEDIENUNGSANLEITUNG

75360126



WIRE ADAPTER 1/ FOR WIRES D=0.8-3.0MM/ INCL. MANUAL

ADAPTER DRAHT 1/ FÜR DRÄHTE D=0,8-3,0MM/ INKL. BEDIENUNGSANLEITUNG

75360124

SPECTROLAB · LAVM12



PC STAND W/O TRACKBALL/ LMXX7/LAXM12
PC-TISCH OHNE TRACKBALL/ LMXX7/LAXM12

77040131



PC STAND WITH TRACKBALL/ LMXX7/LAXM12
PC-TISCH MIT TRACKBALL/ LMXX7/LAXM12

77040132



COMPUTER DESK MOBILE/ HEIGHT ADJUSTABLE
PC-ARBEITSPLATZ MOBIL/ HÖHENVERSTELLBAR

77040199



DISC GRINDING MACHINE MANUALLY/ 230VAC/ 50/60HZ/ 1KVA/ VELCRO-FASTENING DISCS/ D=250MM

TELLERSCHLEIFMASCHINE MANUELL/ 230VAC/ 50/60HZ/ 1KVA/ KLETTSCHEIBEN/ D=250MM

77060088



ARGON CLEANING SYSTEM 230V/50-60HZ/ MP-2000/ INCL. GAS SIDE ENTRY KIT AND 2X 78999096 TUBE MOLECULAR SIEVE/ W/O 78999094 CARTRIDGE TITAN AND 78999095 CARTRIDGE COPPER-OXID

ARGONREINIGUNGSSYSTEM 230V/50-60HZ/ MP-2000/ INKL. GAS SIDE ENTRY KIT UND 2X 78999096 LEITUNG MOLEKULARSIEB/ OHNE 78999094 PATRONE TITAN UND 78999095 PATRONE KUPFER-OXID

78999120

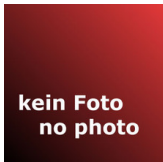


ARGON CLEANING SYSTEM 115V/50-60HZ/ MP-2000/ INCL. GAS SIDE ENTRY KIT AND 2X 78999096 TUBE MOLECULAR SIEVE/ W/O 78999094 CARTRIDGE TITAN AND 78999095 CARTRIDGE COPPER-OXID

ARGONREINIGUNGSSYSTEM 115V/50-60HZ/ MP-2000/ INKL. GAS SIDE ENTRY KIT UND 2X 78999096 LEITUNG MOLEKULARSIEB/ OHNE 78999094 PATRONE TITAN UND 78999095 PATRONE KUPFER-OXID

78999121

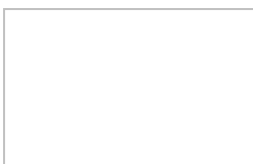
SPECTROLAB · LAVM12



SOFTWARE DIA LIGHT

SOFTWARE DIA LIGHT

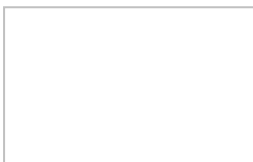
80111516



UNINTERRUPTIBLE POWER SUPPLY 120V/50-60Hz

UNTERBRECHUNGSFREIE STROMVERSORGUNG/ SPANNUNG: 120V/ FREQUENZ: 50-60Hz/ LEISTUNG: 2000VA

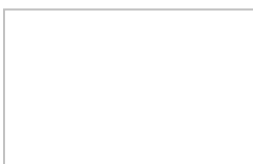
77020156



UNINTERRUPTIBLE POWER SUPPLY 230V/50-60Hz

UNTERBRECHUNGSFREIE STROMVERSORGUNG/ SPANNUNG: 230V/ Frequenz: 50-60Hz/ LEISTUNG: 2000VA

77020155





ACCU FOR USV ANTARES 12VDC/9AH / COMPATIBLE WITH 77020155, 77020156

AKKU FÜR USV ANTARES 12VDC/9AH / KOMPATIBEL MIT 77020155, 77020156

69001009

Housing

| Photo Foto | Description Bezeichnung |
|---|--|
|  | COVER E-ROOM FILTER HOUSING LAXM12 ABDECKUNG E-RAUM FILTER GEHÄUSE LAXM12 50010133 |
|  | COVER RIGHT SIDE REAR HOUSING LAXM12 ABDECKUNG SEITLICH HINTEN RECHTS GEHÄUSE LAXM12 50010142 |

SPECTROLAB · LAVM12



COVER LEFT SIDE REAR HOUSING LAXM12
ABDECKUNG SEITLICH HINTEN LINKS GEHÄUSE LAXM12
50010141



CONNECTOR PANEL HOUSING LAXM12
ANSCHLUSSFELD GEHÄUSE LAXM12
50010137



COVER TOP FRONT HOUSING LAXM12
ABDECKUNG VORNE OBEN GEHÄUSE LAXM12
50010136



COVER BOTTOM FRONT HOUSING LAXM12
ABDECKUNG VORNE UNTEN GEHÄUSE LAXM12
50010134



COVER ROOF HOUSING LAXM12
ABDECKUNG OBEN GEHÄUSE LAXM12
50010139



FILTERCOVER HOUSING LAXM12
FILTERABDECKUNG GEHÄUSE LAXM12
50010135



COVER BACK HOUSING LAXM12
ABDECKUNG HINTEN GEHÄUSE LAXM12
50010138

SPECTROLAB · LAVM12



DOOR RIGHT HOUSING LAXM12

TÜR RECHTS GEHÄUSE LAXM12

50010143



COVER LEFT SIDE FRONT HOUSING LAXM12

ABDECKUNG VORNE LINKE SEITE GEHÄUSE LAXM12

50010146



COVER SPARK STAND HOUSING LAXM12

ABDECKUNG FUNKENSTAND GEHÄUSE LAXM12

50010145



DOOR LEFT HOUSING LAXM12

TÜR LINKS GEHÄUSE LAXM12

50010144



COVER RIGHT SIDE FRONT HOUSING LAXM12

ABDECKUNG VORNE RECHTE SEITE GEHÄUSE LAXM12

50010147



OPTION WHEELS LAXM12

OPTION RÄDER LAXM12

71000644
