






# SPECTROLAB · LAVM11

## Consumables and wear parts

Photo Foto	Description Bezeichnung
	<p>ELECTRODE TUNGSTEN/ D6.15X56/ DOUBLE 90° SHARPENED ELEKTRODE WOLFRAM/ D6,15X56/ BEIDSEITIG 90° ANGESPITZT</p> <p><b>46901006</b></p>
	<p>PIN ELECTRODE/ 0.5X50MM/ FOR PART 75260102+75360110/ [10 PCS.] PIN ELEKTRODE/ 0,5X50MM/ FÜR ARTIKEL 75260102+75360110/ [10 STK.]</p> <p><b>46901030</b></p>
	<p>INSERT GLASS SPARK STAND/ FE-AUTOMATION/ INCL. PART. 47510177 QUADRING 23.47X2.62 EINSATZ GLAS FUNKENSTAND/ FE-AUTOMATION/ INKL. ART. 47510177 QUADRING 23,47X2,62</p> <p><b>48207011</b></p>
	<p>CERAMIC DISK/ AL2O3/ OD=18MM/ ID=6MM/ T=0.50MM/ FOR LAB+MAXX KERAMIKSCHEIBE/ AL2O3/ AD=18MM/ ID=6MM/ T=0,5MM/ FÜR LAB+MAXX</p> <p><b>48900016</b></p>
	<p>INSERT GLASS SPARK STAND 24/6.5MM FOR SN/ZN/PB BASE INCL. PART. 47510177 QUADRING 23,47*2,62 EINSATZ GLAS FUNKENSTAND 24/6.5 FÜR SN/ZN/PB-BASIS INKL. ART. 47510177 QUADRING 23,47*2,62</p> <p><b>48207009</b></p>

## SPECTROLAB · LAVM11

---



DISK, BORON NITRIDE OD18/ID5/TH0.95MM  
SCHEIBE BORNITRID AD18/ID5/T0,95MM DICKE=1MM ID=5MM

**48900001**

---



DISK BORON NITRIDE OD18/ ID8/ TH0.95MM/ FOR LAB  
SCHEIBE BORNITRID AD18/ ID8/ T0,95MM/ FÜR LAB

**48900002**

---



INSERT GLASS SPARK STAND 24/6.5MM INCL. PART. 47510177 QUADRING  
23,47\*2,62  
EINSATZ GLAS FUNKENSTAND 24/6.5 INKL. ART. 47510177 QUADRING 23,47\*2,62

**48207006**

---



INSERT GLASS SPARK STAND 24/6,5MM HEAVY METAL PIN-ELECTRODE INCL.  
PART. 47510177 QUADRING 23,47\*2,62  
EINSATZ GLAS FUNKENSTAND 24/6.5 SCHWERMETALL PIN-ELEKTRODE INKL. ART.  
47510177 QUADRING 23,47\*2,62

**48207008**

---



PIN ELECTRODE WITH ADAPTER  
PINELEKTRODE MIT ADAPTER

**75260102**

---

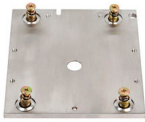


SPARK STAND PLATE LAB/MAXx FOR 0,5MM CERAMIC DISK  
FUNKENSTANDSPLATTE KLEINTEILE LAB/MAXx FÜR 0,5MM KERAMIK-SCHEIBE

**75260144**

---

## SPECTROLAB · LAVM11



SPARK STAND PLATE LAB/MAXx  
 FUNKENSTANDSPLATTE LAB/MAXx  
**75260142**



SPARK STAND PLATE SMALL PARTS LAB/MAXx  
 FUNKENSTANDSPLATTE KLEINTEILE/ DRÄHTE/DÜNNE BLECHE LAB/MAXx  
**75260143**



FILTER CARTRIDGE/ 9-GV050-1/ FILTER UNIT 50 µM  
 FILTERPATRONE/ 9-GV050-1/ FILTEREINHEIT 50 µM  
**80000409**



BRUSH STEEL WIRE/ L=100MM/ D=5MM / FOR ELECTRODE CLEANING  
 BÜRSTE STAHLDRAHT/ L=100MM/ D=5MM / FÜR ELEKTRODENREINIGUNG  
**80009001**



MOLYBDENUM BRUSH/ L=100MM/ D=5MM/ WITH SINGLE ISOLATION  
 BÜRSTE MOLYBDÄNDRAHT/ L=100MM/ D=5MM/ FÜR ELEKTRODE MIT EINFACHER  
 ISOLIERUNG  
**80009169**



SAMPLE RH18 + ICAL DATA CD/ BATCH 45 AND HIGHER  
 PROBE ICAL RH18 + ICAL DATEN CD/ CHARGE 45 UND HÖHER  
**80013903**

### Spark stand

Photo Foto	Description Bezeichnung
---------------	----------------------------

## SPECTROLAB · LAVM11

---



HEXAGON SOCKET SET SCREW WITH FLAT POINT M4X4/ ZINC-PLATED  
STIFT GEWINDE INNENSECHSKANT MIT KEGELKUPPE M4X4/ VERZINKT

**41119401**

---



SET SCREW HEXAGON SOCKET WITH FLAT POINT M3X4/ ST45H/ ZINC-PLATED/  
DIN913/ [10 PCS.]

STIFT GEWINDE I-6-KANT KEGELKUPPE M3X4/ ST45H/ VERZINKT/ DIN913/ [10  
STK.]

**41119301E**

---

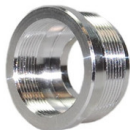


TAPPET SERIES 2600 SPARK STAND [4 PCS.]

HALTENOCKEN FUNKENSTAND [4 STK.]

**44304000**

---



HOLDER CALCITE WINDOW

HALTER KALZITFENSTER

**46101464**

---



KNURLED SCREW

RÄNDELSCHRAUBE

**46101471**

---



TAPPET SERIES 4002 SPARK STAND LAB/MAXx

HALTENOCKEN SERIE 4002 FUNKENSTAND LAB/MAXx

**44804311**

---

## SPECTROLAB · LAVM11

---



NUT UNION NIPPEL  
MUTTER ÜBERWURF ANSCHLUSSSTÜCK  
**46301002**

---



PLAID LENSE BRACKET  
ÜBERWURF LINSENAUFNAHME  
**46101463**

---



HOLDER WINDOW  
FENSTERAUFNAHME  
**46101462**

---



LENSE CLAMPING NUT  
LINSENKLEMMMUTTER  
**46101465**

---



LENSE BRACKET  
LINSENAUFNAHME  
**46101476**

---



SPRING PRESSURE L0=51.3MM / OD=5.4MM/ C=0.113N/MM  
FEDER DRUCK L0=51,3MM / AD=5,4MM/ C=0,113N/MM  
**46408075**

---



HOLDER WINDOW ID11.5 AD=M14  
HALTER FENSTER ID=11.5 AD=M14  
**46311166**

---

## SPECTROLAB · LAVM11

---



SHIELDING PLATE SPARK STAND LAVM1X

SCHIRMBLECH FUNKENSTAND LAVM1X

**46203076**

---



SPACER, 6ø/10 SPARK STAND, 3.4 MM

SPACER 3,4MM FUNKENSTAND 6ø/10

**46311042**

---



SHAFT SWITCHABLE MASK/ TYPE 2

WELLE SCHALTBARE BLENDE/ TYP 2

**46501059**

---



GUIDING PLATE FOR SHAFT SWITCHABLE MASK

FÜHRUNG SHUTTERWELLE

**46502177**

---



SPRING TENSION L0=20.2MM/ OD=5.5MM/ C=0,208N/MM/ [5 PCS.]

FEDER ZUG L0=20,2MM/ AD=5,5MM/ C=0,208N/MM/ [5 STK.]

**46408053**

---



SHUTTER FIBER OPTIC CABLE ON SPARK STAND/ LAB+MAXx

SHUTTER LICHTLEITER FUNKENSTAND/ LAB+MAXx

**75070200**

---



SHUTTER SPARK STAND/ COMPLETE ASSEMBLY/ LAB+MAXx

SHUTTER FUNKENSTAND/ KOMPLETT MONTIERT/ LAB+MAXx

**75060206**

---

## SPECTROLAB · LAVM11

---



CYLINDER SWITCHABLE SCREEN/ COMPLETE/ LAB+MAXx  
ZYLINDER SCHALTBARE BLENDE/ KOMPLETT/ LAB+MAXx

**75070201**

---



SHAFT SWITCHABLE SCREEN COMPLETE LAB/MAXx  
WELLE SCHALTBARE BLENDE/ KOMPLETT/ LAB+MAXx

**75070202**

---



REPLACEABLE WINDOW SPARK STAND LAB/MAXx  
WECHSELFENSTER FUNKENSTAND LAB/MAXx

**75160199**

---



INSERT 24MM/ INCL. PINS/ SPARK STAND  
EINSATZ 24MM/ INKL. STIFTE/ FUNKENSTAND

**75260129**

---



INSULATION SPARK STAND  
ISOLIERUNG FUNKENSTAND

**75260138**

---



INSULATING BODY ELECTRODE HOLDER/ COMPLETE/ SPARK STAND/ LAB+MAXx  
ISOLIERKÖRPER ELEKTRODENHALTER/ KOMPLETT/ FUNKENSTAND/ LAB+MAXx

**75260110**

---



HOLDER ELECTRODE COMPLETE LAB/MAXx  
HALTER ELEKTRODE KOMPLETT LAB/MAXx

**75260109**

---

## SPECTROLAB · LAVM11

---



SPARK STAND INSERT FOR AUTMATION 24 MM WITH PIN  
EINSATZ FUNKENSTAND AUTOMATION 24MM MIT STIFT

**75260147**

---



SPARE PART KIT SPARK STAND INSERT LAVXX/LMXX  
ERSATZTEILPAKET FUNKENSTANDEINSATZ LAVXX /LMXX

**75270106**

---

### Optics, light path

---

Photo  
Foto

Description  
Bezeichnung

---



HOLDER FAN B HYBRIDOPTIC AXIAL-FAN 120\*40  
HALTER LÜFTER B HYBRIDOPTIK AXIAL-LÜFTER 120\*40

**46103658**

---



ADJUSTING PLATE CCD UNIT/ LAB LAVM10+11  
JUSTIERPLATTE ZEILENHALTER/ LAB LAVM10+11

**46102902**

---



HOLDER FAN A HYBRIDOPTIC AXIAL-FAN 120\*40  
HALTER LÜFTER A HYBRIDOPTIK AXIAL-LÜFTER 120\*40

**46103657**

---



ADJUSTING SHIM FOR SENSOR CAP 150µm [20 PCS.]  
UNTERLEGBLECH ZEILENDECKEL 150µm [20 STÜCK]

**46403220**

---



## SPECTROLAB · LAVM11

---



PMT LOCKING DEVICE

PM-VERRIEGELUNG

**47250497**

---



WASHER PTFE/ OD=22.4MM/ ID=19.5MM/ T=0.2MM/ [10 PCS.]

SCHEIBE PTFE/ AD=22,4MM/ ID=19,5MM/ T=0,2MM/ [10 STK.]

**47311011**

---

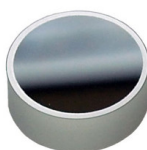


DISC PTFE/ OD=11MM/ ID=8MM/ T=0.5MM/ 47311001/ [10 PCS.]

SCHEIBE PTFE/ AD=11MM/ ID=8MM/ T=0,5MM/ 47311001/ [10 STK.]

**47311012**

---



MIRROR SPHERIC OPTICS LAXM1X

SPIEGEL SPHÄRISCH OPTIK LAXM1X

**48107052**

---

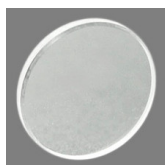


MIRROR PLANAR D35\*12,5

SPIEGEL PLAN D35\*12,5

**48303025**

---



WINDOW QUARTZ D=11MM/ T=1.25MM+/-0,05MM/ [3 PCS.]

FENSTER QUARZGLAS D=11MM/ T=1,25MM+/-0,05MM / [3 STK.]

**48203006E**

---



WINDOW MGF2 VUV/ D=22.3MM/ T=2.0MM

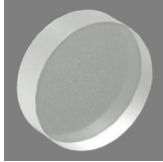
FENSTER MGF2 VUV/ D=22,3MM/ T=2,0MM

**48303012**

---

## SPECTROLAB · LAVM11

---



WINDOW INFRASIL/ D=11MM/ T=3MM

FENSTER INFRASIL/ D=11MM/ T=3MM

**48203007**

---



AMECARE OPTIC KIT LAB LAXM1X

AMECARE OPTIC KIT LAB LAXM1X

**71000619**

---

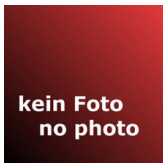


UPGRADE KIT FOR CCD SENSOR NO.19/20/40 LAVM10/11: 19/20 LAVM12 : 40

AUFRÜSTSATZ FÜR CCD-ZEILE 19/20/40 LAVM10/11: 19/20 LAVM12 : 40

**71000713**

---



UPGRADE KIT AIR OPTICS LAVM10/11

AUFRÜSTSATZ LUFTOPTIK LAVM10/11

**71000462**

---



UPGRADE KIT FOR SENSOR NO.01-18 / LAVM10/11

AUFRÜSTSATZ FÜR CCD-ZEILE 01-18 / LAVM10/11

**71000710**

---



SOCKET PM LAVM1X

SOCKEL PM LAVM1X

**75030075**

---

## SPECTROLAB · LAVM11

---



PHOTOMULTIPLIER R6350-5 SENSITIVITY 370-650 A/LM TO 1000V COMPLETE WITH COVER/FILTER/O-RING

PHOTOMULTIPLIER R6350-5 EMPFINDLICHKEIT 370-650 A/LM BEI 1000V KOMPLETT MIT ABDECKUNG/FILTER/O-RING

**75080165**

---



PHOTOMULTIPLIER R10825 SELECTION IP @ 122nm: 31000A/W MIN. COMPLETE WITH COVER/O-RING

PHOTOMULTIPLIER R10825 SELECTION IP @ 122nm: 31000A/W MIN. KOMPLETT MIT ABDECKUNG/O-RING

**75080168**

---



PHOTOMULTIPLIER R6351/160-650NM/ANODE SENSITIVITY >800 A/LM AT 1000V COMPLETE WITH COVER/O-RING

PHOTOMULTIPLIER R6351/160-650NM/ANODEN- EMPFINDLICHKEIT >800 A/LM BEI 1000V KOMPLETT MIT ABDECKUNG/O-RING

**75080166**

---

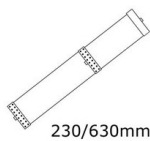


PHOTOMULTIPLIER R6350-5 SENSITIVITY 185-370 A/LM TO 1000V COMPLETE WITH COVER/O-RING

PHOTOMULTIPLIER R6350-5 EMPFINDLICHKEIT 185-370 A/LM BEI 1000V KOMPLETT MIT ABDECKUNG/O-RING

**75080164**

---



CABLE FOR SENSOR NO.01+02/ LAVM10/11

KABEL FÜR CCD-ZEILE 01+02/ LAVM10/11

**75110114**

---



PHOTOMULTIPLIER R6354/160-320NM/ANODE SENSITIVITY >400000 A/W AT 1000V COMPLETE WITH COVER/O-RING

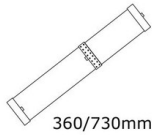
PHOTOMULTIPLIER R6354/160-320NM/ANODEN- EMPFINDLICHKEIT >400000 A/W BEI 1000V KOMPLETT MIT ABDECKUNG/O-RING

**75080167**

---

## SPECTROLAB · LAVM11

---



CABLE FOR SENSOR NO.17+18/ LAVM10/11

KABEL FÜR CCD-ZEILE 17+18/ LAVM10/11

**75110124**

---

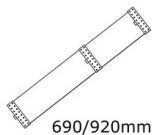


PHOTOMULTIPLIER R6350-34 SENSITIVITY 370-650 A/LM AT 1000V COMPLETE WITH COVER/FILTER/O-RING

PHOTOMULTIPLIER R6350-34 EMPFINDLICHKEIT 370-650 A/LM BEI 1000V KOMPLETT MIT ABDECKUNG/FILTER/O-RING

**75080163**

---

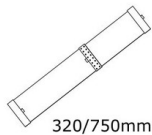


CABLE FOR SENSOR NO.19+20/ LAVM10/11

KABEL FÜR CCD ZEILE 19+20/ LAVM10/11

**75110115**

---

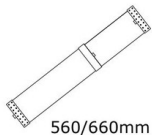


CABLE FOR SENSOR NO.15+16/ LAVM10/11

KABEL FÜR CCD-ZEILE 15+16/ LAVM10/11

**75110123**

---



CABLE FOR SENSOR NO.03+04/ LAVM10/11

KABEL FÜR CCD-ZEILE 03+04/ LAVM10/11

**75110117**

---



PHOTOMULTIPLIER R6350-34 SENSITIVITY 185-370 A/LM AT 1000V COMPLETE WITH COVER/O-RING

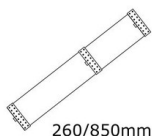
PHOTOMULTIPLIER R6350-34 EMPFINDLICHKEIT 185-370 A/LM BEI 1000V KOMPLETT MIT ABDECKUNG UND O-RING

**75080162**

---

## SPECTROLAB · LAVM11

---



CABLE FOR SENSOR NO.07+08/ LAVM10/11

KABEL FÜR CCD-ZEILE 07+08/ LAVM10/11

**75110119**

---

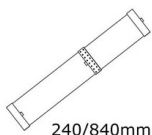


CABLE FOR SENSOR NO.13+14/ LAVM10/11

KABEL FÜR CCD-ZEILE 13+14/ LAVM10/11

**75110122**

---

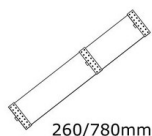


CABLE FOR SENSOR NO.09+10/ LAVM10/11

KABEL FÜR CCD-ZEILE 09+10/ LAVM10/11

**75110120**

---



CABLE FOR SENSOR NO.05+06/ LAVM10/11

KABEL FÜR CCD-ZEILE 05+06/ LAVM10/11

**75110118**

---



CABLE FOR SENSOR NO.11+12/ LAVM10/11

KABEL FÜR CCD-ZEILE 11+12/ LAVM10/11

**75110121**

---



CCD UNIT Z05/ AIR OPTICS/ 292-320NM/ >=TXC03/ >=LMXX6/ LAVM11+12

HALTEREINHEIT Z05/ LUFTOPTIK/ 292-320NM/ >=TXC03/ >=LMXX6/ LAVM11+12

**75180152**

---



CCD UNIT Z15/ AIR OPTICS/ LI 670NM/ >=TXC03/ >=LMXX6/ LAVM11+12

HALTEREINHEIT Z15/ LUFTOPTIK/ LI 670NM/ >=TXC03/ >=LMXX6/ LAVM11+12

**75180161**

---

## SPECTROLAB · LAVM11

---



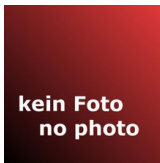
CCD UNIT NO.05/ HYBRID / UNCOATED/ MASKED/ LAVM10/11  
HALTEREINHEIT Z05/ HYBRID / UNBESCHICHTET/ MASKIERT/ LAVM10/11  
**75180209**

---



CCD UNIT Z06/ AIR OPTICS/ 321-349NM/ >=TXC03/ >=LMXX6/ LAVM11+12  
HALTEREINHEIT Z06/ LUFTOPTIK/ 321-349NM/ >=TXC03/ >=LMXX6/ LAVM11+12  
**75180153**

---



CCD UNIT NO.13/ HYBRID/ UNCOATED/ MASKED / LAVM1X  
HALTEREINHEIT Z13/ HYBRID/ UNBESCHICHTET / MASKIERT/ LAVM1X  
**75180218**

---



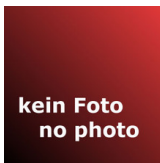
CCD UNIT Z04/ AIR OPTICS/ 263-291NM/ >=TXC03/ >=LMXX6/ LAVM11+12  
HALTEREINHEIT Z04/ LUFTOPTIK/ 263-291NM/ >=TXC03/ >=LMXX6/ LAVM11+12  
**75180151**

---



SCANNER MIRROR KIT LAB STANDARD  
SCANNERSPIEGEL LAB STANDARD  
**75180164**

---



CCD UNIT NO.16/ HYBRID/ UNCOATED/ MASKED / LAVM1X  
HALTEREINHEIT Z16/ HYBRID/ UNBESCHICHTET / MASKIERT/ LAVM1X  
**75180221**

---

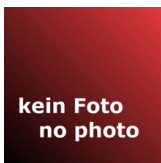


CCD UNIT Z13/ AIR OPTICS/ NA 589NM/ >=TXC03/ >=LMXX6/ LAVM11+12  
HALTEREINHEIT Z13/ LUFTOPTIK/ NA 589NM/ >=TXC03/ >=LMXX6/ LAVM11+12  
**75180160**

---

## SPECTROLAB · LAVM11

---



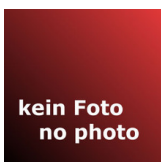
CCD UNIT NO.17/ HYBRID/ UNCOATED/ MASKED / LAVM1X  
HALTEREINHEIT Z17/ HYBRID/ UNBESCHICHTET / MASKIERT/ LAVM1X  
**75180222**

---



CCD UNIT Z03/ AIR OPTICS/ 233-262NM/ >=TXC03/ >=LMXX6/ LAVM11+12  
HALTEREINHEIT Z03/ LUFTOPTIK/ 233-262NM/ >=TXC03/ >=LMXX6/ LAVM11+12  
**75180150**

---



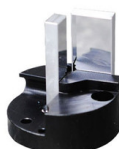
CCD UNIT NO.04/ HYBRID/ COATED/ MASKED / LAVM10/11  
HALTEREINHEIT Z04/ HYBRID/ BESCHICHTET / MASKIERT/ LAVM10/11  
**75180208**

---



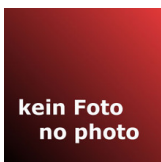
CCD UNIT NO.01/ HYBRID/ COATED/ UNMASKED / LAVM1X  
HALTEREINHEIT Z01/ HYBRID/ BESCHICHTET / UNMASKIERT/ LAVM1X  
**75180260**

---



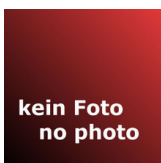
SCANNER MIRROR KIT LAB SSE  
SCANNERSPIEGEL LAB SSE  
**75180165**

---



CCD UNIT NO.14/ HYBRID/ UNCOATED/ MASKED / LAVM1X  
HALTEREINHEIT Z14/ HYBRID/ UNBESCHICHTET / MASKIERT/ LAVM1X  
**75180219**

---



CCD UNIT NO.05/ HYBRID / COATED/ MASKED/ LAVM10/11  
HALTEREINHEIT Z05/ HYBRID / BESCHICHTET/ MASKIERT/ LAVM10/11  
**75180210**

---

## SPECTROLAB · LAVM11

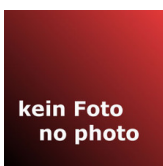
---



CCD UNIT NO.10/ HYBRID/ UNCOATED / UNMASKED/ LAVM10/11  
HALTEREINHEIT Z10/ HYBRID/ UNBESCHICHTET / UNMASKIERT/ LAVM10/11

**75180269**

---



CCD UNIT NO.12/ HYBRID/ UNCOATED/ MASKED / LAVM1X  
HALTEREINHEIT Z12/ HYBRID/ UNBESCHICHTET / MASKIERT/ LAVM1X

**75180217**

---



CCD UNIT NO.14/ HYBRID/ UNCOATED / UNMASKED/ LAVM10/11  
HALTEREINHEIT Z14/ HYBRID/ UNBESCHICHTET / UNMASKIERT/ LAVM10/11

**75180273**

---



CCD UNIT NO.17/ HYBRID/ UNCOATED / UNMASKED/ LAVM10/11  
HALTEREINHEIT Z17/ HYBRID/ UNBESCHICHTET / UNMASKIERT/ LAVM10/11

**75180276**

---



CCD UNIT Z07/ AIR OPTICS/ 350-378NM/ >=TXC03/ >=LMXX6/ LAVM11+12  
HALTEREINHEIT Z07/ LUFTOPTIK/ 350-378NM/ >=TXC03/ >=LMXX6/ LAVM11+12

**75180154**

---



CCD UNIT Z09/ AIR OPTICS/ 408-434NM/ >=TXC03/ >=LMXX6/ LAVM11+12  
HALTEREINHEIT Z09/ LUFTOPTIK/ 408-434NM/ >=TXC03/ >=LMXX6/ LAVM11+12

**75180156**

---



CCD UNIT NO.13/ HYBRID/ UNCOATED / UNMASKED/ LAVM10/11  
HALTEREINHEIT Z13/ HYBRID/ UNBESCHICHTET / UNMASKIERT/ LAVM10/11

**75180272**

---



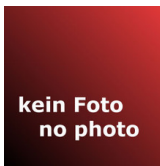
## SPECTROLAB · LAVM11

---



CCD UNIT Z10/ AIR OPTICS/ 437-463NM/ >=TXC03/ >=LMXX6/ LAVM11+12  
HALTEREINHEIT Z10/ LUFTOPTIK/ 437-463NM/ >=TXC03/ >=LMXX6/ LAVM11+12  
**75180157**

---



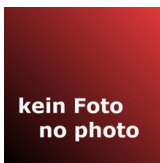
CCD UNIT NO.04/ HYBRID / UNCOATED/ MASKED/ LAVM10/11  
HALTEREINHEIT Z04/ HYBRID / UNBESCHICHTET/ MASKIERT/ LAVM10/11  
**75180207**

---



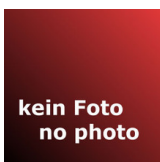
CCD UNIT Z12/ AIR OPTICS/ 496-520NM/ WITH GLASS FILTER/ >=TXC03/  
>=LMXX6/ LAVM11+12  
HALTEREINHEIT Z12/ LUFTOPTIK/ 496-520NM/ MIT GLASFILTER/ >=TXC03/  
>=LMXX6/ LAVM11+12  
**75180159**

---



CCD UNIT NO.15/ HYBRID/ UNCOATED/ MASKED / LAVM1X  
HALTEREINHEIT Z15/ HYBRID/ UNBESCHICHTET / MASKIERT/ LAVM1X  
**75180220**

---



CCD UNIT NO.18/ HYBRID/ UNCOATED/ MASKED / LAVM1X  
HALTEREINHEIT Z18/ HYBRID/ UNBESCHICHTET / MASKIERT/ LAVM1X  
**75180223**

---



CCD UNIT NO.02/ HYBRID/ COATED/ UNMASKED / LAVM1X  
HALTEREINHEIT Z02/ HYBRID/ BESCHICHTET / UNMASKIERT/ LAVM1X  
**75180261**

---

## SPECTROLAB · LAVM11

---



MIRROR DEFLECTION OPTICS LAXM1X

SPIEGEL ABLENK OPTIK LAXM1X

**75180079**

---



CCD UNIT NO.11/ HYBRID/ UNCOATED / UNMASKED/ LAVM10/11

HALTEREINHEIT Z11/ HYBRID/ UNBESCHICHTET / UNMASKIERT/ LAVM10/11

**75180270**

---



CCD UNIT NO.08/ HYBRID/ UNCOATED/ MASKED / LAVM1X

HALTEREINHEIT Z08/ HYBRID/ UNBESCHICHTET / MASKIERT/ LAVM1X

**75180213**

---



CCD UNIT NO.06/ HYBRID/ UNCOATED/ MASKED / LAVM1X

HALTEREINHEIT Z06/ HYBRID/ UNBESCHICHTET / MASKIERT/ LAVM1X

**75180211**

---



CCD UNIT NO.09/ HYBRID/ UNCOATED / UNMASKED/ LAVM10/11

HALTEREINHEIT Z09/ HYBRID/ UNBESCHICHTET / UNMASKIERT/ LAVM10/11

**75180268**

---



CCD UNIT NO.16/ HYBRID/ UNCOATED / UNMASKED/ LAVM10/11

HALTEREINHEIT Z16/ HYBRID/ UNBESCHICHTET / UNMASKIERT/ LAVM10/11

**75180275**

---



CCD UNIT NO.09/ HYBRID/ UNCOATED/ MASKED / LAVM1X

HALTEREINHEIT Z09/ HYBRID/ UNBESCHICHTET / MASKIERT/ LAVM1X

**75180214**

---

## SPECTROLAB · LAVM11

---



CCD UNIT NO.18/ HYBRID/ UNCOATED / UNMASKED/ LAVM10/11  
HALTEREINHEIT Z18/ HYBRID/ UNBESCHICHTET / UNMASKIERT/ LAVM10/11  
**75180277**

---



CCD UNIT NO.11/ HYBRID/ UNCOATED/ MASKED / LAVM1X  
HALTEREINHEIT Z11/ HYBRID/ UNBESCHICHTET / MASKIERT/ LAVM1X  
**75180216**

---



CCD UNIT NO.15/ HYBRID/ UNCOATED / UNMASKED/ LAVM10/11  
HALTEREINHEIT Z15/ HYBRID/ UNBESCHICHTET / UNMASKIERT/ LAVM10/11  
**75180274**

---



CCD UNIT NO.12/ HYBRID/ UNCOATED / UNMASKED/ LAVM10/11  
HALTEREINHEIT Z12/ HYBRID/ UNBESCHICHTET / UNMASKIERT/ LAVM10/11  
**75180271**

---



CCD UNIT Z08/ AIR OPTICS/ 379-407NM/ >=TXC03/ >=LMXX6/ LAVM11+12  
HALTEREINHEIT Z08/ LUFTOPTIK/ 379-407NM/ >=TXC03/ >=LMXX6/ LAVM11+12  
**75180155**

---



CCD UNIT NO.06/ HYBRID/ UNCOATED / UNMASKED/ LAVM10/11  
HALTEREINHEIT Z06/ HYBRID/ UNBESCHICHTET / UNMASKIERT/ LAVM10/11  
**75180265**

---



CCD UNIT NO.05/ HYBRID/ COATED/ UNMASKED / LAVM1X  
HALTEREINHEIT Z05/ HYBRID/ BESCHICHTET / UNMASKIERT/ LAVM1X  
**75180264**

---

## SPECTROLAB · LAVM11

---



CCD UNIT NO.03/ HYBRID/ COATED/ UNMASKED / LAVM1X  
HALTEREINHEIT Z03/ HYBRID/ BESCHICHTET / UNMASKIERT/ LAVM1X  
**75180262**

---



CCD UNIT NO.04/ HYBRID/ UNCOATED / UNMASKED/ LAVM1X  
HALTEREINHEIT Z04/ HYBRID/ UNBESCHICHTET / UNMASKIERT/ LAVM1X  
**75180280**

---



CCD UNIT NO.08/ HYBRID/ UNCOATED / UNMASKED/ LAVM10/11  
HALTEREINHEIT Z08/ HYBRID/ UNBESCHICHTET / UNMASKIERT/ LAVM10/11  
**75180267**

---



CCD UNIT NO.05/ HYBRID/ UNCOATED / UNMASKED/ LAVM1X  
HALTEREINHEIT Z05/ HYBRID/ UNBESCHICHTET / UNMASKIERT/ LAVM1X  
**75180281**

---



CCD UNIT Z11/ AIR OPTICS/ 468-494NM/ WITH GLASS FILTER/ >=TXC03/  
>=LMXX6/ LAVM11+12  
HALTEREINHEIT Z11/ LUFTOPTIK/ 468-494NM/ MIT GLASFILTER/ >=TXC03/  
>=LMXX6/ LAVM11+12  
**75180158**

---



CCD UNIT NO.19(40)/ HYBRID/ UNCOATED / UNMASKED / LAVM10/11: NO.19 /  
LAVM12 : NO.40  
HALTEREINHEIT Z19(40)/ HYBRID / UNBESCHICHTET/ UNMASKIERT / LAVM10/11:  
Z19 / LAVM12 : Z40  
**75180278**

---

## SPECTROLAB · LAVM11

---

kein Foto  
no photo

CCD UNIT NO.07/ HYBRID/ UNCOATED/ MASKED / LAVM1X  
HALTEREINHEIT Z07/ HYBRID/ UNBESCHICHTET / MASKIERT/ LAVM1X  
**75180212**

---

kein Foto  
no photo

CCD UNIT NO.10/ HYBRID/ UNCOATED/ MASKED / LAVM1X  
HALTEREINHEIT Z10/ HYBRID/ UNBESCHICHTET / MASKIERT/ LAVM1X  
**75180215**

---



CCD UNIT NO.04/ HYBRID/ COATED/ UNMASKED / LAVM1X  
HALTEREINHEIT Z04/ HYBRID/ BESCHICHTET / UNMASKIERT/ LAVM1X  
**75180263**

---



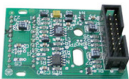
CCD UNIT NO.07/ HYBRID/ UNCOATED / UNMASKED/ LAVM10/11  
HALTEREINHEIT Z07/ HYBRID/ UNBESCHICHTET / UNMASKIERT/ LAVM10/11  
**75180266**

---



CCD UNIT NO.20(41)/ HYBRID/ UNCOATED / UNMASKED / LAVM10/11: NO.20 /  
LAVM12 : NO.41  
HALTEREINHEIT Z20(41)/ HYBRID / UNBESCHICHTET/ UNMASKIERT / LAVM10/11:  
Z20 / LAVM12 : Z41  
**75180279**

---



AMPLIFIER CCD 2MHZ  
VERSTÄRKER CCD 2MHZ  
**EK0411--**

---

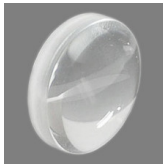
## SPECTROLAB · LAVM11

---



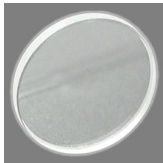
AMPLIFIER CCD 2MHZ  
 VERSTÄRKER CCD 2MHZ  
**EK0312--**

---



LENS BICONVEX SUPRASIL/ D=11MM/ F=10MM/ MD=5.5MM/+-.1MM  
 LINSE BIKONVEX SUPRASIL/ D=11MM/ F=10MM/ MD=5,5MM/+-.1MM  
**48301006**

---



WINDOW MGF2/ D=13MM/ T1.5MM/ VUV/ <125NM  
 FENSTER MGF2/ D=13MM/ T=1,5MM/ VUV/ <125NM  
**48303013**

---

### Gas system, tubings, fittings

---

Photo  
 Foto

Description  
 Bezeichnung



JOINT, THREADED, STRAIGHT, SCREW-IN SWAGELOK FITTING G1/8/D6  
 VERSCHR. GERADE EINSCHRAUB G1/8/D6  
**44302162**

---



GASKET AD6 FOR ARGON BLOCK [5 PCS.]  
 DICHRING AD6 FÜR ARGON BLOCK [5 STK.]  
**44302463**

---



THREAD. JOINT ELBOW SCREW-IN THREAD:1/8" FOR PIPE OR HOSE WITH  
 OD=6MM  
 VERSCHRAUBUNG WINKEL EINSCHR. R1/8" FÜR SCHLAUCH ODER ROHR MIT  
 AD=6MM  
**44302035**

---

## SPECTROLAB · LAVM11

---



RING GASKET FOR PIPE OR TUBE/ OD=6MM/ [10 PCS.]  
DICHRING FÜR SCHLAUCH ODER ROHR/ AD=6MM/ [10 STK.]

**44302014**

---



THREADED JOINT STRAIGHT SCREW-IN THREAD:1/8" FOR PIPE OR HOSE WITH  
OD=6MM

VERSCHRAUBUNG GERADE EINSCHR. R1/8" FÜR SCHLAUCH ODER ROHR MIT  
AD=6MM

**44302041**

---



COUPLING, QUICK, SCREW-IN, PLUG D9 CONNECTION 6MM

SCHNELLKUPPLUNG STECKER D6 ANSCHLUSS 6MM FÜR STICKSTOFF

**44303012**

---



BLIND CAP THREAD:M5 INCL. WASHER [10 PCS.]

BLINDSTOPFEN M5 INCL. DICHRING [10 STÜCK]

**44302059**

---



JOINT THREADED BULKHEAD D=6MM TUBE OR HOSE OD=6MM

VERSCHRAUBUNG SCHOTT D=6 SCHLAUCH OD.ROHR:AD=6MM

**44302028**

---



QUICK-SNAP COUPLING, D6, CONNECTION 6MM

SCHNELLKUPPLUNG KÖRPER D6

**44303010**

---

## SPECTROLAB · LAVM11

---



HOSE CLIP AD=12-20MM/ [10 PCS.]

KLEMME SCHLAUCH AD=12-20MM/ [10 STK.]

**44903302E**

---



TUBE COPPER 6X1MM/ EN13348 QUALITY MEDICAL GASES / VACUUM ANNEALD R220/ COIL/ [25 M]

ROHR KUPFER 6X1/ EN13348 QUALITÄT MEDIZINALGASE/ VAKUUM WEICH R220/ RING/ [25 M]

**46206001**

---



FLEXIBLE TUBE END PIECE Ø14

SCHLAUCHENDSTÜCK D14

**46301140**

---



TUBE PTFE/ OD=6MM/ ID=4MM/ WHITE / [5 M.]

SCHLAUCH PTFE/ AD=6MM/ ID=4MM/ WEISS / [5 M.]

**47301021**

---



HOUSING FILTER CARTRIDGE

GEHÄUSE FILTERPATRONE

**47250451**

---



TUBE PTFE/ OD=4MM/ ID=2MM/ WHITE/ [10 M.]

SCHLAUCH PTFE/ AD=4MM/ ID=2MM/ WEISS/ [10 M.]

**47301001**

---



## SPECTROLAB · LAVM11

---



HOSE PVC/TEXTILE/ OD=20MM/ ID=13MM/ P=12BAR/ G1/2"

SCHLAUCH PVC/GEWEBE/ AD=20MM/ ID=13MM/ P=12BAR/ G1/2"

**47601301**

---



REPLACEMENT KIT ARGON BLOCK LMX05+6/LAVM11

URS ARGONBLOCK LMX05+6/LAVM11

**71000622**

---



SPARE PART KIT FOR VALVE BLOCK 75260135 AND 75260168

BLENDEN/FILTER FÜR ARGONBLOCK 75260135 UND 75260168

**73004043**

---



VALVE BLOCK 24VDC/ARGON LAB-LAVM9 AND AUTOMATION

VENTILBLOCK 24VDC/ARGON LAB-LAVM9 UND AUTOMATION

**75160198**

---



OPTICS FLUSH KIT LAVM1X

LEITUNGSSATZ ARGONSPÜLUNG HYBRIDOPTIK LAVM1X

**75270144**

---



PUMP DIAPHRAGM 24VDC/ 0,65A/ P<sub>MAX</sub> 2,4 BAR/ TYPE PM23089-86

PUMPE MEMBRAN 24VDC/ 0,65A/ P<sub>MAX</sub> 2,4 BAR/ TYP PM23089-86

**77060506**

---



JOINT, THREADED, ELBOW, HINGED M5/LW

VERSCHRAUBUNG WINKELSCHWENK M5/LW4

**44102306**

---

## SPECTROLAB · LAVM11

---



T SCREW FITTING/ D=6MM  
T-VERSCHRAUBUNG/ D=6MM

**44302033**

---

### Electr. Components

---

Photo  
Foto

Description  
Bezeichnung

---



RELAY/ CARDS/ 24V/ 2X CHANGE OVER/ 250V/ 8A  
RELAIS/ KARTEN/ 24V/ 2X UM/ 250V/ 8A

**57002032**

---



STEPPER MOTOR 1,8A/0,005MM/STEP WITH CARRIER PLATE  
SCHRITTMOTOR 1,8A/0,005MM/STEP MIT TRÄGERBLECH

**57007344E**

---



FILTER MAINS/ 230V/ 10A/ H+L  
FILTER NETZ/ 250V/ 10A/ H+L

**57004040**

---



DIODE RECOVERY PLUGGABLE  
DIODE FREILAUF IM GEHÄUSE

**64004103**

---



FILTER HIGH VOLTAGE PROTECTOR/SURGE 230V/50HZ/16A  
FILTER BLITZSCHUTZ/SURGE 230V/50HZ/16A STROMSTOß 10KA/BAUFORM  
SICHERUNGSAUTOMAT

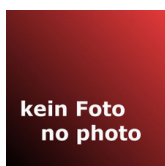
**57004035**

---

## SPECTROLAB · LAVM11


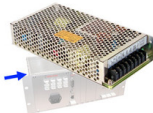




FUSE 5A/ 250V/ SLOW-BLOW/ 5X20MM/ [10 PCS.]  
 SICHERUNG 5A/ 250V/ TRÄGE/ 5X20MM/ [10 STK.]  
**68005882**



PARTS KIT ALTERNATIVE PRESSURE SENSOR/ LAS01+LMX09 /REPLACEMENT FOR P/N 65041016  
 TS ALTERNATIVER DRUCKSENSOR/ LAS01+LMX09 / ERSATZ FÜR ART.-NR. 65041016  
**71000953**

### Electr. assemblies, boards

Photo Foto	Description Bezeichnung
	PARTS SET PM SOCKET AND EK0603 TEILESATZ PM-SOCKEL UND EK0603 <b>71000821</b>
	PARTS SET POWER SUPPLY 77020144 TEILESATZ NETZTEIL 77020144 <b>71000916</b>
	SCANNER OPTICS LAVM1X INCL. MIRRORS /STD SCANNER OPTIK LAVM1X MIT SPIEGELN /STD. <b>75080172</b>
	SCANNER OPTICS LAVM1X INCL. MIRRORS /SSE SCANNER OPTIK LAVM1X MIT SPIEGELN /SSE <b>75080196</b>

## SPECTROLAB · LAVM11

---



PLASMA GENERATOR/ LAVM1X/ >=LMXX5

PLASMAGENERATOR/ LAVM1X/ >=LMXX5

**76020017**

---



POWER SUPPLY/ SP-320-24/ 88-264VAC/ 24VDC/ 13A

NETZTEIL/ SP-320-24/ 88-264VAC/ 24VDC/ 13A

**77020081**

---



HIGH-VOLTAGE POWER SUPPLY 1250V/12W

NETZTEIL HV 1,25kV/12W

**77020080**

---



COOLING SYSTEM MV 230V 50/60Hz FAN 24VDC

UMLUFTKÜHLER MIT MAGNETVENTIL 230V 50/60Hz LÜFTER 24VDC

**77060070**

---



STEPPER MOTOR CONTROLLER/ DMB/ 3X/ 36V/3X1.5A

SCHRITTMOTORSTEUERUNG DMB/ DREIFACH/ 36V/3X1,5A

**EK0806--**

---



TIMER BOARD COOLING SYSTEM 77060070

TIMER-KARTE KÜHLSYSTEM 77060070

**EK1201--**

---



MEASURE/CONTROL BOARD WITH DMB/ WITH SYSTEMSOFTWARE ARC/SPARK

MESS-/REGELKARTE MIT DMB/ INCL. SYSTEMSOFTWARE ARC/SPARK

**EK0014B2**

---

## SPECTROLAB · LAVM11

---



INTEGRATOR 16-CHANNEL DIGITAL  
INTEGRATOR 16-KANAL DIGITAL

**EK0603--**

---



DSP ETHERNET CONTROLLER  
DSP ETHERNET CONTROLLER

**EK0808--**

---



AMPLIFIER CCD 2MHZ  
VERSTÄRKER CCD 2MHZ

**EK0411--**

---



BUS READ OUT SYSTEM LAVM1X  
BUS AUSLESESYSYSTEM LAVM1X

**EK0605--**

---



HV AND DMB DISTRIBUTION BOARD  
HV UND DMB VERTEILUNG

**EK0612--**

---



CONTROLLER DATA AQUSSION CCD/PM CDA BOARD  
STEUERUNG DATENERFASSUNG CCD/PM

**EK0310--**

---



AMPLIFIER CCD 2MHZ  
VERSTÄRKER CCD 2MHZ

**EK0312--**

---

## SPECTROLAB · LAVM11

---



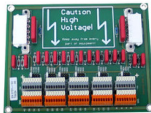
IGNITION ELECTRONIC/ LAVM1X/ >=LMXX5  
 ZÜNDUNG ELEKTRONISCH/ LAVM1X/ >=LMXX5  
**EK0606--**

---



AD CONVERTER DATA LOGGING CCD/PM ADC BOARD  
 AD KONVERTER DATENERFASSUNG CCD/PM ADC BOARD  
**EK0311-2**

---



PM-CONNECTION 40-CHANNEL LAVM1X  
 PM-ANSCHLUSS 40-KANAL LAVM1X  
**EK0701--**

---

### Switches, cables, lamps

---

Photo  
Foto

Description  
Bezeichnung



BRACKET FOR CONNECTOR 16-PIN/ [5 PCS.]  
 HALTEKLAMMER FÜR PFOSTENVERBINDUNG 16-POLIG/ [5 STK.]  
**44503008**

---



TEMPERATURE SENSOR OPTICS LAVM1X  
 TEMPERATURSENSOR OPTIK LAVM1X  
**75020197**

---



LED FEED THROUGH PM SEGMENT BLUE LAVM10  
 LED DURCHFÜHRUNG PM BEREICH FARBE BLAU LAVM10  
**75090136**

---

## SPECTROLAB · LAVM11

---



LED FEED THROUGH CCD SEGMENT RED LAVM1X  
 LED DURCHFÜHRUNG CCD BEREICH FARBE ROT LAVM1X  
**75090135**

---



CABLE POWER SPARK STAND/ LAVM10+11/ >=LMXX05  
 KABEL POWER FUNKENSTAND/ LAVM10+11/ >=LMXX5  
**75270134**

---

### Fiber optic cables

---

Photo  
Foto

Description  
Bezeichnung



FIBRE GUIDE ANALYTICAL 0,85M LAVM1X  
 LICHTLEITER ANALYTISCH 0,85M LAVM1X  
**75190044**

---

### Fans, filter mats

---

Photo  
Foto

Description  
Bezeichnung



FILTER AIR 186\*139,5 LAVM1X [2 PCS.]  
 FILTER LUFT 186\*139,5 LAVM1X [2 STÜCK]  
**47840015**

---



FILTER MAT PST290 250MM\*180MM  
 FILTERMATTE PST290 250MM\*180MM  
**47840029**

---

## SPECTROLAB · LAVM11



FAN ASSEMBLY 120X120X38/ 24VDC/ 285M3/H/ PWM  
 LÜFTER BAUGRUPPE 120X120X38/ 24VDC/ 285M3/H/ PWM  
**75050041**


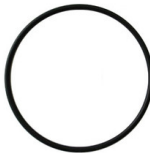



FAN ASSEMBLY/ 120X120X25MM/ 24V/ 225M3/H/ INCL. PLUG/ TYPE: 4414FN/2HP  
 LÜFTER ASSEMBLY/ 120X120X25MM/ 24V/ 225M3/H/ INCL. STECKER/ TYP:  
 4414FN/2HP  
**75050033**



FAN RADIAL ASSEMBLY 24V 255M3/H  
 LÜFTER RADIAL ASSEMBLY 24V 255M3/H  
**75050031**

### O-rings

Photo Foto	Description Bezeichnung
	O-RING 9X1.2/ VITON/ GREEN/ [5 PCS.] O-RING 9X1,2/ VITON/ GRÜN/ [5 STK.] <b>47510155E</b>
	O-RING/ 85X3.55/ NBR/ 70 SHORE/ [10 PCS.] O-RING/ 85X3,5/ NBR/ 70 SHORE/ [10 STK.] <b>47510219</b>
	QUAD-RING/ 4.47X1.78/ VITON QUAD-RING 4,47X1,78/ VITON <b>47510041</b>



## SPECTROLAB · LAVM11

---



O-RING 60\*6/VITON

O-RING 60\*6/VITON

**47510420**

---

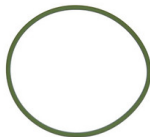


O-RING 16X1/ VITON/ 75 SHORE/ [5 PCS.]

O-RING 16X1/ VITON/ 75 SHORE/ [5 STK.]

**47510103E**

---



O-RING 75.87X2.62/ VITON/ GREEN/ [5 PCS.]

O-RING 75,87X2,62/ VITON/ GRÜN/ [5 STK.]

**47510134**

---



O-RING 20X1/ VITON/ 75 SHORE/ [5 PCS.]

O-RING 20X1/ VITON/ 75 SHORE/ [5 STK.]

**47510275E**

---



O-RING 31X2/ VITON/ 75 SHORE/ [5 PCS.]

O-RING 31X2/ VITON/ 75 SHORE/ [5 STK.]

**47510302E**

---



O-RING 22X2/ VITON/ [10 PCS.]

O-RING 22X2/ VITON/ [10 STK.]

**47510673**

---



SEALING KIT FOR LENS ASSEMBLY

DICHTUNGSSATZ FENSTERHALTER

**75170141**

---

## SPECTROLAB · LAVM11



MAINTENANCE KIT O-RINGS ARC/SPARK STATIONARY LAVM1X / >=LMXX5 / LMM01

WARTUNGSSATZ O-RINGE ARC/SPARK STATIONÄR LAVM1X / >=LMXX5 / LMM01

**75370100**



O-RING 6.75X1.78/ VITON/ GREEN/ [5 PCS.]

O-RING 6,75X1,78/ VITON/ GRÜN/ [5 STK.]

**47510126**

### Miscellaneous

Photo  
Foto

Description  
Bezeichnung



STAR KNOB SCREW M6X16/ PLASTIC

GRIF F STERN SCHRAUB M6X16/ KST

**42700508**



RING TENSION PNEURO DN 20-25 KF A

SPANNRING-PNEURO-PAL FÜR VACUUMSCHLAUCH

**44102005**



SPRING TENSION L0=25MM/ OD=18MM/ C=3,46N/MM/ FOR SAMPLE CLAMP/ [2 PCS.]

FEDER ZUG L0=25MM/ AD=18MM/ C=3,46N/MM/ FÜR NIEDERHALTER/ [2 STK.]

**46401044**



ADAPTER SET PRESSURE SENSOR LAVM1X

ADAPTERSET DRUCKSENSOR LAVM1X

**71000344**

## SPECTROLAB · LAVM11

---



VALVE LOCKING W/HANDWHEEL DN25KF FOR VACUUM SYSTEM  
VENTIL HANDRAD DN25KF FÜR VAKUUMANWENDUNG

**73004010**

---



GROUND PIN SAMPLE CLAMP LAB/MAXx WITH WOLFRAM CHR.  
MASSESTIFT NIEDERHALTER MIT WOLFRAM- SPITZE LAB/MAXx

**75060005**

---



SAMPLE CLAMP LAB/MAXx  
NIEDERHALTER LAB/MAXx

**75260111E**

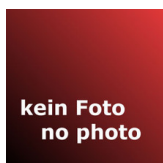
---



GLOVE LATEX SIZE 7,5 (M)  
HANDSCHUH LATEX GRÖSSE 7,5 (M)

**80000325**

---



SHORT OPERATING INSTRUCTION LAV M11  
KURZBEDIENUNSANLEITUNG SPECTROLAB M11

**80011308**

---



WRENCH ALLEN AF2/ LONG HANDLE  
SCHLÜSSEL INNENSECHSKANT SW2/ LANGER GRIFF

**80009138**

---



FILE BRUSH L=115MM/ W=40MM/ 56720-010  
BÜRSTE FEILEN L=115MM/ B=40MM/ 56720-010

**80009007**

---

## SPECTROLAB · LAVM11



SPECTRO METAL DATABASE COMBINATION/ FERROUS AND NON FERROUS  
SPECTRO METALL DATENBANK KOMBINATION/ EISEN- UND NICHEISENMETALLE

**80111504**



ECCENTRIC RING 25MM/AL INCL. SEAL KF25/AL NEOPREN  
ZENTRIERRING 25MM/AL INKL. DICHTUNG KF25/AL NEOPREN

**44102003**

### Accessories

Photo  
Foto

Description  
Bezeichnung



COOLING BLOCK D40\*20  
KÜHLBLOCK D40\*20

**46302085**



COVER FOR SLEW ADAPTER 12/ACRYL  
ABDECKUNG KLEINTEILADAPTER 12/ACRYLGLAS

**47250013**



PARTS SET CORRUGATED HOSE FOR ARGON CONNECTION/ L=3M  
TEILESATZ WELLSCHLAUCH ARGONANSCHLUSS/ L=3M

**71000819**



COPPER TUBE 6\*1MM L=3M WITH FITTINGS  
ROHR KUPFER 6\*1MM L=3M MIT VERSCHRAUBUNGEN

**75060123**

## SPECTROLAB · LAVM11

---



ADAPTER WIRE/ 0.8-10MM/ LAB  
ADAPTER DRAHT/ 0,8-10MM/ LAB

**75060126**

---



ADAPTER SMALL PARTS FOR LAB-F/L/M  
KLEINTEILEADAPTER LAB-F/L/M

**75060121**

---



POWER CABLE/ 250VAC/ 10/16A/ L=2.0M/ CEE7/7 TO C13/ BLACK/ GERMAN  
SCHUKO

NETZKABEL/ 250VAC/ 10/16A/ L=2,0M/ CEE 7/7 AUF C13/ SCHWARZ/ SCHUKO

**75110006**

---



POWER CABLE/ 125VAC/ 10A/ L=2.0M/ NEMA 5-15 TO C13/ BLACK/ US-  
STANDARD

NETZKABEL/ 125VAC/ 10A/ L=2,0M/ NEMA 5-15 AUF C13/ SCHWARZ/ US-NORM

**75110004**

---



ADJUSTMENT TOOL SPECTROLAB ADJUSTABLE STOP ADAPTER SMALL PARTS  
JUSTIERLEHRE SPECTROLAB JUSTIERANSCHLAG KLEINTEILEADAPTER

**75160126**

---



UPGRADE KIT EXHAUST SPARK STAND/ LAB  
AUFRÜSTSATZ ABSAUGUNG FUNKENSTAND/ LAB

**75260121**

---

## SPECTROLAB · LAVM11

---



ADAPTER BASIC KIT

ADAPTER BASISKIT

**75260125**

---

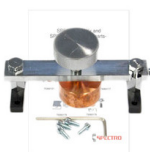


WIRE ADAPTER 3/ FOR WIRES D=0.8-10.0MM/ INCL. MANUAL

ADAPTER DRAHT 3/ FÜR DRÄHTE D=0,8-10,0MM/ INKL. BEDIENUNGSANLEITUNG

**75360125**

---



SHEET ADAPTER/ FOR SHEET THICKNESS 0.1-1.0MM/ INCL. MANUAL

ADAPTER BLECH/ FÜR BLECHSTÄRKE 0,1-1,0MM/ INKL. BEDIENUNGSANLEITUNG

**75360126**

---



WIRE ADAPTER 1/ FOR WIRES D=0.8-3.0MM/ INCL. MANUAL

ADAPTER DRAHT 1/ FÜR DRÄHTE D=0,8-3,0MM/ INKL. BEDIENUNGSANLEITUNG

**75360124**

---



PC STAND WITH TRACKBALL

PC-TISCH MIT TRACKBALL

**77040128**

---



PC STAND WITHOUT TRACKBALL

PC-TISCH OHNE TRACKBALL

**77040127**

---



COMPUTER DESK MOBILE/ HEIGHT ADJUSTABLE

PC-ARBEITSPLATZ MOBIL/ HÖHENVERSTELLBAR

**77040199**

---

## SPECTROLAB · LAVM11

---



DISC GRINDING MACHINE MANUALLY/ 230VAC/ 50/60HZ/ 1KVA/ VELCRO-FASTENING DISCS/ D=250MM

TELLERSCHLEIFMASCHINE MANUELL/ 230VAC/ 50/60HZ/ 1KVA/ KLETTSCHLEIBEN/ D=250MM

**77060088**

---



TUBE TITAN/ FOR SIRCAL ARGON PURIFYING SYSTEM MP-2000

PATRONE TITAN/ FÜR SIRCAL ARGONREINIGUNGSSYSTEM MP-2000

**78999094**

---

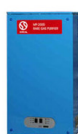


TUBE COPPER-OXID/ FOR SIRCAL ARGON PURIFYING SYSTEM MP-2000

PATRONE KUPFER-OXID/ FÜR SIRCAL ARGONREINIGUNGSSYSTEM MP-2000

**78999095**

---



ARGON CLEANING SYSTEM 230V/50-60HZ/ MP-2000/ INCL. GAS SIDE ENTRY KIT AND 2X 78999096 TUBE MOLECULAR SIEVE/ W/O 78999094 CARTRIDGE TITAN AND 78999095 CARTRIDGE COPPER-OXID

ARGONREINIGUNGSSYSTEM 230V/50-60HZ/ MP-2000/ INKL. GAS SIDE ENTRY KIT UND 2X 78999096 LEITUNG MOLEKULARSIEB/ OHNE 78999094 PATRONE TITAN UND 78999095 PATRONE KUPFER-OXID

**78999120**

---



TC LINK PIPE SIRCAL

ROHR VERBINDUNG TC SIRCAL

**78999126**

---



TUBE MOLECULAR SIEVE FOR SIRCAL ARGON PURIFYING SYSTEM MP2000

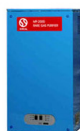
LEITUNG MOLEKULARSIEB/TROCKNER FÜR SIRCAL ARGONREINIGUNGSSYSTEM MP2000

**78999096**

---

## SPECTROLAB · LAVM11

---







ARGON CLEANING SYSTEM 115V/50-60HZ/ MP-2000/ INCL. GAS SIDE ENTRY KIT AND 2X 78999096 TUBE MOLECULAR SIEVE/ W/O 78999094 CARTRIDGE TITAN AND 78999095 CARTRIDGE COPPER-OXID

ARGONREINIGUNGSSYSTEM 115V/50-60HZ/ MP-2000/ INKL. GAS SIDE ENTRY KIT UND 2X 78999096 LEITUNG MOLEKULARSIEB/ OHNE 78999094 PATRONE TITAN UND 78999095 PATRONE KUPFER-OXID

**78999121**

---

### Housing

Photo Foto	Description Bezeichnung
	<p>MINILATCH HANDLE DRAWER SCHNAPPER SCHUBLADE GEHÄUSE</p> <p><b>44904073</b></p>
	<p>SET OF SLIDE RAILS DRAWER LAVM1X SATZ FÜHRUNGSSCHIENEN SCHUBLADE LAVM1X</p> <p><b>45000319</b></p>
	<p>HINGE DOOR LAVM1X SCHARNIER TÜR LAVM1X</p> <p><b>45000320</b></p>
	<p>COVER FRONT/BACK BOTTOM HOUSING LAVM1X LEISTE VORNE/HINTEN UNTEN GEHÄUSE LAVM1X</p> <p><b>50010101</b></p>

---



## SPECTROLAB · LAVM11

---



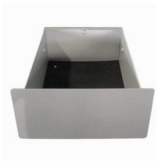
COVER BACKSIDE HOUSING LAVM11  
ABDECKUNG RÜCKWAND GEHÄUSE LAVM11 RAL7015  
**50010125**

---



COVER FRONT BOTTOM HOUSING LAVM11  
ADDECKUNG VORNE UNTEN GEHÄUSE LAVM11 RAL7015  
**50010124**

---



DRAWER HOUSING LAVM11  
SCHUBLADE GEHÄUSE LAVM11 RAL7040  
**50010132**

---



SIDE COVER LEFT TOP HOUSING LAVM1X  
ADDECKUNG SEITE LINKS OBEN GEHÄUSE LAVM1X  
**50010105**

---



COVER LEFT/RIGHT BOTTOM HOUSING LAVM1X  
LEISTE LINKS/RECHTS UNTEN GEHÄUSE LAVM1X  
**50010102**

---



SIDE COVER LEFT BOTTOM HOUSING LAVM11  
ADDECKUNG SEITE LINKS UNTEN GEHÄUSE LAVM11 RAL7015  
**50010120**

---



SIDE COVER RIGHT TOP HOUSING LAVM1X  
ADDECKUNG SEITE RECHTS OBEN GEHÄUSE LAVM1X  
**50010107**

---

## SPECTROLAB · LAVM11

---



SIDE COVER RIGHT BOTTOM HOUSING LAVM11  
ADDECKUNG SEITE RECHTS UNTEN GEHÄUSE LAVM11 RAL7015

**50010121**

---



COVER FRONT TOP HOUSING LAVM1X  
ADDECKUNG VORNE OBEN GEHÄUSE LAVM1X

**50010118**

---



MIDDLE COVER RIGHT HOUSING LAVM11  
ADDECKUNG MITTE RECHTS GEHÄUSE LAVM11 RAL 7040

**50010123**

---



ROOF PLATE HOUSING LAVM1X  
DECKPLATTE GEHÄUSE LAVM1X

**50010103**

---



MIDDLE COVER LEFT HOUSING LAVM11  
ADDECKUNG MITTE LINKS GEHÄUSE LAVM11 RAL7040

**50010122**

---



FRAME FITTING CLEARING AIR FILTER LAVM1X  
RAHMEN MONTAGEAUSGLEICH LUFTFILTER LAVM1X

**50440101**

---



DOOR HOUSING LAVM11  
TÜR GEHÄUSE LAVM11 RAL7040

**50010126**

---

## SPECTROLAB · LAVM11

---



COVER AIR FILTER HOUSING LAVM11  
ADDECKUNG LUFTFILTER GEHÄUSE LAVM11 RAL7015  
**50010131**

---



COVER SPARK STAND LAVM11  
ABDECKUNG FUNKENSTAND LAVM11 RAL7040  
**50010128**

---



COVER LEFT REAR HOUSING LAVM11  
ADDECKUNG HINTEN LINKS GEHÄUSE LAVM11 RAL7015  
**50010129**

---



COVER FRONT LAVM11  
ABDECKUNG FRONT GEHÄUSE LAVM11 RAL7040  
**50010127**

---



COVER RIGHT REAR HOUSING LAVM11  
ADDECKUNG HINTEN RECHTS GEHÄUSE LAVM11 RAL7015  
**50010130**

---



UPGRADE KIT LAB M11 AIR FILTER MOUNT DARK GREY  
UMRÜSTSATZ LAB M11 LUFTEINTRITTFILTER DUNKELGRAU  
**75270170**

---

### Remainder-on-stock

---

Photo Foto	Description Bezeichnung
---------------	----------------------------

---

## SPECTROLAB · LAVM11

---



MOUNTING TOOL FOR WINDOW SUPPORT D14\*60

EINSCHRAUBWERKZEUG FENSTERHALTER AD14\*60

**46311160**

---