

SPECTROGREEN · FMT46 (2020)

Measuring chamber

Photo
Foto

Description
Bezeichnung



FORK CLAMP WITH SET SCREW/ KS19/ STAINLESS STEEL
KLEMME GABEL MIT FESTSTELLSCHRAUBE/ KS19/ EDELSTAHL

44503013



LOAD COIL SILVER/ MADE OF CAST/ SPARE PART/ GREEN FMX46
ARBEITSSPULE SILBER/ AUS GUSS/ ERSATZTEIL/ GREEN FMX46

46905008E



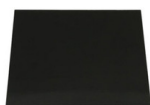
GASKET ADAPTER TUBE TORCH/ VITON
DICHTUNG ADAPTERROHR TORCH/ VITON

47510268E



SEAL ADAPTER TUBE TORCH
DICHTUNG ADAPTERROHR TORCH

47510263



WINDOW 110X90MM/ UV-PROTECTING GLASS/ PROTECTION LEVEL 5/ WITH
SHATTER PROTECTION FOIL

FENSTER 110X90MM/ UV-SCHUTZGLAS/ SCHUTZSTUFE 5/ MIT
SPLITTERSCHUTZFOLIE

64063005



ADJUSTING TOOL COIL GENERATOR GENESIS
SPULENAUSRICHTLEHRE GENERATOR

75260116

SPECTROGREEN · FMT46 (2020)



BRACKET TORCH ROUND/ COMPLETE/ WITH BAJONETT
HALTER TORCH RUND/ KOMPLETT/ MIT BAJONETT

75460590E



PARTS KIT LOAD COIL COAXIAL
TEILESATZ ARBEITSSPULE KOAX

75460557

Sample introduction systems

Photo
Foto

Description
Bezeichnung



MUFFLER/ FLAT/ M5/ SINTERED BRONZE
SCHALLDÄMPFER/ FLACH/ M5/ SINTERBRONZE

44302513



WASHER PTFE/ OD=22.4MM/ ID=19.5MM/ T=0.2MM/ [10 PCS.]
SCHEIBE PTFE/ AD=22,4MM/ ID=19,5MM/ T=0,2MM/ [10 STK.]

47311011



GLASS TUBE LIGHTCHANNEL ID11/8/ OD16/ L63
GLASROHR LICHTKANAL ID11/8/ AD16/ L63

48105077



LENSE PLANKONVEX D22.4/ R50.5
LINSE PLANKONVEX D22,4/ R50,5

48301033

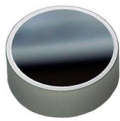
SPECTROGREEN · FMT46 (2020)



WINDOW MGF2 VUV/ D=22.3MM/ T=2.0MM

FENSTER MGF2 VUV/ D=22,3MM/ T=2,0MM

48303012



MIRROR CONCAVE R = -300/ ARCOS+BLUE

SPIEGEL KONKAV R = -300/ ARCOS+BLUE

48309018



PARTS SET BOOSTER

TEILESATZ BOOSTER

71000828



LIGHT TUBE SOP VERS.2/ CORROSION RESISTANT/ FHS+FMS

LICHTROHR SOP VERS.2/ KORROSIONSBESTÄNDIG/ FHS+FMS

75080570



MIRROR REFLECTOR (BOOSTER) COUPLING/ / FMX46/ FED37

SPIEGEL REFLEKTOR (BOOSTER) EINKOPPLUNG / FMX46/ FED37

75080578



FLAP ACTUATOR FMX

KLAPPEN VERSTELLUNG FMX

75180131



PRISMA ACTUATOR INCL. PRISMA FMX

PRISMA-VERSTELLUNG INKL. PRISMA FMX

75180130

SPECTROGREEN · FMT46 (2020)



SPARE PARTS KIT SHUTTER/ ARCOS 2 + ARCOS 3 + GREEN

ERSATZTEILPAKET SHUTTER/ ARCOS 2 + ARCOS 3 + GREEN

75270586



SAMPLE INTRODUCTION SYSTEM HF RESISTANT - EOP TI/ MIRAMIST/ CYCLONIC
HF RESISTANT/ DEMOUNTABLE TORCH/ 2,5MM AL2O3

PROBENEINTRAGSSYSTEM HF-FEST - EOP TI/ MIRAMIST/ ZYKLONISCH HF-FEST/
ZERLEGBARE TORCH/ 2,5MM AL2O3

75360556



SAMPLE INTRODUCTION SYSTEM HIGH SALTS >2% - EOP TI/ CROSSFLOW/
SCOTT/ FIXED TORCH/ 3,0MM/ ADDITIONAL GAS/ AR HUMIDIFIER

PROBENEINTRAGSSYSTEM HOHE SALZE >2% - EOP TI/ CROSSFLOW/ SCOTT/
FESTE TORCH/ 3,0MM/ ZUSATZGAS/ AR-BEFEUCHTER

75560514



SAMPLE INTRODUCTION SYSTEM HIGH SALTS <2% - EOP TI/ CROSSFLOW/
SCOTT/ FIXED TORCH/ 3.0MM/ ADDITIONAL GAS

PROBENEINTRAGSSYSTEM HOHE SALZE <2% - EOP TI/ CROSSFLOW/ SCOTT/
FESTE TORCH/ 3,0MM/ ZUSATZGAS/

75560513



SAMPLE INTRODUCTION SYSTEM STANDARD - EOP TI/ CROSSFLOW/ SCOTT/
FIXED TORCH/ 2.0MM

PROBENEINTRAGSSYSTEM STANDARD - EOP TI/ CROSSFLOW/ SCOTT/ FIXED
TORCH/ 2,0MM

75560508



SAMPLE INTRODUCTION SYSTEM CONCENTRIC - EOP TI/ SEASPRAY/ CYCLONIC/
FIXED TORCH/ 2.0MM

PROBENEINTRAGSSYSTEM KONZENTRISCH - EOP TI/ SEASPRAY/ ZYKLONISCH/
FESTE TORCH/ 2,0MM

75560509

SPECTROGREEN · FMT46 (2020)



SAMPLE INTRODUCTION SYSTEM OILS WITH UNDISSOLVED SOLIDS - EOP TI/
NOORDERMEER/ CYCLONIC/ FIXED TORCH/ 1.8MM

PROBENEINTRAGSSYSTEM PARTIKEL IN ÖL - EOP TI/ NOORDERMEER/
ZYKLONISCH/ FESTE TORCH/ 1,8MM

75560511



SAMPLE INTRODUCTION SYSTEM VOLATILE ORGANICS - EOP TI/ ISOMIST/
TWISTER/ JACKETED CYCLONIC/ DEMOUNTABLE TORCH/ 1.2MM/ FMT46

PROBENEINTRAGSSYSTEM FLÜCHTIGE ORGANIK - EOP TI/ ISOMIST/ TWISTER/
UMMANTELT ZYKLONISCH/ ZERLEGBARE TORCH/ 1,2MM/ FMT46

75560554



SAMPLE INTRODUCTION SYSTEM STANDARD OIL - EOP TI/ CROSSFLOW/ SCOTT/
FESTE FACKEL/ 1,8MM

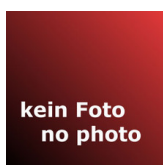
PROBENEINTRAGSSYSTEM STANDARD ÖL - EOP TI/ CROSSFLOW/ SCOTT/ FESTE
TORCH/ 1,8MM

75560510

Glass ware, torches, nebulizer

Photo
Foto

Description
Bezeichnung



SPRAY CHAMBER CYCLONIC/ JACKETED/ KS19

ZESTÄUBERKAMMER ZYKLONISCH/ UMMANTELT/ KS19

48105094



TORCH GREEN TWIN ID3.0

TORCH GREEN TWIN ID3,0

48205076

SPECTROGREEN · FMT46 (2020)



GLASS TUBE TORCH WITH MARKING
GLASKÖRPER TORCH MIT MARKIERUNG

48205054



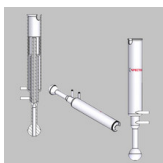
INJECTION TUBE ID=2.5MM/ L=108MM/ AL2O3
INJEKTORROHR ID=2,5MM/ L=108MM/ AL2O3

48807027



INJECTION TUBE ID=1.8MM/ L=108MM/ QUARTZ GLASS
INJEKTORROHR ID=1,8MM/ L=108MM/ QUARZGLAS

48807023



TORCH GREEN TWIN ID2.5
TORCH GREEN TWIN ID2,5

48205075



ADAPTER NEBULIZER CHAMBER 90°
ADAPTER ZERSTÄUBERKAMMER 90°

48205046



INJECTION TUBE ID=2.0MM/ L=108MM/ QUARTZ GLASS
INJEKTORROHR ID=2,0MM/ L=108MM/ QUARZGLAS

48807024



SPRAY CHAMBER SCOTT/ OD36/ QUARTZ/ HEAVY DUTY
ZERSTÄUBERKAMMER SCOTT/ AD36/ QUARZ/ HOHE BEANSPRUCHUNG

48105088

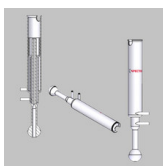
SPECTROGREEN · FMT46 (2020)



INJECTION TUBE ID=1.2MM/ L=108MM/ QUARTZ GLASS

INJEKTORROHR ID=1,2MM/ L=108MM/ QUARZGLAS

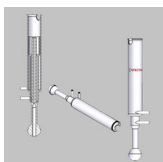
48807022



TORCH GREEN TWIN ID1.8

TORCH GREEN TWIN ID1,8

48205073



TORCH GREEN TWIN ID2.0

TORCH GREEN TWIN ID2,0

48205074



PLASTIC PARTS KIT TORCH ASSEMBLED

KST-TEILESATZ TORCH TWIN INTERFACE MONTIERT

75360573



MOUNTING BRACKET SPRAY CHAMBER

HALTEWINKEL ZERSTÄUBERKAMMER

75560502



ADAPTER GLASS PART FIXED TORCH

ADAPTER GLASTEIL FESTE TORCH

75460592



SPHERICAL GROUND GLASS JOINT SLEEVE/ KS19/ PTFE

KUGELSCHLIFF-MANSCHETTEN/ KS19/ PTFE

47310009

SPECTROGREEN · FMT46 (2020)



ADAPTER SPRAY CHAMBER 90°/ 2X KS19/9
 ADAPTER ZERSTÄUBERKAMMER 90°/ 2X KS19/9

48205065



INJECTION TUBE ID=1.8MM/ L=108MM/ AL2O3
 INJEKTORROHR ID=1,8MM/ L=108MM/ AL2O3

48807026

Optics, light path

Photo
Foto

Description
Bezeichnung



MUFFLER/ FLAT/ M5/ SINTERED BRONZE
 SCHALLDÄMPFER/ FLACH/ M5/ SINTERBRONZE

44302513



CLAMP SCREW LENS
 KLEMMSCHRAUBE LINSE

46112136



DIRT TRAP TI
 SCHMUTZFALLE TI

46112230



SAMPLER/ AIR-COOLED OPI
 SAMPLER/ LUFTGEKÜHLTES OPI

46901081

SPECTROGREEN · FMT46 (2020)



SAMPLER - HEAVY DUTY - AIR COOLED OPI
SAMPLER - HOCHBELASTBAR - LUFTGEKÜHLTES OPI

46901078



RING NUT/ AIR-COOLED OPI
GEWINDERING/ LUFTGEKÜHLTES OPI

46901080



WASHER PTFE/ OD=22.4MM/ ID=19.5MM/ T=0.2MM/ [10 PCS.]
SCHEIBE PTFE/ AD=22,4MM/ ID=19,5MM/ T=0,2MM/ [10 STK.]

47311011



GLASS TUBE LIGHTCHANNEL ID11/8/ OD16/ L63
GLASROHR LICHTKANAL ID11/8/ AD16/ L63

48105077



LENSE PLANKONVEX D22.4/ R50.5
LINSE PLANKONVEX D22,4/ R50,5

48301033



WINDOW QUARTZ GLASS/ D=13MM/ T1.75MM
FENSTER QUARZGLAS/ D=13MM/ T=1,75MM

48303014



LIGHT TUBE GLASS TI
LICHTROHR GLAS TI

48105086

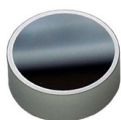
SPECTROGREEN · FMT46 (2020)



WINDOW MGF2 VUV/ D=22.3MM/ T=2.0MM

FENSTER MGF2 VUV/ D=22,3MM/ T=2,0MM

48303012



MIRROR CONCAVE R = -300/ ARCOS+BLUE

SPIEGEL KONKAV R = -300/ ARCOS+BLUE

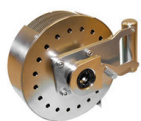
48309018



PARTS SET BOOSTER

TEILESATZ BOOSTER

71000828



OPT. PLASMA INTERFACE VERS.2/ CORROSION RESISTANT

OPT. PLASMA INTERFACE VERS.2/ KORROSIONSBESTÄNDIG

75080564



LIGHT TUBE SOP VERS.2/ CORROSION RESISTANT/ FHS+FMS

LICHTROHR SOP VERS.2/ KORROSIONSBESTÄNDIG/ FHS+FMS

75080570



MIRROR REFLECTOR (BOOSTER) COUPLING/ / FMX46/ FED37

SPIEGEL REFLEKTOR (BOOSTER) EINKOPPLUNG / FMX46/ FED37

75080578



FLAP ACTUATOR FMX

KLAPPEN VERSTELLUNG FMX

75180131

SPECTROGREEN · FMT46 (2020)



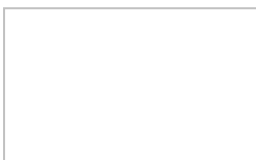
PRISMA ACTUATOR INCL. PRISMA FMX
PRISMA-VERSTELLUNG INKL. PRISMA FMX

75180130



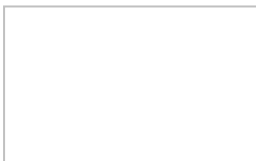
SPARE PARTS KIT SHUTTER/ ARCOS 2 + ARCOS 3 + GREEN
ERSATZTEILPAKET SHUTTER/ ARCOS 2 + ARCOS 3 + GREEN

75270586



SHUTTER DARK CURRENT/ FMX46
SHUTTER DUNKELSTROM/ FMT46



75360601



PARTS SET SHUTTER FMS46
TS SHUTTER FMS46

71000891

Gas system, tubings, fittings

Photo Foto	Description Bezeichnung
	INSERTION SLEEVE FOR SYNT. HOSE D=2/4 [10 PCS.] HÜLSE EINSTECK D=2/4/ FÜR KUNSTSTOFFSCHLAUCH/ [10 STK.]
	44302258
	BACK PRESURRE VALVE/ PUSH IN/ 6MM TUBE/ DEGREASED VERSCHRAUBUNG RÜCKSCHLAGVENTIL/ PUSH IN/ SCHLAUCH 6MM/ FETTFREI
	44302516

SPECTROGREEN · FMT46 (2020)



RING GASKET FOR PIPE OR TUBE/ OD=6MM/ [10 PCS.]
DICHTRING FÜR SCHLAUCH ODER ROHR/ AD=6MM/ [10 STK.]

44302014



NUT UNION/ 6MM/ BRASS BRIGHT/ [10 PCS.]
MUTTER ÜBERWURF/ 6MM/ MESSING BLANK/ [10 STK.]

44302049



REDUCING SET 6MM/4MM/ FOR PTFE HOSE
REDUZIERSETZ 6MM/4MM/ FÜR PTFE-SCHLAUCH

44302096



LOCKING RING FRONT/ 6MM/ BRASS BRIGHT/ [10 PCS.]
KLEMMRING VORN/ 6MM/ MESSING BLANK/ [10 STK.]

44302050



PLUGIN SLEEVE/ FOR PLASTIC HOSE/ D=6MM/8MM/ [10 PCS.]
HÜLSE EINSTECK/ FÜR KUNSTSTOFFSCHLAUCH/ D=6MM/8MM/ [10 STK.]

44302021



QUICK-SNAP COUPLING, D6, CONNECTION 6MM
SCHNELLKUPPLUNG KÖRPER D6

44303010



UNION JOINT HOSE 1/8" -6MM
VERSCHRAUBUNG REDUZIER SCHLAUCH 1/8"-6MM

44302259

SPECTROGREEN · FMT46 (2020)



RESTRICTION VALVE WITH SILENCER M5

SCHALLDÄMPFER MIT DROSSEL M5

44702071



THREADED JOINT SCREW-IN STRAIGHT M5/ 4MM/ PUSH-IN

VERSCHRAUBUNG EINSCHRAUB GERADE M5/ 4MM/ PUSH-IN

44302474



BULKHEAD FITTING FOR HOSE 4X6MM/ V2A

VERSCHRAUBUNG SCHOTT FÜR SCHLAUCH 4X6/ V2A

44302517



FAST COUPLING BODY/ SCHOTT/ CONNECTION 6MM

SCHNELLKUPPLUNG KÖRPER/ SCHOTT/ ANSCHLUSS 6MM

44303018



QUICK-SNAP COUPLING PLUG/ CONNECTION 1/8"

SCHNELLKUPPLUNG STECKER/ ANSCHLUSS 1/8"

44303015



FITTING Y/ 8MM TUBE CONNECTORS/ BRASS

VERSCHRAUBUNG Y/ 8MM SCHLAUCHANSCHLUSS/ MESSING

44302518



FITTING REDUCER SET 6/8MM

REDUZIERSATZ VERSCHRAUBUNG 6/8MM

44303026

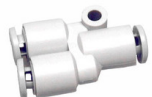
SPECTROGREEN · FMT46 (2020)



DUMMY PLUG D=6MM
BLINDSTOPFEN D=6MM
44702330



CONNECTION STRAIGHT/ KQH04-06/ BLACK
VERSCHRAUBUNG GERADE/ KQH04-06/ SCHWARZ
44702317



PLUG-IN Y/ AD4
Y STECKABZWEIG/ AD4
44702072



CONNECTOR HOSE Y/ AD6MM/ PUSH IN/ PLASTIC
VERBINDER SCHLAUCH Y/ AD6MM/ PUSH IN/ KUNSTSTOFF
44702068



BULKHEAD ELBOW/ PUSH IN/ FOR 6MM TUBES
WINKELSCHOTTVERSCHRAUBUNG/ PUSH IN/ FÜR 6MM SCHLAUCH
44702335



TUBE TYGON(PVC)/ AD2.79/ ID0.89/ [10 M.]
SCHLAUCH TYGON(PVC)/ AD2,79/ ID=0,89/ [10 M.]
47201022



TUBE PTFE/ OD=6MM/ ID=4MM/ WHITE / [5 M.]
SCHLAUCH PTFE/ AD=6MM/ ID=4MM/ WEISS / [5 M.]
47301021

SPECTROGREEN · FMT46 (2020)



TUBE VITON/ OD=3.53MM/ ID=1.85MM/ [3 M.]
SCHLAUCH VITON/ AD=3,53MM/ ID=1,85MM/ [3 M.]

47501011



SOLENOID VALVE 5/2/ 24VDC/ INCL.THREADED JOINT
MAGNETVENTIL 5/2 WEGE/ 24VDC/ INKL. VERSCHRAUBUNG

57005218E



BRACKET F2 FOR SX3000
BEFESTIGUNGSELEMENT F2

64064044



AIR FILTER/ FOR TUBE OD6/ WITH HOLDER
LEITUNGSFILTER LUFT/ FÜR D6/ MIT HALTER

64000339



PRESSURE REGULATOR/ 0.05-0.35MPA/ WITH DISPLAY/ CONNECTIONS FOR 6MM
PUSH IN/ MAX.INLET PRESSURE 1MPA

DRUCKREGLER 0,05-0,35MPA/ MIT ANZEIGE/ ANSCHLUSS 6MM PUSH IN/
MAX.EINGANGSDRUCK 1MPA

73003326



SET SOLENOID VALVE 5/2/ 24VDC/ INCL. RESTRICTION VALVE WITH SILENCER
M5

SET MAGNETVENTIL 5/2 WEGE/ 24VDC/ INKL. SCHALLDÄMPFER MIT DROSSEL M5

71000843

SPECTROGREEN · FMT46 (2020)



CYLINDER/ D=10/ HUB=15

ZYLINDER/ D=10/ HUB=15

73008060



TUBE PTFE/ 8X1.5MM/ L=5M/ ONE-SIDED SCREW CONNECTION

SCHLAUCH PTFE/ 8X1,5MM/ L=5M/ EINSEITIGE VERSCHRAUBUNG

75060956



FITTING WITH 0.6MM NOZZLE

VERSCHRAUBUNG MIT 0,6MM DÜSE

75080580



FITTING WITH 0.2MM NOZZLE

VERSCHRAUBUNG MIT 0,2MM DÜSE

75080579



ARGON CONTROL UNIT/ 4-CHANNELS/ 8 BAR/ WITH ADD. GAS/ NEB: 0.1-1.5NL/MIN.

REGELEINHEIT GAS DMB/ 4-KANAL/ 8 BAR/ MIT ZUSATZGAS/ NEB: 0,1-1,5NL/MIN.

75460549



ARGON CONTROL UNIT/ 4-CHANNELS/ 8 BAR/ NEB: 0,1-1,5NL/MIN.

REGELEINHEIT GAS DMB/ 4-KANAL/ 8 BAR/ NEB: 0,1-1,5NL/MIN.

75460548

SPECTROGREEN · FMT46 (2020)



PUMP DIAPHRAGM 24VDC/ 0,65A/ PMAX 2,4 BAR/ TYPE PM23089-86

PUMPE MEMBRAN 24VDC/ 0,65A/ PMAX 2,4 BAR/ TYP PM23089-86

77060506



PLUGIN SLEEVE/ FOR PLASTIC HOSE/ D=4MM/6MM/ [10 PCS.]

HÜLSE EINSTECK/ FÜR KUNSTSTOFFSCHLAUCH/ D=4MM/6MM/ [10 STK.]

44302020



TUBE/ PTFE/ OD3/ ID2/ NATURAL/ [12 M.]

SCHLAUCH/ PTFE/ AD3/ ID2/ NATUR/ [12 M.]

47301023



TUBE PTFE/ OD1.2/ ID0.6/ NATURAL/ [10M]

SCHLAUCH PTFE/ AD1,2/ ID0,6/ NATUR/ [10 M.]

47301022



LOCKING RING BACK/ 6MM/ BRASS BRIGHT/ [10 PCS.]

KLEMMRING HINTEN/ 6MM/ MESSING BLANK/ [10 STK.]

44302051



NUT UNION/ D=6MM/ [10 PCS.]

MUTTER ÜBERWURF/ D=6MM/ [10 STK.]

44302023

SPECTROGREEN · FMT46 (2020)



JOINT, THREADED, STRAIGHT, SCREW-IN THREAD:R1/4 TUBE OR HOSE:OD=8MM / [5 PCE]

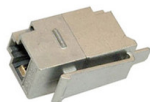
VERSCHRAUBUNG GERADE EINSCHR. R1/4 FÜR SCHLAUCH ODER ROHR:AD=8 /[5 STÜCK]

44302038E

Electr. Components

Photo Foto	Description Bezeichnung
	RETAINER FOR RELAY SOCKET RT78625/ PLASTIC/ BLACK/ 15.7MM+25.5MM HALTEBÜGEL FÜR RELAISFASSUNG RT78625/ KUNSTSTOFF/ SCHWARZ/ 15,7MM+25,5MM 64004104
	SOCKET PLUG IN 230V/ 12A/ 2-POLE/ FOR PRINT RELAY/ FOR DIN-RAIL WITH SCREW CONNECTION FASSUNG STECK 230V/ 12A/ 2POL/ FÜR PRINT RELAIS/ FÜR DIN-SCHIENE MIT SCHRAUBANSCHLUSS 64004102
	DIODE RECOVERY PLUGGABLE DIODE FREILAUF IM GEHÄUSE 64004103
	RELAIS SOLID STATE 275VAC/ 3A/ ZERO-CROSSING/ 24VDC RELAIS SOLID STATE 275VAC/ 3A/ NULLDURCHGANG/ 24VDC 57002085

SPECTROGREEN · FMT46 (2020)



ADAPTER FOR FRONT PANEL/ SNAP-IN/ SOCKET-SOCKET 1:1/ SHIELDED/ 8-POLE
 EINBAUADAPTER FÜR FRONTPLATTEN/ SNAP-IN/ BUCHSE-BUCHSE 1:1/
 GESCHIRMT/ 8-POLIG

66020204



FUSE AUTOMATIC 25A/ CHARACTERISTICS B/ 1-POLE/ 230-400VAC
 SICHERUNG AUTOMAT 25A/ CHARAKTERISTIK B/ 1-POLIG/ 230-400VAC

68005371



BLADE FUSE AUTOMOTIVE 3A/ 32VDC/ 5X20MM/ [10 PCS.]
 SICHERUNG FLACH KFZ 3A/ 32VDC/ 5X20MM/ [10 STK.]

68005080



FUSE AUTOMATIC 6A/ CHARACRERISTICS B/ 1-POLE/ 230-400VAC
 SICHERUNG AUTOMAT 6A/ CHARAKTERISTIK B/ 1-POLIG/ 230-400VAC

68005370

Electr. assemblies, boards

Photo
Foto

Description
Bezeichnung



FILTER LINE/ 250V/ 1X25A
 FILTER NETZ/ 250V/ 1X25A

57004036



HIGH VOLTAGE IGNITION
 HOCHSPANNUNGSZÜNDUNG

75050509

SPECTROGREEN · FMT46 (2020)



HEATER ASSEMBLY/ 230VAC/ 200W/ 24VDC/ INCL.FAN
HEIZUNG/ 230VAC/ 200W/ 24VDC/ INKL.LÜFTER

75040041



GENERATOR 2500WHF/ 230V/ SOLID STATE/ EMV
GENERATOR 2500WHF/ 230V/ SOLID STATE/ EMV

76023134E



LOWPASS FILTER MINI BOX SSG/ TYP LONESTAR
TIEFPASS FILTER MINI BOX SSG/ TYP LONESTAR

76023131E



X-CHANGE GENERATOR HF/ 2,5KW/ 230V/ SOLID STATE/ EMV
AUSTAUSCH GENERATOR HF/ 2,5KW/ 230V/ SOLID STATE/ EMV

76023134X



POWER SUPPLY/ SP-320-24/ 88-264VAC/ 24VDC/ 13A
NETZTEIL/ SP-320-24/ 88-264VAC/ 24VDC/ 13A

77020081



MEASURE/CONTROL BOARD WITH DMB/ WITH SYSTEMSOFTWARE ARC/SPARK
MESS-/REGELKARTE MIT DMB/ INCL. SYSTEMSOFTWARE ARC/SPARK

EK0014B2



OES FRONTEND ILX511/ 1MB/ V/IN=6V/ 300MA/ 1024KB FLASH ROM/ 192KB RAM
OES FRONTEND ILX511/ 1MB/ V/IN=6V/ 300MA/ 1024KB FLASH-ROM/ 192KB RAM

EK1407-2

SPECTROGREEN · FMT46 (2020)



ADAPTER DMB RJ45

ADAPTER DMB RJ45

EK1411--



HOST CONTROLLER

HOST CONTROLLER

EK1502-1S

Switches, cables, lamps

Photo
Foto

Description
Bezeichnung



MAGNET RING/ D10X5/ FOR REED CONTACT

MAGNET RING/ D10X5/ FÜR REEDKONTAKT

64014017



SWITCHING ELEMENT KEY BUTTON/ BR04/ 2 BREAK CONTACTS

SCHALTELEMENT TASTER/ BR04/ 2 ÖFFNER

65011019



FERRITE BUSH OD13/ 25X25X28/ WITH SWING OPEN SYNTHETIC COVER

FERRITHÜLSE ID=13/ 25X25X28/ MIT KUNSTSTOFFGEHÄUSE ZUM AUFKLAPPEN

64000050



FLOAT SWITCH LS3 TYPE4 M12*1,75

SCHALTER SCHWIMMER LS3 TYP4 M12*1,75 MIT MUTTER M12*1,75

65029005

SPECTROGREEN · FMT46 (2020)



SWITCH DISCONNECTOR/ 3 POLE/ 32A/ GREY-BLACK
SCHALTER LASTTRENNER/ 3-POLIG/ 32A/ GRAU-SCHWARZ

65011371



PLUG COAX N/ ELBOW/ MALE-FEMALE
STECKER KOAX N/ WINKEL/ BUCHSE-STECKER

66030042



SWITCH TEMPERATURE BIMETAL/ NC-CONTACT/ 35/50°C +- 3-4°C/ CONNECTION
FLAT PLUG 6.35MM/ 250VAC/10A/ 30VDC/5A

SCHALTER TEMPERATUR BIMETALL/ NC-KONTAKT/ 35/50°C +- 3-4°C/ ANSCHLUSS
FLACHSTECKER 6,35MM/ 250VAC/10A/ 30VDC/5A

65031005



PUSH SWITCH/ SUNK-IN MOUNTING/ BR04/ BLUE/ NOT ILLUMINATED
TASTER DRUCK/ VERSENKTER EINBAU/ BR04/ BLAU/ NICHT BELEUCHTET

65011074



CABLE EARTH/ RING M5/ PLUG/ SPRING CONTACT/ L=170MM
KABEL ERDUNG/ RING M5/ ARRETIERBAR/ FEDERKONTAKT/ L=170MM

75020564



CABLE COAX 1/2" / N CONNECTOR / 3M
KABEL KOAX 1/2" / N STECKER / 4,10M

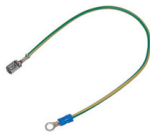
75020569

SPECTROGREEN · FMT46 (2020)



REED SENSOR/ MS-332-3/ WITH PLUG
REED-SENSOR/ MS-332-3/ MIT STECKER

75030529



CABLE EARTH/ RING M5/ PLUG/ SPRING CONTACT/ L=250MM
KABEL ERDUNG/ RING M5/ ARRETIERBAR/ FEDERKONTAKT/ L=250MM

75020566



SWITCH TORCH CHAMBER WITH CABLE FHX22
SCHALTER TORCHRAUM MIT KABEL FHX22

75030530



CABLE USB/ PLUG A - PLUG MICRO B/ 5 PIN/ 0.6M/ GOLD PLATED
KABEL USB/ STECKER A - STECKER MICRO B/ 5-POL./ 0,6M/ VERGOLDET

75120114



CABLE PATCH/ RJ45-RJ45/ CAT5/ L=2.0M/ GREY
KABEL PATCH/ RJ45-RJ45/ KAT.5/ L=2,0M/ GRAU

75120077



PATCH CABEL/ RJ45-RJ45/ CAT.5E/ L=2.0M/ GREEN/ F/UTP OR SF/UTP
PATCHKABEL/ RJ45-RJ45/ CAT.5E/ L=2,0M GRÜN/ F/UTP ODER SF/UTP

75120094






PATCH CABLE/ RJ45-RJ45/ CAT.5E/ L=1.5M/ GREEN/ F/UTP OR SF/UTP
PATCHKABEL/ RJ45-RJ45/ CAT.5E/ L=1,5M/ GRÜN/ F/UTP



75120093

SPECTROGREEN · FMT46 (2020)

Fans, filter mats

Photo Foto	Description Bezeichnung
	<p>FILTER MAT EU4/G4/ 690X515X20MM/ FMX46 FILTERMATTE EU4/G4/ 690X515X20/ FMX46</p> <p>47840047</p>
	<p>FAN RADIAL/ 24VDC/ 40W/ 255M3/H/ WITH HOUSING LÜFTER RADIAL/ 24VDC/ 40W/ 255M3/H/ MIT GEHÄUSE</p> <p>57007348</p>
	<p>FAN RADIAL 24VDC/ 76X76X27MM/ 22M3/H/ 2.9W/ INCL. PLUG LÜFTER RADIAL 24VDC/ 76X76X27/ 22M3/H/ 2,9W/ INCL. STECKER</p> <p>75050036</p>

O-rings

Photo Foto	Description Bezeichnung
	<p>O-RING 4X1/ VITON/ GREEN/ [10 PCS.] O-RINGE 4X1/ VITON/ GRÜN/ [10 STK.]</p> <p>47510076E</p>
	<p>O-RING 58X4/ VITON/ 75 SHORE/ [5 PCS.] O-RING 58X4/ VITON/ 75 SHORE/ [5 STK.]</p> <p>47510303E</p>

SPECTROGREEN · FMT46 (2020)



O-RING 5.5X1.5/ BUNAN/ BLACK
O-RING 5,5X1,5/ BUNAN/ SCHWARZ
47510123



O-RING 16X2.5/ VITON/ [10 PCS.]
O-RING 16X2,5/ VITON/ [10 STK.]
47510240E



O-RING 26X4/ VITON/ 75 SHORE/ [5 PCS.]
O-RING 26X4/ VITON/ 75 SHORE/ [5 STK.]
47510733E



O-RING/ 19X3.5/ VITON/ 75 SHORE [10 PCS.]
O-RING/ 19X3,5/ VITON/ 75 SHORE/ [10 STK.]
47510249E



O-RING 25X2/ VITON/ [10 PCS.]
O-RING 25X2/ VITON/ [10 STK.]
47510137E



O-RING 6.00X2.00/ NBR70/ X-COAT S
O-RING 6,00X2,00/ NBR70/ X-COAT S
47510777



O-RING 20X1/ VITON/ 75 SHORE/ [5 PCS.]
O-RING 20X1/ VITON/ 75 SHORE/ [5 STK.]
47510275E

SPECTROGREEN · FMT46 (2020)



O-RING 31X2/ VITON/ 75 SHORE/ [5 PCS.]

O-RING 31X2/ VITON/ 75 SHORE/ [5 STK.]

47510302E



O-RING 24X2.5/ NBR70/ X-COAT/ BLACK

O-RING 24X2,5/ NBR70/ X-COAT S/ SCHWARZ

47510788E



O-RING 12X3.5/ FKM/ 75 SHORE/ [10 PCS.]

O-RING 12X3,5/ FKM/ 75 SHORE/ [10 STK.]

47510262E



O-RING 34X4/ VITON/ [5 PCS.]

O-RING 34X4/ VITON/ [5 STK.]

47510385E



SPARE PART KIT O-RINGS FHX22

ERSATZTEILPAKET O-RINGE FHX22

75270528



O-RING 13X2/ VITON/ [5 PCS.]

O-RING 13X2/ VITON/ [5 STK.]

47510111



O-RING 6X1.5/ VITON/ [10 PCS.]

O-RING 6X1,5/ VITON/ [10 STK.]

47510050E

SPECTROGREEN · FMT46 (2020)

Peristaltic pumps / tubings

Photo Foto	Description Bezeichnung
	<p>CYLINDER WHEEL HEAD/ FOR 3-CHANNEL PERIST. PUMP TYPE: MP12-SM/3 DMB/ FOR 71000249 (77040508,77040509)</p> <p>ROLLENKNOPF/ FÜR 3-KANAL PERIST. PUMPE TYP: MP12-SM/3 DMB/ FÜR 71000249(77040508,77040509)</p> <p>46103611</p>
	<p>TUBE TYGON (PVC)/ ID=0.89/ L=406MM/ 2 COLOR CODE STOPPER PUMP TUBE ORANGE/ORANGE/ [12 PCS.]</p> <p>SCHLAUCH TYGON (PVC)/ ID=0,89/ L=406MM/ 2FACH FARBCODE STOPPER PUMPENSCHLAUCH ORANGE/ORANGE/ [12 STK.]</p> <p>47101003</p>
	<p>HOSE TYGON/ OD=2.74/ ID=1.02/ 2 STOPPER WHITE-WHITE/ LENGTH=400MM/ [12 PCS.]</p> <p>SCHLAUCH TYGON/ AD=2,74/ ID=1,02/ 2 STOPPER WEISS-WEISS/ LÄNGE=400MM/ [12 STK.]</p> <p>47201051</p>
	<p>TUBE TYGON (PVC)/ ID=1.75/ L=406MM/ 2 COLOR CODE STOPPER PUMP TUBE BLUE-GREEN/ [12 PCS.]</p> <p>SCHLAUCH TYGON (PVC)/ ID=1,75/ L=406MM/ 2FACH FARBCODE STOPPER PUMPENSCHLAUCH BLAU-GRÜN/ [12 STK.]</p> <p>47101005</p>
	<p>HOSE TYGON/ OD=4.89/ ID=3.17/ 2 STOPPER BLACK-WHITE/ LENGTH=400MM/ [12 PCS.]</p> <p>SCHLAUCH TYGON/ AD=4,89/ ID=3,17/ 2 STOPPER SCHWARZ-WEISS/ LÄNGE=400MM/ [12 STK.]</p> <p>47201052</p>

SPECTROGREEN · FMT46 (2020)



HOSE TYGON/ OD=2.48/ ID=0.76/ 2 STOPPER BLACK-BLACK/ LENGTH=400MM/
[12 PCS.]

SCHLAUCH TYGON/ AD=2,48/ ID=0,76/ 2 STOPPER SCHWARZ-SCHWARZ/
LÄNGE=400MM/ [12 STK.]

47201050



VIBRATION ABSORBER/ FOR PERISTALT. PUMP/ B10X15/ M4/ [4 PCS.]

SCHWINGUNGSDÄMPFER/ FÜR PERISTALTISCHE PUMPE/ B10X15/ M4/ [4 STK.]

47550022



COUPLING RUBBER SM VITON PERISTALT. PUMP

KUPPLUNGSGUMMI SM VITON PERISTALT. PUMPE

47550021



PRESS STRAP KIT/ FOR 3-CHANNEL PERIST. PUMP TYPE: MP12-SM/3 DMB/ FOR
71000249 (77040508,77040509)

ANPRESSBÜGEL KIT/ FÜR 3-KANAL PERISTALT. PUMPE TYP: MP12-SM/3 DMB/ FÜR
71000249 (77040508,77040509)

71000248



ADJUSTING LEVER KIT/ FOR 3 CHANNEL PERIST. PUMP TYPE: MP12-SM/3 DMB/
FOR 71000249 (77040508,77040509)

JUSTIERHEBEL KIT/ FÜR 3-KANAL PERIST. PUMPE TYP: MP12-SM/3 DMB/ FÜR
71000249 (77040508,77040509)

71000250



PARTS SET PUMP PERISTALTIC 3-CHANNEL/ 24VDC/ TYP: MP12-SM/3 DMB/
WITHOUT FRONT PANEL/ SPARES FOR 77040508,77040509

TEILESATZ PUMPE PERISTALTIK 3-KANAL/ 24VDC/ TYP: MP12-SM/3 DMB/ OHNE
FRONTPLATTE/ E-TEIL FÜR 77040508/77040509

71000249

SPECTROGREEN · FMT46 (2020)



PARTS SET OF SAFETY COVER PERISTALTIC PUMP/ BUILT IN 2020 OR LATER/ CA. 144X140X70MM

TEILESATZ SICHERHEITSSABDECKUNG PERISTALTISCHE PUMPEN/ AB BAUJAHR 2020/ CA. 144X140X70MM

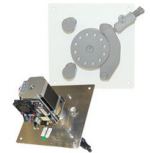
71000796



BOARD SM DMB V2.0 COMPLETE/ SPARE PART FOR PERISTALTIC PUMP DMB

PLATINE SM DMB V2.0 KOMPLETT/ ERSATZTEIL FÜR PERISTALTISCHE PUMPE DMB

71000834



PERISTALTIC PUMP/ 3 CHANNEL/ DMB/ FMX46

PUMPE PERISTALTIK/ 3-KANAL/ DMB/ FMX46

77040521




PERISTALTIC PUMP/ 4 CHANNEL/ DMB/ FMX46

PUMPE PERISTALTIK/ 4-KANAL/ DMB/ FMX46

77040522

Miscellaneous

Photo Foto	Description Bezeichnung
	<p>UNION JOINT BULKHEAD/ FOR HOSE ID2.3/ TYPE=LUER/ FOR PANEL INSTALLATION D6MM/ [5 PCS.]</p> <p>VERSCHRAUBUNG SCHOTT/ FÜR SCHLAUCH ID2,3/ TYP=LUER/ FÜR SCHALTAFELMONTAGE AUSBRUCH D6MM/ [5 STK.]</p> <p>44702040</p>

SPECTROGREEN · FMT46 (2020)



FLAG EXHAUST SENSOR

FAHNE ABLUFTSENSOR

46503262



LABEL BUTTON "PLASMA OFF"

SCHILD TASTER "PLASMA OFF"

64015322



KIT OPTION EXTERNAL PORT FOR "PLASMA ON" SIGNAL

TS OPTION EXTERNER PORT FÜR "PLASMA ON" SIGNAL

71000670



TANK WASTE WATER/ 10L/ WITH SWITCH

BEHÄLTER ABWASSER/ 10L/ MIT SCHALTER

75000502



OPTION OXYGENE

OPTION SAUERSTOFF

73004039



OPTICAL FIBER CONTROL/ 1.5M/ ASSEMBLY/ PLUG BLUE+GREY WITHOUT MARKING

LICHTLEITER STEUER/ 1,5M/ ASSEMBLY/ STECKER BLAU+GRAU OHNE MARKIERUNG

75090021

SPECTROGREEN · FMT46 (2020)



TOOL, SCREWDRIVER FOR LENSE ATTACHMENT ICP EOP
SCHRAUBWERKZEUG LINSENKLEMMUNG ICP EOP

75160521



SCREW CAP/ FOR WIDE-MOUTH TANK/ CLOSED
DECKEL/ FÜR KANISTER WEITHALS/ GESCHLOSSEN

80012043



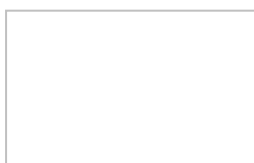
OPTIC-PAPER DRY/ [5X30 SHEETS]
OPTIKPAPIER TROCKEN/ [5X30 BLATT]

80000017



VACUUM GREASE KRYTOX GPL224
VAKUUMFETT KRYTOX GPL224 1/2 OZ TUBE

80005026



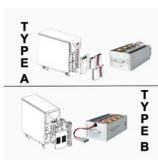
SPIRAL TUBE / ID=102MM / L=0,5M / SUCTION HOSE / PVC / SUPERELASTIC
SCHLAUCH SPIRAL / ID=102MM / L=0,5M / SAUGSCHLAUCH / PVC / SUPERELASTIC

47501026

Accessories

Photo
Foto

Description
Bezeichnung



BATTERY KIT FOR UPS SECURITY PLUS(II) / 4 RACKS / COMP. WITH USV:
77020133 + 77020141

AKKUSSET FÜR USV SECURITY PLUS (II) / 4 EINSCHÜBE / KOMP. MIT USV:
77020133 + 77020141

69001007

SPECTROGREEN · FMT46 (2020)



PARTS SET PARTICLE FILTER AR-LINE
TEILESATZ PARTIKELFILTER AR-ZULEITUNG

71000845



PATCH CABLE/ CROSS OVER/ RJ45-RJ45/ CAT.5/ L=3M/ GRAY
PATCHKABEL/ CROSS OVER/ RJ45-RJ45/ KAT.5/ L=3M/ GRAU

75120032



ARGON HUMIDIFIER TWO-CHANNEL ELEGRA CPL.
BEFEUCHTER ARGON ZWEIKANAL ELEGRA KPL.

75460543



HOLDER ARGON HUMIDIFIER
HALTER ARGONBEFEUCHTER

75560504



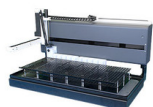
AUTOSAMPLER OILS-7400/ 60 POSITION RACK
PROBENGEBER OILS-7400/ 60 POSITIONEN RACK

77060517



UNINTERRUPTIBLE POWER SUPPLY 6000VA/ 208-240/104-240VAC/ 50/60HZ/
UNTERBRECHUNGSFREIE SPANNUNGSVERSORGUNG/ 6000VA/ 208-240/104-
240VAC/ 50/60HZ/

77020141



AUTOSAMPLER OILS-7600/ 60 POSITION RACK
PROBENGEBER OILS-7600/ 60 POSITIONEN RACK

77060518

SPECTROGREEN · FMT46 (2020)



ASXPRESS - AQUEROUS VERSION FOR ASX

ASXPRESS - AQUEROUS VERSION FÜR ASX

77060509



ASXPRESS - OIL VERSION FOR ASX

ASXPRESS - ÖL VERSION FÜR ASX

77060508



BENCH FOR ASSESSORIES/ D900/ W750/ H743MM/ MOVEABLE

TISCH FÜR ZUBEHÖR/ L900/ B750/ H743MM/ FAHRBAR

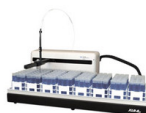
78000002



BENCH FOR ARCOS/ D1500/ W750/ H743MM/ NOT MOVEABLE

TISCH FÜR ARCOS/ L1500/ B750/ H743MM/ NICHT FAHRBAR

78000003



AUTOSAMPLER XLR-8-60

PROBENGEBER XLR-8-60

78280114



EXTERNAL TRIGGER INTERFACE/ DIGITAL AND ANALOG

EXTERNAL TRIGGER INTERFACE/ DIGITAL UND ANALOG

77090037E



AUTOSAMPLER ASX-280/ W/O PUMP

PROBENGEBER ASX-280/ OHNE PUMPE

78280096

SPECTROGREEN · FMT46 (2020)



AUTOSAMPLER SDX HPLD
PROBENGEBER SDX HPLD

78280117



AUTOSAMPLER ASX-560/ W/O PUMP
PROBENGEBER ASX-560/ OHNE PUMPE

78280095



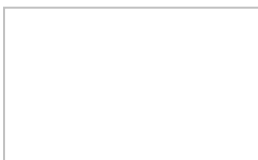
ULTRA SONIC NEBULIZER USN-5000AT+/ 100-120VAC/ 50-60HZ/ 520W
ULTRASCHALLZERSTÄUBER USN-5000AT+/ 100-120VAC/ 50-60HZ/ 520W

78997023



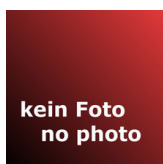
ULTRA SONIC NEBULIZER USN-5000AT+/ 220-240VAC/ 50-60HZ/ 520W
ULTRASCHALLZERSTÄUBER U-5000AT+/ 220-240VAC/ 50-60HZ/ 520W

78997024



AUTOSAMPLER AIM3300
AUTOSAMPLER AIM3300

78990092



AUTOSAMPLER HT1211I/ WITHOUT PUMP/ INCL. RACKS 2*15 ML TUBE, 1*50 ML TUBE
AUTOSAMPLER HT1211I/ OHNE PUMPE/ INKL. RACKS 2*15 ML TUBE, 1*50 ML TUBE

78310001

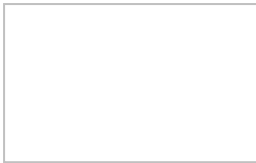
SPECTROGREEN · FMT46 (2020)



USB-STICK 32GB

USB-STICK 32GB

80961121



AUTOMATIC SAMPLE CHANGER WITH PUMP / 48x10ML + 27x50ML

AUTOMATISCHER PROBENWECHSLER MIT PUMPE / 48*10ML + 27*50ML

78990094
