

## SPECTROBLUE · FME16/26

---

### Measuring chamber

---

Photo  
Foto

Description  
Bezeichnung

---



FORK CLAMP WITH SET SCREW/ KS19/ STAINLESS STEEL  
KLEMME GABEL MIT FESTSTELLSCHRAUBE/ KS19/ EDELSTAHL

**44503013**

---



LOAD COIL POWER OSCILLATOR AIR-COOLED  
ARBEITSSPULE FÜR GENERATOR LUFTGEKÜHLT

**46203047**

---



FUNNEL/ FHX+FMX  
TRICHTER/ FHX+FMX

**47250630**

---



WINDOW 90\*70 ATHERMAL  
FENSTER 90\*70 ATHERMAL

**47200037**

---



GASKET ADAPTER TUBE TORCH/ VITON  
DICHTUNG ADAPTERROHR TORCH/ VITON

**47510268E**

---



SEAL ADAPTER TUBE TORCH  
DICHTUNG ADAPTERROHR TORCH

**47510263**

---

## SPECTROBLUE · FME16/26

---



CONTACT SPRING CL8/ L=400MM

KONTAKTFEDER CL8/ L=400MM

**64068378**

---



HOLDER KIT FOR LOAD COIL SPECTROBLUE

TEILESATZ HALTER FÜR ARBEITSSPULE SPECTROBLUE

**71000442**

---



HOLDING TORCH COMPLETE

AUFNAHME TORCH KOMPLETT

**75180059**

---



ADJUSTING TOOL COIL GENERATOR GENESIS

SPULENAUSRICHTLEHRE GENERATOR

**75260116**

---



GUIDING PIN INDUCTOR AND ADJUSTING GAUGE

FÜHRUNGSDORN SPULEN- UND AUSRICHTLEHRE

**75360547**

---



HELIX TEFLON SEAL

DICHTUNG HELIX TEFLON

**47350064**

---

### Sample introduction systems

---

Photo  
Foto

Description  
Bezeichnung

---

## SPECTROBLUE · FME16/26

---



SAMPLE INTRODUCTION SYSTEM HIGH SALTS >2% - EOP/ CROSSFLOW/ SCOTT/  
DEMOUNTABLE TORCH/ 3.0MM/ ADDITIONAL GAS/ ARN HUMIDIFIER

PROBENEINTRAGSSYSTEM HOHE SALZE >2% - EOP/ CROSSFLOW/ SCOTT/  
ZERLEGBARE TORCH/ 3,0MM/ ZUSATZGAS/ AR-BEFEUCHTER

**75360526**

---



SAMPLE INTRODUCTION SYSTEM STANDARD - EOP/ CROSSFLOW/ SCOTT/  
DEMOUNTABLE TORCH/ 2.0MM

PROBENEINTRAGSSYSTEM STANDARD - EOP/ CROSSFLOW/ SCOTT/ ZERLEGBARE  
TORCH/ 2,0MM

**75360523**

---



SAMPLE INTRODUCTION SYSTEM HF RESISTANT - EOP/ MIRAMIST/ CYCLONIC HF  
RESISTANT/ DEMOUNTABLE TORCH/ 2.5MM AL2O3

PROBENEINTRAGSSYSTEM HF-FEST - EOP/ MIRAMIST/ ZYKLONISCH HF-FEST/  
ZERLEGBARE TORCH/ 2,5MM AL2O3

**75360525**

---



SAMPLE INTRODUCTION SYSTEM MOD. LICHTE - EOP/ MODIFIED LICHTE/  
CYCLONIC/ DEMOUNTABLE TORCH/ 2.0MM

PROBENEINTRAGSSYSTEM MOD. LICHTE - EOP/ MODIFIZIERTER LICHTE/  
ZYKLONISCH/ ZERLEGBARE TORCH/ 2,0MM

**75360524**

---



SAMPLE INTRODUCTION SYSTEM STANDARD OIL - EOP/ CROSSFLOW/ SCOTT/  
DEMOUNTABLE TORCH/ 1.8MM

PROBENEINTRAGSSYSTEM STANDARD ÖL - EOP/ CROSSFLOW/ SCOTT/  
ZERLEGBARE TORCH/ 1,8MM

**75360527**

---



SAMPLE INTRODUCTION SYSTEM HIGH SALTS <2% - EOP/ CROSSFLOW/ SCOTT/  
DEMOUNTABLE TORCH/ 3.0MM/ ADDITIONAL GAS

PROBENEINTRAGSSYSTEM HOHE SALZE <2% - EOP/ CROSSFLOW/ SCOTT/  
ZERLEGBARE TORCH/ 3,0MM/ ZUSATZGAS

**75360549**

---

## SPECTROBLUE · FME16/26

---



SAMPLE INTRODUCTION SYSTEM CONCENTRIC - EOP/ SEASPRAY/ CYCLONIC/  
DEMOUNTABLE TORCH/ 2.0MM

PROBENEINTRAGSSYSTEM KONZENTRISCH - EOP/ SEASPRAY/ ZYKLONISCH/  
ZERLEGBARE TORCH/ 2,0MM

**75360564**

---



SAMPLE INTRODUCTION SYSTEM OILS WITH UNDISSOLVED SOLIDS - EOP/  
BURGENER/ CYCLONIC/ DEMOUNTABLE TORCH/ 1.8+2.0MM

PROBENEINTRAGSSYSTEM PARTIKEL IN ÖL - EOP/ BURGENER/ ZYKLONISCH/  
ZERLEGBARE TORCH/ 1,8+2,0MM

**75360528**

---



SAMPLE INTRODUCTION SYSTEM VOLATILE ORGANICS - EOP/ ISOMIST/  
TWISTER/ JACKETED CYCLONIC/ DEMOUNTABLE TORCH/ 1.2MM/ FME26+FME36

PROBENEINTRAGSSYSTEM FLÜCHTIGE ORGANIK - EOP/ ISOMIST/ TWISTER/  
UMMANTELT ZYKLONISCH/ ZERLEGBARE TORCH/ 1,2MM/ FME26+FME36

**75560552**

---

### Glass ware, torches, nebulizer

---

Photo  
Foto

Description  
Bezeichnung



SPRAY CHAMBER SCOTT OD36/ DURAN/ KS19/9

ZERSTÄUBERKAMMER SCOTT AD36/ DURAN/ KS19/9

**48105078**

---



NEBULIZER CHAMBER HF-RESISTANT/ KS19/9

ZERSTÄUBERKAMMER HF FEST/ KS19/9

**48105081**

---

## SPECTROBLUE · FME16/26

---



ADAPTOR NEBULIZER CHAMBER 90°/ KS13/5 SPHERICAL GROUND JOINT SMALL  
ADAPTER ZERSTÄUBERKAMMER 90°/ KS13/5 KUGELSCHLIFF KLEIN

**48205048**

---



GLASS TUBE TORCH L=112MM/ EOP  
GLASKÖRPER TORCH L=112MM/ EOP

**48205043**

---



NEBULIZER CHAMBER ZYCLON F.MODIF.LICHTE KS18/9  
ZERSTÄUBERKAMMER ZYKLON F. MODIF. LICHT E KS18/9

**48105079**

---



ADAPTER NEBULIZER CHAMBER BENT/ HF-RESISTANT/ EOP  
ADAPTER ZERSTÄUBERKAMMER GEBOGEN/ HF-FEST/ EOP

**48105083**

---



NEBULIZER CHAMBER ZYCLON BURGNER/ KS19/9  
ZERSTÄUBERKAMMER ZYKLON BURGNER/ KS19/9

**48105080**

---



INJECTION TUBE ID=2.5MM/ L=108MM/ AL2O3  
INJEKTORROHR ID=2,5MM/ L=108MM/ AL2O3

**48807027**

---



INJECTION TUBE ID=1.8MM/ L=108MM/ QUARTZ GLASS  
INJEKTORROHR ID=1,8MM/ L=108MM/ QUARZGLAS

**48807023**

---

## SPECTROBLUE · FME16/26

---



ADAPTER NEBULIZER CHAMBER 90°

ADAPTER ZERSTÄUBERKAMMER 90°

**48205046**

---



INJECTION TUBE ID=2.0MM/ L=108MM/ QUARTZ GLASS

INJEKTORROHR ID=2,0MM/ L=108MM/ QUARZGLAS

**48807024**

---



SPRAY CHAMBER SCOTT/ OD36/ QUARTZ/ HEAVY DUTY

ZERSTÄUBERKAMMER SCOTT/ AD36/ QUARZ/ HOHE BEANSPRUCHUNG

**48105088**

---



INJECTION TUBE ID=3.0MM/ L=108MM/ QUARTZ GLASS

INJEKTORROHR ID=3,0MM/ L=108MM/ QUARZGLAS

**48807025**

---



ADAPTOR ADDITIONAL GAS 90° KS19/9 FME

ADAPTER ZUSATZGAS 90° KS19/9 FME

**48205050**

---



PART KIT GLASS PARTS EOP

TS GLASTEILE TORCH EOP

**71000426**

---



CROSS FLOW NEBULIZER STANDARD/ FOR ICP

CROSS FLOW ZERSTÄUBER STANDARD/ FÜR ICP

**75060502**

---

## SPECTROBLUE · FME16/26

---

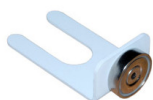


ADAPTER NEBULIZER CHAMBER DRAIN CHANNEL

ADAPTER ZERSTÄUBERKAMMER ABFLUSS

**75160547**

---



MOUNTING BRACKET SPRAY CHAMBER 15MM

HALTEWINKEL ZERSTÄUBERKAMMER 15MM

**75260191**

---



PLASTIC PARTS KIT TORCH ASSEMBLED

KST-TEILESATZ TORCH TWIN INTERFACE MONTIERT

**75360573**

---



NEBULIZER MODIFIED WIDTH FOR AQUEOUS APPLICATIONS COMPLETE WITH FITTINGS AND TUBE FOR SAMPLE INPUT

ZERSTÄUBER MODIF. LICHTE FÜR WÄSSRIGE APPKLIKATIONEN KOMPLETT MIT ANSCHLÜSSEN UND SCHLAUCH FÜR PROBENZUFÜHRUNG

**76060529**

---



NEBULIZER BURGNER T2002

ZERSTÄUBER BURGNER T2002

**76060534**

---



SPRAY CHAMBER ISOMIST XR KIT

ZERSTÄUBERKAMMER ISOMIST XR KIT

**76060550**

---

## SPECTROBLUE · FME16/26

---



NEBULIZER MICROMIST 0,2ML/MIN INCL. EZYFIT + EZYLOK  
 ZERSTÄUBER MICROMIST 0,2ML/MIN INKL. EZYFIT + EZYLOK

**76060549**

---



NEBULIZER BURGNER MIRAMIST  
 ZERSTÄUBER BURGNER MIRAMIST

**76060541**

---



CAPILLARY PEEK/ ID0.75MM/ AD1/16"/ GREEN  
 KAPILLARE PEEK/ ID0,75MM/ AD1/16"/ GRÜN

**80012018**

---

### Optics, light path

---

Photo  
Foto

Description  
Bezeichnung



SAMPLER AIR COOLED OPI  
 SAMPLER LUFTGEKÜHLTES OPI

**46311264**

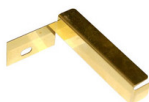
---



CLAMP SCREW LENS  
 KLEMMSCHRAUBE LINSE

**46112136**

---



ADDITIONAL PLATE AIR CANAL  
 ZUSATZBLECH LUFTKANAL

**46303033**

---



## SPECTROBLUE · FME16/26

---



SAMPLER/ AIR-COOLED OPI

SAMPLER/ LUFTGEKÜHLTES OPI

**46901081**

---



SAMPLER - HEAVY DUTY - AIR COOLED OPI

SAMPLER - HOCHBELASTBAR - LUFTGEKÜHLTES OPI

**46901078**

---



RING NUT AIR COOLED OPI

GEWINDERING LUFTGEKÜHLTES OPI

**46311265**

---



RING NUT - HEAVY DUTY - AIR COOLED OPI (FOR SPECTROBLUE < SN 13006979)

GEWINDERING - HOCHBELASTBAR - LUFTGEKÜHLTES OPI (FÜR SPECTROBLUE < SN 13006979)

**46901077**

---



RING NUT - HEAVY DUTY - AIR COOLED OPI (FOR SPECTROBLUE >= SN 13006979)

GEWINDERING - HOCHBELASTBAR - LUFTGEKÜHLTES OPI (FÜR SPECTROBLUE >= SN 13006979)

**46901079**

---



WASHER PTFE/ OD=22.4MM/ ID=19.5MM/ T=0.2MM/ [10 PCS.]

SCHEIBE PTFE/ AD=22,4MM/ ID=19,5MM/ T=0,2MM/ [10 STK.]

**47311011**

---

## SPECTROBLUE · FME16/26

---

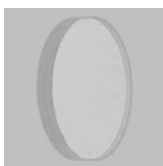


LENSE PLANKONVEX D22.4/ R50.5

LINSE PLANKONVEX D22,4/ R50,5

**48301033**

---

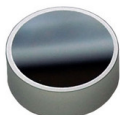


WINDOW QUARTZ GLASS D22.4/T1.5

FENSTER QUARZGLAS D22,3/T1,5 SUBBRASIL/CORNING 7940

**48303006**

---



MIRROR CONCAVE R = -300/ ARCOS+BLUE

SPIEGEL KONKAV R = -300/ ARCOS+BLUE

**48309018**

---



OPTICAL PLASMA INTERFACE/ AIR COOLED/ ICP-FMX

OPTISCHES PLASMA INTERFACE/ LUFTGEKÜHLT/ ICP-FMX

**75080548**

---



OPT. PLASMA INTERFACE VERS.2/ CORROSION RESISTANT

OPT. PLASMA INTERFACE VERS.2/ KORROSIONSBESTÄNDIG

**75080564**

---



FLAP ACTUATOR FMX

KLAPPEN VERSTELLUNG FMX

**75180131**

---



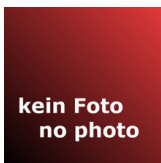
PRISMA ACTUATOR INCL. PRISMA FMX

PRISMA-VERSTELLUNG INKL. PRISMA FMX

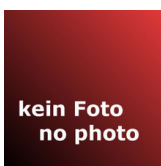
**75180130**

---

## SPECTROBLUE · FME16/26



REPAIR KIT INTERFACE CORROSION RESISTANT FME26  
 REPARATURSATZ EINKOPPLUNG KORROSIONSFEST FME26  
**75270539**



REPAIR KIT INTERFACE CORROSION RESISTANT FMS26+FMX16  
 REPARATURSATZ EINKOPPLUNG KORROSIONSFEST FMS26+FMX16  
**75270538**

### Gas system, tubings, fittings

| Photo<br>Foto   | Description<br>Bezeichnung   |
|---|--|
|  | RING GASKET FOR PIPE OR TUBE/ OD=6MM/ [10 PCS.]<br>DICHRING FÜR SCHLAUCH ODER ROHR/ AD=6MM/ [10 STK.]<br><b>44302014</b> |
|  | PLUG IN TUBING AD8MM [10 PCS.]<br>HÜLSE EINSTECK D=5/8 [10 STÜCK]<br><b>44302491</b>                                     |
|  | NUT UNION/ D=8MM/ [10 PCS.]<br>MUTTER ÜBERWURF/ D=8MM/ [10 STK.]<br><b>44302022</b>                                      |
|  | COUPLER M5/ STAINLESS STEEL / VITON-WASHER<br>KUPPLUNG M5/ V4A/ VITON-DICHTUNG<br><b>44302511</b>                        |

## SPECTROBLUE · FME16/26

---



PLUG NOZZLE 4\*6MM/ BRASS/ DURNICOATED/ WITH TUBE CONNECTION/ W.O. WASHER

STECKTÜLLE 4X6MM/ MESSING/ DURNICOATIERT/ MIT SCHLAUCHANSCHLUSS/ OHNE DICHTUNG

**44302072**

---



THREADED JOINT STRAIGHT SCREW-IN THREAD:1/8" FOR PIPE OR HOSE WITH OD=6MM

VERSCHRAUBUNG GERADE EINSCHR. R1/8" FÜR SCHLAUCH ODER ROHR MIT AD=6MM

**44302041**

---



UNION JOINT BULKHEAD R1/8"\*16.5

VERSCHRAUBUNG SCHOTT R1/8\*16,5

**44302109**

---



PLUG-IN NIPPLE/ 4X6MM/ STAINLESS STEEL/ WITHOUT VALVE

STECKNIPPEL 4X6MM/ EDELSTAHL/ OHNE VENTIL

**44502006**

---



UNION JOINT ELBOW, SCREWABLE 1/8 D8 THREAD:R1/8 TUBE OR HOSE:OD=8MM

VERSCHRAUBUNG WINKEL EINSCHR. R1/8 GEWINDE:R1/8 SCHLAUCH OD.ROHR:AD=8MM

**44302167**

---



UNION JOINT HOSE 1/8" -6MM

VERSCHRAUBUNG REDUZIER SCHLAUCH 1/8"-6MM

**44302259**

---

## SPECTROBLUE · FME16/26

---



THEREADED JOINT/ ELBOW/ M5/ PUSH IN/ TUBE 4MM/ DEGREASED/ VITON  
VERSCHRAUBUNG EINSCHRAUB/ WINKEL/ M5/ PUSH IN/ SCHLAUCH 4MM/  
FETTFREI/ VITONDICHTUNG

**44302480**

---



COUPLING QUICK CONNECTION/ 3X4MM/ FKM SEAL/ STAINLESS STEEL/ FREE  
PASSAGE

KUPPLUNG SCHNELLVERSCHLUSS 3X4MM/ FKM DICHTUNG/ EDELSTAHL/ FREIER  
DURCHGANG

**44302493**

---



QUICK-SNAP COUPLING PLUG/ CONNECTION 1/8"

SCHNELLKUPPLUNG STECKER/ ANSCHLUSS 1/8"

**44303015**

---



PLUG-IN NIPPLE/ 3X4MM/ STAINLESS STEEL/ WITHOUT VALVE

STECKNIPPEL 3X4MM/ EDELSTAHL/ OHNE VENTIL

**44302494**

---



QUICK-SNAP COUPLING SOCKET 1/8" CONNECTION 1/8"

SCHNELLKUPPLUNG KÖRPER 1/8" ANSCHLUSS 1/8"

**44303016**

---



PLUG-IN Y/ AD4

Y STECKABZWEIG/ AD4

**44702072**

---



STRAIGHT SCREW FITTING/ TUBE 4MM/ THREAD G1/8"/ PVDF/ WITH FKM O-  
RING/ 10BAR

VERSCHRAUBUNG EINSCHRAUB GERADE/ SCHLAUCH 4MM/ GEWINDE G1/8"/  
PVDF/ MIT FKM O-RING/ 10BAR

## SPECTROBLUE · FME16/26

---

**44702360**

---



TUBE TYGON(PVC)/ OD1/4"/ ID1/8"/ WALL THICKNESS 1/16"  
SCHLAUCH TYGON(PVC)/ AD1/4"/ ID1/8"/ WANDSTÄRKE 1/16"

**47201005**

---



CAPILLARY TUBE 1/8"\*0.56MM/V4A READY-MADE TO 500MM LENGTH  
KAPILLARROHR 1/8"\*0,56MM/V4A KONFEKTIONIERT AUF 500MM LÄNGE

**46506002**

---



TUBE TYGON(PVC)/ AD2.79/ ID0.89/ [10 M.]  
SCHLAUCH TYGON(PVC)/ AD2,79/ ID=0,89/ [10 M.]

**47201022**

---



TUBE PTFE/ OD=6MM/ ID=4MM/ WHITE / [5 M.]  
SCHLAUCH PTFE/ AD=6MM/ ID=4MM/ WEISS / [5 M.]

**47301021**

---



TUBE TYGON(PVC)/ AD1/2"/ ID3/8"/ WALL THICKNESS 1/16"  
SCHLAUCH TYGON (PVC)/ ID=9,5MM/ AD=12,7MM/ WANDSTÄRKE=1,6MM

**47201031**

---



HOSE PTFE/ OD4/ ID3/ NATURAL  
SCHLAUCH PTFE/ AD4/ ID3/ NATUR

**47301024**

---

## SPECTROBLUE · FME16/26

---



TUBE VITON/ OD=3.53MM/ ID=1.85MM/ [3 M.]  
SCHLAUCH VITON/ AD=3,53MM/ ID=1,85MM/ [3 M.]

**47501011**

---



ANGLE JOINT PP FOR TUBE ID=9-11MM [5 PCS.]  
WINKELVERBINDER PP FÜR SCHLAUCH ID=9-11MM [5 STÜCK]

**47250586**

---



TUBE PTFE OD=8MM/ ID=5MM/ NATURE  
SCHLAUCH PTFE AD8/ID5/NATUR

**47301020**

---



TUBE PE/ OD=6/ ID=4/ [10 M.]  
SCHLAUCH PE/ AD6/ ID4/ [10 M.]

**47700001**

---



SOLENOID VALVE 5/2/ 24VDC/ INCL.THREADED JOINT  
MAGNETVENTIL 5/2 WEGE/ 24VDC/ INKL. VERSCHRAUBUNG

**57005218E**

---



SET SOLENOID VALVE 5/2/ 24VDC/ INCL. RESTRICTION VALVE WITH SILENCER  
M5  
SET MAGNETVENTIL 5/2 WEGE/ 24VDC/ INKL. SCHALLDÄMPFER MIT DROSSEL M5

**71000843**

---



CYLINDER/ D=10/ HUB=15  
ZYLINDER/ D=10/ HUB=15

**73008060**

---

## SPECTROBLUE · FME16/26

---



TUBE PTFE/ 8X1.5MM/ L=5M/ ONE-SIDED SCREW CONNECTION  
SCHLAUCH PTFE/ 8X1,5MM/ L=5M/ EINSEITIGE VERSCHRAUBUNG

**75060956**

---



OPTIK FLUSH KIT ARCOS/BLUE/GREEN  
OPTIK FLUSH KIT ARCOS/BLUE/GREEN

**75080516**

---



ADDITION FLUSH VALVE  
ZUSATZSPÜLBLOCK TORCH

**75180129**

---



X-CHANGE ARGON CONTROL UNIT DMB / WITHOUT ADDITIONAL GAS/ MAX.  
INPUT PRESSURE: 7 BAR/ NEB: 0,4-1,5NL/MIN.

AUSTAUSCH GASREGELEINHEIT DMB/ 4 KANÄLE / OHNE ZUSATZGAS/ MAX.  
EINGANGSDRUCK: 7 BAR/ NEB: 0,4-1,5NL/MIN.

**75260600X**

---



ARGON CONTROL UNIT/ 4-CHANNELS/ 8 BAR/ WITH ADD. GAS/ NEB: 0.1-  
1.5NL/MIN.

REGELEINHEIT GAS DMB/ 4-KANAL/ 8 BAR/ MIT ZUSATZGAS/ NEB: 0,1-  
1,5NL/MIN.

**75460549**

---



ARGON CONTROL UNIT/ 4-CHANNELS/ 8 BAR/ NEB: 0,1-1,5NL/MIN.

REGELEINHEIT GAS DMB/ 4-KANAL/ 8 BAR/ NEB: 0,1-1,5NL/MIN.

**75460548**

---



## SPECTROBLUE · FME16/26

---



PUMP DIAPHRAGM 24VDC/ 0,65A/ PMAX 2,4 BAR/ TYPE PM23089-86

PUMPE MEMBRAN 24VDC/ 0,65A/ PMAX 2,4 BAR/ TYP PM23089-86

**77060506**

---



TUBE PTFE OD=12MM/ ID=10MM

SCHLAUCH PTFE AD12/ID10

**47301019**

---



TUBE SET VITON/ 100MM/ CROSS FLOW NEBULIZER

SCHLAUCHSET VITON/ 100MM/ CROSS FLOW ZERSTÄUBER

**47501015E**

---



TUBE/ PTFE/ OD3/ ID2/ NATURAL/ [12 M.]

SCHLAUCH/ PTFE/ AD3/ ID2/ NATUR/ [12 M.]

**47301023**

---



TUBE PTFE/ OD1.2/ ID0.6/ NATURAL/ [10M]

SCHLAUCH PTFE/ AD1,2/ ID0,6/ NATUR/ [10 M.]

**47301022**

---



COUPLING 4X6MM/ BRASS/ DURNICOATED/ WITH TUBE CONNECTION/ INCL. BUNAN GASKET

KUPPLUNG 4X6MM/ MESSING/ DURNICOATIERT/ MIT SCHLAUCHANSCHLUSS/ INKL. BUNAN-DICHTUNG

**44302077**

---

## SPECTROBLUE · FME16/26



RING GASKET FOR PIPE OR TUBE/ OD=8MM/ [10 PCS.]  
 DICHRING FÜR SCHLAUCH ODER ROHR/ AD=8MM/ [10 STK.]  
**44302013**



NUT UNION/ D=6MM/ [10 PCS.]  
 MUTTER ÜBERWURF/ D=6MM/ [10 STK.]  
**44302023**

### Electr. Components

| Photo<br>Foto   | Description<br>Bezeichnung  |
|---|---|
|  | <p>RELAIS SOLID STATE 24VDC/5A<br/>           RELAIS SOLID STATE 24VDC/5A<br/> <b>57002075</b></p>  |
|  | <p>CONTACTOR/ 24VDC/ 220/230VAC/ 7,5KW<br/>           SCHÜTZ/ 24VDC/ 220/230VAC/ 7,5KW<br/> <b>57003103</b></p>   |
|  | <p>FREE-WHEELING DIODE WITH LED<br/>           DIODE FREILAUF MIT LED<br/> <b>64004113</b></p>  |
|  | <p>RETAINER FOR RELAY SOCKET RT78625/ PLASTIC/ BLACK/ 15.7MM+25.5MM<br/>           HALTEBÜGEL FÜR RELAISFASSUNG RT78625/ KUNSTSTOFF/ SCHWARZ/<br/>           15,7MM+25,5MM<br/> <b>64004104</b></p> |

## SPECTROBLUE · FME16/26

---



SOCKET PLUG IN 230V/ 12A/ 2-POLE/ FOR PRINT RELAY/ FOR DIN-RAIL WITH SCREW CONNECTION

FASSUNG STECK 230V/ 12A/ 2POL/ FÜR PRINT RELAIS/ FÜR DIN-SCHIENE MIT SCHRAUBANSCHLUSS

**64004102**

---



TERMINAL SAFETY PLUG UP TO 6.3A

KLEMME SICHERUNGSTECKER BIS 6,3A

**64068056**

---



SENSOR TEMPERATURE PT1000

FÜHLER TEMPERATUR PT1000

**58090029**

---



TEMPERATURE PROBE KTY81-210

FÜHLER TEMPERATUR KTY81-210

**58090005**

---



CIRCUIT BREAKER 25A 2POLE

SICHERUNG AUTOMAT 25A/DUO

**68005329**

---



FUSE 4A/250V/SLOW-BLOW/5\*20MM/DIN41662 [10 PCS.]

SICHERUNG 4A/250V/TRÄGE/5\*20MM/DIN41662 [10 STÜCK]

**68005881**

---

## SPECTROBLUE · FME16/26

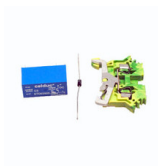
---



CIRCUIT BREAKER 16A 2POLE  
SICHERUNG AUTOMAT 16A/DUO

**68005330**

---



CONVERSION KIT K4 57002032 SPECTROBLUE  
TEILESATZ UMRÜSTUNG K4 57002032 SPECTROBLUE

**71000496**

---

### Electr. assemblies, boards

---

Photo  
Foto

Description  
Bezeichnung



FILTER LINE/ 250V/ 1X25A  
FILTER NETZ/ 250V/ 1X25A

**57004036**

---



CONVERSION KIT COOLER 77060073 FOR FMX16  
UMRÜSTSATZ KÜHLERSYSTEM 77060073 200W MV SPECTROBLUE EOP/SOP

**71000556**

---



HIGH VOLTAGE IGNITION  
HOCHSPANNUNGSZÜNDUNG

**75050509**

---



CONVERSION SET FOR POWERSUPPLY 77020132  
UMRÜSTSATZ FÜR NETZTEIL 77020132

**75170003**

---

## SPECTROBLUE · FME16/26

---



READ OUT SYSTEM DMB CCD 16-CHANNEL  
AUSLESESYSTEM DMB CCD 16-KANAL

**76020019**

---

kein Foto  
no photo

CONVERSION KIT EK1406/ FMX26  
UMRÜSTSATZ EK1406/ FMX26

**75460588**

---



OSCILLATOR 27MHZ/ 2.3KW/ AIR COOLING  
GENERATOR 27MHZ/ 2,3KW/ LUFTGEKÜHLT

**76023120E**

---



OSCILLATOR 27MHZ/ 2.3KW/ AIR COOLING  
GENERATOR 27MHZ/ 2,3KW/ LUFTGEKÜHLT

**76023120X**

---



POWER SUPPLY/ SP-320-24/ 88-264VAC/ 24VDC/ 13A  
NETZTEIL/ SP-320-24/ 88-264VAC/ 24VDC/ 13A

**77020081**

---



HIGH VOLTAGE POWER SUPPLY/ 4.5KV/ 0.8A/ 230VAC  
NETZTEIL HOCHSPANNUNG 4,5KV/ 0,8A/ 230VAC

**77020076**

---



COOLING SYSTEM WITH MV/ 230V/ 50/60Hz/ 200W/ FAN 24VDC  
UMLUFTKÜHLER MIT MAGNETVENTIL/ 230V/ 200W/ 50/60 Hz/ LÜFTER 24VDC

**77060073**

---

## SPECTROBLUE · FME16/26

---



ROS COMPACT ETHERNET CONTROLLER  
 ROS COMPACT ETHERNET CONTROLLER  
**EK1406--**



DSP ETHERNET CONTROLLER  
 DSP ETHERNET CONTROLLER  
**EK0808--**



AMPLIFIER CCD 2MHZ  
 VERSTÄRKER CCD 2MHZ  
**EK0411--**



CONTROLLER DATA AQUSITION CCD/PM CDA BOARD  
 STEUERUNG DATENERFASSUNG CCD/PM  
**EK0310--**



MEASUREMENT AND CONTROLL BOARD DMB ICP/ICP-MS INCL.  
 SYSTEMSOFTWARE  
 MESS-/REGELKARTE MIT DMB ICP/ICP-MS INCL. SYSTEMSOFTWARE  
**EK0014B3**



AD CONVERTER DATA LOGGING CCD/PM ADC BOARD  
 AD KONVERTER DATENERFASSUNG CCD/PM ADC BOARD  
**EK0311-2**

---

### Switches, cables, lamps

| Photo | Description |
|-------|-------------|
| Foto  | Bezeichnung |

---

## SPECTROBLUE · FME16/26

---



ACTUATOR SAFETY SWITCH  
ACTUATOR SICHERHEITSSCHALTER 440K-A21006

**46404041**

---



CAM SWITCH 2S 32A 13KW  
SCHALTER NOCKEN 2S 32A 13KW

**65010309**

---



SWITCHING ELEMENT KEY BUTTON/ BR04/ 2 BREAK CONTACTS  
SCHALTELEMENT TASTER/ BR04/ 2 ÖFFNER

**65011019**

---



FERRITE BUSH OD13/ 25X25X28/ WITH SWING OPEN SYNTHETIC COVER  
FERRITHÜLSE ID=13/ 25X25X28/ MIT KUNSTSTOFFGEHÄUSE ZUM AUFKLAPPEN

**64000050**

---



FLOAT SWITCH LS3 TYPE4 M12\*1,75  
SCHALTER SCHWIMMER LS3 TYP4 M12\*1,75 MIT MUTTER M12\*1,75

**65029005**

---



SWITCH TEMPERATURE BIMETAL/ NC-CONTACT/ 35/50°C +- 3-4°C/ CONNECTION  
FLAT PLUG 6.35MM/ 250VAC/10A/ 30VDC/5A

SCHALTER TEMPERATUR BIMETALL/ NC-KONTAKT/ 35/50°C +- 3-4°C/ ANSCHLUSS  
FLACHSTECKER 6,35MM/ 250VAC/10A/ 30VDC/5A

**65031005**

---

## SPECTROBLUE · FME16/26

---



PUSH SWITCH/ SUNK-IN MOUNTING/ BR04/ BLUE/ NOT ILLUMINATED  
TASTER DRUCK/ VERSENKTER EINBAU/ BR04/ BLAU/ NICHT BELEUCHTET

**65011074**

---



CABLE EARTH/ RING M5/ PLUG/ SPRING CONTACT/ L=170MM  
KABEL ERDUNG/ RING M5/ ARRETIERBAR/ FEDERKONTAKT/ L=170MM

**75020564**

---



CABLE CONTROL HVNT FMX  
KABEL STEUERUNG HVNT FMX

**75020568**

---



LIMIT SWITCH WITH ROLLER LEVEL  
ENDSCHALTER MIT ROLLENHEBEL

**75030078**

---



FLOW SENSOR AIR ICP  
STRÖMUNGSSENSOR LUFT ICP

**75030507**

---



CABLE TEMPERATURE SENSOR OPTICS/ FMXX6/FHX2X/ KA11 OUT OF CABLE SET  
75071421  
KABEL TEMPERATURENSOR OPTIK/ FMXX6/FHX2X/ KA11 AUS KABELSATZ  
7507142

**75020572**

---



## SPECTROBLUE · FME16/26

---



FLOW CONTROLLER AIR  
STRÖMUNGSWÄCHTER LUFT

**75030506**

---



KABLE DMB/ FMX  
KABEL DMB/ FMX

**75071422**

---



ADAPTER RPM SWITCH FAN STEP 1 - STEP 2  
ADAPTER DREHZAHLSCHALTUNG LÜFTER STUFE 1- STUFE 2

**75070049**

---



CABLE/ RJ45/ SNAP-IN/ PLUG/SOCKET  
KABEL/ RJ45/ EINBAU/ STECKER/BUCHSE

**75120043**

---



PATCH CABLE/ CROSS OVER/ RJ45-RJ45/ CAT.5/ L=10M/ GREY/ 4X2X0.14MM2/  
WITH FOIL SHILDING AND ANTI KINK BUSH/ 100MHZ

PATCHKABEL/ CROSS OVER/ RJ45-RJ45/ KAT.5/ L=10M/ GRAU/ 4X2X0,14MM2/  
MIT FOLIENSCHIRMUNG UND ROTER KNICKSCHUTZTÜLLE/ 100MHZ

**75120025**

---



CABLE SET PERISTALTIC PUMP POWER AND DRAIN LEVEL CABLE  
KABEL PERISTALTISCHE PUMPE POWER/DRAIN LEVEL KABEL

**75170599**

---

### Fans, filter mats

| Photo<br>Foto | Description<br>Bezeichnung |
|---------------|----------------------------|
|               |                            |

---

## SPECTROBLUE · FME16/26



FILTER MAT/ 490X430X20MM2/ FMX  
 FILTERMATTE/ 490X430X20MM2/ FMX

**47840032**



FAN RADIAL/ 230VAC/ 400W/ INCL. ADAPTER  
 LÜFTER RADIAL/ 230VAC/ 400W/ INKL. ADAPTER

**57007338E**



FAN AXIAL/ 24V/ 33MA/ 0.8W/ 40X40X10MM  
 LÜFTER AXIAL/ 24V/ 33MA/ 0,8W/ 40X40X10MM

**57007040**



FAN ASSEMBLY/ 120X120X25/ 24V/ 225M3/H/ INCL. PLUG  
 LÜFTER ASSEMBLY/ 120X120X25MM/ 24V/ 225M3/H/ MIT STECKER

**75050044**

### O-rings

Photo  
Foto

Description  
Bezeichnung



O-RING/ 19X3.5/ VITON/ 75 SHORE [10 PCS.]  
 O-RING/ 19X3,5/ VITON/ 75 SHORE/ [10 STK.]

**47510249E**



O-RING 25X2/ VITON/ [10 PCS.]  
 O-RING 25X2/ VITON/ [10 STK.]

**47510137E**

## SPECTROBLUE · FME16/26



O-RING 20X1/ VITON/ 75 SHORE/ [5 PCS.]

O-RING 20X1/ VITON/ 75 SHORE/ [5 STK.]

**47510275E**



O-RING 31X2/ VITON/ 75 SHORE/ [5 PCS.]

O-RING 31X2/ VITON/ 75 SHORE/ [5 STK.]

**47510302E**



O-RING 12X3.5/ FKM/ 75 SHORE/ [10 PCS.]

O-RING 12X3,5/ FKM/ 75 SHORE/ [10 STK.]

**47510262E**



SET O-RINGS FOR TORCH 75060213+75060214

SET O-RINGE FÜR TORCH 75060213+75060214

**71000428**




SPARE PART KIT O-RINGS FHX22

ERSATZTEILPAKET O-RINGE FHX22

**75270528**

### Peristaltic pumps / tubings

| Photo<br>Foto   | Description<br>Bezeichnung   |
|---|--|
|  | <p>BOX NUT M4/ ISO B-823/ [10 PCS.]</p> <p>MUTTER BLIND M4/ ISO B-832/ [10 STK.]</p> <p><b>42014306E</b></p> |

## SPECTROBLUE · FME16/26

---



TUBING CONNECTORS/ T-JOINT/ ID=1.6  
VERBINDER SCHLAUCH/ T-STÜCK/ ID=1,6

**44702029**

---



CONNECTOR TUBE/ STRAIGHT/ ID=1,6/ [25 PCS.]  
VERBINDER SCHLAUCH/ GERADE/ ID=1,6/ [25 STK.]

**44702035E**

---



CYLINDER WHEEL HEAD/ FOR 3-CHANNEL PERIST. PUMP TYPE: MP12-SM/3 DMB/  
FOR 71000249 (77040508,77040509)

ROLLENKNOPF/ FÜR 3-KANAL PERIST. PUMPE TYP: MP12-SM/3 DMB/ FÜR  
71000249(77040508,77040509)

**46103611**

---



CYLINDER WHEEL HEAD 4-CHANNEL FOR PERISTALTIC PUMP

ROLLENKOPF 4-KANAL FÜR PERISTALTISCHE PUMPE

**46103384**

---



TUBE TYGON (PVC)/ ID=0.89/ L=406MM/ 2 COLOR CODE STOPPER PUMP TUBE  
ORANGE/ORANGE/ [12 PCS.]

SCHLAUCH TYGON (PVC)/ ID=0,89/ L=406MM/ 2FACH FARBCODE STOPPER  
PUMPENSCHLAUCH ORANGE/ORANGE/ [12 STK.]

**47101003**

---



HOSE TYGON/ OD=2.74/ ID=1.02/ 2 STOPPER WHITE-WHITE/ LENGTH=400MM/  
[12 PCS.]

SCHLAUCH TYGON/ AD=2,74/ ID=1,02/ 2 STOPPER WEISS-WEISS/  
LÄNGE=400MM/ [12 STK.]

**47201051**

---

## SPECTROBLUE · FME16/26

---



TUBE TYGON (PVC)/ ID=1.75/ L=406MM/ 2 COLOR CODE STOPPER PUMP TUBE BLUE-GREEN/ [12 PCS.]

SCHLAUCH TYGON (PVC)/ ID=1,75/ L=406MM/ 2FACH FARBCODE STOPPER PUMPENSCHLAUCH BLAU-GRÜN/ [12 STK.]

**47101005**

---



HOSE TYGON/ OD=4.89/ ID=3.17/ 2 STOPPER BLACK-WHITE/ LENGTH=400MM/ [12 PCS.]

SCHLAUCH TYGON/ AD=4,89/ ID=3,17/ 2 STOPPER SCHWARZ-WEISS/ LÄNGE=400MM/ [12 STK.]

**47201052**

---



HOSE TYGON/ OD=2.48/ ID=0.76/ 2 STOPPER BLACK-BLACK/ LENGTH=400MM/ [12 PCS.]

SCHLAUCH TYGON/ AD=2,48/ ID=0,76/ 2 STOPPER SCHWARZ-SCHWARZ/ LÄNGE=400MM/ [12 STK.]

**47201050**

---



TUBE TYGON HC/ ID=0.38/ L=400MM / 2 COLOR CODE STOPPER PUMP TUBE ORANGE/GREEN/ [12 PCS.]

SCHLAUCH TYGON HC/ ID=0,38/ L=400MM / 2FACH FARBCODE STOPPER PUMPENSCHLAUCH ORANGE/GRÜN/ [12 STK.]

**47501016**

---



TUBE TYGON HC/ ID=0.89/ L=400MM / 2 COLOR CODE STOPPER PUMP TUBE ORANGE/ORANGE/ [12 PCS.]

SCHLAUCH TYGON HC/ ID=0,89/ L=400MM / 2FACH FARBCODE STOPPER PUMPENSCHLAUCH ORANGE/ORANGE/ [12 STK.]

**47501018**

---



TUBE VITON OD3,12/ID1,42

SCHLAUCH VITON AD3,12/ID1,42 VERLÄNGERUNG FÜR PUMPENSCHLAUCH

**47501014**

---

## SPECTROBLUE · FME16/26

---



TUBE VITON/ ID=1.3/ L=180MM/ 2 COLOR CODE STOPPER PUMP TUBE  
GREY/GREY/ [12 PCS.]

SCHLAUCH VITON/ ID=1,30/ L=180MM/ 2FACH FARBCODE STOPPER  
PUMPENSCHLAUCH GRAU/GRAU/ [12 STK.]

**47501020**

---



TUBE VITON/ ID=0.51/ L=180MM/ 2 COLOR CODE STOPPER PUMP TUBE  
ORANGE/YELLOW/ [12 PCS.]

SCHLAUCH VITON/ ID=0,51/ L=180MM/ 2FACH FARBCODE STOPPER  
PUMPENSCHLAUCH ORANGE/GELB/ [12 STK.]

**47501019**

---



VIBRATION ABSORBER/ FOR PERISTALT. PUMP/ B10X15/ M4/ [4 PCS.]

SCHWINGUNGSDÄMPFER/ FÜR PERISTALTISCHE PUMPE/ B10X15/ M4/ [4 STK.]

**47550022**

---



COUPLING RUBBER SM VITON PERISTALT. PUMP

KUPPLUNGSGUMMI SM VITON PERISTALT. PUMPE

**47550021**

---



ADJUSTING LEVER KIT PERISTALTIC PUMP 4-CHANNEL FOR 71000271

JUSTIERHEBEL KIT 4-KANAL PERIST. PUMPE TYP: MP12-SM/4 DMB ERSATZTEIL  
FÜR 71000271

**71000273**

---



PARTS SET PUMP PERIST. 4-CHANNEL 24VDC/ TYPE: MP12-SM/4 DMB WITHOUT  
FRONT PANEL

TEILESATZ PUMPE PERIST. 4-KANAL 24VDC/ TYP: MP12-SM/4 DMB OHNE  
FRONTPLATTE

**71000271**

---

## SPECTROBLUE · FME16/26

---



PRESS STRAP KIT FOR CYLINDER WHEEL HEAD 4-CHANNEL FOR 71000271

ANPRESSBÜGEL KIT FÜR 4-KANAL PERSTALT. PUMPE TYP:MP12-SM/4 DMB  
ERSATZTEIL FÜR 71000271

**71000272**

---



PRESS STRAP KIT/ FOR 3-CHANNEL PERIST. PUMP TYPE: MP12-SM/3 DMB/ FOR  
71000249 (77040508,77040509)

ANPRESSBÜGEL KIT/ FÜR 3-KANAL PERSTALT. PUMPE TYP: MP12-SM/3 DMB/ FÜR  
71000249 (77040508,77040509)

**71000248**

---



ADJUSTING LEVER KIT/ FOR 3 CHANNEL PERIST. PUMP TYPE: MP12-SM/3 DMB/  
FOR 71000249 (77040508,77040509)

JUSTIERHEBEL KIT/ FÜR 3-KANAL PERIST. PUMPE TYP: MP12-SM/3 DMB/ FÜR  
71000249 (77040508,77040509)

**71000250**

---



PARTS SET PUMP PERISTALTIC 3-CHANNEL/ 24VDC/ TYP: MP12-SM/3 DMB/  
WITHOUT FRONT PANEL/ SPARES FOR 77040508,77040509

TEILESATZ PUMPE PERISTALTIK 3-KANAL/ 24VDC/ TYP: MP12-SM/3 DMB/ OHNE  
FRONTPLATTE/ E-TEIL FÜR 77040508/77040509

**71000249**

---



BOARD SM DMB V2.0 COMPLETE/ SPARE PART FOR PERISTALTIC PUMP DMB

PLATINE SM DMB V2.0 KOMPLETT/ ERSATZTEIL FÜR PERISTALTISCHE PUMPE  
DMB

**71000834**

---



PERISTALTIC PUMP 3 CHANNEL/ VERSION 2 DMB/ INCLUDLING SCREENING  
SHIELD

PUMPE PERISTALTIK 3-KANAL/ VERSION 2 DMB/ INKLUSIVE SCHIRMBLECH

**75270555**

---

## SPECTROBLUE · FME16/26



PERISTALTIC PUMP 4 CHANNEL/ VERSION 2 DMB/ INCLUDLING SCREENING SHIELD

PUMPE PERISTALTIK 4-KANAL/ VERSION 2 DMB/ INKLUSIVE SCHIRMBLECH

**75270556**



TUBE TYGON (PVC)/ ID=1,3/ L=400MM/ 2 COLOR CODE STOPPER PUMP TUBE GREY/GREY/ [12 PCS.]

SCHLAUCH TYGON (PVC)/ ID=1,3/ L=400MM/ 2FACH FARBCODE STOPPER PUMPENSCHLAUCH GRAU/GRAU/ [12 STK.]

**47501010**



TUBE VITON/ ID=0.89/ L=180MM/ 2 COLOR CODE STOPPER PUMP TUBE ORANGE/ORANGE/ [12 PCS.]

SCHLAUCH VITON/ ID=0,89/ L=180MM/ 2FACH FARBCODE STOPPER PUMPENSCHLAUCH ORANGE/ORANGE/ [12 STK.]

**47501002**

### Housing

Photo  
Foto

Description  
Bezeichnung



SLIDER DOOR GUIDE

GLEITER TÜRFÜHRUNG

**47050306**



CABINET OPTIC ISOLATION BACKSIDE COMPLETE SPECTROBLUE

ISOLIERUNG OPTIK HINTEN KPL. SPECTROBLUE

**50620001**



## SPECTROBLUE · FME16/26



CABINET OPTIC ISOLATION FRONTSIDE COMPLETE SPECTROBLUE  
ISOLIERUNG OPTIK VORNE KPL. SPECTROBLUE

**50620002**



ANALYSIS AREA SPECTROBLUE COMPLETE  
ANALYSENRAUM KPL. SPECTROBLUE

**50620004**



DOOR INSIDE SPECTROBLUE COMPLETE  
TUER INNEN SPECTROBLUE KPL.

**50620005**



DOOR OUTSIDE SPECTROBLUE COMPLETE  
TUER AUSSEN SPECTROBLUE KPL.

**50620003**

### Miscellaneous

Photo  
Foto

Description  
Bezeichnung



RING TENSION PNEURO DN 20-25 KF A  
SPANNRING-PNEURO-AL FÜR VACUUMSCHLAUCH

**44102005**



UNION JOINT BULKHEAD/ FOR HOSE ID2.3/ TYPE=LUER/ FOR PANEL  
INSTALLATION D6MM/ [5 PCS.]

VERSCHRAUBUNG SCHOTT/ FÜR SCHLAUCH ID2,3/ TYP=LUER/ FÜR  
SCHALTAFELMONTAGE AUSBRUCH D6MM/ [5 STK.]

**44702040**

## SPECTROBLUE · FME16/26

---



UNION NUT/ 1/4-26 UNF 2B/ [10 PCS.]  
MUTTER SICHERUNG 1/4-26 UNF 2B/ [10 STK.]

**44702059**

---



CONNECTOR LUER-FITTING ID2.3/MALE [5 PCS.]  
VERBINDER LUER-VERSCHRAUB. ID2,3/STECKER [5 STK.]

**44702053**

---



CONNECTOR LUER-M ID=2,3 [5 PCS.]  
STECKER LUER-M ID=2,3 [5 STK.]

**44702041**

---



EMC CONNECTOR PLATE PERISTALTIC PUMP FMX  
EMV VERBINDUNGSBLECH PERISTALTISCHE PUMPE FMX

**46303015**

---



TANK WASTE WATER/ 10L/ WITH SWITCH  
BEHÄLTER ABWASSER/ 10L/ MIT SCHALTER

**75000502**

---



OPTION OXYGENE  
OPTION SAUERSTOFF

**73004039**

---



OPTICAL FIBER CONTROL 1,7M ASSEMBLY PLUG BLUE+GREY WITHOUT MARKING  
LICHTLEITER STEUER 1,7M ASSEMBLY STECKER BLAU+GRAU OHNE MARKIERUNG

**75090023**

---

## SPECTROBLUE · FME16/26

---



TOOL, SCREWDRIVER FOR LENSE ATTACHMENT ICP EOP  
SCHRAUBWERKZEUG LINSENKLEMMUNG ICP EOP

**75160521**

---



EXTERNAL TRIGGER INTERFACE/ DIGITAL AND ANALOG  
EXTERNAL TRIGGER INTERFACE/ DIGITAL UND ANALOG

**77090037E**

---



SCREW DRIVER FLAT HEADED SHORT VERSION  
SCHRAUBENDREHER SCHLITZ B6,5 KURZ

**80009153**

---



SCREW CAP/ FOR WIDE-MOUTH TANK/ CLOSED  
DECKEL/ FÜR KANISTER WEITHALS/ GESCHLOSSEN

**80012043**

---



OPTIC-PAPER DRY/ [5X30 SHEETS]  
OPTIKPAPIER TROCKEN/ [5X30 BLATT]

**80000017**

---



VACUUM GREASE KRYTOX GPL224  
VAKUUMFETT KRYTOX GPL224 1/2 OZ TUBE

**80005026**

---



BOTTLE WIDE-NECKEND WITH SCREW CAP  
FLASCHE WEITHALS 0,5LITER PE MIT SCHRAUBVERSCHLUSS

**80012015**

---

## SPECTROBLUE · FME16/26



WRENCH, ALLEN, 5MM WITH HANDLE L350mm

SCHRAUBENDREHER INNENSECHSKANT 5MM / ABTRIEB 5MM / LÄNGE 350MM / MIT T-GRIFF

**80009162**



ECCENTRIC RING 25MM/AL INCL. SEAL KF25/AL NEOPREN

ZENTRIERRING 25MM/AL INKL. DICHTUNG KF25/AL NEOPREN

**44102003**

### Accessories

Photo  
Foto

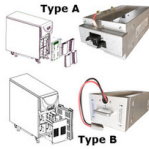
Description  
Bezeichnung



O-RING FOR CAPRICORN OR ELEGRA CAP/ [3 PCS.]

O-RING FÜR CAPRICORN ODER ELEGRA DECKEL/ [3 STK.]

**47010007**



BATTERY KIT FOR UPS SECURITY PLUS(II)/ 77020133+77020141/ 4 RACKS

AKKUSATZ FÜR USV SECURITY PLUS (II)/ 77020133+77020141/ 4 EINSCHÜBE

**69001007**



PARTS SET PARTICLE FILTER AR-LINE

TEILESATZ PARTIKELFILTER AR-ZULEITUNG

**71000845**



ARGON HUMIDIFIER TWO-CHANNEL ELEGRA CPL.

BEFEUCHTER ARGON ZWEIKANAL ELEGRA KPL.

**75460543**

## SPECTROBLUE · FME16/26

---



HOLDER ARGON HUMIDIFIER

HALTER ARGONBEFEUCHTER

**75560504**

---



AUTOSAMPLER OILS-7400/ 60 POSITION RACK

PROBENGEBER OILS-7400/ 60 POSITIONEN RACK

**77060517**

---



UNINTERRUPTIBLE POWER SUPPLY 6000VA/ 208-240/104-240VAC/ 50/60HZ/

UNTERBRECHUNGSFREIE SPANNUNGSVERSORGUNG/ 6000VA/ 208-240/104-240VAC/ 50/60HZ/

**77020141**

---



ASXPRESS - AQUEOUS VERSION FOR ASX

ASXPRESS - AQUEOUS VERSION FÜR ASX

**77060509**

---



ASXPRESS - OIL VERSION FOR ASX

ASXPRESS - ÖL VERSION FÜR ASX

**77060508**

---



BENCH FOR ASSESSORIES/ D900/ W750/ H743MM/ MOVEABLE

TISCH FÜR ZUBEHÖR/ L900/ B750/ H743MM/ FAHRBAR

**78000002**

---

## SPECTROBLUE · FME16/26

---



EXHAUST HELIOS SB250C 230VAC/255W WITHOUT SPEED CONTROLLER

ABSAUGUNG HELIOS SB250C 230VAC/255W ANSCHLUß 250 MM OHNE DREHZAHLSSTELLER

**77060102**

---



EXTERNAL TRIGGER INTERFACE NI USB-6501 INCL. SOFTWARE SMART EXTERNAL TRIGGER

EXTERNAL TRIGGER INTERFACE NI USB-6501 INCL. SOFTWARE SMART EXTERNAL TRIGGER

**77090036E**

---



BENCH FOR ARCOS/ D1500/ W750/ H743MM/ NOT MOVEABLE

TISCH FÜR ARCOS/ L1500/ B750/ H743MM/ NICHT FAHRBAR

**78000003**

---

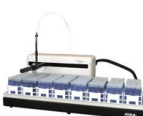


SPEED CONTROLLER FOR HELIOS SB 250C

DREHZAHLSSTELLER FÜR HELIOS SB 250C

**77040192**

---



AUTOSAMPLER XLR-8-60

PROBENGEBER XLR-8-60

**78280114**

---



AUTOSAMPLER ASX-280/ W/O PUMP

PROBENGEBER ASX-280/ OHNE PUMPE

**78280096**

---

## SPECTROBLUE · FME16/26

---



ASX-560 AUTOSAMPLER WITH INTEGRATED PERISTALTIC PUMP  
ASX-560 AUTOSAMPLER MIT INTEGRIERTER PERISTALTISCHER PUMPE

**78280115**

---



AUTOSAMPLER ASX-560/ W/O PUMP  
PROBENGEBER ASX-560/ OHNE PUMPE

**78280095**

---



ASX-280 AUTOSAMPLER WITH INTEGRATED PERISTALTIC PUMP  
ASX-280 AUTOSAMPLER MIT INTEGRIERTER PERISTALTISCHER PUMPE

**78280116**

---



ULTRA SONIC NEBULIZER USN-5000AT+/ 100-120VAC/ 50-60HZ/ 520W  
ULTRASCHALLZERSTÄUBER USN-5000AT+/ 100-120VAC/ 50-60HZ/ 520W

**78997023**

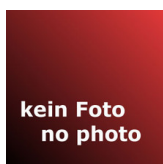
---



ULTRA SONIC NEBULIZER USN-5000AT+/ 220-240VAC/ 50-60HZ/ 520W  
ULTRASCHALLZERSTÄUBER U-5000AT+/ 220-240VAC/ 50-60HZ/ 520W

**78997024**

---



CD SMART USER INTERFACE  
CD SMART USER INTERFACE

**80111457**

---



SOFTWARE SMARTANALYZER VISION DEVELOPER FOR SPECTROBLUE  
SOFTWARE SMARTANALYZER VISION DEVELOPER FÜR SPECTROBLUE

**80111463**

---

## SPECTROBLUE · FME16/26

---

### Remainder-on-stock

---

Photo  
Foto

Description  
Bezeichnung

---



CABLESET OPTIC / FMX26 + FMX36  
KABELSATZ OPTIK / FMX26 + FMX36

**75071421**

---