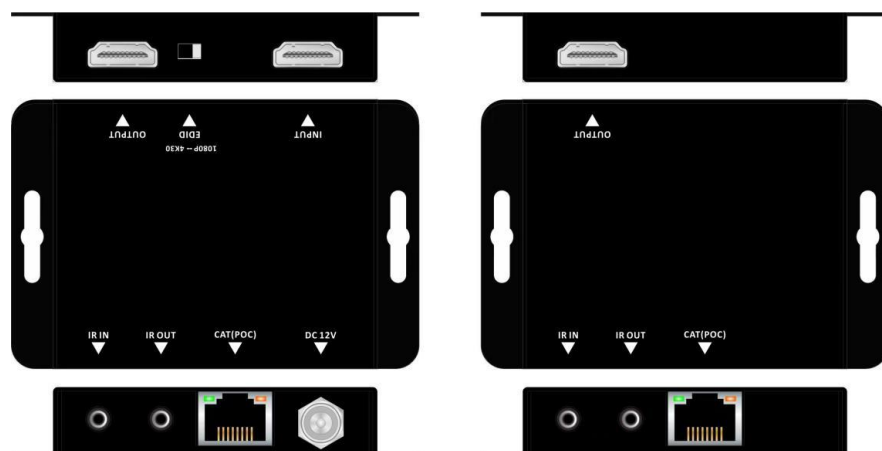


INSTRUCTION MANUAL

HDTV Supply, Inc
Los Angeles, CA



WolfPack 4K 30 HDMI Extender to 120 Feet via CAT6 with Bi-directional IR, EDID, POC & HDMI Loopout

Part Number: HDTV-GHDT-70TR

Before using the product, please carefully read
the manual and safekeep it.



*24-Year Global Home
For Audio & Video Products*

SAFETY REMINDERS

To protect the device and operating personnel from electrostatic discharge, ensure that the device is properly grounded before powering it on. Please observe the following guidelines when installing, using, or maintaining this equipment.



Keep the apparatus away from moisture and liquids to prevent damage.



Clean the apparatus using only a dry cloth.



Ensure proper ventilation and avoid placing the unit in confined spaces.



Disconnect from power during storms or prolonged periods of non-use.



Do not obstruct ventilation openings to prevent overheating and potential hazards.



Prevent the power cord from being damaged by pressure or excessive bending.



Keep the unit away from heat sources to maintain safe operation.



Use only manufacturer-approved accessories.



Avoid placing open flames near or on the unit.



Seek professional servicing when required.



24-Year Global Home
For Audio & Video Products

TABLE OF CONTENTS

CONTENTS

Table of Contents

Safety Reminder.....	1
Table of Contents	2
Notices	3
Product Overview	4
Introduction.....	5
Specification.....	6
Application	8
Connection Diagram	10
Aftersales	11

FORWARD

- Thank you for choosing our product. We appreciate your support. For your safety and to ensure proper operation of the equipment, please read this manual carefully before use.
- Please safeguard the product's warranty label. The label affixed to the unit serves as proof of warranty and must be preserved.
- This manual is intended for operational guidance only and does not cover maintenance or repair services. Any future changes to features or specifications will be noted in updated documentation.
- Refer to this manual first if you encounter any questions while using the product. It provides detailed instructions for operation and should be followed closely. If you require further assistance, please contact our support team—we're committed to providing you with prompt and helpful service.
- **Note:** This manual is subject to change without prior notice.

DISCLAIMERS

The information in this manual has been thoroughly reviewed and is believed to be accurate. However, we are not responsible for any patent infringements or third-party rights violations that may arise from its use.

We do not accept liability for any inaccuracies in this document, nor do we guarantee updates or the continued accuracy of the information provided.

We reserve the right to make changes or improvements to this document and/or product at any time without prior notice.

COPYRIGHT NOTICE

No part of this document may be copied, distributed, stored, or translated into any language or format—whether electronic, mechanical, optical, or otherwise—without prior written permission.

© Copyright 2020. All rights reserved. Version 1.0 | February 2025

TRADEMARK ACKNOWLEDGMENTS

All products or service names mentioned in this document may be trademarks of the companies with which they are associated.



24-Year Global Home
For Audio & Video Products

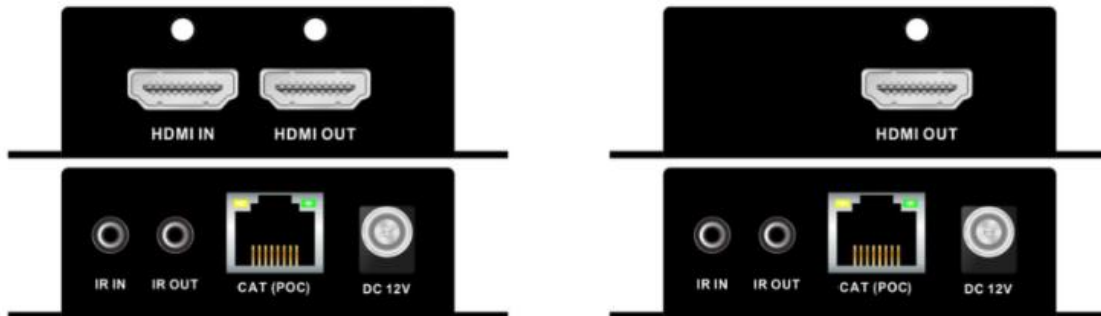
NOTICES

Important Safety and Installation Guidelines

To ensure reliable operation and the safety of personnel, please carefully observe the following instructions during installation, use, and maintenance of this equipment:

- Do not use the product in hazardous environments, such as areas with dust, oil smoke, conductive particles, corrosive or flammable gases, excessive heat, moisture, rain, wind, vibration, or impact. Exposure to these conditions may lead to electric shock, fire, or equipment malfunction.
- Keep the ventilation areas clear of any foreign objects or packaging materials (e.g., contact paper). Obstructed airflow may cause overheating, fire hazards, or malfunction.
- Avoid handling cables (connecting, unplugging, or rewiring) while the equipment is powered on. This may cause electric shock or damage the circuitry.
- Ensure all installation and wiring connections are secure and reliable. Loose connections may lead to faulty operation.
- In high-interference environments, use shielded cables for all high-frequency signal input/output connections to maintain proper system performance. Only perform installation or wiring after the external power supply is completely shut off to prevent electric shock or damage.
- Proper grounding is essential. This device must be grounded using the power line's grounding conductor. Ensure grounding is complete before connecting any input or output terminals to avoid the risk of electric shock.
- Do not touch terminals while the device is powered, as this may cause electric shock or unintended operation.
- Do not clean or service the equipment (e.g., tightening terminals) while it is powered on. Doing so may result in electric shock.
- Do not connect or disconnect communication cables, expansion modules, or control unit cables while the power is on. This may lead to equipment damage or malfunction.
- Do not disassemble the equipment, as internal components may be damaged.
- Thoroughly read this manual before performing any changes, trial operations, maintenance, or shutdowns. For issues that cannot be resolved, please contact our support team for assistance.

INTRODUCTION



This GHDT HDMI Extender is a 4K30 ultra-high-definition extender with a single CAT6/CAT7 network cable for signal transmission, the maximum distance can reach 70 meters for 1080P60Hz, for the 4K30 can up to 40m.

It supports the HDMI 1.4 protocol and can handle a maximum resolution of 4K30Hz. It can support bidirectional infrared (IR) transmission (transmit and receive) functionality, enabling long-distance remote control signal transmission. It also supports remote POC (Power over Cable) power supply and features a transmitter loop-out function, allowing connection to up to two displays simultaneously. Moreover, it supports intelligent EDID management.

With a wide range of applications, this product can be used in multimedia conference rooms, multimedia classrooms, cinemas, and other scenarios.

FEATURES

- 4K 30 Hz HDMI Extender kit with compact design
- Distance can up to 70m for 1080P60, or 4K30 up to 40m
- Support HDMI1.4, HDCP1.4
- Support 1080P60 and 4K EDID switch
- Support bi-directional IR
- Support POC from TX to Rx
- Support HDMI loop out on Transmitter
- Built-in ESD protection



24-Year Global Home
For Audio & Video Products

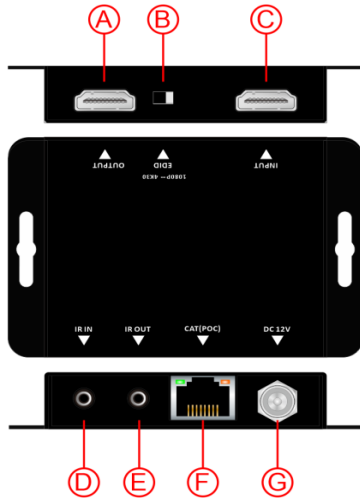
PRODUCT OVERVIEW

SPECIFICATION

Name	GHDT HDMI Transmitter	GHDT HDMI Receiver
Input	2XHDMI , 1XIR_RX	1XRJ45 , 1XIR_RX
Output	1XRJ45 , 1XIR_TX	1XHDMI , 1XIR_TX
Protocol	HDMI1.4, HDCP1.4, EDID Management	
Resolution	480i,576i,480p,576p,720p,1080i,1920x1080p60Hz , 3840x2160/30Hz,4096X2160/24Hz	
Color space	1080p: 36Bit Deep Color 4K: 24Bit True Color, 4:4:4	
Bandwidth	10Gbps	
Distance	CAT6: 1080p60Hz up to 70m, 4K30Hz up to 40m	
Product Dimension	88*58*15(mm)	
Weight	0.5kg	
Power	DC:12V 1500mA	
Consumption	≤6W	
Working Humidity	10%-90%	
Working Temper	0°C-50°C	

PANEL INTRODUCTION

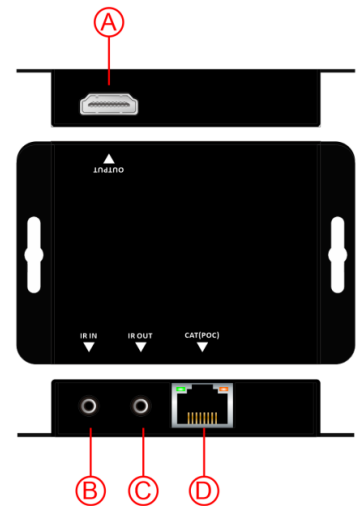
TRANSMITTER



No.	Interface	Description
A	HDMI OUTPUT	HDMI Loop out, up to 4K30Hz
B	EDID DIP	Built-in 4K30Hz and 1920*1080p60 EDID
C	HDMI INPUT	HDMI Input, up to 4K30Hz
D	IR IN	IR RX
E	IR OUT	IR TX
F	CAT(POC)	CAT6/7
G	DC 12V	DC12V 1.5A

RECEIVER

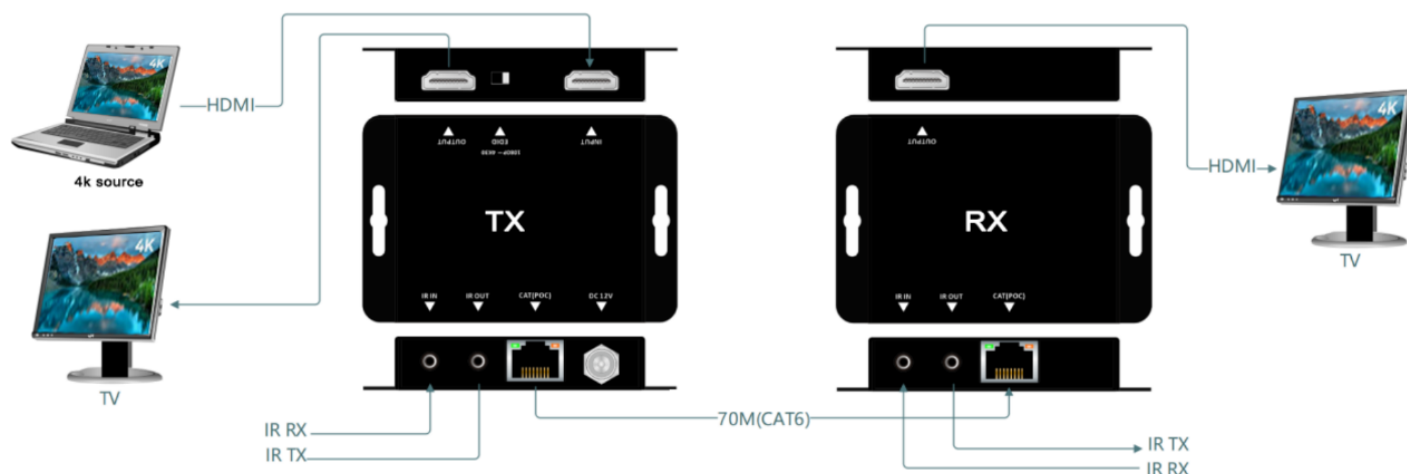
No.	Interface	Description
A	HDMI OUTPUT	HDMI Loop out, up to 4K 30 Hz
B	IR IN	IR RX
C	IR OUT	IR TX
D	CAT (POC)	CAT6/7



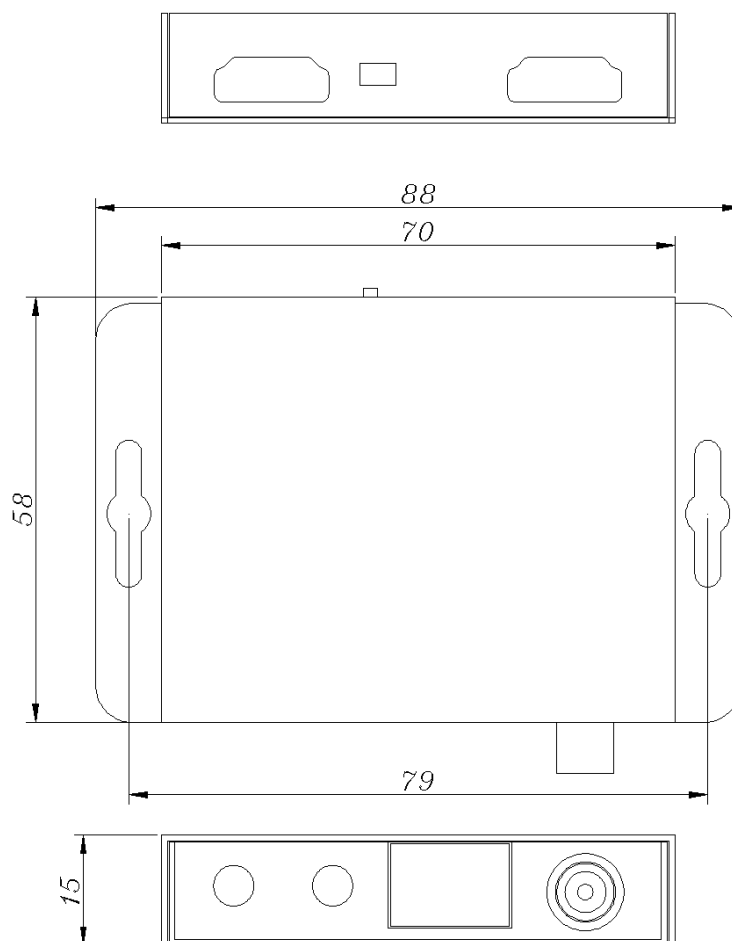
PACKAGING

Receiver	1	pcs
Transmitter	1	pcs
Power adapter(DC 12V)	1	pcs

CONNECTION DIAGRAM



DIMENSION (mm)



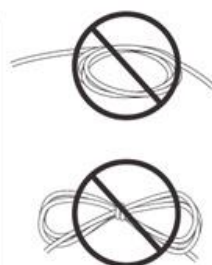
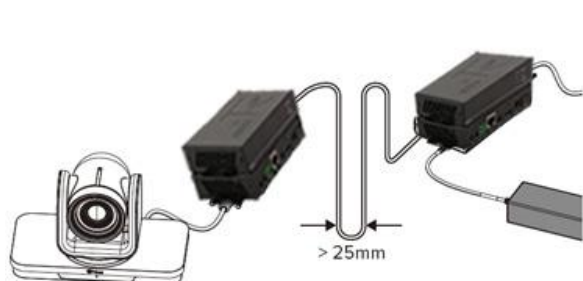
RJ-45 CONNECTOR

Suggest to use twisted shield pair 24AWG cable, the bandwidth at least 400MHz, and crystal connector.



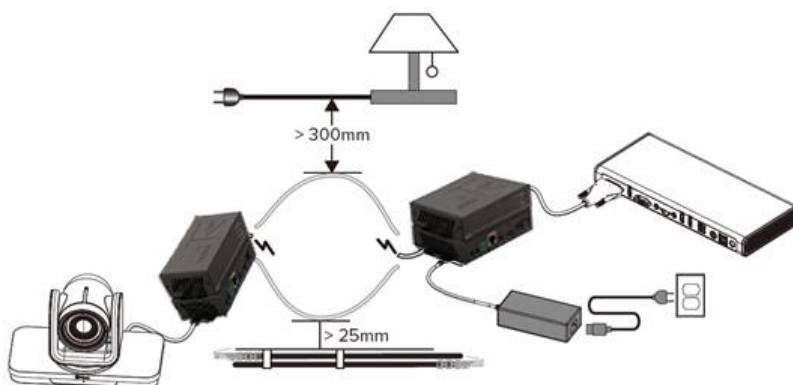
TIA/EIA-T568B	
Pin	Wire Color
1	White-orange
2	Orange
3	White-green
4	Blue
5	White-blue
6	Green
7	White-brown
8	Brown

RJ-45 CABLE USING REQUESTS



The gap between cables should above 25mm,
don't circle it knot

RJ-45 cable should away from high voltage cable,
at least above 300mm; Also, should be away
from line tube at least 25mm





24-Year Global Home
For Audio & Video Products

COMMON PROBLEM AND NOTICE

COMMON PROBLEM AND TROUBLESHOOTING

Please check below parts when the display showing no signal, audio, flicking, blue or black screen:

1. Check the connection of the RJ-45 cable, HD cable
2. Check the crystal connector and the RJ-45 cable is CAT5E/CAT6/CAT7
3. Check the source input are correct
4. Be aware of the status of the indicators and find out the problems

NOTICE

1. All the RJ-45 cable, power cord should have the protection cover when assembling,
2. better cover the cable to avoid out pressure to damage the cables
3. Please don't hang up stuff over the cables, don't step on the cables to avoid
4. short circuit and damage.
5. Please pay attention to using the properly plugging in ways to avoid cable and port damage.
6. Please avoid the liquid getting into the equipment to damage the product and short circuit.



INQUIRIES AND AFTERSALES SUPPORT



HDTV Supply, Inc

Inquiries and Aftersales Support

For any inquiries or assistance related to this product, including aftersales service, please contact our customer support team. We are committed to providing you with the highest level of service.

Contact Details:

- Phone: 833-WOLFPACK (833-965-3722)
- Email: customerservice@hdtvsupply.com | support@hdtvsupply.com
- Website: www.hdtvsupply.com

Our team is ready to assist with any questions or concerns you may have.