



USER MANUAL

WolfPack 4K 30 Hz 16x16 HDMI Matrix Switch with Apps & WEB GUI

Part Number: HDTVFIX1600E



Version: V24.09

Table of Contents

Connection Diagram	4
Packing.....	5
Panel description	5
① LCD screen: for the switching, EDID, IP etc information display.	5
② INPUT: 16 HDMI input buttons	5
③ OUTPUT: 16 HDMI output buttons	5
④ CONTROL:	5
UP: for upward controlling, or when press input and press UP to all outputs	5
EDID: Press it to enter EDID set mode.	5
SAVE: Press to save the switching status.	5
Down: for upward controlling.....	5
ENTER: Press to confirm to save the setting.	5
RECALL: Press it to recall the presets/scenes.....	5
⑤ IR: IR receiver for the IR remote control.....	5
Back panel.....	5
Matrix Switcher control	6
Remote Control	6
Channel switching:	6
Switch any inputs to all outputs:	7
APP control	7
WEB GUI browser Control (the below is based on the firmware version v3.2)	
11. Common Problem Shooting.....	12
After-Sales	13

Introduction

This is a new 1U fixed-height 4K2K HDMI matrix switcher featuring 16 HDMI input ports and 16 HDMI output ports, with OUT1 offering a 3.5mm audio output. It supports resolutions up to 4K 30Hz, and all ports are HDCP compliant. With user-friendly control options such as IR remote control, 2-press push buttons with blue backlighting, a web GUI, and iOS/Android app control, it also supports smart EDID management via the web interface. This matrix switcher is compatible with Blu-ray players, set-top boxes, home theater systems, game consoles, and other HDMI input sources for routing to HDMI displays. It is widely used in various audiovisual applications.

Features

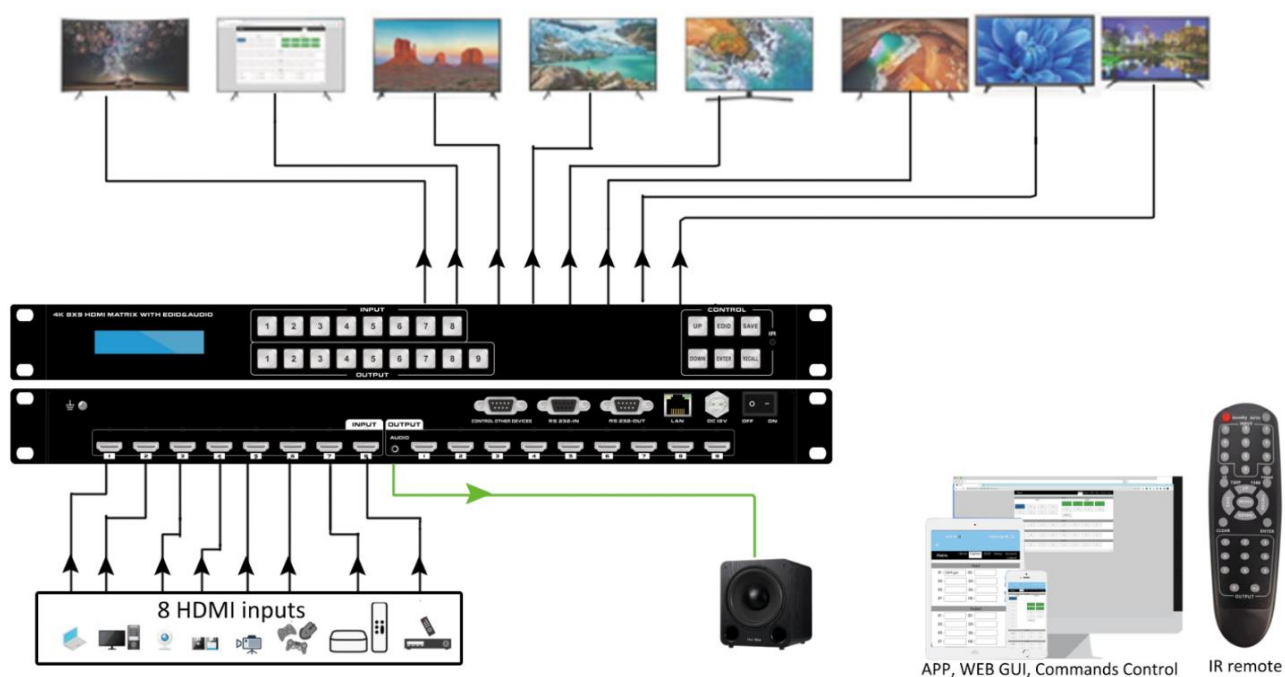
1. 16 HDMI inputs and 16 HDMI outputs, and OUT1 with 3.5mm audio out
2. Supports HDMI1.4, HDCP1.4
3. The resolution can up to 4K@30Hz
4. Deep Color support 48/36/30/24-bit
5. Supports LPCM 7.1CH, Dolby TrueHD, Dolby Digital and DTS-HD Master Audio
6. Supports IR remote control(IR remote control codes are available)
7. Supports smart EDID management, including 8-output EDID, 15 internal EDID.
8. Supports RS-232 and TCP/IP Control(WEB GUI and iOS/Android APP)
9. Supports 2-press push buttons control with blue lights
10. Supports to rename the inputs and outputs

Specification

Name	WolfPack 4K 30 Hz 16x16 HDMI Matrix Switch with Apps & WEB GUI
Resolution	480p, 576p, 720p, 1080i, 1080p@24/30/50/60Hz,
Input ports	16 * HDMI ports, 1* RS-232(control), 1 * RJ-45(control)

Output ports	16 * Female HDMI ports, 1*3.5mm audio, 1*
Transmission	10m/30ft for 4K30, 15m/45ft for 1080P@60Hz
ESD Protection	Human-body Model: $\pm 8\text{kV}$ (Air-gap discharge) $\pm 4\text{kV}$ (Air-gap discharge)
ESD Protection	12 V 5A DC (US/EU standards, CE/FCC/UL certified)
Controlling	Supports remote control, front buttons control, RS232,
Input voltage	AC: 100VAC \sim 260VAC, 50/60 Hz, DC:12V 5A
Dimension(mm)	480 * 252 * 44(mm)
Weight	3.5Kg
Operating	0 $^{\circ}\text{C}$ ~40 $^{\circ}\text{C}$ /32 $^{\circ}\text{F}$ ~104 $^{\circ}\text{F}$
Storage	-20 $^{\circ}\text{C}$ ~60 $^{\circ}\text{C}$ /-4 $^{\circ}\text{F}$ ~140 $^{\circ}\text{F}$

Connection Diagram



Packing

No.	Name	Qty	Unit
1	HDMI Matrix Switcher	1	Pcs.
2	DC 12V5A power adapter	1	Pcs
3	Remote Control	1	Pcs
4	Rack ear	2	Pcs

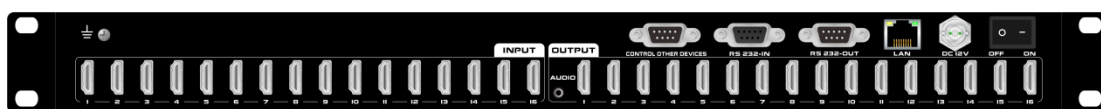
Panel description

Front panel



- ① **LCD screen:** for the switching, EDID, IP etc information display.
- ② **INPUT:** 16 HDMI input buttons
- ③ **OUTPUT:** 16 HDMI output buttons
- ④ **CONTROL:**
 - UP:** for upward controlling, or when press input and press UP to all outputs
 - EDID:** Press it to enter EDID set mode.
 - SAVE:** Press to save the switching status.
 - Down:**for upward controlling
 - ENTER:** Press to confirm to save the setting.
 - RECALL:** Press it to recall the presets/scenes.
- ⑤ **IR:** IR receiver for the IR remote control

Back panel



- ① For the ground wiring
- ② INPUT: 16 female HDMI Input ports
- ③ 3.5mm audio output from output 1
- ④ OUTPUT: 16 female HDMI output ports
- ⑤ Control other devices: from the WEB GUI setup to fill out the commands
- ⑥ RS232 IN: Female RS232 port for the RS232 control
- ⑦ RS232 OUT: Male RS232 port for the RS232 control loop
- ⑧ LAN: for the IP/TCP control, the default IP address is 192.168.1.80
- ⑨ DC12V: power supply port
- ⑩ ON/OFF: power off/on switch

Matrix Switcher control

This Matrix switcher can support IR remote, APP, RS232/TCP/IP software, WEB GUI browser or the front push-buttons control.

Remote Control

Users also can control this matrix switcher with the remote control. Note the below buttons are not functional on this product: Standby, Auto, 4K, 1080p, 720P, 1366

Channel switching:

Press the input from number "0~9", then press the output from number "0~9", can press the outputs continually.

Eg. Switch input 1 to output 1, 2, 3:

INPUT 1 → OUTPUT 1, 2, 3

Switch any inputs to all outputs:

Press input from number "0~9", then press "UP" or "ALL" button.

For the inputs/outputs are more than 9, can press 4K first, then press the numbers, such as input 11 will need to press 4K+1.

SAVE: For the preset save. "SAVE" → select from the INPUT buttons(1~8)

OUTPUT buttons (1~9) → "ENTER", will hear a beep sound.

RECALL: for the saved presets recalling. "RECALL"

→ select from the INPUT buttons(1~8)

OUTPUT buttons (1~9) → "ENTER", will hear a beep sound.

MENU: for back to homepage/status

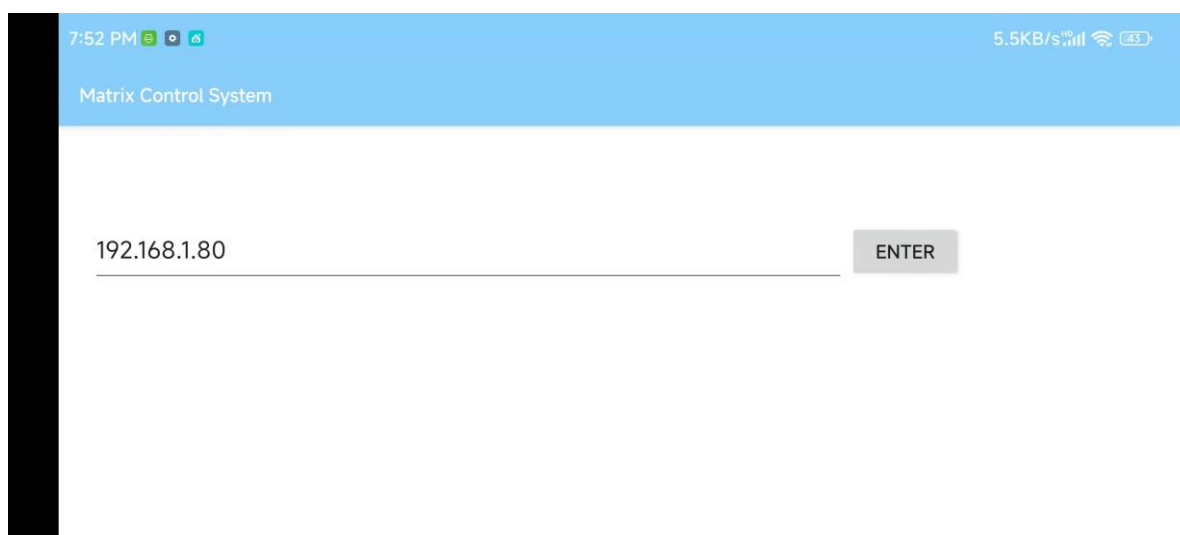
CLEAR: to disconnect the selected input to the outputs

ENTER: to confirm the switching, scenes save & recall

**APP control**

Users can download the APP from the Google play or Apple store by searching keywords "MCS", then need to make sure the Matrix switcher is connected to the WIFI router and the mobile devices is connected to the same WIFI. The default IP address of the matrix switcher is 192.168.1.80.

Open the APP and Enter the IP address of the matrix switcher:

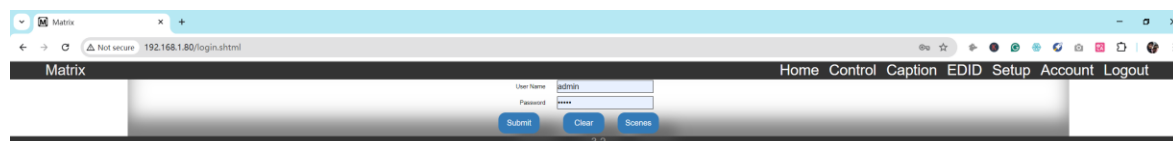


WEB GUI browser Control (the below is based on the firmware version v3.2)

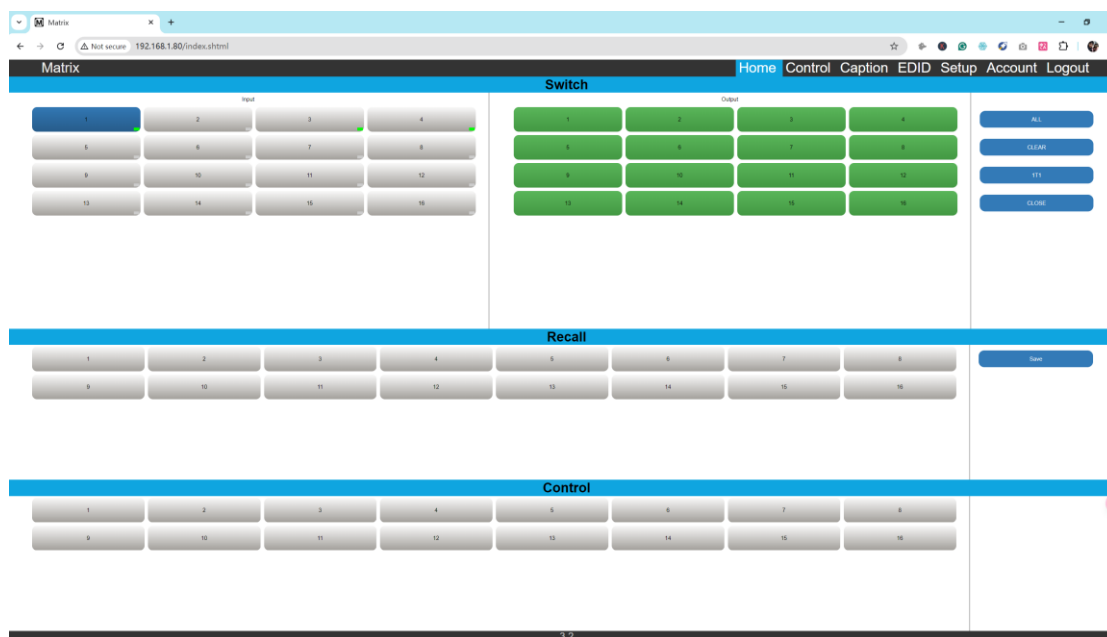
Users also can use the WEB browser to control the matrix switcher, users can have the matrix switcher connected with the PC with the LAN cable directly or have the matrix switcher connected the same network switch. The default IP address of the matrix switcher is 192.168.1.80.

After opening the browser, users can type the matrix switcher IP address and press enter:

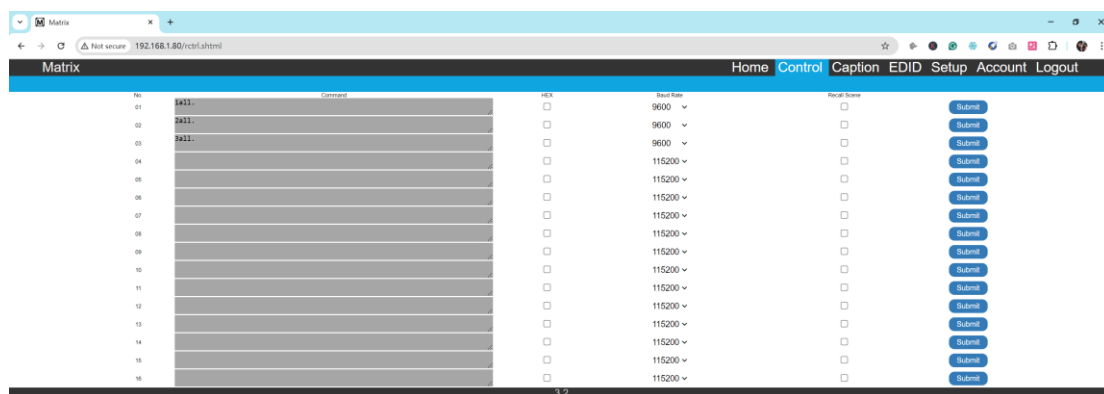
The default user name is admin and the password is admin.



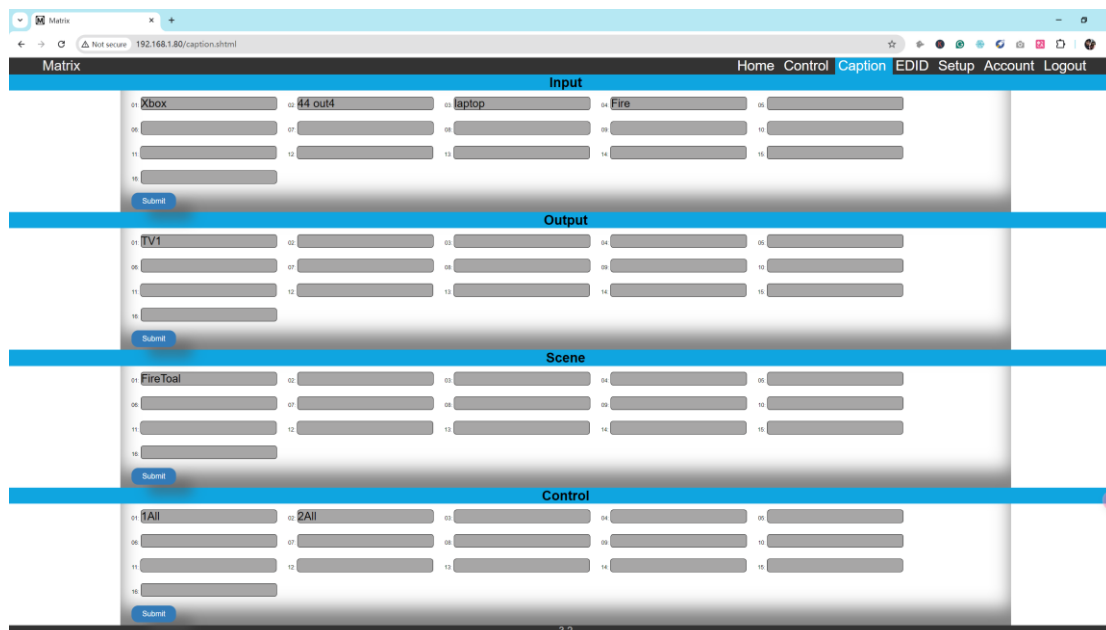
After login, it will turn to "Home" interface, users can do the sources switching, scenes recall, save and the other devices control here.



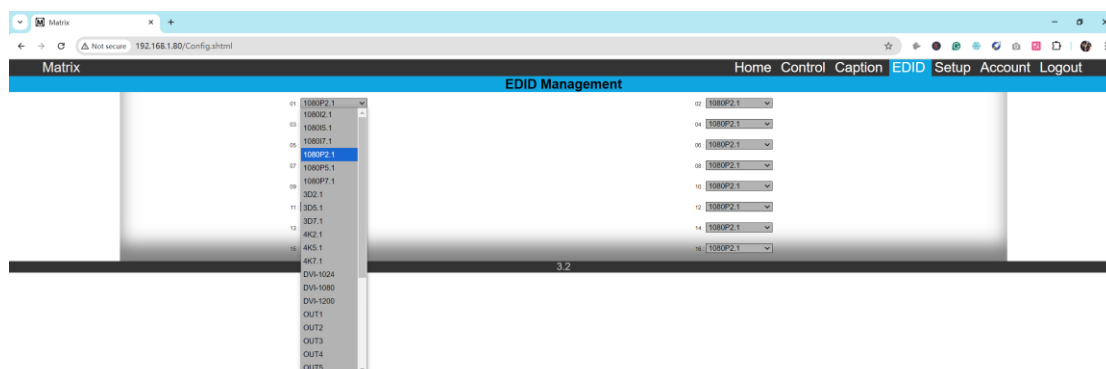
Control tab is to configure the RS232 commands to control other devices:



Caption tab is from users to change then input, output, scene and control names:
Users can change input, output and Scenes names here, up to 8 characters.



EDID setting tab for users to select or setup the EDID for the specific inputs

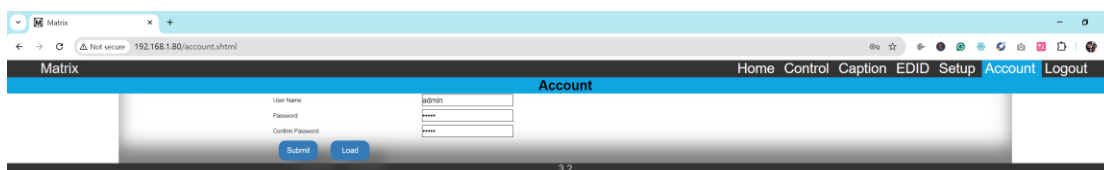


Setup interface for users to do the IP address, COM baud rate and buzzer settings:



*WEB upgrade is for getting into the system upgrade page.

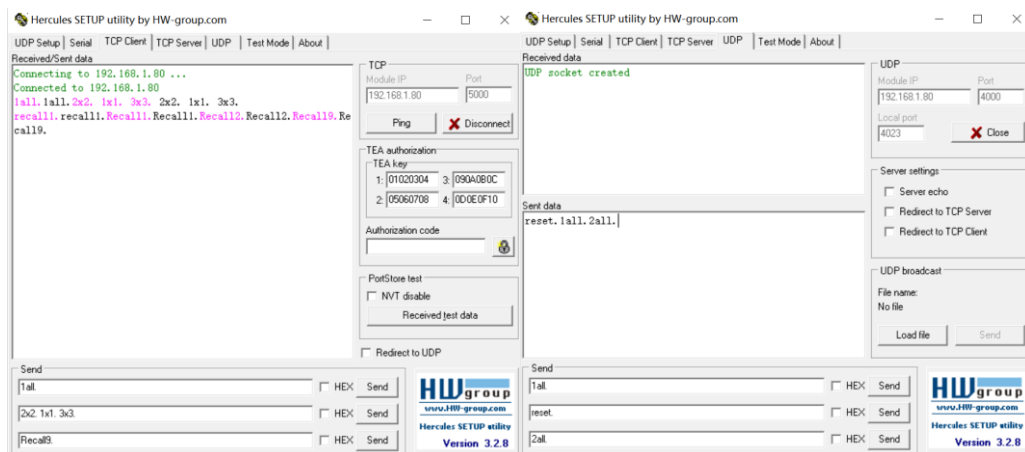
Account interface for users to change the login user name and password:



The 3rd Party Control Command

IP address: 192.168.1.80 (default IP)

Protocol: TCP(5000), UDP(4000)



RS232

Baud rate: 9600, N, 8, 1

Use RS232 direct cable

Commands	Functional description	Example
Yall.	Switch input Y to all outputs	Switch 1 to all outputs: 1all.
YxY.	Switch input Y to output Y	Switch input 2 to output 9: 2x9.
YxY.YxY.YxY.	Switch input Y to output Ys	Switch input 3 to output 2, 3, 4: 3x2.3x3.3x4.

SaveY.	Save to scene Y	Save to scene2: Save2.
Recall[y].	Recall the save scene Y	Recall to the scene 10: Recall10.
Reset.	To reset account to admin/admin, IP address to default 192.168.1.80	

11. Common Problem Shooting

Q: Serial port operation is out of order, can not control to switch?

A: The serial port is damaged or not started

Solution: Make sure the port uses direct serial port line, check the connection of PC software serial port.

Power failure: Check the power fuses and connecting lines;

Signal interference: Make sure the cables and plugs are connected well, the cables meet the requirements, the system is ground connected well, the AC power between devices have the same grounding system;

Accidental damage: Sent back to the manufacturer for recondition.

After-Sales

9.1 Warranty Information

The Company warrants that the process and materials of the product are not defective under normal use and service for 2 (2) years following the date of purchase from the Company or its authorized distributors.

If the product does not work within the guaranteed warranty period, the company will choose and pay for the repair of the defective product or component, the delivery of the equivalent product or component to the user for replacement of the defective item, or refund the payment which users have made.

The replaced product will become the property of the Company.

The replacement product could be new or repaired.

Whichever is longer, any replacement or repaired of the product or component is for a period of ninety (90) days or the remaining period of the initial warranty. The Company shall not be responsible for any software, firmware, information, or memory data contained in, stored in, or integrated with the product repaired by the customer's return, whether or not during the warranty period.

9.2 Warranty limitations and exceptions

Except above limited warranty, if the product is damaged by over usage, incorrectly use, ignore, accident, unusual physical pressure or voltage, unauthorized modification, alteration or services rendered by someone other than the Company or its authorized agent, the company will not have to bear additional obligations. Except using the product properly in the proper application or normal usage.



HDTV Supply, Inc

Inquiries and Aftersales Support

For any inquiries or assistance related to this product, including aftersales service, please contact our customer support team. We are committed to providing you with the highest level of service.

Contact Details:

- Phone: 833-WOLFPACK (833-965-3722)
- Email: customerservice@hdtvsupply.com | support@hdtvsupply.com
- Website: www.hdtvsupply.com

Our team is ready to assist with any questions or concerns you may have.