



**FALLTECH®**

# DROPPED OBJECT PREVENTION

**FT FOR TOOLS**

# DROPPED OBJECT PREVENTION

FT for Tools™ enables you to prevent dropped object related injuries. It is a complete system that offers multiple component options to create a dropped object prevention solution to fit your tools and your work applications while enabling you to work efficiently and safely.

## Tool Attachments

### Tape Measure

Tape Measure Holder attachment fits most large sized tape measures. Provides belt clip for convenience and D-ring for secure attachment. Also has belt loop for dual function as holster when no drop hazards exist.



Item #	Tape Measure Attachments	Pack Qty.	Max Tool Wt.
5400A1	Tape Measure Holder	1	2 lbs.



## Tool Attachments

### Battery Boot

Battery Boot attachment fits most cordless power tool batteries, including low profile and high capacity designs. Provides D-ring for secure attachment.



Item #	Battery Boot Attachments	Pack Qty.	Max Tool Wt.
5401A1	Battery Boot	1	6 lbs.

## Tool Attachments

### Adhesive

Adhesive Tool Attachment uses industrial grade adhesive pad to secure tools. For use with choke-on wire loop tool attachments.



Item #	Adhesive Attachments	Pack Qty.	Max Tool Wt.
5402A10	Adhesive Tool Attachment	10	2 lbs.

# DROPPED OBJECT PREVENTION

FT for Tools™ enables you to prevent dropped object related injuries. It is a complete system that offers multiple component options to create a dropped object prevention solution to fit your tools and your work applications while enabling you to work efficiently and safely.

## Tool Attachments

### Cold Shrink

Cold Shrink tool attachments require no heat or additional tools to apply. For use with choke-on tool attachments.



5410A5

5411A5

5412A5

Item #	Adhesive Attachments	Pack Qty.	Max Tool Wt.
5410A5	Cold Shrink, Small	5	5 lbs.
5411A5	Cold Shrink, Medium	5	10 lbs.
5412A5	Cold Shrink, Large	5	15 lbs.



## Tool Attachments

### Shackle

Shackle tool attachments are designed for tools with existing captive eye connection points. Attach directly with tool tethers or use additional tool attachments.



5410A5

5410A5

5410A5

5410A5

Item #	Adhesive Attachments	Pack Qty.	Max Tool Wt.
5420A2	Shackle, 0.4" x 0.75"	2	15 lbs.
5421A2	Shackle, 0.5" x 1.0"	2	15 lbs.
5422A2	Shackle, 0.65" x 1.25"	2	15 lbs.
5423A2	Shackle, 0.8" x 1.5"	2	15 lbs.





# DROPPED OBJECT PREVENTION

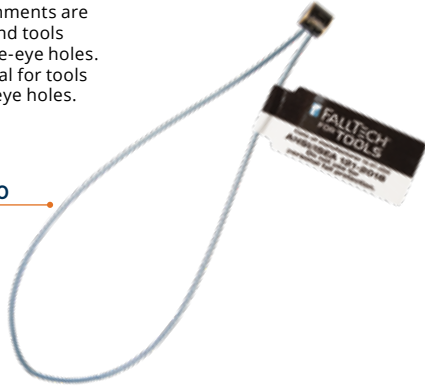
FT for Tools™ are designed to help you hold on to your gear and prevent drop injuries to workers at lower levels. Utilized as a tool tethering system of compatible components, a typical assembly may contain a tool attachment, a tool tether, and in some cases a tool anchor. FT for Tools™ provides multiple component options in each of these product groups so you can create tethering solutions to fit your tools and your work applications.

## Tool Attachments

### Choke-on

Choke-on Loop attachments are for connections to hand tools having integral captive-eye holes. Wire rope options ideal for tools with smaller captive-eye holes.

5317A10



Item #	Choke-on Loop Attachments	Pack Qty.	Max Tool Wt.
5317A10	5½" Choke-on Wire Loop	10	2 lbs.
5317A25	5½" Choke-on Wire Loop	25	2 lbs.

## Tool Attachments

### Swage-lock

Swage-lock Loop attachments are for connections to hand tools having integral captive-eye holes. Wire rope options ideal for tools with smaller captive-eye holes.

5314A10



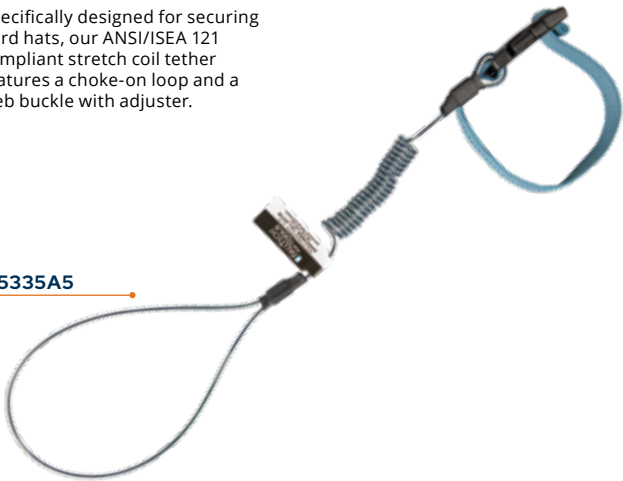
Item #	Swage-lock Attachments	Pack Qty.	Max Tool Wt.
5314A10	2" Swage-lock Wire Loop	10	3 lbs.
5314A25	2" Swage-lock Wire Loop	25	3 lbs.

## Hard Hat Tethers

### Stretch-coil with Web

Specifically designed for securing hard hats, our ANSI/ISEA 121 compliant stretch coil tether features a choke-on loop and a web buckle with adjuster.

5335A5



Item #	Hard Hat Tethers	Pack Qty.	Max Wt.
5335A5	ANSI Stretch-coil with Web, Cinch-loop /Web and Adjuster 18"	5	2 lbs.
5335A25	ANSI Stretch-coil with Web, Cinch-loop/Web and Adjuster 18"	25	2 lbs.

## Tool Tethers

### Non-Stretch

FallTech® Non-Stretch Web Tool Tethers are designed for securing larger jobsite tools weighing up to 40 lbs. to an appropriately rated anchorage. Options are available with dual swivel aluminum carabiners or choke-loop with swivel aluminum carabiner.

5340A



5340B

Item #	Non-Stretch Tool Tethers	Pack Qty.	Max Tool Wt.
5340A	Non-stretch, Swivel Aluminum Carabiners, 78"	1	40 lbs.
5340B	Non-stretch, Choke-loop with Swivel Aluminum Carabiner, 78"	1	40 lbs.

# DROPPED OBJECT PREVENTION

FallTech® Premium Tool Tethers include essential features such as swiveling carabiners to prevent tethers from twisting and binding. They are a critical link for safely connecting users and their tools. Available in preferred configurations and constructed with durable, yet smaller diameter woven elastic web, they suit most applications up to 15 lb. maximum tool weight. Options feature choke-on loops paired with swivel aluminum carabiners. Other choices include dual-swivel carabiner models.

## Premium Tool Tethers

## Stretch-web

5043A1

5065A1

5044A1

5066A1

5061A1

Item #	Stretch-web Premium Tool Tethers	Pack Qty.	Max Tool Wt.
5043A1	Premium Tool Tether with Dual Swivel Aluminum Carabiners, 36"	1	5 lbs.
5065A1	Premium Tool Tether, Choke-on Web-loop with Swivel Aluminum Carabiner, 36"	1	5 lbs.
5044A1	Premium Tool Tether with Dual Swivel Aluminum Carabiners, 36"	1	15 lbs.
5066A1	Premium Tool Tether, Choke-on Web-loop with Swivel Aluminum Carabiner, 36"	1	15 lbs.
5061A1	Premium Tool Tether, Choke-on Cinch-loop with Swivel Aluminum Carabiner, 36"	1	15 lbs.

# DROPPED OBJECT PREVENTION

FT for Tools™ helps you work safely and efficiently with your gear and while preventing drop injuries to workers at lower levels. FallTech Premium Tool Tethers include stretch coil, so they remain close to you and avoid snagging. They feature dual swivel aluminum carabiners and accommodate most uses up to 5 lb. maximum tool weight. Stretch-coil tethers measure 10" fully retracted and can expand to 36" in length as needed.

## Premium Tool Tethers

## Stretch-coil



Item #	Stretch-coil Tool Tethers	Pack Qty.	Max Tool Wt.
5215A1	Stretch-coil with Dual Swivel Aluminum Carabiners	1	5 lbs.
5215A5	Stretch-coil with Dual Swivel Aluminum Carabiners	5	5 lbs.
5212A1	Stretch-coil with Dual Swivel Aluminum Carabiners	1	2 lbs.
5212A5	Stretch-coil with Dual Swivel Aluminum Carabiners	5	2 lbs.

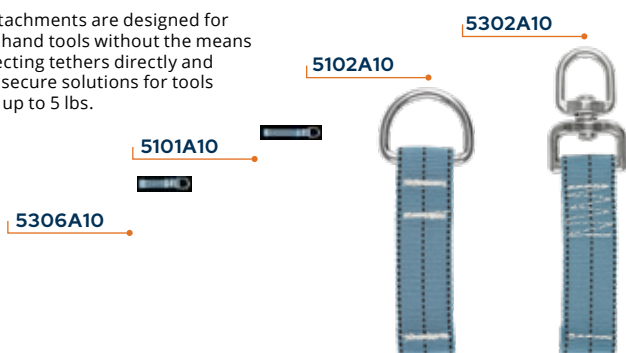
# DROPPED OBJECT PREVENTION

The FT for Tools™ system enables you to work productively with your tools while preventing drop tool injuries at lower levels. Functioning as a tool tethering system of compatible components, FT for Tools™ includes a tool attachment, a tool tether, and in some cases, a tool anchor. You can create a tethering solution to fit your specific tool and work application.

## Tool Attachments

### Tape-on

D-ring attachments are designed for common hand tools without the means for connecting tethers directly and to create secure solutions for tools weighing up to 5 lbs.



Item #	Tape-on Attachments	Pack Qty.	Max Tool Wt.
5306A10	D-ring, 1/2" x 2 1/2"	10	2 lbs.
5101A10	D-ring, 1/2" x 3 1/2"	10	2 lbs.
5102A10	D-ring, 1" x 3 1/2"	10	5 lbs.
5302A10	Swivel D-ring, 1" x 3 1/2"	10	5 lbs.

## Premium Tool Tape

### No-heat

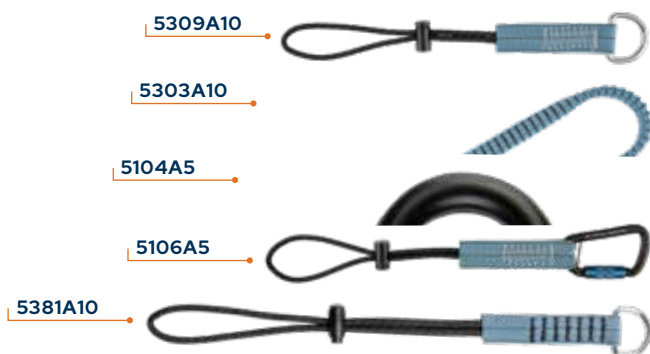
No-heat tool tape is used to secure D-ring attachments to tools up to 5 lbs.; for use with tool tethers and wrist anchors and available in 12' rolls.



Item #	No-heat Tool Tape	Pack Qty.	Max Tool Wt.
5307B1	12' x 1" Premium Tool Tape	1	5 lbs.
5307B10	12' x 1" Premium Tool Tape	10	5 lbs.

## Tool Attachments

### Choke-on



Item #	Choke-on Loop Attachments	Pack Qty.	Max Tool Wt.
5309A10	Standard D-ring, 11"	10	5 lbs.
5303A10	Swivel D-ring, 11"	10	5 lbs.
5104A5	Steel Carabiner, 11"	5	5 lbs.
5106A5	Aluminum Carabiner, 11"	5	5 lbs.
5318A10	Standard D-ring, 11"	10	15 lbs.

## Tool Attachments

### Choke / Tape-on

For larger and heavier hand and power tools with problematic handle sizes, our loop-end attachments utilize combined choke-on and tape-on fastening for tools weighing up to 35 lbs. Tool tape sold separately.



Item #	Choke-on Loop Attachments	Pack Qty.	Max Tool Wt.
5310A1	Loop-end 13" with support arm	1	35 lbs.
5310A5	Loop-end 13" with support arm	5	35 lbs.

# DROPPED OBJECT PREVENTION

FT for Tools™ will help you work safely and efficiently with your gear and while preventing drop injuries to workers at lower levels. A typical assembly may contain a tool attachment, a tool tether, and, in some cases, a tool anchor. You can create tethering solutions to fit your specific tool and work application.

## Hard Hat Tethers

### Stretch Coil / Stretch Web

Specifically designed for securing hard hats, two user-preferred options are available to protect against the drop. Our stretch coil tether features a choke-on loop and snap-clip combination and the stretch web version includes an adjuster paired with a snap-buckle.

5329A5

5330A5

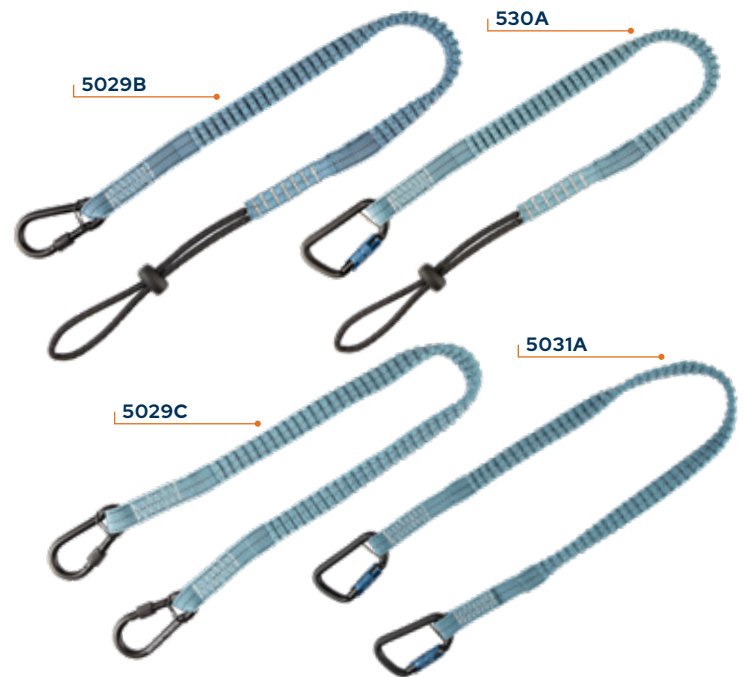
Item #	Hard Hat Tethers	Pack Qty.	Max Tool Wt.
5329A5	Stretch coil 18" Cinch-loop/Snap-clip	5	2 lbs.
5329A25	Stretch coil 18" Cinch-loop/Snap-clip	25	2 lbs.
5330A5	Stretch Web 25" Adjuster/Snap-buckle	5	2 lbs.
5330A25	Stretch Web 25" Adjuster/Snap-buckle	25	2 lbs.

## Tool Tethers

### Stretch Web

FallTech® Tool Tethers are the critical link for safely connecting users and their tools and are available in preferred configurations to suit most applications up to 15 lb. max. tool weight. All are constructed with woven elastic web and feature either choke-on loops paired with steel screwgate or aluminum twist-lock carabiner options or for added functionality, tethers are also available in dual-carabiner models.

Item #	Stretch-web Tool Tethers	Pack Qty.	Max Tool Wt.
5029B	Choke-on Loop, Steel Carabiner	1	15 lbs.
5029B10	Choke-on Loop, Steel Carabiner	10	15 lbs.
5030A	Choke-on Loop, Aluminum Carabiner	1	15 lbs.
5030A10	Choke-on Loop, Aluminum Carabiner	10	15 lbs.
5029C	Dual Steel Carabiners	1	15 lbs.
5031A	Dual Aluminum Carabiners	1	15 lbs.



## Specifications and Standards

Component	Type	Total Capacity	Standards
Tool Tape	All	up to 5 lbs.	ANSI/ISEA 121-2018
Tool Attachments	Tape-on, Choke-on	up to 2 lbs. up to 5 lbs.	
	Loop-end	up to 35 lbs.	
Wrist	Anchor	up to 5 lbs.	

Component	Type	Total Capacity	Standards
Tool Tethers	Hard Hat	2 lbs.	ANSI/ISEA 121-2018
	Speed-clip	up to 5 lbs.	
	Choke-on	up to 15 lbs.	
	Dual Carabiner	up to 15 lbs.	

Component	Type
Webbing	Polyester
Carabiners	Steel and Aluminum

**Warnings:** The maximum permissible free fall in a tool tethering system is 8 ft. Never tether any tool or equipment to yourself weighing more than 5 lbs. Max.



# DROPPED OBJECT PREVENTION

The FallTech® Speed-clip system provides quick tool changes when working at heights while protecting those below you from the hazard of dropped objects. It features multiple compatible components, including tool attachments, wrist attachment anchors, and tool tethers for creating custom solutions for tools weighing up to 5 lbs.

## Speed-clip Attachments

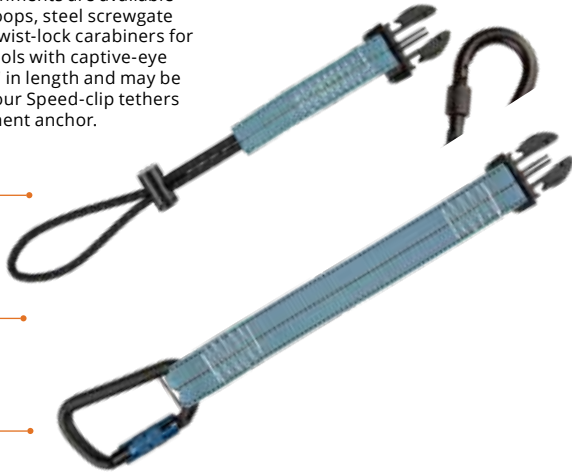
### Choke-on / Carabiner

Speed-clip attachments are available with choke-on loops, steel screwgate and aluminum twist-lock carabiners for connection to tools with captive-eye holes. All are 11" in length and may be combined with our Speed-clip tethers or wrist attachment anchor.

5027F

5105A5

5107A5



Item #	Speed-Clip Attachments	Pack Qty.	Max Tool Wt.
5027F	Choke-on Loop, 1" x 11"	3	5 lbs.
5027F15	Choke-on Loop, 1" x 11"	15	5 lbs.
5105A5	Steel Carabiner, 1" x 11"	5	5 lbs.
5107A5	Aluminum Carabiner, 1" x 11"	5	5 lbs.

## Wrist Attachment Anchor

### Speed-clip / D-ring

For interchangeable solutions commonly needed in close proximity work, our Wrist Attachment Anchor features a speed-clip receiver and a steel D-ring to provide multi-function adjustable attachment for speed-clips, carabiners and choke-on loops. Flexible neoprene and elastic with UniFit sizing for tools weighing up to 5 lbs.

5331A1



Item #	Wrist Attachment Anchor	Pack Qty.	Max Tool Wt.
5331A1	Speed-clip and D-ring, UniFit	1	5 lbs.
5331A5	Speed-clip and D-ring, UniFit	5	5 lbs.

## Speed-clip Tool Tethers

### Choke-on / Carabiner

Our Speed-clip Tool Tethers are designed for versatility as both stand-alone direct-connect tethers and for compatibility within our Speed-clip system in creating solutions to meet your specific needs. Available with elastic choke-on loops and options with steel screwgate and aluminum twist-lock carabiners for tools weighing up to 5 lbs.

5027E

5032A



Item #	Choke-on Loop Attachments	Pack Qty.	Max Tool Wt.
5027E	Choke-on loop, Steel Carabiner	1	5 lbs.
5032A	Choke-on loop, Aluminum Carabiner	1	5 lbs.

# DROPPED OBJECT PREVENTION

FT for Tools™ enables you to prevent dropped object related injuries. It is a complete system that offers multiple component options to create a dropped object prevention solution to fit your tools and your work applications while enabling you to work efficiently and safely.

## Anchor Attachments

Waist Belt Cinch Anchor Attachment fits most full body harness belts and webbing. Provides an easy-to-install anchor attachment for tool tethers where it is most convenient. D-ring connection point compatible with many different types of tool tethers.



Item #	Anchor Attachment	Pack Qty.	Max Tool Wt.
5424A10	Waist Belt Cinch Anchor Attachment	1	5 lbs.

## Tool Tethers

### Retractables

Compact design with high strength Dyneema rope reduces clutter or snags and increases productivity. Features dual aluminum self-closing, self-locking carabiners for maximum tool security.



Item #	Retractable Tool Tether	Pack Qty.	Max Wt.
5430A1	Retractable Tool Tether, Dyneema Rope with Dual Aluminum Carabiners, 48"	1	2 lbs.

Discover the full selection of all  
our fall protection products at  
[www.falltech.com](http://www.falltech.com)



**Tel / 323.752.0066**

**Fax / 323.752.5613**

**©2021 Alexander Andrew, Inc  
1306 S. Alameda St. Compton,  
CA. 90221-4803**

Tools shown not included.

Product description and specifications  
herein may change without notice.

U.S. and International Patents Pending.

Part #480-00047



@falltechsafety



@falltech



@falltechsafety



@falltech

# MARKET COMPARISON

FallTech®				
Item #	Weight Cap	Length	Description	List Price
5043A1	5 lbs.	36"	Premium Tool Tether, with Dual Swivel Alum Carabiners, 1/pk	\$17.95
5044A1	15 lbs.	36"	Premium Tool Tether, with Dual Swivel Alum Carabiners, 1/pk	\$19.75
5065A1	5 lbs.	36"	Premium Tool Tether, Choke-on Web-loop with Swivel Alum Carabiner, 1/pk	\$12.75
5061A1	15 lbs.	36"	Premium Tool Tether, Choke-on Cinch-loop with Swivel Alum Carabiner, 1/pk	\$14.50
5066A1	15 lbs.	36"	Premium Tool Tether, Choke-on Web-loop with Swivel Alum Carabiner, 1/pk	\$12.80
5340A	40 lbs.	78"	Tool Tether, Non-stretch, Swivel/Non-swivel Alum Carabiners, 1/pk	\$28.50
5340B	40 lbs.	78"	Tool Tether, Non-stretch, Choke-loop with Swivel Alum Carabiner, 1/pk	\$47.50
5335A5	2 lbs.	18"	Hard Hat Tether, ANSI Stretch-coil with Web, Cinch-loop/Web and Adjuster 5/pk	\$21.90
5335A25	2 lbs.	18"	Hard Hat Tether, ANSI Stretch-coil with Web, Cinch-loop/Web and Adjuster 25/pk	\$108.75
5212A1	2 lbs.	10"	Premium Tool Tether, Stretch-coil with Dual Swivel Alum Carabiners, 1/pk	\$17.10
5212A5	2 lbs.	10"	Premium Tool Tether, Stretch-coil with Dual Swivel Alum Carabiners, 5/pk	\$85.25
5215A1	5 lbs.	10"	Premium Tool Tether, 5 lbs, Stretch-coil with Dual Swivel Alum Carabiners, 1/pk	\$18.70
5215A5	5 lbs.	10"	Premium Tool Tether, Stretch-coil with Dual Swivel Alum Carabiners, 5/pk	\$93.00
5314A10	3 lbs.	6.25"	Tool Attachment, 2" Swage-lock Wire Loop, 10/pk	\$23.40
5314A25	3 lbs.	6.25"	Tool Attachment, 2" Swage-lock Wire Loop, 25/pk	\$57.50
5317A10	2 lbs.	5.5"	Tool Attachment, 5½" Choke-on Wire Loop, 10/pk	\$18.50
5317A25	2 lbs.	5.5"	Tool Attachment, 5½" Choke-on Wire Loop, 25/pk	\$46.00

Ergodyne			
Item #	Dimensions	Comments	List Price
N/A	N/A	Ergodyne does not have a 5lb, but does have a 10lb 3110F item. Ours has a twist gate, theirs screw gate. Ours has swivel carabiners, theirs none.	N/A
3118F	35-42in (89-107cm)	Squids® 3118F(x) Tool Lanyard Dual Locking Carabiner - 15lbs	\$28.45
N/A	N/A	Ergodyne has 10lb 3100F item, but not a 5lb. Ours has a twist gate, theirs screw gate. Ours has swivel carabiners, theirs none.	N/A
3101	35-42in (89-107cm)	Squids® 3101 Stainless Single Carabiner - 15lbs	\$19.45
3108F	28-35in (71-89cm)	Squids® 3108F(x) Tool Lanyard Single Locking Carabiner - 15lbs	\$18.25
3129	48in (122cm)	Squids® 3129 Tool Lanyard Double-Locking Single Carabiner with Swivel - 40lbs	\$41.65
3139	48in (122cm)	Squids® 3139 Tool Lanyard Double-Locking Dual Carabiner with Swivel - 40lbs	\$70.05
3157	20in (51cm)	Squids® 3157 Coil Tool Lanyard with Buckle - 2lbs / 0.9kg	\$6.25
3130S	6.5-50in (16.5-127cm)	Squids® 3130S Coiled Cable Lanyard - 2lbs Ergodyne 24 case qty	\$23.95
3130M	7-51in (18-129cm)	Squids® 3130M Coiled Cable Lanyard - 5lb	\$26.25
3705	3.5in (9.0cm)	Squids® 3705 Wire Tool Attachment - Screw Gate Tool Tail™ - 3lbs (6-Pack)	\$19.95
3704	3.5in (9.0cm)	Squids® 3704 Wire Tool Attachment - Loop Tool Tail™ - 2lbs (6-Pack)	\$15.95



# MARKET COMPARISON (CONT.)

FallTech® Cold Shrink			
Item #	Weight Cap	Description	List Price
5410A5	5 lbs.	Tool Attachment, Cold Shrink, Small, 5/pk	\$52.00
5411A5	10 lbs.	Tool Attachment, Cold Shrink, Medium, 5/pk	\$62.00
5412A5	15 lbs.	Tool Attachment, Cold Shrink, Large, 5/pk	\$90.50
FallTech® Shackles			
5420A2	15 lbs.	Tool Attachment, Shackle, 0.4" x 0.75", 2/pk	\$5.85
5421A2	15 lbs.	Tool Attachment, Shackle, 0.5" x 1.0", 2/pk	\$6.65
5422A2	15 lbs.	Tool Attachment, Shackle, 0.65" x 1.25", 2/pk	\$8.05
5423A2	15 lbs.	Tool Attachment, Shackle, 0.8" x 1.5", 2/pk	\$12.95
FallTech® Adhesive Tool Attachment			
5402A10	2 lbs.	Tool Attachment, Adhesive Tool Attachment, 10/pk	\$16.00
FallTech® Battery Boot			
5401A1	6 lbs.	Tool Attachment, Battery Boot 1/pk	\$15.75
FallTech® Tape Measure Holder			
5400A1	2 lbs.	Tool Attachment, Tape Measure Holder 1/pk	\$17.50
FallTech® Tool Attachment			
5318A10	15 lbs.	Tool Attachment, Choke-on Cinch-loop with D-ring 10/pk	\$45.00

Cold Shrink				
Item #	Weight Rating	Mfr.	Description	List Price 2020
19723	5lb - 10.55lb	Ergodyne	3" Cold Shrink Tool Trap	\$10.55
19724	10lb - 12.55lb	Ergodyne	4" Cold Shrink Tool Trap	\$12.55
19726	15lb - 18.25lb	Ergodyne	6" Cold Shrink Tool Trap	\$18.25
Shackles				
19792	15 lb	Ergodyne	.75" Small Shackle Connector, 2/pk	\$5.95
19793	15 lb	Ergodyne	1" Medium Shackle Connector, 2/pk	\$6.75
19794	15 lb	Ergodyne	1.25" Large Shackle Connector, 2/pk	\$8.15
19795	15 lb	Ergodyne	1.5" X Large Shackle Connector, 2/pk	\$13.05
SHKL0605LKC	5 lb	PSG/Tyflot	Anti Vibration Tool Tether Shackle 0.64" x 0.5"	\$7.61
SHKL1075LKC	10 lb	PSG/Tyflot	Anti Vibration Tool Tether Shackle 1.0" x 0.75"	\$8.56
SHKL1212LKC	15 lb	PSG/Tyflot	Anti Vibration Tool Tether Shackle 1.15" x 1.15"	\$9.82
SHKL1916LKC	30 lb	PSG/Tyflot	Anti Vibration Tool Tether Shackle 1.9" x 1.6"	\$15.21
Adhesive Tool Attachment				
TLADH	1.5 lb	PSG/Tyflot	Adhesive Tether Loop, 25/pk (adjusted to 10 pack)	\$15.40
1500010	2 lb	3M	Micro D-Ring, 10/pk	\$19.00
Battery Boot				
19782	6 lb	Ergodyne	Small Power Tool Trap Drill Boot	\$17.55
19784	10 lb	Ergodyne	Large Power Tool Trap Drill Boot	\$19.95
DRLBOOTSM	7 lb	PSG/Tyflot	Drill Boot with Tether Loop - Small	\$21.20
DRLBOOTLG-R	7 lb	PSG/Tyflot	Drill Boot with Tether Loop - Large	\$22.30
1500090	10 lb.	3M	3M/DBI-SALA Battery Holster/ Sleeve, 1/pk	\$32.00
Tape Measure Holder				
19770	2 lb	Ergodyne	Large Tape Measure Sleeve	\$20.55
TAPESLV	2 lb	PSG/Tyflot	Tape Measure Sleeve	\$16.49
1500099	2 lb	3M	3M/DBI-SALA Medium Tape Measure Sleeve, 1/pk	\$18.00

# PRICING

FallTech®				
Item #	Weight Cap	Length	Description	List Price
5043A1	5 lbs.	36"	Premium Tool Tether, 5 lbs, with Dual Swivel Alum Carabiners, 1/pk	\$17.95
5044A1	15 lbs.	36"	Premium Tool Tether, 15 lbs, with Dual Swivel Alum Carabiners, 1/pk	\$19.75
5065A1	5 lbs.	36"	Premium Tool Tether, 5 lbs, Choke-on Web-loop with Swivel Alum Carabiner, 1/pk	\$12.75
5061A1	15 lbs.	36"	Premium Tool Tether, 15 lbs, Choke-on Cinch-loop with Swivel Alum Carabiner, 1/pk	\$14.50
5066A1	15 lbs.	36"	Premium Tool Tether, 15 lbs, Choke-on Web-loop with Swivel Alum Carabiner, 1/pk	\$12.80
5340A	40 lbs.	78"	Tool Tether, 40 lbs, Non-stretch, Swivel/ Non-swivel Alum Carabiners, 78", 1/pk	\$28.50
5340B	40 lbs.	78"	Tool Tether, 40 lbs, Non-stretch, Choke-loop with Swivel Alum Carabiner, 78", 1/pk	\$47.50
5335A5	2 lbs.	18"	Hard Hat Tether, 2 lbs, ANSI Stretch-coil with Web, Cinch-loop/Web and Adjuster 18" 5/pk	\$21.90
5335A25	2 lbs.	18"	Hard Hat Tether, 2 lbs, ANSI Stretch-coil with Web, Cinch-loop/Web and Adjuster 18" 25/pk	\$108.75
5212A1	2 lbs.	10"	Premium Tool Tether, 2 lbs, Stretch-coil with Dual Swivel Alum Carabiners, 1/pk	\$17.10
5212A5	2 lbs.	10"	Premium Tool Tether, 2 lbs, Stretch-coil with Dual Swivel Alum Carabiners, 5/pk	\$85.25
5215A1	5 lbs.	10"	Premium Tool Tether, 5 lbs, Stretch-coil with Dual Swivel Alum Carabiners, 1/pk	\$18.70
5215A5	5 lbs.	10"	Premium Tool Tether, 5 lbs, Stretch-coil with Dual Swivel Alum Carabiners, 5/pk	\$93.00
5314A10	3 lbs.	6.25"	Tool Attachment, 3 lbs, 2" Swage-lock Wire Loop, 10/pk	\$23.40
5314A25	3 lbs.	6.25"	Tool Attachment, 3 lbs, 2" Swage-lock Wire Loop, 25/pk	\$57.50
5317A10	2 lbs.	5.5"	Tool Attachment, 2 lbs, 5½" Choke-on Wire Loop, 10/pk	\$18.50
5317A25	2 lbs.	5.5"	Tool Attachment, 2 lbs, 5½" Choke-on Wire Loop, 25/pk	\$46.00
5400A1	2 lbs.	N/A	Tool Attachment, Tape Measure Holder 1/pk	\$17.50
5401A1	6 lbs.	N/A	Tool Attachment, Battery Boot 1/pk	\$15.75
5402A10	2 lbs.	N/A	Tool Attachment, Adhesive Tool Attachment, 10/pk	\$16.00
5410A5	5 lbs.	1.75"	Tool Attachment, Cold Shrink, Small, 5/pk	\$52.00
5411A5	10 lbs.	2.25"	Tool Attachment, Cold Shrink, Medium, 5/pk	\$62.00
5412A5	15 lbs.	3.0"	Tool Attachment, Cold Shrink, Large, 5/pk	\$90.50
5420A2	15 lbs.	N/A	Tool Attachment, Shackle, 0.4" x 0.75", 2/pk	\$5.85
5421A2	15 lbs.	N/A	Tool Attachment, Shackle, 0.5" x 1.0", 2/pk	\$6.65
5422A2	15 lbs.	N/A	Tool Attachment, Shackle, 0.65" x 1.25", 2/pk	\$8.05
5423A2	15 lbs.	N/A	Tool Attachment, Shackle, 0.8" x 1.5", 2/pk	\$12.95
5318A10	15 lbs.	11"	Tool Attachment, Choke-on Cinch-loop with D-ring 10/pk	\$45.00
5424A10	5 lbs.	N/A	Tool Attachment, Waist Belt Cinch Anchor with D-ring, 10/pk	\$65.00
5430A1	2 lbs.	N/A	Retractable Tool Tether, Dyneema Rope with Dual Aluminum Carabiners, 48", 1/pk	\$27.50