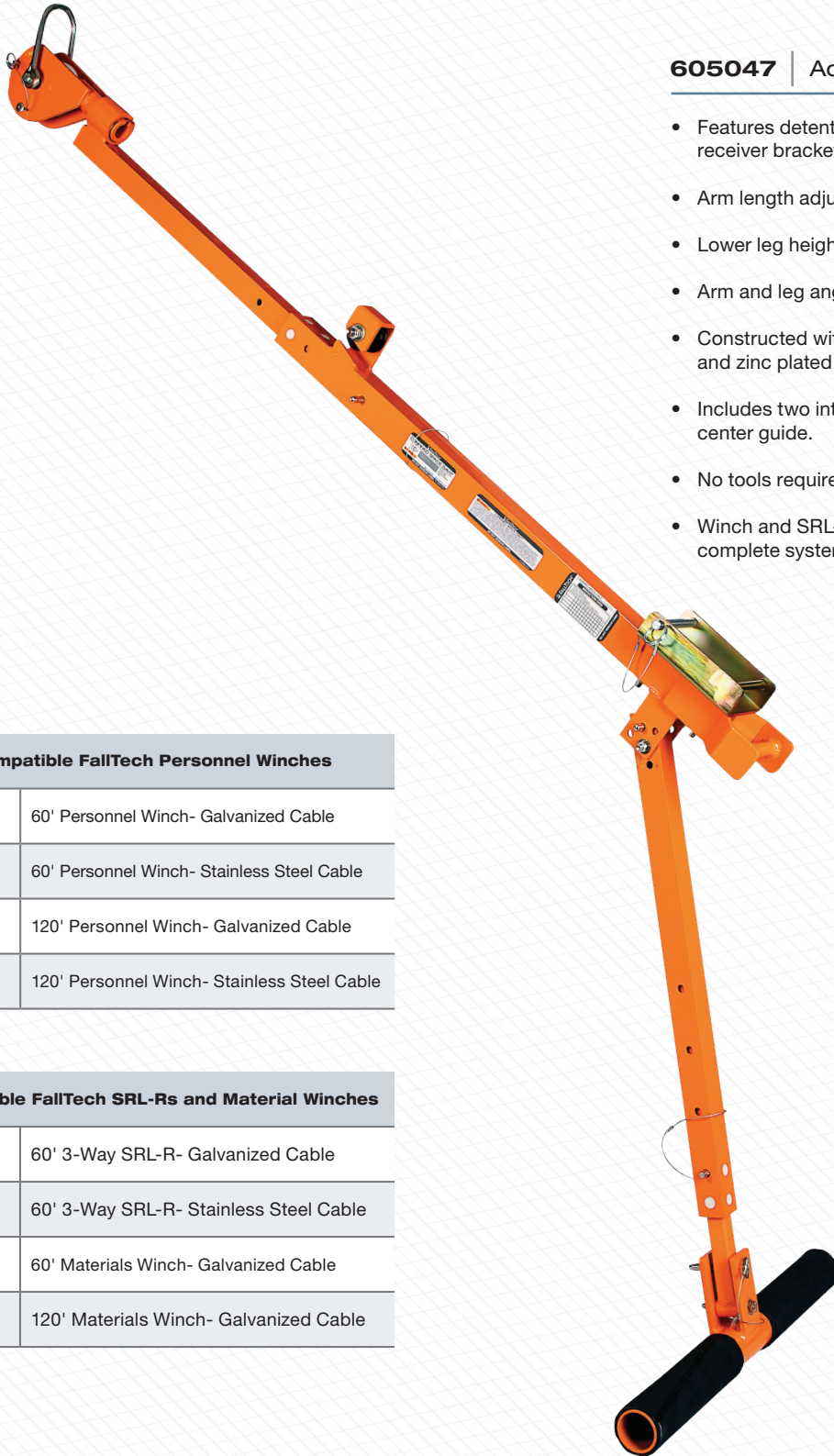




CONFINED SPACE DAVIT SOLUTIONS

ADJUSTABLE POLE HOIST

The FallTech® Pole Hoist is designed to work as part of a system to raise or lower personnel in confined space entry, retrieval and fall arrest applications. Additionally, the FallTech® Pole Hoist can be utilized for raising and lowering materials with a separate materials rated Winch. The Pole Hoist is operated with a suitable anchor point above or beside confined space access points such as manholes, sewer openings, and tank hatches in both horizontal and vertical entry and egress applications.



605047 | Adjustable Pole Hoist

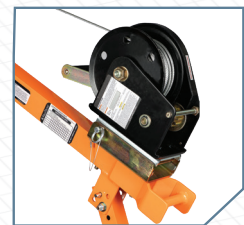
- Features detent pin adjustability and integral device receiver bracket for Winch or SRL-R.
- Arm length adjusts from 4½' to 6½' in 6" increments.
- Lower leg height adjusts from 2½' to 4' in 3" increments.
- Arm and leg angles adjust at 45° and 90° preset positions.
- Constructed with durable 6061 powder coated Aluminum and zinc plated steel.
- Includes two integral pulleys in the head assembly and the center guide.
- No tools required for set-up.
- Winch and SRL-R devices sold separately to create a complete system.

Compatible FallTech Personnel Winches

7297	60' Personnel Winch- Galvanized Cable
7297S	60' Personnel Winch- Stainless Steel Cable
7298	120' Personnel Winch- Galvanized Cable
7298S	120' Personnel Winch- Stainless Steel Cable

Compatible FallTech SRL-Rs and Material Winches

7281DG	60' 3-Way SRL-R- Galvanized Cable
7281DS	60' 3-Way SRL-R- Stainless Steel Cable
7293M	60' Materials Winch- Galvanized Cable
7295M	120' Materials Winch- Galvanized Cable



7297 60' Personnel Winch



7281DG 60' 3-way SRL-R

CONFINED SPACE DAVIT SOLUTIONS

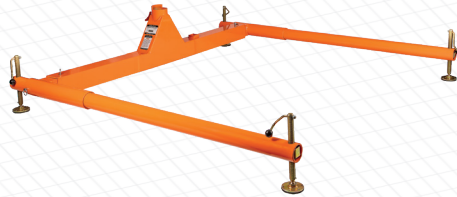
Our extensive line of Confined Space Davit solutions is enhanced to meet even more of your site specific needs including three 24" to 44" system components, two additional davit bases for manhole and barrel mount applications, multiple Vehicle Hitch Mount Base accessories and two device adapter brackets for competitor's winch and SRL-R devices.

Offset Davit Arm



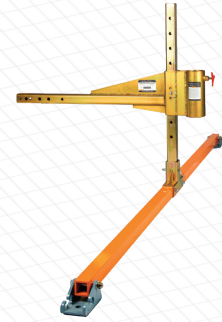
6500244 Offset Davit Arm includes receiver bracket for devices and features telescoping reach from 24" up to 44"

3-pc Adjustable Davit Base



6500844 Base width adjusts from 73" to 100" for use with 24" to 44" Offset Davit Arm

Vehicle Hitch Mount Davit Base



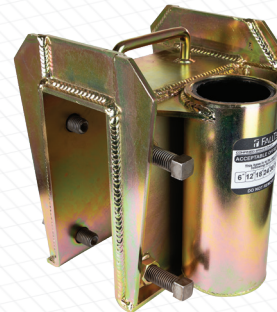
6501644 Hitch Mount Base for use with 24" to 44" Offset Davit Arm and mast extensions

Manhole Collar Davit Base



650124MH Manhole Collar features lightweight powder coated aluminum construction and integral handles; fits manholes from 22" to 24" in diameter.

Barrel Mount Davit Base



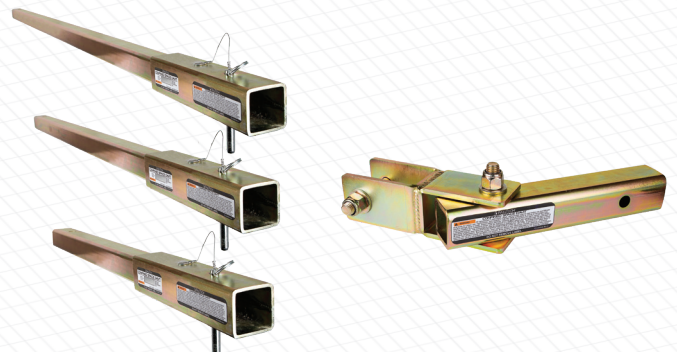
65012F Barrel Mount base features plated steel construction for structures up to 3½" thick

Device Adapter Brackets



65105D and **65106M** Brackets adapt DBI and Miller winches and SRL-R devices to FallTech Davits

Vehicle Hitch Mount Extenders



651102, **651104** and **651106** 2', 4' and 6' extenders and **651101U** U-joint adapter for use with Vehicle Hitch Mount bases 6501528 and 6501644.

PERFORMANCE AND MATERIAL SPECIFICATIONS

Materials		
651102	Hitch Extenders	Plated Alloy Steel
651104		
651106		
651101U	U-Joint Assembly	
65105D	Adapter Brackets	
65106M		
65012F	Barrel Mount Base	
650124MH	Manhole Collar Base	Powder Coated 6061 Aluminum
605047	Pole Hoist	Powder Coated 6061 Aluminum and Zinc Plated Steel
6500244	Davit Arm	
6500844	3pc Portable Base	
6501644	Vehicle Hitch Base	

Relevant Standards		
651102	Hitch Extenders	OSHA 1926.502
651104		
651106		
651101U	U-Joint Assembly	
65012F	Barrel Mount Base	
650124MH	Manhole Collar Base	
605047	Pole Hoist	OSHA 1926.502 when used with Davit Bases, Davit Arms and Mast Extensions
6500244	Davit Arm	
6500844	3pc Portable Base	
6501644	Vehicle Hitch Base	

Performance Specifications	
650124MH Manhole Collar Base	
Moment Rated	4,000 ft-lbs. Minimum
Rescue Capacity	Two Users up to 620 lbs. Max. combined weight
Entry/Egress Capacity	One User up to 310 lbs. Max weight
65012F Barrel Mount Base	
Moment Rated	6,750 ft-lbs Minimum
Mast Rotation	180° Maximum
Rescue Capacity	Two Users up to 620 lbs. Max. combined weight
Entry/Egress Capacity	One User up to 310 lbs. Max weight
605047 Pole Hoist	
Entry/Egress Capacity	One User up to 310 lbs. max for Entry/Egress Operations

System Performance Specifications	
6500244 Davit Arm 6500844 3pc Davit Base	
Minimum Strength Ratings by Use**	
Moment Rated	6,750 ft-lbs. Minimum
Rescue Configuration	5,000 lbs. Minimum
Entry/Egress Operation	1,800 lbs. Minimum
Number of Users and Weight Capacities	
Rescue Configuration	2 Users Max. 310 lbs. each
Entry/Egress Operation	1 User Max 310 lbs.

System Performance Specifications	
6501644 Vehicle Hitch Mount Base	
Minimum Strength Ratings by Use**	
Moment Rated	5,750 ft-lbs. Minimum
Rescue Configuration	5,000 lbs. Minimum
Entry/Egress Operation	1,800 lbs. Minimum
Number of Users and Weight Capacities	
Rescue Configuration	2 Users Max. 310 lbs. each
Entry/Egress Operation	1 User Max 310 lbs.

** Specifications shown above are for complete 5pc System; see Owner's Manual for complete table of Minimum Load Ratings