

⚠ PLEASE READ - IMPORTANT SAFETY INFORMATION

Please read and understand the manufacturer's instructions for each component or part of the complete system. Manufacturer's instructions must be followed for proper use, care, and maintenance of this product. These instructions must be retained and be kept available for the worker's reference at all times. Alterations or misuse of this product, or failure to follow instructions, may result in serious injury or death.

⚠ WARNINGS AND LIMITATIONS

- Never use the FallTech For Tools® components for personal fall arrest, restraint, or work positioning.
- Inspect the FallTech For Tools® components before each use in accordance with the requirements in Section 6 below.
- Never modify or alter the FallTech For Tools® components. This includes extending the length or tying knots in the tool tethers.
- Never tether any tool or equipment to yourself that weighs more than 5 lbs (2.3 kg).
- Never use this products to tether a knife, sharp blade, or other sharp tool.
- Immediately inspect the FallTech For Tools® components for damage if the tool has experienced a drop.
- Do not use this product on tools or equipment that exceed the rated capacity of the lowest rated component in the FallTech For Tools® system.
- Do not use this product if it will interfere with any personal fall protection equipment or the operation of the connected tools or equipment.
- Avoid using around moving machinery, thermal, electrical, and/or chemical hazards as contact may cause serious injury or death.
- Ensure there is adequate tool drop clearance. The tool fall/swing path must not endanger you or any other workers.
- All procedures shown in these instructions are for FallTech For Tools® products only.
- Report all incidents of dropped tools to your supervisor or safety coordinator.
- Do not use this product in temperatures below -31 degrees F (-35 degrees C) or above 113 degrees F (45 degrees C)

1.0 Description - The FallTech For Tools® Tool Tethers are used to connect to the tool or tool attachment to FallTech® Wrist Attachments and Tool Anchors.

2.0 Application - The FallTech For Tools® Tool Tethers are designed to be used as a component in a dropped object prevention program. The tool tethering system is an assembly of components and subsystems to arrest a tool from an accidental drop. The system typically consists of tool attachment, a tool tether, and a tool anchor. See product labels for maximum load capacity and maximum tether length.

3.0 System Requirements - The FallTech For Tools® Tool Tethers is designed for use by a single tool with a combined weight no greater than 15 lbs (6.8 kg), based on the rating of the attachment. **DO NOT** exceed the capacity of the lowest rated component in the system.

3.1 Compatibility of Components: Equipment is designed for use with approved components and subsystems only. Substitutions or replacements made with non-approved components or subsystems may jeopardize compatibility of equipment and may affect the safety and reliability of the complete system.

3.2 Making Connections: Only use locking connectors with this equipment. Only use connectors that are suitable to each application. Ensure all connections are compatible in size, shape, and strength. Do not use equipment that is not compatible. Visually ensure all connectors are fully closed and locked.

4.0 Installation

4.1 Pre-Use Inspection: Inspect the tool tethers thoroughly for missing or damaged parts before attaching it to the tool. Inspect the webbing, looped ends, and stitching for cuts, fraying, and signs of damage to the materials from excessive wear or abrasion. Inspect the carabiners and speed clips for excessive wear, cracks, or deformities. If any of these conditions exist, remove from service.

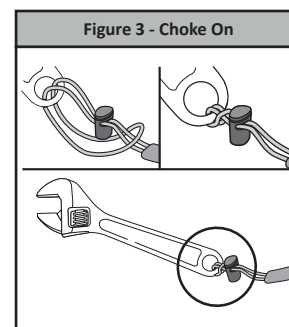
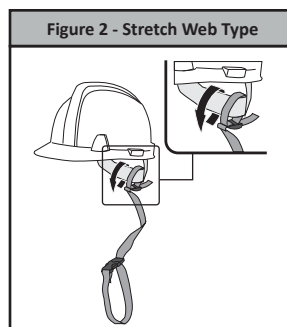
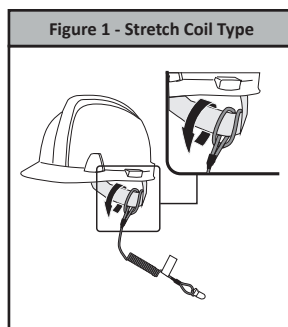
4.2 Installation Procedure: Ensure the tool attachment is clean and free of oil, grease, or debris, which could prevent adequate attachment onto the tool or tool attachment. The Tool Tether should be placed away from the functional parts of the tool and the connection point should face away from the center of gravity if connect directly to the tool. See the figures below for the installation steps by type of attachment.

4.2.1 Hard Hat Tether Installation Procedure (Stretch Coil Type): Locate a secure location on the inner suspension, an open hole, or slot on the shell to install the FallTech® Hard Hat Tether. Feed the looped end into the hole or slot and pass the anchorage end connector through the loop to choke down onto the hard hat, see Figure 1. Open the metal clip and securely attach it to a suitable anchor point such as a full body harness.

4.2.2 Hard Hat Tether Installation Procedure (Stretch Web Type): Locate a secure location on the inner suspension, an open hole, or slot on the shell to install the FallTech® Hard Hat Tether. Open the plastic cam buckle to release the webbing from the buckle. Slide the end through and around the hole or slot and feed it back into the cam buckle, see Figure 2. Adjust to the desired length and close the cam buckle. Pull on the web to ensure the connection is secure, detach the plastic speed clip and route the anchorage end to a secure anchor point such as a full body harness.

4.2.3 Choke-On Installation Procedure: Pass the nylon loop through an established hole on the tool, pass the anchorage end connector through the nylon loop and pull the tool attachment through to choke down onto the tool, see Figure 3. Connect to a suitable anchor point. **DO NOT** attach tools over 5 lbs (2.3 kg) to Wrist Anchor or to your full body harness.

4.2.4 Carabiner Installation Procedure: Unscrew the screw gate and attach to an existing hole, turn the screw gate to lock it in the closed position. If using a twist lock carabiner, ensure it is fully locked closed. **DO NOT** attach tools over 5 lbs (2.3 kg) to a Wrist Anchor or to your full body harness.



5.0 Maintenance, Service, and Storage

5.1 Maintenance: No scheduled maintenance is required, other than the replacement of items that fail inspection.

5.2 Service: There are no specific service requirements for this system component.

5.3 Storage: Store in a clean, dry, chemical-free environment out of direct sunlight. Avoid prolonged exposure to extreme heat conditions.

6.0 Inspection - Inspect the FallTech For Tools® Tool Attachments per the inspection procedure in Section 4.1. If any abnormalities are found, remove from service.

FallTech For Tools® Tool Tether Specifications				
Model #	Description	Capacity and Standards	Tool Attachment Image	
5329A5 5329A25	Stretch-Coil Hard Hat Tether, Choke-on Cinch-loop and Snap-clip 5/pk Stretch-Coil Hard Hat Tether, Choke-on Cinch-loop and Snap-clip 25/pk	Up to 2 lbs (0.9 kg)		
5330A5 5330A25	Stretch-web Hard Hat Tether w/Adjuster and Snap-buckle 5/pk Stretch-web Hard Hat Tether w/Adjuster and Snap-buckle 25/pk			
5335A5 5335A25	Hard Hat Tether, 2 lbs, ANSI Stretch-coil with Web, Cinch-loop/Web and Adjuster 18" 5/pk Hard Hat Tether, 2 lbs, ANSI Stretch-coil with Web, Cinch-loop/Web and Adjuster 18" 25/pk	Up to 2 lbs (2.3 kg)		
5212A1 5212A5	Premium Tool Tether, 2 lbs, Stretch-coil with Dual Swivel Alum Carabiners, 1/pk Premium Tool Tether, 2 lbs, Stretch-coil with Dual Swivel Alum Carabiners, 5/pk	ANSI/ISEA 121-2018		
5027E	3' to 4' Speed-clip Stretch-web Tether 5 lbs, elastic Choke-on Cinch-loop with Steel Screwgate Carabiner 1/pk	Up to 5 lbs (2.3 kg) ANSI/ISEA 121-2018		
5032A	3' to 4' Speed-clip Stretch-web Tether 5 lbs, elastic Choke-on Cinch-loop with Alum Twist-lock Carabiner 1/pk			
5215A1 5215A5	Premium Tool Tether, 5 lbs, Stretch-coil with Dual Swivel Alum Carabiners, 1/pk Premium Tool Tether, 5 lbs, Stretch-coil with Dual Swivel Alum Carabiners, 5/pk			
5043A1	Premium Tool Tether, 5 lbs, with Dual Swivel Alum Carabiners, 36", 1/pk			
5065A1	Premium Tool Tether, 5 lbs, Choke-on Web-loop with Swivel Alum Carabiner, 1/pk			
5041A1	Premium Tool Tether, 5 lbs, Choke-on Cinch-loop with Speed-clip and Swivel Alum Carabiner, 48", 1/pk			
5424A10	Tool Attachment, 5 lbs, Waist Belt Cinch Anchor with D-Ring, 10/pk			
5029B 5029B10	3' to 4' Stretch-web Tether 15 lbs, elastic Choke-on Cinch-loop with Steel Screwgate Carabiner 1/pk 3' to 4' Stretch-web Tether 15 lbs, elastic Choke-on Cinch-loop with Steel Screwgate Carabiner 10/pk		Up to 15 lbs (6.8 kg) ANSI/ISEA 121-2018	
5030A 5030A10	3' to 4' Stretch-web Tether 15 lbs, elastic Choke-on Cinch-loop with Alum Twist-lock Carabiner 1/pk 3' to 4' Stretch-web Tether 15 lbs, elastic Choke-on Cinch-loop with Alum Twist-lock Carabiner 10/pk			
5029C	3' to 4' Stretch-web Tether 15 lbs with Dual Steel Screwgate Carabiners 1/pk			
5031A	3' to 4' Stretch-web Tether 15 lbs with Dual Alum Twist-lock Carabiners 1/pk			
5044A1	Premium Tool Tether, 15 lbs, with Dual Swivel Alum Carabiners, 36", 1/pk			
5061A1	Premium Tool Tether, 15 lbs, Choke-on Cinch-loop with Swivel Alum Carabiner, 36", 1/pk			
5066A1	Premium Tool Tether, 15 lbs, Choke-on Web-loop with Swivel Alum Carabiner, 1/pk			
5340A	Tool Tether, 40 lbs, Non-stretch, Swivel Aluminum Carabiners, 78", 1/pk	Up to 40 lbs (18.1 kg)		
5340B	Tool Tether, 40 lbs, Non-stretch, Choke-loop with Swivel Alum Carabiner, 78", 1/pk	ANSI/ISEA 121-2018		