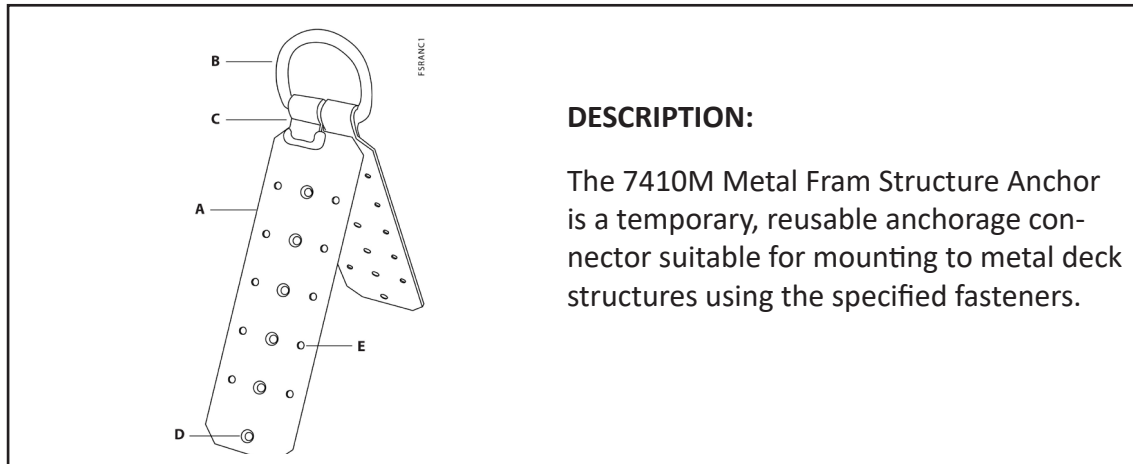


# Metal Frame Structure Anchor

7410M

## User Instruction Manual Supplement



### DESCRIPTION:

The 7410M Metal Fram Structure Anchor is a temporary, reusable anchorage connector suitable for mounting to metal deck structures using the specified fasteners.

### GENERAL SPECIFICATIONS

Compliant Standards:	ANSI Z359.1-2007 OSHA 1926.502 & 1910.140
Max. Number of Users:	One Worker (One PFAS)
Max. User Capacity, ANSI:	310 lbs (141 kg)
Max. User Capacity, OSHA:	425 lbs (193 kg)
Minimum Tensile Strength:	5,000 lbs (22,241 N)
Fasteners:	12pcs 1/4"-14 x 2/1/2" Self-Drilling Hex Head Screws

### MATERIALS AND CONSTRUCTION

General Construction:	Zinc-Plated Alloy Steel
Base-Plate Material:	Alloy Steel
D-Ring Material:	Forged Alloy Steel
Finish:	Zinc Plated
Plating Specification:	ASTM B633-13, Type III, SC2, Yellow
Fastener Material:	Zinc Plated Alloy Steel

### IMPORTANT INFORMATION

This user instruction manual serves as a supplement to MANC04. The 7410M anchor is considered a Type A anchorage connector as detailed in MANC04. This manual provides the necessary installation requirements and warnings specific to the use on metal deck. Users should refer to MANC04 for all general fall protection information, warnings, system requirements, maintenance, storage, and inspection guidelines.

### RE-USE INSTRUCTIONS

Carefully remove the screws. Exercise caution, do not bend or deform the base plates. Do not pull on the D-ring to detach anchor. The user must make any necessary roof or structural repairs that result from installation, use, and/or de-installation of the anchor.

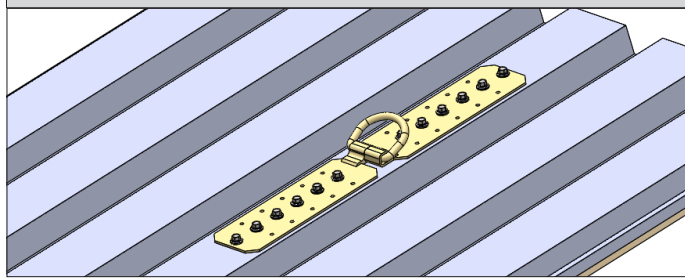
DO NOT reuse fasteners. If the anchor is removed and reinstalled, provide new fasteners at each installation.

### WARNINGS AND INSTALLATION REQUIREMENTS:

1. This anchorage connector must be installed or have its installation supervised by a Competent Person.
2. If this equipment is subjected to fall arrest forces or fails inspection, it must be removed from service immediately.
3. Minimum Steel Decking/Metal Roof Requirements:
  - a. Minimum 22 gauge metal sheeting/decking over minimum 14 gauge Z-Purlin
  - b. Maximum allowable span between purlins is 6 feet.
4. Do not install anchor through sheeting alone or through purlin alone. Both substrates must be present.
5. Anchors must be installed at least six feet from any exposed edge and a maximum of eight feet apart.
6. Do not alter or intentionally misuse this product.

This manual is intended to meet the Manufacturer's Instructions as required by the American National Standards Institute (ANSI) Z359 and should be used as part of an employee training program as required by the Occupational Safety and Health Administration (OSHA).

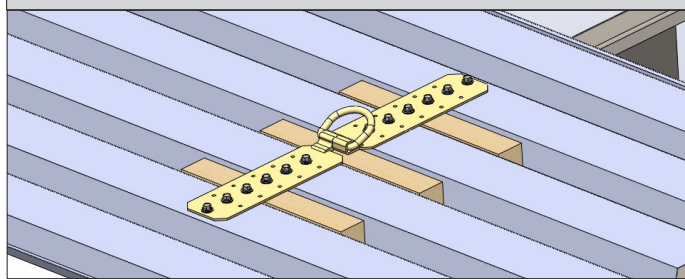
**Figure 1: 7410M Anchor - Parallel Installation**



**PARALLEL INSTALLATION INSTRUCTIONS:**

1. When installing the 7410M in the parallel configuration, the anchor must be mounted to the crown of the decking (highest surface). DO NOT install the anchor within the trough of the decking. Ensure that the minimum substrate requirements are met.
2. Place the anchor in the center of the crown as shown in Figure 1.
3. Drive (12) 1/4"-14 x 2-1/2" zinc plated self-drilling hex head screws into the center row of holes on each plate as shown in Figure 1.
4. Do not install anchor through sheeting alone or through purlin alone. Both substrates must be present.
5. When installed in this configuration, the anchor can sustain loads in all directions. Make sure you meet the minimum setback distances from the edge.

**Figure 2: 7410M Anchor - Perpendicular Installation**



**PERPENDICULAR INSTALLATION INSTRUCTIONS:**

1. When installing the 7410M in the perpendicular configuration, the anchor must be mounted to the crown of the decking (highest surface). Ensure that the minimum substrate requirements are met. Wood support members must also be added; placed in the troughs of the decking as shown in Figure 2.
2. Place the anchor perpendicularly across the crown and wood support members as shown in Figure 2. The anchor should be placed such that all of the screws will drive into the metal deck flange or the wood support members.
3. Drive (12) 1/4"-14 x 2-1/2" zinc plated self-drilling hex head screws into the center row of holes on each plate as shown in Figure 2.
4. Do not install anchor through sheeting alone or through purlin alone. Both substrates must be present.
5. When installed in this configuration, the anchor can sustain loads in all directions. Make sure you meet the minimum setback distances from the edge.

**LABEL IMAGE:**

<p><b>FALLTECH</b> 800-719-4619 www.falltech.com <b>Reusable Metal Roof Anchor</b></p> <p>- Model: 7410M - Material: Alloy Steel - Min. Breaking Strength: 5000 lbs. - Capacity: 310 lbs. ANSI/OSHA 425 lbs., OSHA only</p>	<p>- Meets OSHA 1926.502 ANSI Z359.1-2007 - Use only as part of a design compatible Personal Fall Arrest System (PPAS). Do not use for other purposes. - Do not remove labels. - For temporary use only. - Year of Manufacture: 2018</p>	<p><b>WHEN INSTALLING PARALLEL TO CROWN</b></p> <p>- Anchor must be mounted on crown of decking. DO NOT install anchor anywhere within the trough of the decking. Ensure minimum substrate requirements are met. - Drive (12) 1/4"-14 x 2-1/2" self-drilling screws into center row of holes. - DO NOT install anchor through sheeting alone or through purlin alone. - Both substrates must be present. - Anchor can withstand loads in all directions. Ensure minimum setback distance from the edge of 6 feet.</p>	<p><b>WHEN INSTALLING PERPENDICULAR TO CROWN</b></p> <p>- Anchor must be mounted across the top of the crown of the decking. Ensure minimum substrate requirements are met. Wooden support members must be added under the anchor within the troughs of the decking. - Arrange anchor such that all screws will drive into the metal crown or the wooden support members. - Drive (12) 1/4"-14 x 2-1/2" self-drilling screws into center row of holes. - DO NOT install anchor through sheeting alone or through purlin alone. Both substrates must be present. - Anchor can withstand loads in all directions. Ensure minimum setback distance from the edge of 6 feet.</p>
---	--	---	--

412-02665 Rev A

Read, understand and follow all instructions prior to using this product. Make only compatible connections. Do not alter or misuse. Avoid contact with machinery, electrical hazards or sharp edges. Do not attempt to repair. If inspection reveals Roof Anchor to be damaged or if Roof Anchor has been subjected to fall arrest forces (or equivalent), immediately remove from service. This anchorage connector is intended to be installed on a metal framed structure capable of supporting 5000lbs. Only one personal protective system may be

installed per anchor. Free fall must not exceed 6 feet. Make certain adequate clear fall distance exists between working surface and next lower level. Be aware of swing fall hazards. Be aware of corrosive and chemical hazards and their effects. Refer to instruction manual for proper method of connecting to this anchor, and connector compatibility. Refer to instruction manual for inspection requirements.

**Minimum Structure Requirements: 22 gauge metal sheeting/ decking over a minimum 14 gauge Z-Purlin**

412-02664 rev A