



ANCHORAGES



BODYWEAR



FALLTECH[®]
Fall Protection. Precision Engineered.



CONNECTORS



**SELF-RETRACTING
LIFELINES**

ANCHORAGES

Selecting an appropriate anchorage connector for your fall arrest system is a critical element in protecting yourself and others from the flood of fall hazards that proliferate work sites everywhere. Designed to fit a broad scope of general and specific user applications, our offering of anchorage connectors meet those requirements head-on. Solutions for temporary and permanent installation to steel structures, I-beams, concrete, roofing and specialty constructs not only provide worker confidence and reliability, they deliver that critical connection point for your fall arrest system.

Steel

7393W | Rotating Weld-on



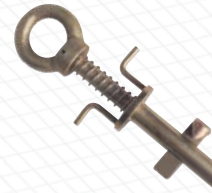
7414 | Bolt-on Plate



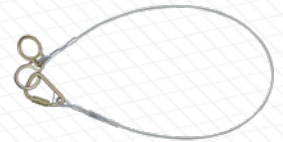
7435 | Bolt-on D-ring



7408 | Toggle-through



84202D | Carabiner Cable



I-Beam

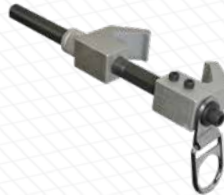
7530 | Trailing/Mobile



7538 | Trailing/Mobile



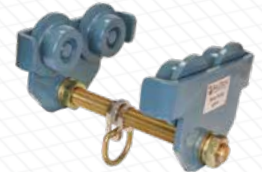
7535 | Fixed/Vertical



7712 | Aluminum Trolley



7711 | Steel Trolley



Concrete

7440 | Expansion Wedge



7442 | Hollow-core



7448 | Pour-in-place



7451A | Rotating D-ring



7451C | Rotating D-ring



Roofing

7410 | Hinged Reusable



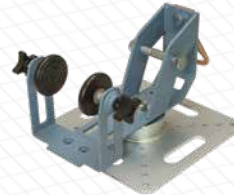
7493A | Chain Reusable



7431 | Permanent



7395A | Rotating SRL



7395C | Elevated SRL



Multi-Purpose and Specialty

7336 | Pass-through



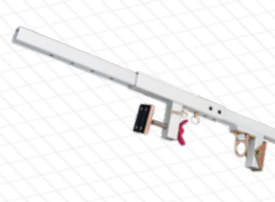
72493FT | Arc Flash



7460A | Parapet



7465A | Window/Door



74942 | Drop-through



BODY WEAR

When it comes to your fall protection equipment, there's nothing more personal, essential or important than your full body harness. While FallTech harnesses are built to meet or exceed ANSI standards and OSHA regulations, we've also designed comfort, support and accessibility into our body wear with continued freedom of movement, sustained safety and improved productivity for workers at height.

Advanced ComforTech® Gel

7081B | Construction



7080B3D | Non-Belted



7082BFD | Climbing



FlowTech® LTE

7087B | Non-Belted



7089B | Construction



Journeyman Flex Aluminum

7035B | Construction



7021B | Non-Belted



7021BFD | Climbing



Journeyman Flex Steel

7021QC | Non-Belted



7035QC | Construction



Tradesman Plus

7008B | Non-Belted



7010B | Non-Belted



7078B | Construction



Contractor Plus

7016B | Non-Belted



7073B | Construction



Arc Flash

7047QC | Non-Belted



WeldTech™

7039 | Non-Belted



High-Viz Vest

7018L | Non-Belted



Tower Climber®

7084 | Tower Belted



Roughneck®

8001B | Derrick Bosun



CONNECTORS

FallTech's extensive selection of connectors for fall arrest, work positioning and restraint applications is built on years of dependable construction, performance and quality through rigorous testing and by directly addressing the needs of the end-user. From ElasTech® to Ironman®, for rebar and rope positioning plus lifelines, extenders and carabiners, when you need to be connected, you have the right equipment for the job.

Energy Absorbing Lanyards

8260732D | ViewPack® Tie-back



8240Y3A | ElasTech® Aluminum



8247ELY3D | Ironman® 12' Free Fall



82593 | Low-profile Internal



Specialty Applications

8354LEY3 | Leading Edge



8242L | Choke-loop Arc Flash



8242Y3 | WeldTech™



8246 | Heavyweight®



Positioning and Restraint

8250 | Chain Rebar



8165B | 6½' Rope Positioning



8209 | Adjustable Restraint



8458 | 16" Assembly



Vertical Ascent

8150 | Premium Back-splice



8149T | Construction Tape-end



8388 | Anti-panic Fall Arrester



7479 | Trailing Rope Adjuster



Extenders and Carabiners

8366 | Web D-ring Extender



8366C | Cable D-ring Extender



8450 | Steel Carabiner



8447A | Aluminum Carabiner



SELF-RETRACTING LIFELINES

FallTech® offers a full range of self-retracting lifeline solutions to meet nearly every user requirement and for a wide variety of applications. Whether the user is working in construction, utilities maintenance or general industry and the installation is overhead, at foot-level or personally attached to the harness, DuraTech® and Contractor SRLs provide durable performance and reliability that's supported with 3rd-party testing documentation to meet all industry standards.

Personal

72706TB3 | 6' Mini



74709TB8 | 9' Tie-back



82709TB5 | 9' MAX



82706SB1 | 6' DuraTech®



72906TB1 | 6' Arc Flash



Overhead

7232C | 30' Cable



727630 | 30' Cable



7276WR | 20' Web



82710SC1 | 10' Web



83709SB7 | 9' Cable



Leading Edge

7232CLE | 30' Cable



727630LE | 30' Cable



83909TP3 | 9' Personal Cable



83909SP1 | 9' Personal Cable



ADDITIONAL PRODUCTS

In addition to anchorages, body wear, connectors and devices, FallTech also provides fall protection solutions for davit and tripod Confined Space Entry, synthetic rope and steel cable Horizontal Lifeline systems, self and assisted Rescue and Descent applications plus our expanded selection of Dropped Tool Prevention solutions.

Confined Space

6050428WR | Davit System



7509 | Tripod Kit



7281 | 3-way/SRL-R



7297 | Personnel Winch



7293M | Materials Winch

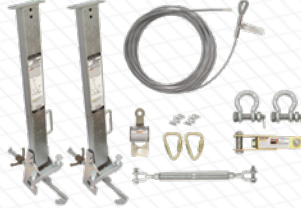


Horizontal Systems

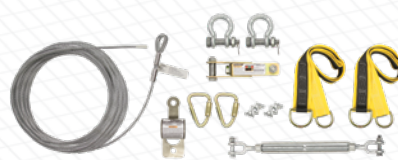
77602K | 60' Rope HLL



6036018 | 60' Cable HLL



60260A | 60' Cable HLL



603018K | 42" I-Beam Stanchion



Rescue and Descent

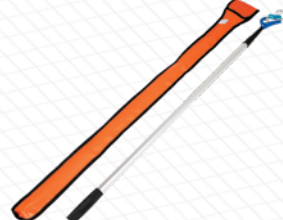
6814150K | Rescue/Descent Kit



6813150K | Crane Rescue Kit



68030T | Rescue Pole



5040 | Suspension Trauma

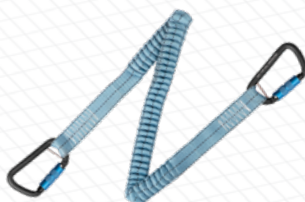


FallTech® for Tools

5029B | Tool Tether



5031A | Tool Tether



5032A | Speed-clip Tether



5331A1 | Wrist Anchor



©2019 FallTech
1306 S. Alameda St. Compton, CA. 90221-4803

Tel / 323.752.0066 Fax / 323.752.5613

Tools shown not included.

Product description and specifications herein may change without notice.

U.S. and International Patents Pending.

www.falltech.com Part #480-00022



@falltechsafety



@falltech



@falltechsafety



@falltech