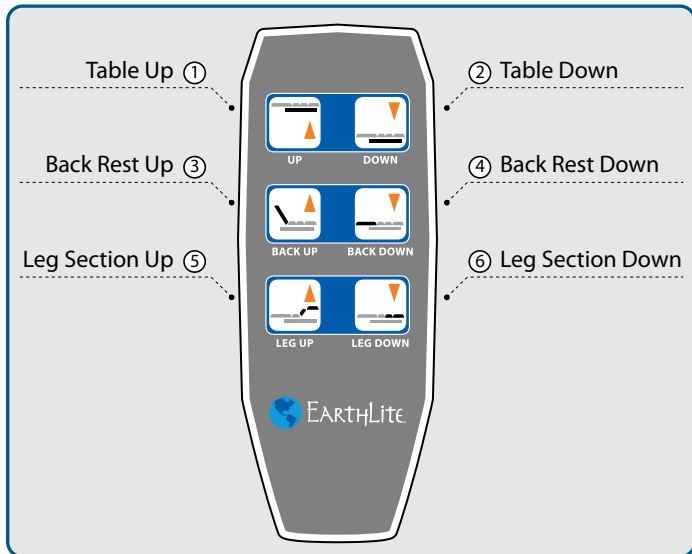


The following instructions will guide you through each function of your hand control.

1. Raises the bed section of the table up
2. Lowers the bed section of the table down
3. Raises the back rest of the table up
4. Lowers the back rest of the table down
5. Raises the leg section of the table up
6. Lowers the leg section of the table down

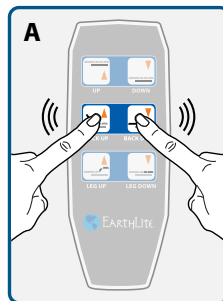


## RESET MODE:

### Step 1

Press and hold the two middle buttons of the second row simultaneously until you hear a series of beeps (**Diagram A**).

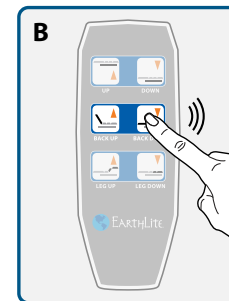
Keep buttons pressed until beeping stops.



### Step 2

Lower back rest down to a flat position (**Diagram B**).

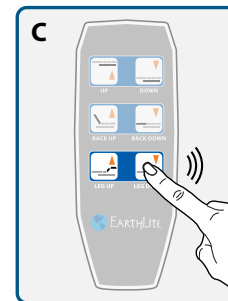
Keep button pressed until beeping stops.



### Step 3

Lower leg section down to a flat position (**Diagram C**).

Keep button pressed until beeping stops.



After the back rest section and leg section are reset and fully retracted to their flat positions (**diagram below**), the table will start working normally.

