

WIRE ROPE CLIPS



Applications

Wire rope clips are used on wire rope eye-loop connections or complete loops, end-to-end connections where socketing or splicing is not feasible or when a temporary joint is required.

Range

Green Pin® offers a wide range of wire rope clips in specifically standardized models such as EN 13411-5 and DIN wire rope clips. Van Beest also offers a wide range of other wire rope clips to complement the Green Pin® assortment.

Design

Green Pin® wire rope clips are drop forged and have a bridge with grooves to tighten the wire rope properly in the clip; the DIN wire rope clips have a malleable base, without grooves.

Wire rope clips are generally marked with:

- manufacturer's symbol - e.g. GP
- wire rope diameter in mm or inches - e.g. 13 or 1/2"
- traceability code - e.g. A1

Finish

The finish can be electro-galvanized or hot dipped galvanized.

Certification

Specific details of certificate availability can be found on each product page. Please verify your certification requirements with Green Pin® at the time of order.

Instructions for use

Wire rope clips should be inspected before use to ensure that:

- all markings are legible;
- a wire rope clip with the correct dimensions has been selected;
- the nuts or any other locking system cannot vibrate out of position;
- the wire rope clip is free from nicks, gouges and cracks;
- never modify, repair or reshape a wire rope clip by machining, welding, heating or bending as this may affect their performance.

The wire rope clip should be fitted to the wire rope as shown in below figures. The bridge of the wire rope clip should always be placed on the load bearing part of the rope. The U-bolt of the clip should be placed on the rope tail, also known as the dead end of the rope. Turn back enough wire rope length so that the required minimum number of clips can be installed according to the instructions below.

The first clip must be placed one bridge width from the turned-back rope tail or dead end of the rope, according to figure 1. Tighten the nuts to the specified torque.

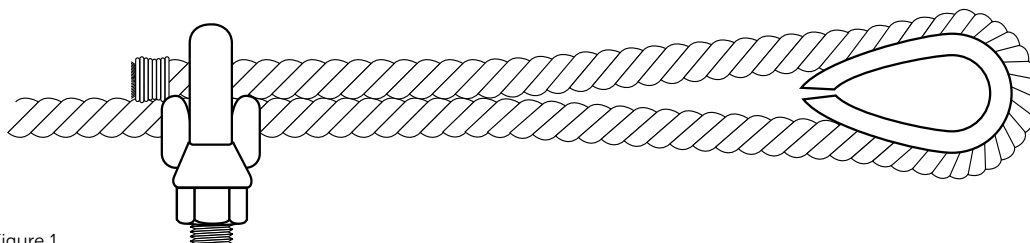


Figure 1

The second clip must be placed immediately against the thimble. Take care that the correct tightening of the clip does not damage the outer wires of the wire rope (figure 2). Tighten the nuts firmly but not yet to the specified torque.

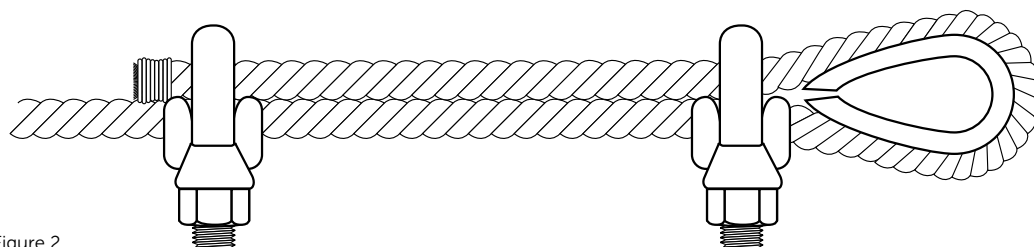


Figure 2

The following clips should be placed on the wire rope between the first and second clip in such a way that they are separated by at least $1\frac{1}{2}$ times the clip-width with a maximum of 3 times the clip-width, according to figure 3.

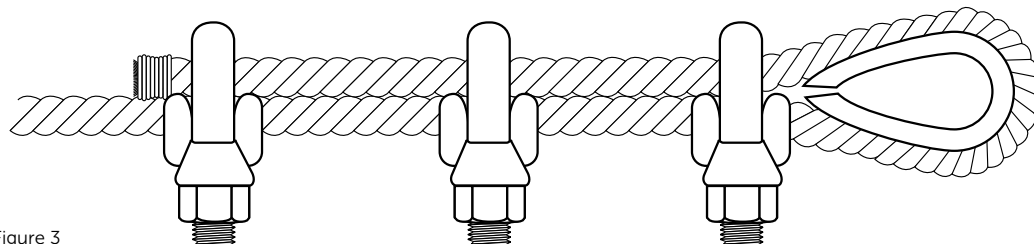


Figure 3

Apply light tension on the rope and tighten all nuts evenly, alternating until reaching the specified torque. After assembly and before the rope is taken into service, the nuts must be tightened further to the prescribed torque. After the load has been applied to the assembly for the first time, the torque value must be checked and corrected if necessary. Re-tightening of the nuts must be done at 10.000 cycles (heavy usage), 20.000 cycles (moderate usage) or 50.000 cycles (light usage). If cycles are unknown, a competent person could fix a time period, e.g. every 3 months, 6 months, annually.

The torque values and the minimum number of clips to be applied for a particular rope size are given in the following tables.

diameter wire rope inch	diameter wire rope mm	min. no of clips required	length of rope to turn back mm	torque value Nm	torque value Ft.Lbs
$\frac{1}{8}$	3 - 4	2	85	6.1	4.5
$\frac{3}{16}$	5	2	95	10.2	7.5
$\frac{1}{4}$	6 - 7	2	120	20.3	15
$\frac{5}{16}$	8	3	133	40.7	30
$\frac{3}{8}$	9 - 10	3	165	61	45
$\frac{7}{16}$	11	3	178	88	65
$\frac{1}{2}$	12 - 13	3	292	88	65
$\frac{9}{16}$	14 - 15	3	305	129	95
$\frac{5}{8}$	16	3	305	129	95
$\frac{3}{4}$	18 - 20	4	460	176	130
$\frac{7}{8}$	22	4	480	305	225
1	24 - 26	5	660	305	225
$1\frac{1}{8}$	28 - 30	6	860	305	225
$1\frac{1}{4}$	32 - 34	7	1120	488	360
$1\frac{3}{8}$	36	7	1120	488	360
$1\frac{1}{2}$	38 - 40	8	1370	488	360
$1\frac{5}{8}$	41 - 42	8	1470	583	430
$1\frac{3}{4}$	44 - 46	8	1550	800	590
2	48 - 52	8	1800	1017	750
$2\frac{1}{4}$	56 - 58	8	1850	1017	750
$2\frac{1}{2}$	62 - 65	9	2130	1017	750
$2\frac{3}{4}$	68 - 72	10	2540	1017	750
3	75 - 78	10	2690	1627	1200

Table 1, Green Pin® wire rope clips generally to EN 13411-5 Type B, required number and torque value

diameter wire rope	min. no of clips required	torque value	torque value
mm		Nm	Ft.Lbs
5	3	2	1.5
6.5	3	3.5	2.6
8	4	6	4.4
10	4	9	6.6
12	4	20	14.8
13	4	33	24.3
14	4	33	24.3
16	4	49	36
19	5	68	50
22	5	107	79
26	5	147	108
30	6	212	156
34	6	296	218
40	6	363	268

Table 2, Wire rope clips generally to EN 13411-5 Type A, required number and torque value

The efficiency of a wire rope termination made with wire rope clips depends on the correct placement of the clips on the rope and on correct fitting and tightening of the clips. With inadequately tightened nuts or with an insufficient number of wire rope clips the rope end may slide through the clips during use.

The fitting of the clips on the ropes may be affected by various circumstances, such as:

- the nut may be tight on the thread, yet not tight against the bridge;
- contamination of the thread by dirt, oil or corrosion products, which may prevent correct tightening of the nut.

Forged wire rope clips provide greater bearing surface and more consistent strength than malleable cast iron clips.

Suitable applications of wire rope clips to EN 13411-5 standards include suspending static loads and single use lifting operations which have been assessed by a competent person taking into account appropriate safety factors.

Wire rope clips should not be used in following applications:

- hoist ropes in mines;
- rope drives for cranes in steel works and rolling mills;
- permanent fastening of ropes in other rope drives;
- rope terminations for load suspension devices in the operation of lifting appliances, except in the case of lifting tackles where these are produced for a special application and used only once.

Wire rope clips must be regularly inspected in accordance with the safety standards given in the country of use. This is required because the products in use may be affected by wear, misuse, overloading etc. which may lead to deformation and alteration of the material structure. Inspection should take place at least every six months and more frequently when the products are used in severe operating conditions.



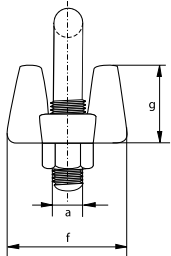
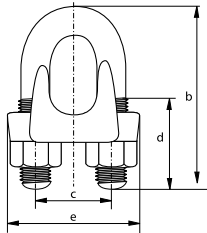
Green Pin® Wire Rope Clip

Wire rope clip generally to EN 13411-5 Type B

- **Material:** bridge: drop forged high tensile steel SAE 1045
U-bolt: SAE 1015
- **Standard:** EN 13411-5 Type B
formerly U.S. Federal Specification FF-C-450D
- **Finish:** hot dipped galvanized
U-bolt and/or nuts for diameter bow 5, 6, 8 and 10 are electro galvanized
- **Certification:** 2.1



G-6240



diameter wire rope	diameter a	length bow b	width inside c	length thread d	length base e	thickness base f	height base g	weight per 100 pcs kg
3 - 4	5	24	12	11	24	21	10	2
5	6	31	15	13	29	24	13	4
6 - 7	8	34	19	13	37	30	18	8
8	10	45	22	19	43	33	19	14
9 - 10	11	49	26	19	49	42	25	19
11	12	60	30	25	58	46	26	31
12 - 13	13	61	30	25	58	48	31	34
14 - 15	14	72	33	32	63	52	31	36
16	14	74	33	32	64	54	36	45
18 - 20	16	86	38	37	72	57	38	68
22	19	98	45	41	80	62	40	108
24 - 26	19	108	48	46	88	67	47	113
28 - 30	19	117	51	51	91	73	48	140
32 - 34	22	130	59	54	105	79	56	207
36	22	140	60	59	108	79	58	234
38 - 40	22	147	66	60	112	85	64	266
41 - 42	25	161	70	67	121	92	67	329
44 - 46	29	174	78	70	134	97	76	441
48 - 52	32	195	86	78	150	113	85	603
56 - 58	32	213	98	81	162	116	100	707
62 - 65	32	227	105	87	168	119	113	806
68 - 72	32	243	112	91	174	127	124	1000
75 - 78	38	271	121	98	194	135	136	1440

In inch

diameter wire rope	diameter a	length bow b	width inside c	length thread d	length base e	thickness base f	height base g	weight per 100 pcs lbs
1/8	3/16	15/16	15/32	7/16	15/16	13/16	13/32	4.4
3/16	1/4	1 7/32	19/32	1/2	1 5/32	15/16	1/2	8.8
1/4	5/16	1 11/32	3/4	1/2	1 15/32	1 3/16	23/32	17.6
5/16	13/32	1 25/32	7/8	3/4	1 11/16	1 5/16	3/4	28.7
3/8	7/16	1 15/16	1 1/32	3/4	1 15/16	1 21/32	31/32	42
7/16	15/32	2 3/8	1 3/16	31/32	2 9/32	1 13/16	1 1/32	73
1/2	1/2	2 13/32	1 3/16	31/32	2 9/32	1 7/8	1 7/32	75
9/16	9/16	2 27/32	1 5/16	1 1/4	2 15/32	2 1/16	1 7/32	99
5/8	9/16	2 29/32	1 5/16	1 1/4	2 17/32	2 1/8	1 13/32	99
3/4	5/8	3 3/8	1 1/2	1 15/32	2 27/32	2 1/4	1 1/2	150
7/8	3/4	3 27/32	1 25/32	1 5/8	3 5/32	2 7/16	1 9/16	238
1	3/4	4 1/4	1 7/8	1 13/16	3 15/32	2 5/8	1 7/8	249
1 1/8	3/4	4 19/32	2	2	3 19/32	2 7/8	1 7/8	309
1 1/4	7/8	5 1/8	2 5/16	2 1/8	4 1/8	3 1/8	2 7/32	456
1 3/8	7/8	5 1/2	2 3/8	2 5/16	4 1/4	3 1/8	2 9/32	516
1 1/2	7/8	5 25/32	2 19/32	2 3/8	4 13/32	3 11/32	2 17/32	560
1 5/8	31/32	6 11/32	2 3/4	2 5/8	4 3/4	3 5/8	2 5/8	725
1 3/4	1 5/32	6 27/32	3 1/16	2 3/4	5 9/32	3 13/16	3	972
2	1 1/4	7 11/16	3 3/8	3 1/16	5 29/32	4 7/16	3 11/32	1329
2 1/4	1 1/4	8 3/8	3 27/32	3 3/16	6 3/8	4 9/16	3 15/16	1559
2 1/2	1 1/4	8 15/16	4 1/8	3 7/16	6 5/8	4 11/16	4 7/16	1777
2 3/4	1 1/4	9 9/16	4 13/32	3 19/32	6 27/32	5	4 7/16	2238
3	1 1/2	10 21/32	4 3/4	3 27/32	7 5/8	5 5/16	5 11/32	3245